

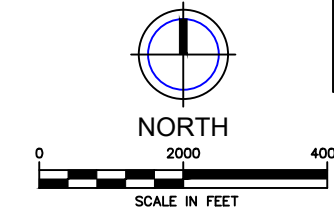
Allendale Charter Township Ottawa County, Michigan

OFFICIAL ZONING MAP

Latest Revision October, 2017

ZONING DISTRICT LEGEND

AG	AGRICULTURAL AND RURAL	PUD	PLANNED UNIT DEVELOPMENT
RE	RURAL ESTATE	O	OFFICE
R-1	LOW DENSITY ONE-FAMILY RESIDENTIAL	G-C	GENERAL COMMERCIAL
R-2	MEDIUM DENSITY ONE- AND TWO-FAMILY RESIDENTIAL	C-3	SERVICE COMMERCIAL
R-3	LOW DENSITY MULTIPLE FAMILY RESIDENTIAL	I	INDUSTRIAL
R-4	MEDIUM DENSITY MULTIPLE FAMILY RESIDENTIAL/OFFICE	S	SCHOOL
R-5	MOBILE HOME PARK		
[Dashed Box]	GROUP HOUSING OVERLAY ZONE (SEE SECTION 3.15)		



FLOOD PLAIN SHOWN IS APPROXIMATE BASED ON GIS DATA FROM OTTAWA COUNTY AND IS FOR REFERENCE ONLY

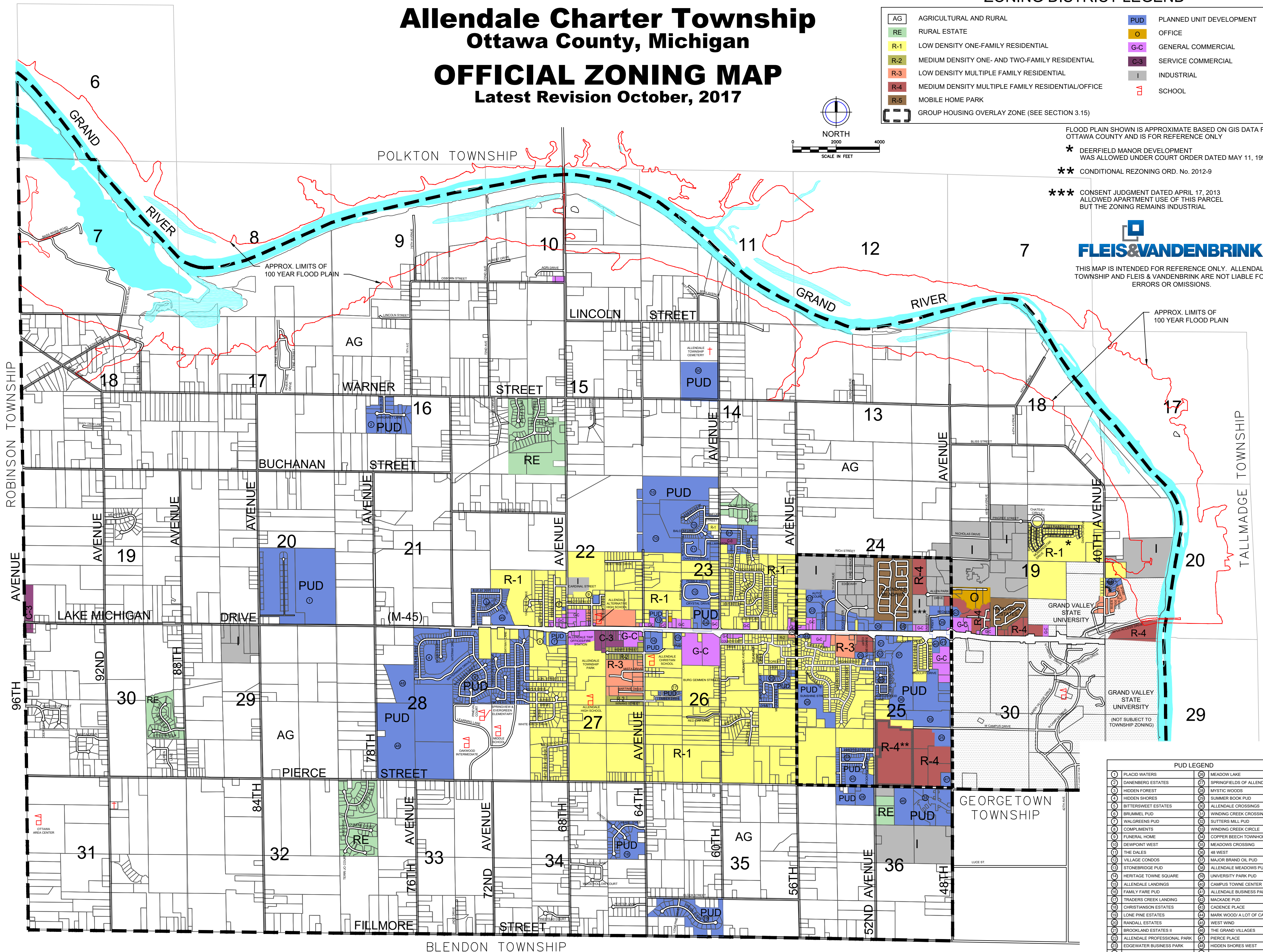
* DEERFIELD MANOR DEVELOPMENT WAS ALLOWED UNDER COURT ORDER DATED MAY 11, 1999

** CONDITIONAL REZONING ORD. No. 2012-9

*** CONSENT JUDGMENT DATED APRIL 17, 2013 ALLOWED APARTMENT USE OF THIS PARCEL BUT THE ZONING REMAINS INDUSTRIAL



THIS MAP IS INTENDED FOR REFERENCE ONLY. ALLENDALE TOWNSHIP AND FLEIS & VANDENBRINK ARE NOT LIABLE FOR ERRORS OR OMISSIONS.



PUD LEGEND

⊙	PLACID WATERS	⊙	MEADOW LAKE
⊙	DANENBERG ESTATES	⊙	SPRINGFIELDS OF ALLENDALE
⊙	HIDDEN FOREST	⊙	MYSTIC WOODS
⊙	HIDDEN SHORES	⊙	SUMMER BOOK PUD
⊙	BITTERSWEET ESTATES	⊙	ALLENDALE CROSSINGS
⊙	BRUMMEL PUD	⊙	WINDING CREEK CROSSINGS
⊙	WALGREENS PUD	⊙	SUTTERS MILL PUD
⊙	COMPLIMENTS	⊙	WINDING CREEK CIRCLE
⊙	FUNERAL HOME	⊙	CORPUS BEECH TOWNHOMES
⊙	DEWPOINT WEST	⊙	MEADOWS CROSSING
⊙	THE DALES	⊙	48 WEST
⊙	VILLAGE CONDOS	⊙	MAJOR BRAND OIL PUD
⊙	STONEBRIDGE PUD	⊙	ALLENDALE MEADOWS PUD
⊙	HERITAGE TOWNE SQUARE	⊙	UNIVERSITY PARK PUD
⊙	ALLENDALE LANDINGS	⊙	CAMPUS TOWNE CENTER PUD
⊙	FAMILY FARE PUD	⊙	ALLENDALE BUSINESS PARK
⊙	TRADERS CREEK LANDING	⊙	MACKADE PUD
⊙	CHRISTIANSON ESTATES	⊙	CADENCE PLACE
⊙	LONE PINE ESTATES	⊙	MARK WOOD A LOT OF CARS
⊙	RANDALL ESTATES	⊙	WEST WIND
⊙	BROOKLAND ESTATES II	⊙	THE GRAND VILLAGES
⊙	ALLENDALE PROFESSIONAL PARK	⊙	PIERCE PLACE
⊙	EDGEWATER BUSINESS PARK	⊙	HIDDEN SHORES WEST
⊙	WESTSHORE COMMUNICATIONS	⊙	HIDDEN FOREST ESTATES
⊙	CAMPUS WEST	⊙	KENNEDY LAKE