

Agenda for the
Allendale Charter Township Board Meeting
Monday, October 24, 2022, 6:00pm

Members Present:

Members Absent:

Guests Present:

Meeting called to order

- Invocation given by Adam Elenbaas
- Pledge of Allegiance
- Approve Agenda
- Consent Agenda
 - Approval of the October 10, 2022 Regular Board Meeting Minutes
 - Bills
 - Interim Bills
- For information
 - September Finance Report
 - Minutes of the October 3, 2022 Planning Commission Meeting
 - Minutes of the October 10, 2022 Election Commission Meeting
 - September Sheriff's Department Monthly Report
 - Administrative Assistant Job Update
- Public Hearings
- Public Comments
- Guest Speakers
 - 2023 Budget- Tim Van Bennekom, Finance Director
- Action Items
 - Set Budget Public Hearing Date
 - Springfield North Final Preliminary Plat Approval
- Discussion Items
 - Extension of DDA TIF
- Public Comments
- Board Comments
- Future Agenda Items
- Adjournment

Our Wi-Fi connection may be used to access the Board Information Packet:

- Account: ACT_Guest
- Password: ACTguest
- File location: www.allendale-twp.org → Agendas and Minutes → Agendas: Township Board

**PROPOSED
PROCEEDINGS OF THE ALLENDALE
TOWNSHIP BOARD OF TRUSTEES
OCTOBER SESSION 1st DAY**

The Allendale Township Board of Trustees met at the Allendale Township Auditorium, located at 6676 Lake Michigan Drive, on Monday, October 10, 2022, at 6:00 p.m. and was called to order at 6:00 p.m. by Mr. Elenbaas.

Present at Roll Call: Ms. Kraker; Ms. Hansen; Mr. Murillo; Mr. Zeinstra; Ms. Vander Veen; Mr. Vander Wall; and Mr. Elenbaas. (7)

Absent at Roll Call: None (0)

Staff and Guest Present: Sergeant Cal Keuning, Ottawa County Sheriff; Tim Van Bennekom, Finance Director; Shelly Kowalczyk, Safety Coordinator; Mary Cook, Library Director; Chief Mike Keefe, Fire Department; Lt. Kyle Garlanger, Fire Department; and Connor Galligan, Head Assessor.

Ms. Kraker pronounced the invocation.

Mr. Elenbaas led in the Pledge of Allegiance to the Flag of the United States of America.

BOT 22-174 Mr. Zeinstra moved to approve the agenda of today as presented. The motion passed.

BOT 22-175 Ms. Kraker moved to approve the following Consent Resolutions:

1. To approve the Minutes of the September 26, 2022, Board of Trustees meeting.
2. To approve the general claims in the amount of \$243, 579.13 and interim payments of \$807,253.63, as presented by the summary report for October 11, 2022.
3. To approve the purchase of “No Engine Braking” signs for locations outlined in the request letter submitted by Zach Fields, Operations Coordinator.

The motion passed.

Items Received for Information

1. September 19, 2022, Planning Commission Meeting was cancelled- no minutes to report.
2. Minutes of the May 17, 2022, Downtown Development Authority Meeting
3. Minutes of the September 20, 2022, Downtown Development Authority Meeting
4. September Fire Department Report

Public Hearings- None

Public Comments- None

BOT 22-176 Mr. Elenbaas moved to close public comment. The motion passed.

Guest Speakers

Tim Van Bennekom, Finance Director introduced presenters for proposed budgets/overview for various departments.

Jody Hansen, Clerk, presented the following proposed budgets:

1. Clerk
2. Elections
3. Community Promotions

Connor Galligan, Head Assessor, presented the following proposed budgets:

1. Board of Review
2. Assessing

Tim VanBennekom, Finance Director, presented the following proposed budgets/accounts:

1. Administration
2. Fire Station Appropriations

Chief Mike Keefe, Fire Department, presented the following proposed budgets:

1. Fire Department

Mary Cook, Library Director, presented the following proposed budgets:

2. Library

Lt. Kyle Garlanger, Fire Department, presented the following proposed budgets/accounts:

1. Rental Administration

Chad Doornbos, Public Utilities Supervisor, presented the following proposed budgets:

1. Water
2. Sewer

Tim VanBennekom, Finance Director, provided an overview of what to expect in the next couple of upcoming board meetings and budget finalization timelines.

Several board members had questions and comments.

Action Items

- BOT 22-177 Ms. Kraker moved to approve and authorize the Clerk and Supervisor to sign Ordinance 2022-08: Codification of General Law Ordinances; an ordinance adopting a codification and revision of the ordinances of the Charter Township of Allendale, County of Ottawa, State of Michigan; providing for the maintenance of said code; repealing and saving from repeal certain ordinances not included therein; establishing a penalty for altering or tampering with the code; and making certain changes in previously adopted ordinances. The motion passed.
- BOT 22-178 Mr. Zeinstra moved to approve and authorize the Supervisor to sign the July 4, 2023, contract as amended. The motion passed.

Discussion Items

Chief Mike Keefe, Fire Department, presented proposed Emergency Services Cost Recovery Ordinance and Resolution changes. Chief Keefe expressed concerns of increased response times for ambulances and the impact these increased wait times are having on fire personnel staffing coverage, costs, and patient impacts. The proposed changes would clarify some existing language and create a possible solution to help offset the ambulance wait times and the costs/impacts associated with them.

Several board members had questions and comments.

Public Comments -None

- BOT 22-179 Mr. Elenbaas moved to close public comment. The motion passed.

Board Comments- None

BOT 22-180 Mr. Vander Wall moved to adjourn the meeting at 8:03 p.m. The motion passed.

Jody L. Hansen, Clerk
Of the Township of Allendale

Adam Elenbaas, Supervisor
Of the Township of Allendale

GL Number	GL Desc	Vendor	Invoice Description	Amount	Check #
Fund 101 General Fund					
Dept 000.000 REVENUE					
101-000.000-123.000	Prepaid Expense	BS&A SOFTWARE	PAYROLL SYSTEM - ANNUAL SERVICE/SUPPO	597.00	
101-000.000-123.000	Prepaid Expense	CARDMEMBER SERVICE	CREDIT CARD CHARGES	229.00	
101-000.000-123.000	Prepaid Expense	GRAND VALLEY METRO COUNC	LGROW ANNUAL DUES	400.00	
101-000.000-123.000	Prepaid Expense	OTTAWA CTY FIRE CHIEFS A	2023 ANNUAL CHIEFS DUES	150.00	
101-000.000-123.000	Prepaid Expense	THE LIBRARY NETWORK	ANNUAL SOFTWARE LICENSE RENEWAL	39.20	
101-000.000-222.000	Due To County	OTTAWA COUNTY TREASURER	MOBILE HOMES TAX - SEPTEMBER	254.50	
101-000.000-225.000	Due To Schools	OTTAWA COUNTY TREASURER	MOBILE HOMES TAX - SEPTEMBER	1,018.00	
101-000.000-284.205	HIGHPOINT REAL ESTATE-METRO HEA	HIGHPOINT REAL ESTATE &	ESCROW ACCOUNT REFUND	114.15	
101-000.000-284.220	11185 84TH AVE SALES DISPLAY	GREGORY DEJONG	ESCROW ACCOUNT REFUND	564.00	
101-000.000-284.222	CENTENNIAL FARM-SITE CONDO	FRESH COAST PLANNING LLC	PLANNING SERVICES - SEPTEMBER	24.00	
101-000.000-284.224	STATION 45-2022 SLU	FRESH COAST PLANNING LLC	PLANNING SERVICES - SEPTEMBER	264.00	
101-000.000-284.228	ALDI	FRESH COAST PLANNING LLC	PLANNING SERVICES - SEPTEMBER	72.00	
101-000.000-284.231	GRIFFIOEN SLU-10259 52ND AVE	FRESH COAST PLANNING LLC	PLANNING SERVICES - SEPTEMBER	252.00	
101-000.000-284.231	GRIFFIOEN SLU-10259 52ND AVE	SCHOLTEN FANT	ATTORNEY SERVICES - SEPTEMBER	180.00	
101-000.000-284.232	TOMMY'S EXPRESS-QCW ENTERPRISES	FRESH COAST PLANNING LLC	PLANNING SERVICES - SEPTEMBER	156.00	
101-000.000-284.233	MARCUSSE OFFICE BLDG	FRESH COAST PLANNING LLC	PLANNING SERVICES - SEPTEMBER	576.00	
101-000.000-284.234	11126 52ND-EAGLE ROCK VENTURES	FRESH COAST PLANNING LLC	PLANNING SERVICES - SEPTEMBER	156.00	
101-000.000-284.235	PEARLINE ESTATES	FRESH COAST PLANNING LLC	PLANNING SERVICES - SEPTEMBER	120.00	
101-000.000-284.236	BIGGBY (5195 LMD)	FRESH COAST PLANNING LLC	PLANNING SERVICES - SEPTEMBER	480.00	
Total For Dept 000.000 REVENUE				5,645.85	
Dept 171.000 Supervisor					
101-171.000-721.000-SEMINA	PROFESSIONAL DEVELOPMENT	CARDMEMBER SERVICE	CREDIT CARD CHARGES	56.78	
101-171.000-860.000	MILEAGE	ADAM ELENBAAS	MILEAGE REIMBURSEMENT - 3RD QTR	166.94	
101-171.000-955.000	Miscellaneous	SPECTRUM HEALTH HOSPITAL	DRUG SCREENING - NEW EMPLOYEE	53.00	
Total For Dept 171.000 Supervisor				276.72	
Dept 191.000 FINANCE/ACCT					
101-191.000-721.000-SEMINA	PROFESSIONAL DEVELOPMENT	CARDMEMBER SERVICE	CREDIT CARD CHARGES	12.49	
101-191.000-721.000-SEMINA	PROFESSIONAL DEVELOPMENT	CARDMEMBER SERVICE	CREDIT CARD CHARGES	307.83	
Total For Dept 191.000 FINANCE/ACCT				320.32	
Dept 209.000 EMPLOYEE INSURANCES					
101-209.000-720.000-HEALTH	EMPLOYERS HEALTH INSURANCE	PRIORITY HEALTH	HEALTH INSURANCE - NOVEMBER	17,425.51	
Total For Dept 209.000 EMPLOYEE INSURANCES				17,425.51	
Dept 223.000 AUDIT					
101-223.000-805.000	Auditor Consultant	KIEKOVER SCHOLMA & SHUMA	AUDITOR CONSULTATION	785.00	
Total For Dept 223.000 AUDIT				785.00	
Dept 248.000 ADMINISTRATION					
101-248.000-721.000-SEMINA	PROFESSIONAL DEVELOPMENT	CARDMEMBER SERVICE	CREDIT CARD CHARGES	450.00	
101-248.000-732.000	SUPPLIES	CARDMEMBER SERVICE	CREDIT CARD CHARGES	112.24	
101-248.000-732.000	SUPPLIES	CARDMEMBER SERVICE	CREDIT CARD CHARGES	31.45	
101-248.000-732.000	SUPPLIES	SMART BUSINESS SOURCE LL	CALENDARS - OFFICE SUPPLIES	120.09	
101-248.000-732.000	SUPPLIES	STAPLES	OFFICE SUPPLIES	101.42	
101-248.000-802.000	Contracted Services	CARDMEMBER SERVICE	CREDIT CARD CHARGES	119.99	
101-248.000-802.000-ITMONT	Contracted Services	CARDMEMBER SERVICE	CREDIT CARD CHARGES	310.47	
101-248.000-802.000-ITMONT	Contracted Services	CARDMEMBER SERVICE	CREDIT CARD CHARGES	130.82	
101-248.000-802.000-ITMONT	Contracted Services	REHMANN TECHNOLOGY SOLUT	UPDATE 2008R2 DOMAIN FUNCTIONAL LEVEL	60.00	
101-248.000-802.000-ITMONT	Contracted Services	REHMANN TECHNOLOGY SOLUT	DYMO LABEL MAKER ISSUES - WEAVER	210.00	
101-248.000-802.000-ITMONT	Contracted Services	REHMANN TECHNOLOGY SOLUT	DISASTER RECOVERY - OCTOBER	477.00	
101-248.000-802.000-ITMONT	Contracted Services	REHMANN TECHNOLOGY SOLUT	I/T SERVICES - OCTOBER	2,341.80	

INVOICE GL DISTRIBUTION REPORT FOR ALLENDALE CHARTER TOWNSHIP
EXP CHECK RUN DATES 10/12/2022 - 10/25/2022
UNJOURNALIZED
OPEN

GL Number	GL Desc	Vendor	Invoice Description	Amount	Check #
Fund 101 General Fund					
Dept 248.000 ADMINISTRATION					
101-248.000-802.000-ITMONT	Contracted Services	REHMANN TECHNOLOGY SOLUT	ELECTION COMPUTERS/PRINTERS ISSUES	557.25	
101-248.000-900.000	PRINTING, PUBLISHING, & POSTAGE	ALLENDALE AREA CHAMBER O	OCTOBER ANNOUNCER AD	360.00	
101-248.000-900.000	PRINTING, PUBLISHING, & POSTAGE	KCI (KENT COMMUNICATIONS	MAIL PICKUP FEE - JULY; AUG; SEPT	135.00	
101-248.000-900.000	PRINTING, PUBLISHING, & POSTAGE	KCI (KENT COMMUNICATIONS	GENERAL POSTAGE	13.89	
101-248.000-955.000	Miscellaneous	VERIZON WIRELESS	CELL PHONE SERVICES - SEPTEMBER	5.85	
Total For Dept 248.000 ADMINISTRATION				5,537.27	
Dept 262.000 ELECTIONS					
101-262.000-732.000	SUPPLIES	AMAZON CAPITAL SERVICES	ELECTION PRECINCT BINDERS	16.42	
101-262.000-732.000	SUPPLIES	AMAZON CAPITAL SERVICES	AVCB SUPPLY BAGS	299.98	
101-262.000-732.000	SUPPLIES	STAPLES	ELECTION PRECINCT BINDERS	77.45	
101-262.000-732.000	SUPPLIES	STAPLES	ELECTION CO-CHAIR BINDERS	29.63	
101-262.000-732.000	SUPPLIES	STAPLES	BINDERS & INSPECTOR SNACKS	73.64	
101-262.000-802.000	Contracted Services	KCI (KENT COMMUNICATIONS	ELECTION MAIL SERVICES	370.58	
101-262.000-802.000	Contracted Services	KCI (KENT COMMUNICATIONS	ELECTION MAIL SERVICES	24.01	
101-262.000-955.000	Miscellaneous	CARDMEMBER SERVICE	CREDIT CARD CHARGES	10.00	
Total For Dept 262.000 ELECTIONS				901.71	
Dept 265.000 BUILDING & GROUNDS					
101-265.000-802.000	Contracted Services	CINTAS CORPORATION #301	CONTRACT / UNIFORMS - SEPTEMBER	268.75	
101-265.000-802.000-CELLPH	Contracted Services	VERIZON WIRELESS	CELL PHONE SERVICES - SEPTEMBER	11.70	
101-265.000-926.000-HEATFU	UTILITIES	DTE ENERGY	HEATING FUEL USAGE - OCTOBER	29.67	
101-265.000-930.000	Maintenance	AMAZON CAPITAL SERVICES	TIRE PATCH REPAIR SUPPLIES	53.67	
101-265.000-930.000	Maintenance	MUSKEGON FIRE EQUIPMENT	FIRE EXTINGUISHER INSPECTIONS	235.45	
101-265.000-930.000	Maintenance	NAPA - GENUINE PARTS COM	MAINTENANCE SUPPLIES	27.85	
Total For Dept 265.000 BUILDING & GROUNDS				627.09	
Dept 266.000 ATTORNEY					
101-266.000-802.000	Contracted Services	SCHOLTEN FANT	ATTORNEY SERVICES - SEPTEMBER	15,977.50	
101-266.000-802.010	Contracted Services P.C.	SCHOLTEN FANT	ATTORNEY SERVICES - SEPTEMBER	705.00	
Total For Dept 266.000 ATTORNEY				16,682.50	
Dept 301.000 POLICE OFFICER					
101-301.000-802.000	Contracted Services	OTTAWA COUNTY FISCAL SER	WORK AGREEMENT - DEPUTY PATROLS	1,485.00	
Total For Dept 301.000 POLICE OFFICER				1,485.00	
Dept 336.000 FIRE DEPT					
101-336.000-802.000	Contracted Services	CINTAS CORPORATION #301	CONTRACT / UNIFORMS - SEPTEMBER	80.10	
101-336.000-930.000	Maintenance	CARDMEMBER SERVICE	CREDIT CARD CHARGES	26.49	
101-336.000-930.000	Maintenance	MUSKEGON FIRE EQUIPMENT	FIRE EXTINGUISHER INSPECTIONS	150.60	
101-336.000-935.000-MAINT1	Truck Maintenance	O'REILLY AUTOMOTIVE INC	TRUCK MAINTENANCE SUPPLIES	23.78	
101-336.000-935.000-MAINT1	Truck Maintenance	CARDMEMBER SERVICE	CREDIT CARD CHARGES	21.95	
101-336.000-936.000	FIRE SIMULATOR EXPENSES	CARDMEMBER SERVICE	CREDIT CARD CHARGES	808.52	
101-336.000-971.000	CAPITAL OUTLAY	MACQUEEN EMERGENCY	TURNOUT GEAR	78,026.95	
Total For Dept 336.000 FIRE DEPT				79,138.39	
Dept 448.000 STREET LIGHTS					
101-448.000-920.000	Electricity	BILL PAYMENT CENTER	ELECTRIC USAGE - OCTOBER	20.37	
101-448.000-920.000	Electricity	CONSUMERS ENERGY	ELECTRIC USAGE - OCTOBER	8,305.76	
Total For Dept 448.000 STREET LIGHTS				8,326.13	
Dept 449.000 HIGHWAY-M45					
101-449.000-926.000-ELECTR	UTILITIES	BILL PAYMENT CENTER	ELECTRIC USAGE - OCTOBER	39.79	

10/18/2022 03:32 PM
User: DENISE
DB: ALLENDALE

INVOICE GL DISTRIBUTION REPORT FOR ALLENDALE CHARTER TOWNSHIP
EXP CHECK RUN DATES 10/12/2022 - 10/25/2022
UNJOURNALIZED
OPEN

Page: 3/7

GL Number	GL Desc	Vendor	Invoice Description	Amount	Check #
Fund 101 General Fund					
Dept 449.000 HIGHWAY-M45					
101-449.000-926.000-ELECTR UTILITIES		CONSUMERS ENERGY	ELECTRIC USAGE - OCTOBER	936.22	
		Total For Dept 449.000 HIGHWAY-M45		976.01	
Dept 701.000 PLANNING & ZONING					
101-701.000-802.000	Contracted Services	FRESH COAST PLANNING LLC	PLANNING SERVICES - SEPTEMBER	2,016.00	
		Total For Dept 701.000 PLANNING & ZONING		2,016.00	
Dept 751.000 RECREATION AND PARKS					
101-751.000-930.000	Maintenance	CARDMEMBER SERVICE	CREDIT CARD CHARGES	38.94	
		Total For Dept 751.000 RECREATION AND PARKS		38.94	
Dept 790.000 LIBRARY					
101-790.000-732.000	SUPPLIES	COLLER INDUSTRIES INC	NAME TAGS	34.22	
101-790.000-732.000-AVMATE	SUPPLIES	AMAZON	YOUTH A/V	13.99	
101-790.000-732.000-AVMATE	SUPPLIES	AMAZON	YOUTH A/V	9.96	
101-790.000-732.000-AVMATE	SUPPLIES	MICROMARKETING LLC	ADULT A/V	40.00	
101-790.000-732.000-AVMATE	SUPPLIES	MICROMARKETING LLC	ADULT A/V	34.99	
101-790.000-732.000-AVMATE	SUPPLIES	MICROMARKETING LLC	ADULT BOCD	45.00	
101-790.000-732.000-AVMATE	SUPPLIES	MIDWEST TAPE LLC	ADULT A/V	26.94	
101-790.000-732.000-AVMATE	SUPPLIES	MIDWEST TAPE LLC	ADULT A/V	14.97	
101-790.000-732.000-AVMATE	SUPPLIES	MIDWEST TAPE LLC	ADULT & YOUTH A/V	48.69	
101-790.000-732.000-AVMATE	SUPPLIES	MIDWEST TAPE LLC	ADULT A/V	80.13	
101-790.000-732.000-AVMATE	SUPPLIES	MIDWEST TAPE LLC	ADULT A/V	17.22	
101-790.000-732.000-BOOKSX	SUPPLIES	AMAZON	REPLACEMENT BOOK	13.69	
101-790.000-732.000-BOOKSX	SUPPLIES	BAKER & TAYLOR BOOKS LLC	BOOKS	245.98	
101-790.000-732.000-BOOKSX	SUPPLIES	BAKER & TAYLOR BOOKS LLC	BOOKS	432.50	
101-790.000-732.000-BOOKSX	SUPPLIES	CENTER POINT LARGE PRINT	BOOKS	190.56	
101-790.000-732.000-BOOKSX	SUPPLIES	GALE/CENGAGE LEARNING IN	LARGE PRINT BOOKS	61.58	
101-790.000-732.000-BOOKSX	SUPPLIES	GALE/CENGAGE LEARNING IN	LARGE PRINT BOOKS	37.48	
101-790.000-732.000-CHILDB	SUPPLIES	BAKER & TAYLOR BOOKS LLC	CHILDREN'S BOOKS	163.96	
101-790.000-802.000-COPIER	Contracted Services	OFFICE MACHINES COMPANY	COPY MACHINE CONTRACT - OCTOBER	92.18	
101-790.000-802.000-ITMONT	Contracted Services	CARDMEMBER SERVICE	CREDIT CARD CHARGES	13.77	
101-790.000-802.000-LAKELA	Contracted Services	LAKELAND LIBRARY COOPERA	QTRLY BILLING: OCT THRU DEC	5,949.00	
101-790.000-807.000-ADULTP	COMMUNITY PROGRAMS	CARDMEMBER SERVICE	CREDIT CARD CHARGES	13.53	
101-790.000-807.000-ADULTP	COMMUNITY PROGRAMS	CARDMEMBER SERVICE	CREDIT CARD CHARGES	42.95	
101-790.000-807.000-ADULTP	COMMUNITY PROGRAMS	CARDMEMBER SERVICE	CREDIT CARD CHARGES	10.29	
101-790.000-807.000-ADULTP	COMMUNITY PROGRAMS	CARDMEMBER SERVICE	CREDIT CARD CHARGES	9.18	
101-790.000-807.000-ADULTP	COMMUNITY PROGRAMS	CARDMEMBER SERVICE	CREDIT CARD CHARGES	43.04	
101-790.000-807.000-YOUTHHP	COMMUNITY PROGRAMS	ALEX THOMAS & FRIENDS	CLAYMATION WORKSHOP @ 11/12/22	549.00	
101-790.000-807.000-YOUTHHP	COMMUNITY PROGRAMS	AMAZON	PUMPKIN PROGRAM	5.79	
101-790.000-807.000-YOUTHHP	COMMUNITY PROGRAMS	AMAZON	PUMPKIN PROGRAM	10.97	
101-790.000-807.000-YOUTHHP	COMMUNITY PROGRAMS	CARDMEMBER SERVICE	CREDIT CARD CHARGES	732.58	
101-790.000-807.000-YOUTHHP	COMMUNITY PROGRAMS	CARDMEMBER SERVICE	CREDIT CARD CHARGES	4.99	
101-790.000-807.000-YOUTHHP	COMMUNITY PROGRAMS	CORINNE ROBERTS	DRAWING CLASS @ 11/10/22	125.00	
101-790.000-926.000-HEATFU	UTILITIES	DTE ENERGY	HEATING FUEL USAGE - OCTOBER	140.79	
101-790.000-930.000	Maintenance	MUSKEGON FIRE EQUIPMENT	FIRE EXTINGUISHER INSPECTIONS	207.70	
		Total For Dept 790.000 LIBRARY		9,462.62	
		Total For Fund 101 General Fund		149,645.06	
Fund 249 Building Department Fund					
Dept 000.000 REVENUE					
249-000.000-123.000	Prepaid Expense	BS&A SOFTWARE	PAYROLL SYSTEM - ANNUAL SERVICE/SUPPO	39.80	

10/18/2022 03:32 PM
User: DENISE
DB: ALLENDALE

INVOICE GL DISTRIBUTION REPORT FOR ALLENDALE CHARTER TOWNSHIP
EXP CHECK RUN DATES 10/12/2022 - 10/25/2022
UNJOURNALIZED
OPEN

Page: 4/7

GL Number	GL Desc	Vendor	Invoice Description	Amount	Check #
Fund 249 Building Department Fund					
Dept 000.000 REVENUE					
		Total For Dept 000.000 REVENUE		39.80	
		Total For Fund 249 Building Department Fund		39.80	
Fund 252 RENTAL ADMINISTRATION					
Dept 000.000 REVENUE					
252-000.000-123.000	Prepaid Expense	BS&A SOFTWARE	PAYROLL SYSTEM - ANNUAL SERVICE/SUPPO	59.70	
		Total For Dept 000.000 REVENUE		59.70	
Dept 371.000 INSPECTION DEPARTMENT					
252-371.000-720.000-HEALTH EMPLOYERS HEALTH INSURANCE					
		PRIORITY HEALTH	HEALTH INSURANCE - NOVEMBER	1,624.41	
		Total For Dept 371.000 INSPECTION DEPARTMENT		1,624.41	
		Total For Fund 252 RENTAL ADMINISTRATION		1,684.11	
Fund 403 FIRE STATION BUILDING FUND					
Dept 901.000 CONSTRUCTION					
403-901.000-971.000	CAPITAL OUTLAY	ERHARDT CONSTRUCTION COM	FIRE STATION CONSTRUCTION - PYMT #7	591,857.83	
403-901.000-971.000	CAPITAL OUTLAY	SOILS & STRUCTURES INC	MATERIALS TESTING - FIRE STATION BLDG	1,112.20	
		Total For Dept 901.000 CONSTRUCTION		592,970.03	
		Total For Fund 403 FIRE STATION BUILDING FUND		592,970.03	
Fund 494 Dda Development Fund					
Dept 446.000 ROADS					
494-446.000-971.065	ROAD MAINTENANCE	OTTAWA CTY ROAD COMMISSI	ROAD RESURFACING #2	1,071.00	
		Total For Dept 446.000 ROADS		1,071.00	
		Total For Fund 494 Dda Development Fund		1,071.00	
Fund 592 Water & Sewer					
Dept 000.000 REVENUE					
592-000.000-123.000	Prepaid Expense	BS&A SOFTWARE	PAYROLL SYSTEM - ANNUAL SERVICE/SUPPO	298.50	
592-000.000-123.000	Prepaid Expense	MWEA	WASTEWATER ADMINISTRATORS CONFERENCE	670.00	
592-000.000-266.000	COURT ORDER PAYABLE	ILLINOIS STATE DISBURSEM	CHILD SUPPORT DISBURSEMENT	230.77	
		Total For Dept 000.000 REVENUE		1,199.27	
Dept 248.000 ADMINISTRATION					
592-248.000-802.000-ITMONT	Contracted Services	CARDMEMBER SERVICE	CREDIT CARD CHARGES	27.54	
592-248.000-802.000-ITMONT	Contracted Services	CARDMEMBER SERVICE	CREDIT CARD CHARGES	206.98	
592-248.000-802.000-ITMONT	Contracted Services	REHMANN TECHNOLOGY SOLUT	UPDATE 2008R2 DOMAIN FUNCTIONAL LEVEL	40.00	
592-248.000-802.000-ITMONT	Contracted Services	REHMANN TECHNOLOGY SOLUT	DYMO LABEL MAKER ISSUES - WEAVER	140.00	
592-248.000-802.000-ITMONT	Contracted Services	REHMANN TECHNOLOGY SOLUT	DISASTER RECOVERY - OCTOBER	318.00	
592-248.000-802.000-ITMONT	Contracted Services	REHMANN TECHNOLOGY SOLUT	I/T SERVICES - OCTOBER	1,561.20	
592-248.000-810.000	AUDIT	KIEKOVER SCHOLMA & SHUMA	AUDITOR CONSULTATION	140.00	
		Total For Dept 248.000 ADMINISTRATION		2,433.72	
Dept 536.000 WATER					
592-536.000-720.000-HEALTH EMPLOYERS HEALTH INSURANCE					
592-536.000-721.000-SEMINA	PROFESSIONAL DEVELOPMENT	PRIORITY HEALTH	HEALTH INSURANCE - NOVEMBER	6,541.95	
592-536.000-732.000	SUPPLIES	CARDMEMBER SERVICE	CREDIT CARD CHARGES	150.00	
592-536.000-732.000	SUPPLIES	ACTION INDUSTRIAL SUPPLY	SAFETY BOOTS - LAMB	101.20	
592-536.000-732.000	SUPPLIES	ALLENDALE TRUE VALUE HDW	SUPPLIES - WATER DEPT	103.17	
592-536.000-732.000	SUPPLIES	AMAZON CAPITAL SERVICES	WIRELESS EARBUDS	12.48	
592-536.000-732.000	SUPPLIES	AMAZON CAPITAL SERVICES	REFRIGERATOR WATER FILTER	25.00	

UNJOURNALIZED

OPEN

GL Number	GL Desc	Vendor	Invoice Description	Amount	Check #
Fund 592 Water & Sewer					
Dept 536.000 WATER					
592-536.000-732.000	SUPPLIES	AMAZON CAPITAL SERVICES	EYEWASH PRESERVATIVE	63.99	
592-536.000-732.000	SUPPLIES	AMAZON CAPITAL SERVICES	EYEWASH PRESERVATIVE (CREDIT MEMO)	(63.99)	
592-536.000-732.000	SUPPLIES	AMAZON CAPITAL SERVICES	EYE WASH STABILIZING ADDITIVE	31.98	
592-536.000-732.000	SUPPLIES	AUTOZONE STORES LLC	PANEL RETAINERS	31.24	
592-536.000-732.000	SUPPLIES	AUTOZONE STORES LLC	FUSES	14.84	
592-536.000-732.000	SUPPLIES	ELDERS APPLIANCE INC	REPLACEMENT REFRIGERATOR	440.99	
592-536.000-732.000	SUPPLIES	GIVE 'EM A BRAKE SAFETY	LED BULBS FOR SAFETY LIGHTS	119.93	
592-536.000-732.000-METERS	SUPPLIES	CARDMEMBER SERVICE	CREDIT CARD CHARGES	456.72	
592-536.000-732.000-METERS	SUPPLIES	ETNA SUPPLY COMPANY	1.5" WATER METERS	1,065.52	
592-536.000-732.000-METERS	SUPPLIES	ETNA SUPPLY COMPANY	MXU'S	4,023.98	
592-536.000-733.000	WATER COST	OTTAWA COUNTY PUBLIC UTI	WATER USE/SYSTEM MAINTENANCE - SEPTEMBER	146,055.65	
592-536.000-802.000	Contracted Services	CINTAS CORPORATION #301	CONTRACT / UNIFORMS - SEPTEMBER	289.45	
592-536.000-802.000	Contracted Services	H2O COMPLIANCE SERVICES	CROSS CONNECTION CONTROL MGMT - SEPTEMBER	877.50	
592-536.000-803.000	Professional Services	SCHOLTEN FANT	ATTORNEY SERVICES - SEPTEMBER	495.00	
592-536.000-803.000	Professional Services	UTILITY FINANCIAL SOLUTI	WATER COS	9,500.00	
592-536.000-926.000-ELECTR	UTILITIES	BILL PAYMENT CENTER	ELECTRIC USAGE - OCTOBER	63.21	
592-536.000-926.000-ELECTR	UTILITIES	CONSUMERS ENERGY	ELECTRIC USAGE - OCTOBER	777.07	
592-536.000-926.000-HEATFU	UTILITIES	DTE ENERGY	HEATING FUEL USAGE - OCTOBER	779.83	
592-536.000-930.000	MAINTENANCE	AAA LAWN CARE INC	EARLY FALL LAWN MAINTENANCE	332.00	
592-536.000-930.000	MAINTENANCE	ALLIED MECHANICAL SERVIC	HVAC PREVENTATIVE MAINTENANCE	555.00	
592-536.000-930.000	MAINTENANCE	CARDMEMBER SERVICE	CREDIT CARD CHARGES	15.98	
592-536.000-930.000	MAINTENANCE	MUSKEGON FIRE EQUIPMENT	FIRE EXTINGUISHER INSPECTIONS	394.30	
592-536.000-935.000	Truck Maintenance	TOLMAN'S AUTO TECH GROUP	OIL CHANGE	33.54	
592-536.000-935.000	Truck Maintenance	TOLMAN'S AUTO TECH GROUP	OIL CHANGE	32.43	
592-536.000-935.000	Truck Maintenance	TOLMAN'S AUTO TECH GROUP	REAR BRAKES & OIL CHANGE	484.10	
Total For Dept 536.000 WATER				173,804.06	
Dept 537.000 SEWER					
592-537.000-720.000-HEALTH	EMPLOYERS HEALTH INSURANCE	PRIORITY HEALTH	HEALTH INSURANCE - NOVEMBER	6,541.95	
592-537.000-721.000-SEMINA	PROFESSIONAL DEVELOPMENT	CARDMEMBER SERVICE	CREDIT CARD CHARGES	150.00	
592-537.000-732.000	SUPPLIES	ACTION INDUSTRIAL SUPPLY	SAFETY BOOTS - LAMB	101.19	
592-537.000-732.000	SUPPLIES	ALLENDALE TRUE VALUE HDW	SUPPLIES - WASTE DEPT	253.26	
592-537.000-732.000	SUPPLIES	AMAZON CAPITAL SERVICES	WIRELESS EARBUDS	12.47	
592-537.000-732.000	SUPPLIES	AMAZON CAPITAL SERVICES	REFRIGERATOR WATER FILTER	24.99	
592-537.000-732.000	SUPPLIES	AMAZON CAPITAL SERVICES	EYE WASH STABILIZING ADDITIVE	31.97	
592-537.000-732.000	SUPPLIES	AUTOZONE STORES LLC	PANEL RETAINERS	31.24	
592-537.000-732.000	SUPPLIES	CARDMEMBER SERVICE	CREDIT CARD CHARGES	3.45	
592-537.000-732.000	SUPPLIES	CARDMEMBER SERVICE	CREDIT CARD CHARGES	49.04	
592-537.000-732.000	SUPPLIES	CARDMEMBER SERVICE	CREDIT CARD CHARGES	34.50	
592-537.000-732.000	SUPPLIES	ELDERS APPLIANCE INC	REPLACEMENT REFRIGERATOR	441.00	
592-537.000-732.000	SUPPLIES	GIVE 'EM A BRAKE SAFETY	LED BULBS FOR SAFETY LIGHTS	119.92	
592-537.000-732.000	SUPPLIES	HD SUPPLY FACILITIES MAI	CIRCULAR CHART	167.13	
592-537.000-732.000	SUPPLIES	NAPA - GENUINE PARTS COM	CAR WASH & WAX SOAP	10.49	
592-537.000-732.000	SUPPLIES	SAWYER ENGINE & COMPRESS	COMPRESSOR OIL	93.50	
592-537.000-732.000	SUPPLIES	THOMAS SCIENTIFIC LOCKBO	TUBING	25.10	
592-537.000-732.000	SUPPLIES	ULINE	INVENTORY CONTROL CONES	41.40	
592-537.000-732.000-CHEMIC	SUPPLIES	NEO SOLUTIONS INC	CHEMICALS	29,016.00	
592-537.000-732.000-LABSUP	SUPPLIES	HACH COMPANY	LAB PROBE	649.60	
592-537.000-732.000-LABSUP	SUPPLIES	NORTH CENTRAL LABORATORI	CERTIFIED THERMOMETERS	617.72	
592-537.000-732.000-LABSUP	SUPPLIES	NORTH CENTRAL LABORATORI	LAB CONSUMABLES	617.99	
592-537.000-732.000-LABSUP	SUPPLIES	THOMAS SCIENTIFIC LOCKBO	EPTIP	210.18	
592-537.000-802.000	Contracted Services	ALS GROUP USA CORPORATIO	CERIODAPHNIA DUBIA TEST	800.00	

10/18/2022 03:32 PM
User: DENISE
DB: ALLENDALE

INVOICE GL DISTRIBUTION REPORT FOR ALLENDALE CHARTER TOWNSHIP
EXP CHECK RUN DATES 10/12/2022 - 10/25/2022
UNJOURNALIZED

Page: 6/7

GL Number	GL Desc	Vendor	Invoice Description	Amount	Check #
Fund 592 Water & Sewer					
Dept 537.000 SEWER					
592-537.000-802.000	Contracted Services	CINTAS CORPORATION #301	CONTRACT / UNIFORMS - SEPTEMBER	289.45	
592-537.000-802.000	Contracted Services	PREIN & NEWHOF PC INC	LABORATORY SAMPLES/TESTINGS	90.00	
592-537.000-803.000	Professional Services	SCHOLTEN FANT	ATTORNEY SERVICES - SEPTEMBER	60.00	
592-537.000-803.000	Professional Services	UTILITY FINANCIAL SOLUTI	WASTEWATER COS	9,500.00	
592-537.000-926.000-ELECTR	UTILITIES	CONSUMERS ENERGY	ELECTRIC USAGE - OCTOBER	6,993.58	
592-537.000-926.000-HEATFU	UTILITIES	DTE ENERGY	HEATING FUEL USAGE - OCTOBER	1,130.21	
592-537.000-930.000-COLLEC	MAINTENANCE	PLUMMER'S ENVIRONMENTAL	MANHOLE REHABILITATION	13,965.00	
592-537.000-930.000-GENMAI	MAINTENANCE	AAA LAWN CARE INC	EARLY FALL LAWN MAINTENANCE	332.00	
592-537.000-930.000-GENMAI	MAINTENANCE	ALLIED MECHANICAL SERVIC	HVAC PREVENTATIVE MAINTENANCE	555.00	
592-537.000-930.000-GENMAI	MAINTENANCE	CARDMEMBER SERVICE	CREDIT CARD CHARGES	15.97	
592-537.000-930.000-GENMAI	MAINTENANCE	MUSKEGON FIRE EQUIPMENT	FIRE EXTINGUISHER INSPECTIONS	333.40	
592-537.000-930.000-WRRFMA	MAINTENANCE	SANISWEEP INC	CLEAN/SWEEP WWTP DRIVEWAY	960.00	
592-537.000-930.000-WRRFMA	MAINTENANCE	SAWYER ENGINE & COMPRESS	CHECK COMPRESSOR - SERVICE CALL	328.20	
592-537.000-930.000-WRRFMA	MAINTENANCE	SHORELINE POWER SERVICES	TROUBLE SHOOT SLUDGE PUMP	150.00	
592-537.000-935.000	Truck Maintenance	TOLMAN'S AUTO TECH GROUP	OIL CHANGE	33.54	
592-537.000-935.000	Truck Maintenance	TOLMAN'S AUTO TECH GROUP	OIL CHANGE	32.43	
592-537.000-935.000	Truck Maintenance	TOLMAN'S AUTO TECH GROUP	REAR BRAKES & OIL CHANGE	484.10	
592-537.000-971.000	CAPITAL OUTLAY	F&V CONSTRUCTION MGMT IN	PARK LIFT STATION IMPROVEMENTS	16,964.60	
592-537.000-971.000	CAPITAL OUTLAY	KENNEDY INDUSTRIES INC	NEW PUMPS FOR 60TH AVE N LIFT STATION	39,060.00	
592-537.000-971.000	CAPITAL OUTLAY	KENNEDY INDUSTRIES INC	LABOR FOR NEW PUMPS 60TH AVE N	2,000.00	
592-537.000-971.030	WWTP EXPANSION PHASE 2	CARDMEMBER SERVICE	CREDIT CARD CHARGES	1,676.25	
592-537.000-971.030	WWTP EXPANSION PHASE 2	GARY NESTLE II	TRAVEL REIMBURSEMENTS	223.20	
592-537.000-971.030	WWTP EXPANSION PHASE 2	MOORE & BRUGGINK INC	WWTP PLANT DESIGN - PHASE 2 - ENG'G W	17,141.92	
Total For Dept 537.000 SEWER				152,362.94	
Total For Fund 592 Water & Sewer				329,799.99	

10/18/2022 03:32 PM
User: DENISE
DB: ALLENDALE

INVOICE GL DISTRIBUTION REPORT FOR ALLENDALE CHARTER TOWNSHIP
EXP CHECK RUN DATES 10/12/2022 - 10/25/2022
UNJOURNALIZED
OPEN

Page: 7/7

GL Number	GL Desc	Vendor	Invoice Description	Amount	Check #
<hr/>					
Fund Totals:					
			Fund 101 General Fund	149,645.06	
			Fund 249 Building Depa	39.80	
			Fund 252 RENTAL ADMINI	1,684.11	
			Fund 403 FIRE STATION	592,970.03	
			Fund 494 Dda Developme	1,071.00	
			Fund 592 Water & Sewer	329,799.99	
Total For All Funds:				<hr/>	
				1,075,209.99	

INTERIM PAYMENTS
Board Meeting: 10/24/22

DATE	CHECK #	AMOUNT	VENDOR	DESCRIPTION
10/5/2022	EFT	\$ 17,418.10		Fire Fighter Payroll
10/5/2022	EFT	\$ 3,781.78		Fire Fighter Payroll Taxes
10/7/2022	EFT	\$ 731.27		Priority Health HRA Payment
10/13/2022	102466	\$ 120.00	AMBS CALL CENTER	Emergency Call Service
10/13/2022	102467	\$ 599.61	DYKSTRA'S AUTO GROUP INC	Front Brakes & Oil Change
10/13/2022	102468	\$ 25.00	HOLLAND CHARTER TOWNSHIP	Crime Free Multi-Housing Seminar
10/13/2022	102469	\$ 1,308.32	US POSTAL SERVICE	Water/Sewer Billing - 3rd Qtr 2022
10/13/2022	102470	\$ 1,528.15	WEX BANK	Fuel Charges - Utilities Dept
10/13/2022	EFT	\$ 67,991.48		Employee Payroll
10/13/2022	EFT	\$ 20,228.11		Employee Payroll Taxes
10/14/2022	EFT	\$ 2,163.27		Priority Health HRA Payment

\$ 115,895.09 TOTAL

User: Tim

DB: Allendale

PERIOD ENDING 09/30/2022

GL NUMBER	DESCRIPTION	2022 AMENDED BUDGET	YTD BALANCE	YTD BALANCE	ACTIVITY FOR		% BDGT USED
			09/30/2021 NORMAL (ABNORMAL)	09/30/2022 NORMAL (ABNORMAL)	MONTH 09/30/2022 INCREASE (DECREASE)	09/30/2022 (DECREASE)	
Fund 101 - General Fund							
Revenues							
101-000.000-401.000	TAXES	0.00	1,160,280.73	0.13		0.00	100.00
101-000.000-402.000	REAL PROPERTY TAXES	1,173,994.00	0.00	1,170,907.36		3.14	99.74
101-000.000-410.000	PERSONAL PROPERTY TAXES	58,402.00	0.00	60,606.89		0.00	103.78
101-000.000-412.000	DELQ PERSONAL PROP TAX	0.00	0.00	533.67		23.57	100.00
101-000.000-434.000	TOWNSHIP SHARE MOBILE HOME TAX	3,000.00	2,030.00	2,039.50		254.00	67.98
101-000.000-437.000	INDUSTRIAL FACILITY TAX	2,878.00	0.00	2,878.04		0.00	100.00
101-000.000-445.000	PENALTIES AND INTEREST	1,000.00	1,509.89	3,538.26		14.12	353.83
101-000.000-447.000	TAX ADMIN FEE	271,206.00	240,607.67	257,128.36		188,106.03	94.81
101-000.000-451.000	STREET LIGHT ASSESSMENT	89,991.00	84,464.17	91,637.16		0.00	101.83
101-000.000-477.000	CABLE FRANCHISE FEES	145,000.00	71,508.53	74,428.43		0.00	51.33
101-000.000-478.000	LIQUOR LICENSES	0.00	750.00	0.00		0.00	0.00
101-000.000-479.000	STATE LIQUOR LICENSE FEES	3,500.00	3,345.10	7,821.63		0.00	223.48
101-000.000-491.000	Collection Fees Dog License	100.00	80.00	84.00		16.00	84.00
101-000.000-492.000	PASSPORT LICENSE	5,000.00	0.00	0.00		0.00	0.00
101-000.000-493.000	Zoning Compliance Permits	1,000.00	1,200.00	1,170.00		180.00	117.00
101-000.000-494.000	SPECIAL USE PERMITS	500.00	1,500.00	1,000.00		0.00	200.00
101-000.000-495.000	SIGN PERMITS	50.00	20.00	0.00		0.00	0.00
101-000.000-528.000	OTHER FEDERAL GRANTS	107,503.00	48,974.92	789.76		0.00	0.73
101-000.000-564.000	STATE REV SHARING-CVTRS	74,682.00	48,812.00	49,788.00		0.00	66.67
101-000.000-567.000	State Grants Library	22,000.00	24,529.82	34,776.34		0.00	158.07
101-000.000-569.000	STATE GRANTS OTHER	0.00	0.00	1,440.00		1,080.00	100.00
101-000.000-573.000	STATE GRANTS-METRO ACT	11,000.00	11,260.60	11,610.40		0.00	105.55
101-000.000-574.000	STATE REV SHARE-CONST SALES TX	1,916,907.00	1,314,759.00	2,591,648.00		0.00	135.20
101-000.000-581.000	TALLMADGE LIBRARY CONTRIBUTION	105,000.00	107,761.76	112,420.07		0.00	107.07
101-000.000-602.000	ZONING CHANGE CHARGE	1,000.00	1,600.00	2,000.00		600.00	200.00
101-000.000-603.000	ACT 198 APP FEE	0.00	0.00	750.00		750.00	100.00
101-000.000-605.000	ADMIN CHARGE	185,697.00	0.00	185,696.94		185,696.94	100.00
101-000.000-613.000	MISC INCOME	1,000.00	1,435.69	3,060.52		(20.79)	306.05
101-000.000-629.000	Charge For Site Plan Review	0.00	1,000.00	0.00		0.00	0.00
101-000.000-634.000	OPENING/CLOSING BURIALS	17,000.00	19,050.00	17,300.00		700.00	101.76
101-000.000-656.000	Penal Fines	80,000.00	87,292.56	104,496.96		0.00	130.62
101-000.000-657.000	Ordinance Fines	2,000.00	1,803.32	6,491.48		523.33	324.57
101-000.000-658.000	Civil Infraction Fines	100.00	107.05	0.00		0.00	0.00
101-000.000-659.000	LIBRARY FINES/MISC	5,000.00	6,600.84	7,812.23		474.67	156.24
101-000.000-665.000	Interest	1,500.00	1,398.62	5,269.45		1,479.19	351.30
101-000.000-667.000	Hall Rental Income	500.00	900.00	3,090.00		80.00	618.00
101-000.000-667.001	PAVILION RENTAL	1,000.00	1,870.00	1,775.00		110.00	177.50
101-000.000-667.050	Rental-Water Tank-Omnipoint	16,000.00	10,888.87	11,215.53		1,425.11	70.10
101-000.000-675.002	Veteran's Day	0.00	0.00	100.00		100.00	100.00
101-000.000-675.004	CONCERTS/MOVIES IN THE PARK	1,000.00	1,000.00	0.00		0.00	0.00
101-000.000-675.006	VETERAN'S MEMORIAL BRICKS	0.00	(75.00)	(75.00)		0.00	100.00
101-000.000-675.050	Donations - Park	500.00	1,800.00	0.00		0.00	0.00
101-000.000-675.791	DONATIONS - SUMMER READING PGM	500.00	0.00	0.00		0.00	0.00
101-000.000-675.792	DONATIONS & FUNDRAISERS - LIBRARY	0.00	0.00	2,690.00		0.00	100.00
101-000.000-676.000	Miscellaneous Reimbursements	0.00	2,300.00	677.56		0.00	100.00
101-000.000-676.010	Reimbursement Summer Tax Coll.	16,000.00	0.00	5.80		5.80	0.04
101-000.000-676.030	REIMB-ELECTIONS	0.00	1,400.00	0.00		0.00	0.00
101-000.000-676.040	Reimbursement Fire Protection	100,000.00	0.00	0.00		0.00	0.00
101-000.000-676.070	INSURANCE REIMBURSEMENTS	3,000.00	6,618.62	14,126.97		0.00	470.90
101-000.000-677.000	Grants/Foundations	0.00	207.00	225.00		0.00	100.00
101-000.000-693.000	SALE OF ASSETS	0.00	9,000.00	0.00		0.00	0.00
TOTAL REVENUES		4,424,510.00	3,279,591.76	4,842,954.44		381,601.11	109.46

Expenditures

PERIOD ENDING 09/30/2022

GL NUMBER	DESCRIPTION	2022 AMENDED BUDGET	YTD BALANCE	YTD BALANCE	ACTIVITY FOR		% BDGT USED
			09/30/2021 NORMAL (ABNORMAL)	09/30/2022 NORMAL (ABNORMAL)	MONTH 09/30/2022 INCREASE (DECREASE)	MONTH 09/30/2022 (DECREASE)	
Fund 101 - General Fund							
Expenditures							
101.000	Township Board	33,022.00	25,224.92	24,933.52		2,134.43	75.51
171.000	Supervisor	182,595.00	75,385.09	116,576.12		18,368.41	63.84
191.000	FINANCE/ACCT	141,042.00	114,826.44	99,018.01		15,567.53	70.20
209.000	EMPLOYEE INSURANCES	300,443.00	206,587.57	251,977.31		40,667.83	83.87
215.000	CLERK	123,877.00	76,991.11	83,619.89		13,804.65	67.50
223.000	AUDIT	11,000.00	4,960.00	8,970.40		0.00	81.55
247.000	BOARD OF REVIEW	4,530.00	2,095.04	2,001.63		0.00	44.19
248.000	ADMINISTRATION	237,465.00	196,028.32	170,574.17		31,019.95	71.83
253.000	TREASURER	17,120.00	11,519.01	11,792.00		725.28	68.88
257.000	ASSESSOR	226,936.00	135,103.46	145,543.86		19,775.14	64.13
262.000	ELECTIONS	78,553.00	4,158.18	42,455.79		1,668.61	54.05
265.000	BUILDING & GROUNDS	2,333,093.00	213,183.97	2,248,532.21		13,807.06	96.38
266.000	ATTORNEY	132,000.00	59,188.57	50,057.59		12,325.00	37.92
301.000	POLICE OFFICER	470,500.00	317,052.38	310,393.68		0.00	65.97
336.000	FIRE DEPT	839,373.00	574,657.87	446,315.35		68,681.39	53.17
445.000	DRAIN AT LARGE	55,681.00	43,022.59	55,680.10		0.00	100.00
446.000	ROADS	30,720.00	23,040.00	23,040.00		7,680.00	75.00
448.000	STREET LIGHTS	122,500.00	88,866.67	72,378.30		7,847.93	59.08
449.000	HIGHWAY-M45	228,972.00	130,848.20	119,345.54		14,671.92	52.12
567.000	CEMETERY	44,741.00	30,381.10	23,947.93		2,956.85	53.53
672.000	LIFELONG LEARNERS	35,514.00	21,868.36	24,704.51		5,026.77	69.56
701.000	PLANNING & ZONING	113,046.00	97,072.54	53,515.23		5,856.29	47.34
702.000	ZONING BOARD OF APPEALS	2,603.00	291.08	0.00		0.00	0.00
704.000	PLANNING COMMISSION	17,226.00	15,678.67	6,810.11		924.77	39.53
751.000	RECREATION AND PARKS	125,812.00	67,898.88	71,602.32		11,432.96	56.91
753.000	COMMUNITY PROMOTIONS	85,652.00	0.00	63,449.90		4,403.44	74.08
753.001	COMMUNITY PROMOTIONS - 4TH OF JULY	0.00	20,000.00	0.00		0.00	0.00
753.004	COMMUNITY PROMOTIONS CONCERTS/MOVIES	0.00	4,218.01	0.00		0.00	0.00
753.300	COMMUNITY PROMOTIONS - ADMINISTRATION	0.00	14,780.79	0.00		0.00	0.00
790.000	LIBRARY	480,352.00	288,614.21	315,755.92		43,747.62	65.73
TOTAL EXPENDITURES		6,474,368.00	2,863,543.03	4,842,991.39		343,093.83	74.80
Fund 101 - General Fund:							
TOTAL REVENUES		4,424,510.00	3,279,591.76	4,842,954.44		381,601.11	109.46
TOTAL EXPENDITURES		6,474,368.00	2,863,543.03	4,842,991.39		343,093.83	74.80
NET OF REVENUES & EXPENDITURES		(2,049,858.00)	416,048.73	(36.95)		38,507.28	0.00

FUND BALANCE = \$4,287,899

CASH BALANCE = \$4,312,331

PERIOD ENDING 09/30/2022

GL NUMBER	DESCRIPTION	2022 AMENDED BUDGET	YTD BALANCE	YTD BALANCE	ACTIVITY FOR		% BDGT USED
			09/30/2021	09/30/2022	MONTH	09/30/2022	
Fund 249 - Building Department Fund							
Revenues							
249-000.000-480.000	BUILDING PERMITS	170,000.00	148,904.75	150,384.00		20,580.00	88.46
249-000.000-481.000	Electrical Permits	68,000.00	54,943.00	46,239.20		5,995.00	68.00
249-000.000-482.000	PLUMBING PERMITS	50,000.00	38,080.00	34,104.00		5,576.00	68.21
249-000.000-483.000	Mechanical Permits	65,000.00	46,840.00	41,862.00		5,622.00	64.40
249-000.000-613.000	MISC INCOME	0.00	100.00	0.00		0.00	0.00
249-000.000-665.000	Interest	15.00	10.67	44.18		8.11	294.53
TOTAL REVENUES		353,015.00	288,878.42	272,633.38		37,781.11	77.23
Expenditures							
223.000	AUDIT	500.00	300.00	481.90		0.00	96.38
248.000	ADMINISTRATION	12,405.00	0.00	12,404.53		12,404.53	100.00
371.000	INSPECTION DEPARTMENT	338,848.00	275,201.43	261,403.02		63,285.12	77.14
TOTAL EXPENDITURES		351,753.00	275,501.43	274,289.45		75,689.65	77.98
Fund 249 - Building Department Fund:							
TOTAL REVENUES		353,015.00	288,878.42	272,633.38		37,781.11	77.23
TOTAL EXPENDITURES		351,753.00	275,501.43	274,289.45		75,689.65	77.98
NET OF REVENUES & EXPENDITURES		1,262.00	13,376.99	(1,656.07)		(37,908.54)	131.23

FUND BALANCE = \$30,907

CASH BALANCE = \$31,173

User: Tim

DB: Allendale

PERIOD ENDING 09/30/2022

GL NUMBER	DESCRIPTION	2022 AMENDED BUDGET	YTD BALANCE 09/30/2021 NORMAL (ABNORMAL)	YTD BALANCE 09/30/2022 NORMAL (ABNORMAL)	ACTIVITY FOR MONTH 09/30/2022 INCREASE (DECREASE)	% BDGT USED
Fund 252 - RENTAL ADMINISTRATION						
Revenues						
252-000.000-485.000	RENTAL REGISTRATION	30,980.00	30,950.00	30,390.00	10.00	98.10
252-000.000-617.000	RENTAL INSPECTIONS	53,475.00	32,950.00	50,245.00	1,615.00	93.96
252-000.000-618.000	LANDLORD RENTAL FINES	100.00	100.00	0.00	0.00	0.00
252-000.000-665.000	Interest	10.00	6.65	28.47	8.76	284.70
TOTAL REVENUES		84,565.00	64,006.65	80,663.47	1,633.76	95.39
Expenditures						
371.000	INSPECTION DEPARTMENT	92,646.00	59,825.96	68,828.77	11,927.41	74.29
TOTAL EXPENDITURES		92,646.00	59,825.96	68,828.77	11,927.41	74.29
Fund 252 - RENTAL ADMINISTRATION:						
TOTAL REVENUES		84,565.00	64,006.65	80,663.47	1,633.76	95.39
TOTAL EXPENDITURES		92,646.00	59,825.96	68,828.77	11,927.41	74.29
NET OF REVENUES & EXPENDITURES		(8,081.00)	4,180.69	11,834.70	(10,293.65)	146.45

FUND BALANCE = \$32,622

CASH BALANCE = \$33,670

User: Tim

DB: Allendale

PERIOD ENDING 09/30/2022

GL NUMBER	DESCRIPTION	2022 AMENDED BUDGET	YTD BALANCE 09/30/2021 NORMAL (ABNORMAL)	YTD BALANCE 09/30/2022 NORMAL (ABNORMAL)	ACTIVITY FOR MONTH 09/30/2022 INCREASE (DECREASE)	% BDGT USED
Fund 253 - Library Building Debt Fund						
Revenues						
253-000.000-665.000	Interest	30.00	28.27	67.19	25.21	223.97
TOTAL REVENUES		30.00	28.27	67.19	25.21	223.97
Fund 253 - Library Building Debt Fund:						
TOTAL REVENUES		30.00	28.27	67.19	25.21	223.97
TOTAL EXPENDITURES		0.00	0.00	0.00	0.00	0.00
NET OF REVENUES & EXPENDITURES		30.00	28.27	67.19	25.21	223.97

FUND BALANCE = \$96,853

CASH BALANCE = \$96,853

User: Tim

DB: Allendale

PERIOD ENDING 09/30/2022

GL NUMBER	DESCRIPTION	2022 AMENDED BUDGET	YTD BALANCE 09/30/2021 NORMAL (ABNORMAL)	YTD BALANCE 09/30/2022 NORMAL (ABNORMAL)	ACTIVITY FOR MONTH 09/30/2022 INCREASE (DECREASE)	% BDGT USED
Fund 254 - Cemetery Improvement Fund						
Revenues						
254-000.000-643.000	GRAVE SITES	15,000.00	12,200.00	12,200.00	1,600.00	81.33
254-000.000-665.000	Interest	30.00	25.04	91.62	28.28	305.40
254-000.000-670.000	PROPERTY RENTAL	150.00	150.00	150.00	0.00	100.00
TOTAL REVENUES		15,180.00	12,375.04	12,441.62	1,628.28	81.96
Expenditures						
223.000	AUDIT	0.00	150.00	240.95	0.00	100.00
248.000	ADMINISTRATION	9.00	0.00	8.48	8.48	94.22
TOTAL EXPENDITURES		9.00	150.00	249.43	8.48	2,771.44
Fund 254 - Cemetery Improvement Fund:						
TOTAL REVENUES		15,180.00	12,375.04	12,441.62	1,628.28	81.96
TOTAL EXPENDITURES		9.00	150.00	249.43	8.48	2,771.44
NET OF REVENUES & EXPENDITURES		15,171.00	12,225.04	12,192.19	1,619.80	80.37

FUND BALANCE = \$108,654

CASH BALANCE = \$108,654

PERIOD ENDING 09/30/2022

GL NUMBER	DESCRIPTION	2022	YTD BALANCE		YTD BALANCE		ACTIVITY FOR		% BDGT USED
		AMENDED BUDGET	NORMAL	09/30/2021 (ABNORMAL)	09/30/2022 (ABNORMAL)	INCREASE	MONTH 09/30/2022 (DECREASE)		
Fund 270 - Allendale Historical Society									
Revenues									
270-248.000-665.000	Interest	5.00		2.57		6.95		2.10	139.00
270-804.000-644.030	150Th Book Sales	0.00		30.00		90.00		0.00	100.00
TOTAL REVENUES		5.00		32.57		96.95		2.10	1,939.00
Expenditures									
804.000	KNOWLTON HOUSE	1,550.00		1,399.54		0.00		0.00	0.00
TOTAL EXPENDITURES		1,550.00		1,399.54		0.00		0.00	0.00
Fund 270 - Allendale Historical Society:									
TOTAL REVENUES		5.00		32.57		96.95		2.10	1,939.00
TOTAL EXPENDITURES		1,550.00		1,399.54		0.00		0.00	0.00
NET OF REVENUES & EXPENDITURES		(1,545.00)		(1,366.97)		96.95		2.10	6.28

FUND BALANCE = \$8,108

CASH BALANCE = \$8,108

User: Tim

DB: Allendale

PERIOD ENDING 09/30/2022

GL NUMBER	DESCRIPTION	2022 AMENDED BUDGET	YTD BALANCE 09/30/2021 NORMAL (ABNORMAL)	YTD BALANCE 09/30/2022 NORMAL (ABNORMAL)	ACTIVITY FOR MONTH 09/30/2022 INCREASE (DECREASE)	% BDGT USED
Fund 285 - AMERICAN RESCUE PLAN ACT						
Revenues						
285-000.000-665.000	Interest	0.00	0.00	2,207.50	731.20	100.00
TOTAL REVENUES		0.00	0.00	2,207.50	731.20	100.00
Fund 285 - AMERICAN RESCUE PLAN ACT:						
TOTAL REVENUES		0.00	0.00	2,207.50	731.20	100.00
TOTAL EXPENDITURES		0.00	0.00	0.00	0.00	0.00
NET OF REVENUES & EXPENDITURES		0.00	0.00	2,207.50	731.20	100.00

FUND BALANCE = \$2,352

CASH BALANCE = \$2,809,166

PERIOD ENDING 09/30/2022

GL NUMBER	DESCRIPTION	2022 AMENDED BUDGET	YTD BALANCE	YTD BALANCE	ACTIVITY FOR		% BDGT USED
			09/30/2021 NORMAL (ABNORMAL)	09/30/2022 NORMAL (ABNORMAL)	MONTH 09/30/2022 INCREASE (DECREASE)		
Fund 403 - FIRE STATION BUILDING FUND							
Revenues							
403-000.000-582.000	CONTRIBUTION-DDA	3,500,000.00	0.00	3,500,000.00		0.00	100.00
403-000.000-583.000	CONTRIBUTION-GENERAL FUND	2,110,000.00	0.00	2,110,000.00		0.00	100.00
403-000.000-584.000	CONTRIBUTION-OTHER	1,000,000.00	0.00	1,000,000.00		1,000,000.00	100.00
403-000.000-665.000	Interest	0.00	0.00	3,202.96		918.25	100.00
TOTAL REVENUES		6,610,000.00	0.00	6,613,202.96		1,000,918.25	100.05
Expenditures							
901.000	CONSTRUCTION	6,610,000.00	0.00	3,085,426.40		799,331.15	46.68
TOTAL EXPENDITURES		6,610,000.00	0.00	3,085,426.40		799,331.15	46.68
Fund 403 - FIRE STATION BUILDING FUND:							
TOTAL REVENUES		6,610,000.00	0.00	6,613,202.96		1,000,918.25	100.05
TOTAL EXPENDITURES		6,610,000.00	0.00	3,085,426.40		799,331.15	46.68
NET OF REVENUES & EXPENDITURES		0.00	0.00	3,527,776.56		201,587.10	100.00

FUND BALANCE = \$3,527,777

CASH BALANCE = \$3,527,777

User: Tim

DB: Allendale

PERIOD ENDING 09/30/2022

GL NUMBER	DESCRIPTION	2022 AMENDED BUDGET	YTD BALANCE	YTD BALANCE	ACTIVITY FOR		% BDGT USED
			09/30/2021 NORMAL (ABNORMAL)	09/30/2022 NORMAL (ABNORMAL)	MONTH 09/30/2022 INCREASE (DECREASE)		
Fund 494 - Dda Development Fund							
Revenues							
494-000.000-401.000	TAXES	0.00	913,160.18	0.00		0.00	0.00
494-000.000-402.000	REAL PROPERTY TAXES	1,761,292.00	813,714.48	1,782,866.38		716,852.20	101.22
494-000.000-410.000	PERSONAL PROPERTY TAXES	75,175.00	30,040.97	60,035.31		13,641.28	79.86
494-000.000-437.000	INDUSTRIAL FACILITY TAX	4,011.00	0.00	3,455.70		0.00	86.16
494-000.000-613.000	MISC INCOME	0.00	500.00	950.00		0.00	100.00
494-000.000-665.000	Interest	2,000.00	1,530.77	1,657.87		596.04	82.89
494-000.000-678.000	PPT LOSS REIMB	70,000.00	0.00	0.00		0.00	0.00
TOTAL REVENUES		1,912,478.00	1,758,946.40	1,848,965.26		731,089.52	96.68
Expenditures							
223.000	AUDIT	4,000.00	2,400.00	3,855.20		0.00	96.38
248.000	ADMINISTRATION	3,757,523.00	63,591.42	3,570,653.76		38,922.99	95.03
266.000	ATTORNEY	10,000.00	0.00	69.00		0.00	0.69
446.000	ROADS	140,000.00	113,527.94	81,380.96		0.00	58.13
901.000	CONSTRUCTION	238,879.00	214,663.39	126,007.90		0.00	52.75
TOTAL EXPENDITURES		4,150,402.00	394,182.75	3,781,966.82		38,922.99	91.12
Fund 494 - Dda Development Fund:							
TOTAL REVENUES		1,912,478.00	1,758,946.40	1,848,965.26		731,089.52	96.68
TOTAL EXPENDITURES		4,150,402.00	394,182.75	3,781,966.82		38,922.99	91.12
NET OF REVENUES & EXPENDITURES		(2,237,924.00)	1,364,763.65	(1,933,001.56)		692,166.53	86.37

FUND BALANCE = \$2,289,898

CASH BALANCE = \$2,289,898

PERIOD ENDING 09/30/2022

GL NUMBER	DESCRIPTION	2022 AMENDED BUDGET	YTD BALANCE	YTD BALANCE	ACTIVITY FOR		% BDGT USED
			09/30/2021 NORMAL (ABNORMAL)	09/30/2022 NORMAL (ABNORMAL)	MONTH 09/30/2022 INCREASE (DECREASE)		
Fund 592 - Water & Sewer							
Revenues							
592-248.000-631.000	FINANCE AGREEMENT FEE	200.00	150.00	90.00	30.00	45.00	
592-248.000-632.000	CONNECTION FEES-WATER	150,000.00	192,086.00	193,851.00	31,970.00	129.23	
592-248.000-632.010	CONNECTIONS FINANCE-WATER	5,000.00	10,729.00	10,720.00	0.00	214.40	
592-248.000-633.000	CONNECTION FEES-SEWER	210,000.00	254,245.00	261,775.00	39,800.00	124.65	
592-248.000-633.010	CONNECTIONS FINANCE-SEWER	20,000.00	11,750.00	5,875.00	5,875.00	29.38	
592-248.000-647.000	Penalties	25,000.00	21,023.53	19,384.64	(202.66)	77.54	
592-248.000-665.000	Interest	3,000.00	2,750.86	7,236.29	2,140.22	241.21	
592-248.000-665.010	Interest On Assessments	9,000.00	7,811.32	6,972.50	771.05	77.47	
592-536.000-582.000	CONTRIBUTION-DDA	0.00	272,000.00	0.00	0.00	0.00	
592-536.000-613.000	MISC INCOME	2,500.00	80,463.97	1,880.02	263.26	75.20	
592-536.000-619.000	INSPECTIONS	4,000.00	4,294.00	1,218.75	0.00	30.47	
592-536.000-620.000	WATER METER CHARGES	25,000.00	35,864.50	39,915.50	4,950.00	159.66	
592-536.000-630.000	WATER HYDRANT USAGE	4,000.00	3,681.41	2,233.37	0.00	55.83	
592-536.000-646.000	Utility Charges	2,925,000.00	2,481,278.77	2,922,902.42	1,559,045.97	99.93	
592-536.000-667.020	ROBINSON TWP HYDRANT RENT	450.00	0.00	450.00	0.00	100.00	
592-536.000-667.050	Rental-Water Tank-Omnipoint	15,500.00	10,888.87	11,215.53	1,425.12	72.36	
592-536.000-674.900	DEVELOPER CONTRIBUTIONS	0.00	153,650.00	0.00	0.00	0.00	
592-537.000-569.020	STATE GRANTS	15,000.00	0.00	0.00	0.00	0.00	
592-537.000-582.000	CONTRIBUTION-DDA	0.00	0.00	(243,386.72)	0.00	100.00	
592-537.000-613.000	MISC INCOME	2,000.00	1,282.16	762.80	0.00	38.14	
592-537.000-619.000	INSPECTIONS	4,000.00	488.00	450.00	0.00	11.25	
592-537.000-646.000	Utility Charges	2,404,771.00	1,671,242.23	2,069,185.42	786,859.97	86.05	
592-537.000-646.010	Sewer Charges - Leprino	100,860.00	50,430.00	58,835.00	0.00	58.33	
TOTAL REVENUES		5,925,281.00	5,266,109.62	5,371,566.52	2,432,927.93	90.66	
Expenditures							
248.000	ADMINISTRATION	208,557.00	35,653.86	202,975.47	140,066.61	97.32	
536.000	WATER	2,495,140.00	1,531,766.50	1,758,024.28	290,578.32	70.46	
537.000	SEWER	2,620,843.00	828,626.84	1,404,848.04	239,099.54	53.60	
906.000	DEBT	615,251.00	120,638.56	108,247.00	0.00	17.59	
TOTAL EXPENDITURES		5,939,791.00	2,516,685.76	3,474,094.79	669,744.47	58.49	
Fund 592 - Water & Sewer:							
TOTAL REVENUES		5,925,281.00	5,266,109.62	5,371,566.52	2,432,927.93	90.66	
TOTAL EXPENDITURES		5,939,791.00	2,516,685.76	3,474,094.79	669,744.47	58.49	
NET OF REVENUES & EXPENDITURES		(14,510.00)	2,749,423.86	1,897,471.73	1,763,183.46	3,076.99	

FUND BALANCE = \$40,730,809

CASH BALANCE = \$8,295,315

PERIOD ENDING 09/30/2022

GL NUMBER	DESCRIPTION	2022 AMENDED BUDGET	YTD BALANCE	YTD BALANCE	ACTIVITY FOR		% BDGT USED
			09/30/2021 NORMAL (ABNORMAL)	09/30/2022 NORMAL (ABNORMAL)	MONTH 09/30/2022 INCREASE (DECREASE)		
Fund 811 - Road Fund							
Revenues							
811-000.000-452.000	SPECIAL ASSESS-ROADS	25,000.00	25,451.91	22,972.88		0.00	91.89
811-000.000-665.000	Interest	100.00	130.72	422.98		127.05	422.98
811-000.000-665.010	Interest On Assessments	2,000.00	1,134.43	670.23		0.00	33.51
TOTAL REVENUES		27,100.00	26,717.06	24,066.09		127.05	88.80
Expenditures							
000.000	REVENUE	0.00	(30.00)	0.00		0.00	0.00
223.000	AUDIT	1,000.00	600.00	963.80		0.00	96.38
248.000	ADMINISTRATION	0.00	0.00	5,302.27		5,302.27	100.00
446.000	ROADS	105,302.00	75,685.29	0.00		0.00	0.00
TOTAL EXPENDITURES		106,302.00	76,255.29	6,266.07		5,302.27	5.89
Fund 811 - Road Fund:							
TOTAL REVENUES		27,100.00	26,717.06	24,066.09		127.05	88.80
TOTAL EXPENDITURES		106,302.00	76,255.29	6,266.07		5,302.27	5.89
NET OF REVENUES & EXPENDITURES		(79,202.00)	(49,538.23)	17,800.02		(5,175.22)	22.47
TOTAL REVENUES - ALL FUNDS							
TOTAL REVENUES - ALL FUNDS		19,352,164.00	10,696,685.79	19,068,865.38		4,588,465.52	98.54
TOTAL EXPENDITURES - ALL FUNDS		23,726,821.00	6,187,543.76	15,534,113.12		1,944,020.25	65.47
NET OF REVENUES & EXPENDITURES		(4,374,657.00)	4,509,142.03	3,534,752.26		2,644,445.27	80.80

FUND BALANCE = \$488,104

CASH BALANCE = 488,104

**ALLENDALE CHARTER TOWNSHIP
PLANNING COMMISSION MEETING**

October 3, 2022

7:00 p.m.

Allendale Township Public Meeting Room

1. Call the Meeting to Order
2. Roll Call:
Present: Longcore, Adams, Westerling, Nadda, Chapla
Absent: Zuniga, Zeinstra
Staff and Guests Present: Planner Greg Ransford, Klynt Marcusse, Jeff Brinks, Kelly Kuiper, Steve Griffioen
3. Communications and Correspondence: None
4. Motion by Westerling to approve the September 6, 2022, Planning Commission Minutes as presented. Seconded by Nadda. **Approved 5-0**
5. Motion by Longcore to approve the October 3, 2022, Planning Commission Agenda as presented. Seconded by Adams. **Approved 5-0**
6. Public Comments for *non-public hearing item*:
Chairperson Longcore opened the public comment section for non-public hearing items.
 - A. Great Lakes Excavating Service – Industrial Zoning District Processing Inquiry.
Kelly Kuiper introduced the inquiry regarding putting a concrete crushing operation in Allendale and whether the ACTZO allows it.

Commissioners asked about the process of crushing concrete and why the mobile units don't go directly to the mining sites themselves. Ms. Kuiper explained some of the process and stated that the crushing/processing is not an allowed use at those sites without extra approvals.

Consensus among the Commissioners was that this may fit under the current ordinance as a special use and there is not a need to amend the ordinance.

Seeing no more comments, Chairperson Longcore closed the public comment section.
7. Public Hearings: None
8. Site Plan Review: None
9. New Business: None
10. Old Business:
 - A. Marcusse Office Building – 5630 Lake Michigan Dr.
Jeff Brinks of Venture Engineering, representing the applicant, introduced the project and the changes that had been made and problems that had been addressed.

Planner Ransford reviewed the memo that he prepared.

The applicant is requesting relief from setback requirements to allow them the space to put the correct amount of parking spaces in place. Planner Ransford clarified that the Commission has the authority to grant this request as presented according to the ACT Zoning Ordinance.

Motion by Nadda to approve the Marcusse Office Building as presented. Seconded by Westerling.
Approved 5-0

B. Griffioen Special Use Request – 10259 52nd Ave.

- Farm equipment storage with incidental repair and service

Mr. Griffioen presented the project stating that the discussion left off at the question of whether the building would be considered an accessory or principal building.

Planner Ransford discussed this question with Township legal counsel, and it was confirmed that it would be considered part of the principal use as stated in Section 3.12 and therefore no additional accessory building requirements would be place on the building.

Commissioners directed Planner Ransford to set this item for public hearing.

C. Zoning Ordinance Text Discussion – Section 23.08 – Removal of Topsoil, Sand, Gravel, or Other Materials

Planner Ransford reviewed his memo regarding this ordinance and the comparison between Allendale and three (3) other townships in the area.

Mr. Nadda asked about noise level requirements. Planner Ransford explained that Allendale's noise restrictions are controlled by a General Law ordinance and thus is regulated by the Township Board.

Commissioners noted that Allendale's mining requirements seem to be in line with the other townships in the area.

Common consensus among the Commissioners is that they are satisfied that the Commission is regulating appropriately. Direction was provided to Ransford to summarize their conclusions to Supervisor Elenbaas.

11. Public Comments:

Seeing no public present, Chairperson Longcore opened and closed the public comment section.

12. Township Board Reports: None

13. Commissioner and Staff Comments:

Mr. Westerling inquired about Centennial Farms, Aldi, and Tommy's regarding the traffic study and a possible requirement for a light.

Mr. Longcore explained that there was a meeting regarding this issue. And MDOT will be reviewing this issue further to make a determination on whether a traffic light would be required.

Mr. Adams suggested that there be a model created in regard to traffic that new projects could just be entered in, and potential issues could be addressed before they became a problem.

Mr. Adams thanked Planner Ransford for putting together the information on the surrounding communities regarding sand mining requirements.

Planner Ransford asked if it would be beneficial to have Steve Witte, representing Tommy's Car Wash, attend a meeting to discuss the traffic study before MDOT comes back with a determination? Consensus among the Commissioners was that he could, but not necessary until MDOT makes a decision.

Planner Ransford noted that in Olive Township there is a facility that stockpiles concrete pieces that Commissioners could look at in reference to what landscaping they could require for a concrete crushing facility if there would be an application.

14. Chairperson Longcore adjourned the meeting at 8:31 p.m.

Next meeting October 17, 2022, at 7:00 p.m.

Minutes respectfully submitted by Kelli McGovern

**PROPOSED
PROCEEDINGS OF THE ALLENDALE
TOWNSHIP ELECTION COMMISSION
OCTOBER 10, 2022**

The Allendale Township Election Commission met at the Allendale Township Hall, located at 6676 Lake Michigan Drive, on Monday, October 10, 2022, at 5:45 p.m. and was called to order at 5:45 a.m. by Ms. Hansen.

Present: Ms. Vander Veen; Ms. Kraker; and Ms. Hansen. (3)

Absent: None (0)

Staff and Guest Present: Bruce Zeinstra

EC 22-009 Ms. Vander Veen moved to approve the agenda of today as presented. The motion passed.

EC 22-010 Ms. Kraker moved to approve the Minutes of the July 11, 2022, Election Commission meeting. The motion passed.

Action Items

EC 22-011 Ms. Vander Veen moved to approve and authorize the clerk to sign Resolution 2022-03EC; a resolution appointing Election Inspectors for Allendale Charter Township for the November 8, 2022, General Election. The motion passed.

Discussion Items- None

Commissioner Comments- None

EC 22-012 Ms. Vander Veen moved to adjourn the meeting at 5:49 p.m. The motion passed.

Jody L. Hansen, Clerk
Of the Township of Allendale



County of Ottawa

Sheriff's Office

Steve A. Kempker
Sheriff

Valerie L. Weiss
Undersheriff



Headquarters/Administration

12220 Fillmore Street
West Olive, Michigan 49460
(616) 738-4000 or (888) 731-1001
Fax: (616) 738-4062

Correctional Facility

12130 Fillmore Street
West Olive, Michigan 49460
(616) 786-4140 or (888) 731-1001
Fax: (616) 738-4099

Date: 10-11-2022

To: Allendale Township Supervisor Adam Elenbaas

From: Sgt. Cal Keuning

RE: Monthly Report (September 2022)

The Sheriff's Office during the month of September responded to 527 calls for service.

Allendale Township Basic EMT and MFR units, with assistance of general road patrol responded to 50 medicals and 3 personal injury accidents.

Traffic contacts during the month of September, deputies issued 100 total tickets.

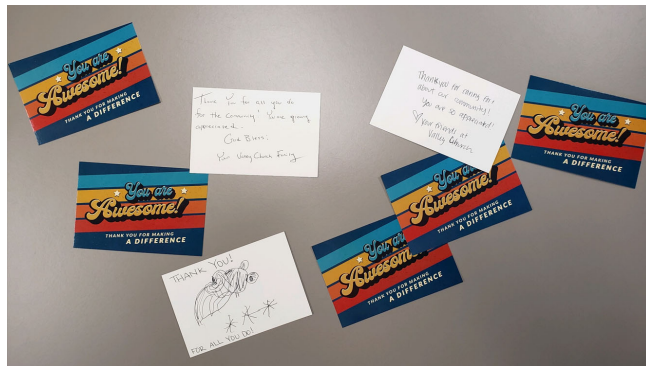
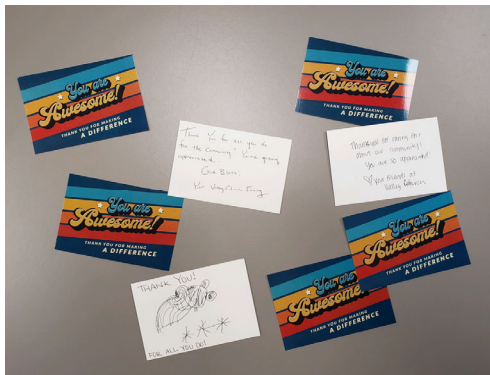
Cops n Cones:

The Life Long Learner group and area residents met with Deputy Ortman, Deputy Apolo, and Sgt. Keuning at Affogato's Ice Cream and Coffee. Residents spoke with the deputies while enjoying ice cream and coffee of their choice.



Thank you cards from Valley Church:

Numerous thank you cards were given to Allendale deputies and the detective from Valley Church in Allendale.



Guest Storytime Reader (Allendale Library):

Deputy Ortman and Sgt. Keuning read books to children at the Allendale Township Park. During song time, Sgt. Keuning played his Cajon (drum box) to keep the beat while the children sang songs.



School News:

Deputy Ortman taught TEAM to the 5th grade classrooms. Lessons were on gateway drugs, consequences, and making good decisions.

Six different class presentations were taught to the 6th graders. Lessons were on threatening and harassing communications, and appropriate use of technology.


In 7th grade health class, the lessons were on gateway drugs, and vaping. Deputy Ortman also focused on making good decisions.

Speed Trailer:

The speed trailer continued to make its way around Allendale Township. The trailer monitored traffic on Fillmore St. near 52nd Ave. The trailer will be making its way to the high school speed zone area on 68th Ave.

Thank you

Sgt. Cal Keuning



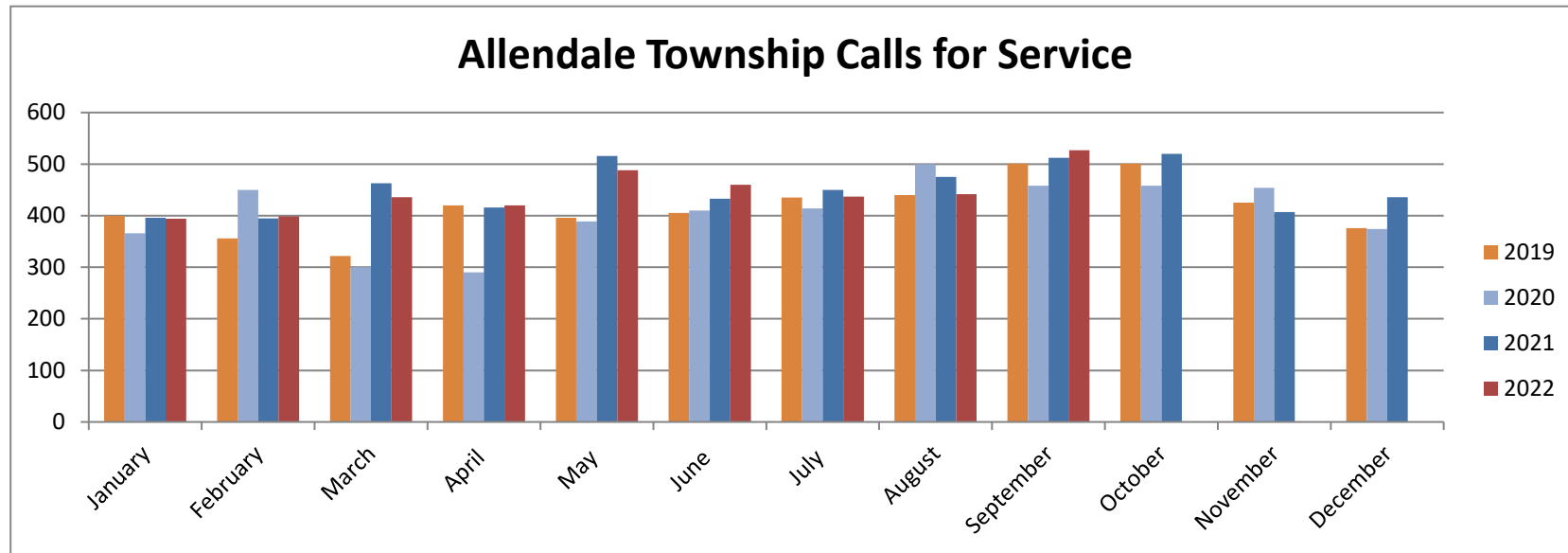
Allendale Township Community Policing

Sergeant Cal Keuning ckeuning@miOttawa.org	Deputy John Ortman jortman@miOttawa.org	Deputy Zachary Martinie zmartinie@miOttawa.org	Deputy Joseph Apolo japolo@miottawa.org
---	--	---	--

For emergencies, dial 911. For non-emergencies, dial 1-800-249-0911.

Total Number of Calls

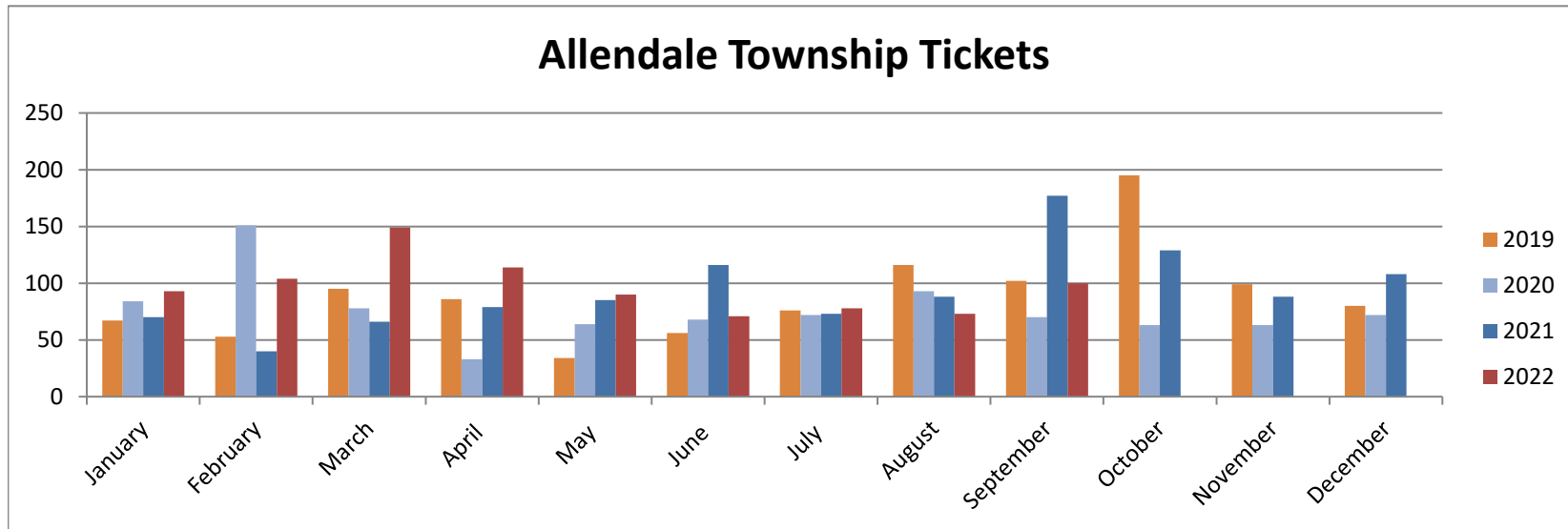
	January	February	March	April	May	June	July	August	September	October	November	December
2019	400	356	322	420	396	405	435	440	501	501	425	376
2020	366	450	300	290	389	410	414	500	458	458	454	374
2021	396	395	463	416	516	433	450	475	512	520	407	436
2022	394	399	436	420	488	460	437	442	527			



Total Tickets by Month

	January	February	March	April	May	June	July	August	September	October	November	December
2019	67	53	95	86	34	56	76	116	102	195	99	80

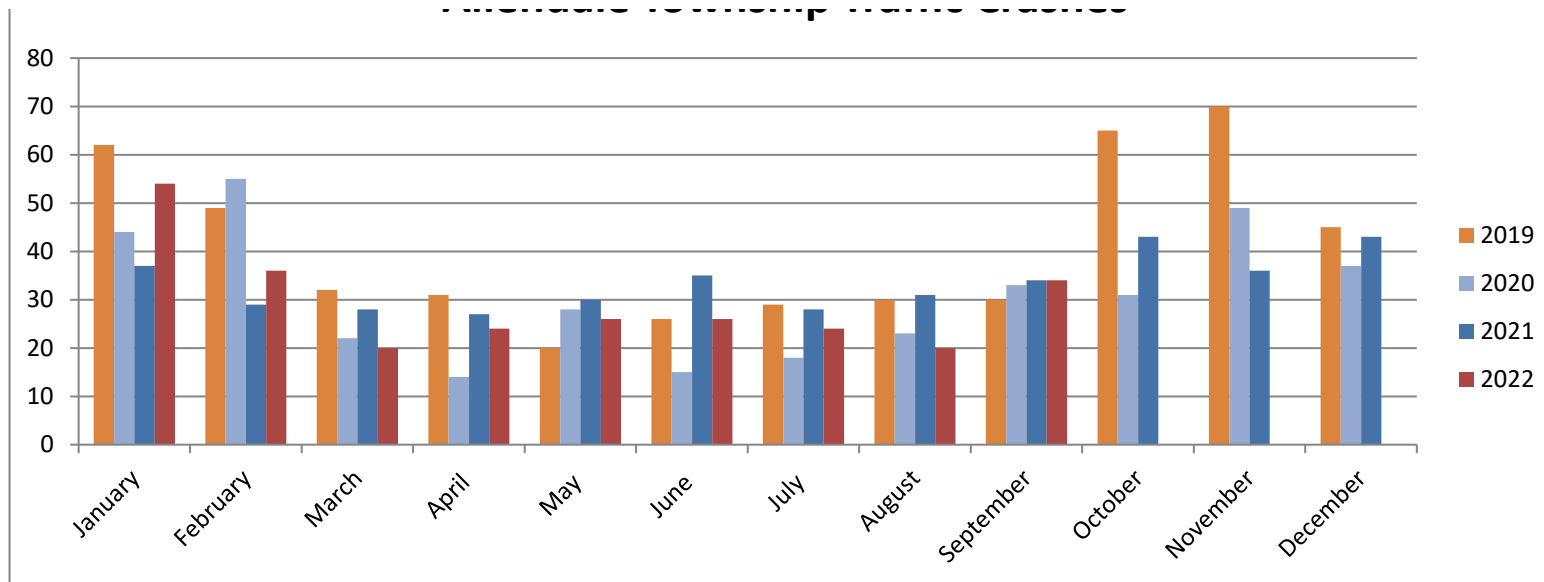
2020	84	151	78	33	64	68	72	93	70	63	63	72
2021	70	40	66	79	85	116	73	88	177	129	88	108
2022	93	104	149	114	90	71	78	73	100			



Traffic Crashes

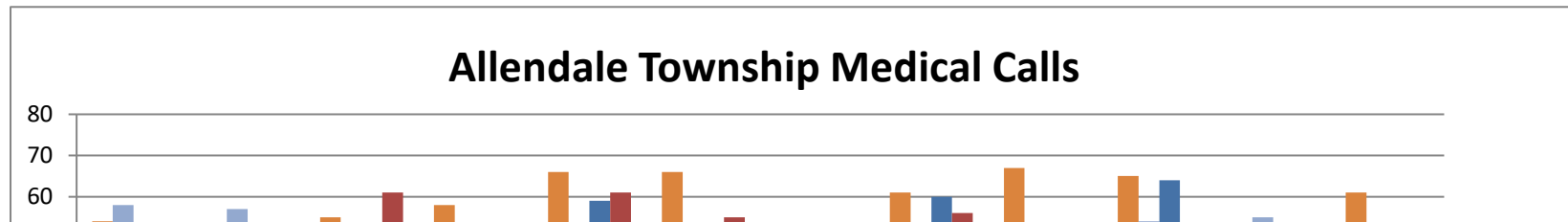
	January	February	March	April	May	June	July	August	September	October	November	December
2019	62	49	32	31	20	26	29	30	30	65	70	45
2020	44	55	22	14	28	15	18	23	33	31	49	37
2021	37	29	28	27	30	35	28	31	34	43	36	43
2022	54	36	20	24	26	26	24	20	34			

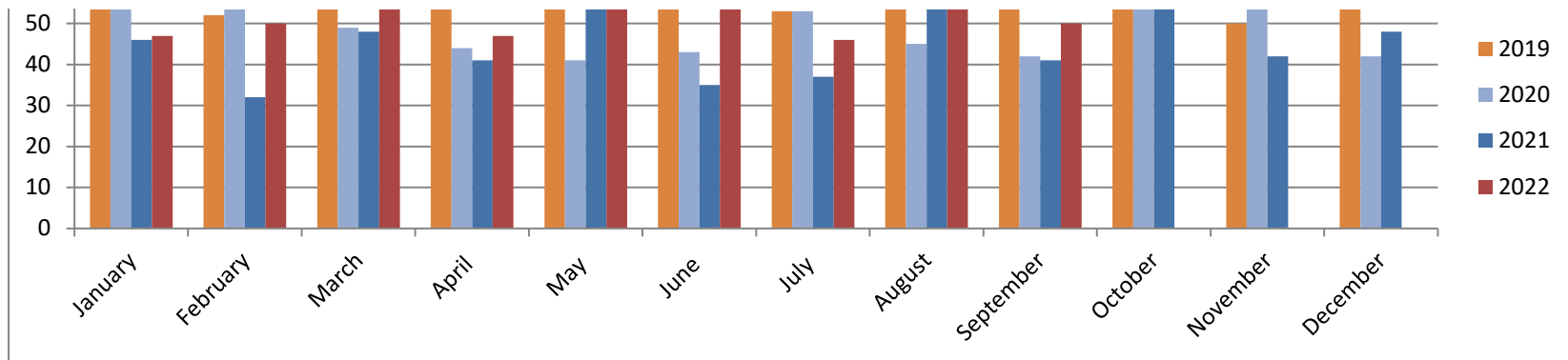
Allendale Township Traffic Crashes



Medical Calls

	January	February	March	April	May	June	July	August	September	October	November	December
2019	54	52	55	58	66	66	53	61	67	65	50	61
2020	58	57	49	44	41	43	53	45	42	54	55	42
2021	46	32	48	41	59	35	37	60	41	64	42	48
2022	47	50	61	47	61	55	46	56	50			





Calls of Interest 2022

	January	February	March	April	May	June	July	August	September	October	November	December
B & E's	1	3	3	2	4	1	6	3	3			
Larcenies	7	19	15	6	7	18	11	15	12			
Shoplifting	0	1	0	0	4	1	1	1	2			
Mental	7	6	5	15	10	15	9	6	11			
Civil	11	11	8	12	5	8	11	14	10			
Assaults	5	5	3	5	3	4	4	2	7			
Domestic	26	13	17	20	21	25	25	18	27			
Animal	8	16	14	18	30	28	24	15	24			
Alarms	9	6	7	5	7	8	12	3	8			
Traffic	19	33	35	34	40	39	31	31	41			
Narcotics	2	0	3	1	0	1	2	3	2			
Weapons	0	1	4	7	3	4	2	2	1			

Calls of Interest 2021

	January	February	March	April	May	June	July	August	September	October	November	December
B & E's	7	4	1	9	4	1	5	6	5	9	5	2

Larcenies	8	6	6	9	12	8	7	12	18	13	10	12
Shoplifting	0	1	1	1	0	2	0	1	1	0	1	0
Mental	6	2	11	5	9	11	13	12	7	13	11	12
Civil	6	11	8	8	6	12	10	9	9	11	2	8
Assaults	4	6	3	1	3	4	6	2	4	5	2	4
Domestic	28	22	26	15	27	31	23	14	29	23	17	26
Animal	18	18	15	14	10	18	17	19	16	13	9	18
Alarms	4	7	9	8	6	7	10	8	5	13	9	15
Traffic	26	34	38	41	48	37	32	37	35	41	32	45
Narcotics	3	2	3	1	2	8	2	3	6	3	5	1

Allendale

CHARTER TOWNSHIP

"Where community is more than just a concept!"

October 18, 2022

Township Board of Trustees:

Natasha Shepard began working at the Township in May of 2021. She currently works as an Administrative Assistant and is the first point of contact when people visit the Township Hall. She is also the first person most people speak with when they call on the phone. Tasha consistently shows amazing customer service that reflects well on the Township and all of us.

Over the last year and a half Tasha has grown, demonstrated a great work ethic, and shown her ability to work in multiple areas of the organization. She clearly has a bright future at the Township, and I have been working with the Clerk and Human Resources to define a path for her to continue to grow and take on additional responsibilities.

We have a great opportunity for Tasha to transition into working in our Lifelong Learners program with Director Kathy Hanes. Although Kathy is not retiring right now, we do know that Kathy has plans to retire in the future. We have a need to start a transition and bring a new director up to speed. With her personality, work ethic and skill set, Tasha is a great fit to move into this role.

The plan is to have Tasha begin assisting Kathy in the Lifelong Learners program. Tasha will assist over the next year, then in 2024 Tasha will take the lead role and Kathy will assist. With the added responsibilities Tasha's hourly pay rate will increase to \$19.01, which is the top of her current A2 wage range. Given the time of year, Tasha's 2022 year-end review process will not encompass a wage adjustment, as this promotion satisfies that segment of the annual review process. At the end of 2023 we will evaluate Tasha's performance, move her into the A3 wage range, and adjust her 2024 compensation accordingly.

During 2023 Tasha will continue to work at the front desk as she learns her new role. Realizing that the new responsibilities take away from Tasha's time at the front desk, Kathy will be spending some of her working hours filling that void.

I'm excited to transition Tasha into this new role. She is a valuable member of our team and has earned this promotion. Please be sure to congratulate Tasha when you see her.

Regards,

Adam Elenbaas

Adam Elenbaas
Township Supervisor

6676 Lake Michigan Drive | P.O. Box 539 | Allendale MI 49401
Phone: 616-895-6295 Fax: 616-895-6670 or 616-895-6330
www.allendale-twp.org

October 10, 2022

Allendale Township
Adam Elenbaas, Township Supervisor
6676 Lake Michigan Drive
PO Box 539
Allendale, MI 49401

Re: Springfield North – Phase 1
Final Preliminary Plat

Dear Adam,

On behalf of our client, Biltmore LLC, we are submitting the following items as required for securing final preliminary plat approval.

- PDF copy of the Final Preliminary Plat.
- Preliminary plat approval letters from Ottawa County Road Commission, Ottawa County Water Resources Commission and the Ottawa County Plat Board.

Having supplied the letters referenced above, preliminary plat approval has been secured from all applicable agencies.

Also enclosed is a copy of the permit from EGLE for any activity that is proposed within regulated areas.

If you have any other questions or need anything more to process this request, please contact me.

Sincerely,



Don De Groot, P.E.

cc: Jody Hanse, Clerk

From: Alvarado, Mercedes (EGLE)
Sent: 8/30/2022 2:53:56 PM
To: "Matt MacGregor" <mmacgregor@barr.com>; "mkoster2020@gmail.com" <mkoster2020@gmail.com>
Cc: "Broadwater, Bonnie (EGLE)" <BroadwaterB@michigan.gov>; "clerk@allendale-twp.org" <clerk@allendale-twp.org>; "jsbush" <jsbush@miottawa.org>; "waterresourcescommissioner@miottawa.org" <waterresourcescommissioner@miottawa.org>; "jbraxmaier@miottawa.org" <jbraxmaier@miottawa.org>
Subject: WRP034372 v1.0 Permit and Plans
Attachments: Permit and Plans.pdf

Attached you will find a copy of the Permit and Plans issued for a project located at 70-10460 56th Avenue-Allendale. Please retain the attached documents for your records. Once the project is completed, please have the applicant contact Bonnie Broadwater at 616-591-8163 or BroadwaterB@michigan.gov, stating everything is completed and include any required photos.

Mercedes (Mercy) Alvarado

Mercedes (Mercy) Alvarado, Secretary
Grand Rapids District Office (GRDO)
Water Resources Division (WRD)

Michigan Department of Environment, Great Lakes, and Energy (EGLE)
616-333-9957 alvaradom3@michigan.gov
Follow Us | [Michigan.gov/EGLE](https://michigan.gov/EGLE)

****Due to the COVID-19 crisis, I will be teleworking for the foreseeable future and will not be available for in person consultations at the Grand Rapids District Office.****



EGLE-WRD
WRP034372 v1.0
Approved
Issued On:08/30/2022
Expires On:08/30/2027

ATTACHMENT NAME:

Permit and Plans.pdf

ATTACHMENT TYPE:

Adobe Portable Document Format (PDF) compound image



NOTICE OF AUTHORIZATION

Permit Number: WRP034372 v. 1
Site Name: 70-10460 56th Avenue-Allendale

Date Issued: August 30, 2022
Expiration Date: August 30, 2027

The Michigan Department of Environment, Great Lakes, and Energy (EGLE), Water Resources Division, P.O. Box 30458, Lansing, Michigan 48909-7958, under provisions of the Natural Resources and Environmental Protection Act, 1994 PA 451, as amended; specifically:

- ☒ Part 301, Inland Lakes and Streams.
- ☒ Part 303, Wetlands Protection.

Authorized activity:

Dredge 84,700 cubic yards of material to create a 3.5-acre pond in upland. Permanently impact 0.92 acres of emergent wetland and 0.02-acres of scrub shrub wetland as follows: Install a temporary stream crossing at Allendale No 1. County Drain with impacts to 0.02 acres of emergent wetland and 60 linear feet of stream by installing a 4 foot diameter, 40 foot long culvert below the Ordinary High Water Mark (OHWM) of the stream, placing 50 cubic yards of fill over the culvert and 8 cubic yards of rip rap at the waterward ends of the culvert. Construct a drain dry detention basin impacting a total of 0.35 acres of wetland with 450 cubic yard wetland dredge, a 120 cubic yard wetland fill for the berm, and an outlet control structure with 65 cubic yards of fill and 10 cubic yards of rip rap in wetland at the outlet to Allendale No 1. County Drain. Place 4435 cubic yards of fill within 0.56 acres of wetland with 80 linear feet of 18-inch diameter storm sewer main, 80 linear feet of 8-inch diameter sanitary sewer main, and 70 linear feet of 8-inch diameter watermain to be installed within the footprint of the roadway fill. All work shall be completed in accordance with the attached plans and the terms and conditions of this permit.

To be conducted at property located in: Ottawa County, Waterbody: Allendale No. 1 County Drain Section 25, Town 07N, Range 14W, Allendale Township

Permittee:
Merwyn Koster, Biltmore LLC
6410 Lake Michigan Drive
Allendale, MI 49401

Bonnie Broadwater
Grand Rapids District Office
Water Resources Division
616-591-8163

This notice must be displayed at the site of work.
Laminating this notice or utilizing sheet protectors is recommended.
Please refer to the above permit number with any questions or concerns.

EGLE-WRD
WRP034372 v1.0
Approved
Issued On:08/30/2022
Expires On:08/30/2027



**MICHIGAN DEPARTMENT OF ENVIRONMENT, GREAT LAKES, AND ENERGY
WATER RESOURCES DIVISION
PERMIT**

Issued To:

**Merwyn Koster, Biltmore LLC
6410 Lake Michigan Drive
Allendale, MI 49401**

**Permit No: WRP034372 v.1
Submission No.: HPF-W9EB-JZRWD
Site Name: 70-10460 56th Avenue-Allendale
Issued: August 30, 2022
Revised:
Expires: August 30, 2027**

This permit is being issued by the Michigan Department of Environment, Great Lakes, and Energy (EGLE), Water Resources Division, under the provisions of the Natural Resources and Environmental Protection Act, 1994 PA 451, as amended (NREPA); specifically:

☒ **Part 301, Inland Lakes and Streams** ☒ **Part 303, Wetlands Protection**

EGLE certifies that the activities authorized under this permit are in compliance with the State Coastal Zone Management Program and certifies without conditions under the Federal Clean Water Act, Section 401 that the discharge from the activities authorized under this permit will comply with Michigan's water quality requirements in Part 31, Water Resources Protection, of the NREPA and associated administrative rules, where applicable.

Permission is hereby granted, based on permittee assurance of adherence to State of Michigan requirements and permit conditions, to:

Authorized Activity:

Dredge 84,700 cubic yards of material to create a 3.5-acre pond in upland. Permanently impact 0.92 acres of emergent wetland and 0.02-acres of scrub shrub wetland as follows: Install a temporary stream crossing at Allendale No 1. County Drain with impacts to 0.02 acres of emergent wetland and 60 linear feet of stream by installing a 4 foot diameter, 40 foot long culvert below the Ordinary High Water Mark (OHWM) of the stream, placing 50 cubic yards of fill over the culvert and 8 cubic yards of rip rap at the waterward ends of the culvert. Construct a drain dry detention basin impacting a total of 0.35 acres of wetland with 450 cubic yard wetland dredge, a 120 cubic yard wetland fill for the berm, and an outlet control structure with 65 cubic yards of fill and 10 cubic yards of rip rap in wetland at the outlet to Allendale No 1. County Drain. Place 4435 cubic yards of fill within 0.56 acres of wetland with 80 linear feet of 18-inch diameter storm sewer main, 80 linear feet of 8-inch diameter sanitary sewer main, and 70 linear feet of 8-inch diameter watermain to be installed within the footprint of the roadway fill. All work shall be completed in accordance with the attached plans and the terms and conditions of this permit.

**EGLE-WRD
WRP034372 v1.0
Approved
Issued On:08/30/2022
Expires On:08/30/2027**

Waterbody Affected: Allendale No. 1 County Drain
Property Location: Ottawa County, Allendale,
Town/Range/Section 07N/14W/25,
Property Tax No. 70-09-25-300-060 & 70-09-25-300-050

Authority granted by this permit is subject to the following limitations:

- A. Initiation of any work on the permitted project confirms the permittee's acceptance and agreement to comply with all terms and conditions of this permit.
- B. The permittee, in exercising the authority granted by this permit, shall not cause unlawful pollution as defined by Part 31 of the NREPA.
- C. This permit shall be kept at the site of the work and available for inspection at all times during the duration of the project or until its date of expiration.
- D. All work shall be completed in accordance with the approved plans and specifications submitted with the application and/or plans and specifications attached to this permit.
- E. No attempt shall be made by the permittee to forbid the full and free use by the public of public waters at or adjacent to the structure or work approved.
- F. It is made a requirement of this permit that the permittee give notice to public utilities in accordance with 2013 PA 174 (Act 174) and comply with each of the requirements of Act 174.
- G. This permit does not convey property rights in either real estate or material, nor does it authorize any injury to private property or invasion of public or private rights, nor does it waive the necessity of seeking federal assent, all local permits, or complying with other state statutes.
- H. This permit does not prejudice or limit the right of a riparian owner or other person to institute proceedings in any circuit court of this state when necessary to protect his rights.
- I. Permittee shall notify EGLE within one week after the completion of the activity authorized by this permit.
- J. This permit shall not be assigned or transferred without the written approval of EGLE.
- K. Failure to comply with conditions of this permit may subject the permittee to revocation of permit and criminal and/or civil action as cited by the specific state act, federal act, and/or rule under which this permit is granted.
- L. All dredged or excavated materials shall be disposed of in an upland site (outside of floodplains, unless exempt under Part 31 of the NREPA, and wetlands).
- M. In issuing this permit, EGLE has relied on the information and data that the permittee has provided in connection with the submitted application for permit. If, subsequent to the issuance of a permit, such information and data prove to be false, incomplete, or inaccurate, EGLE may modify, revoke, or suspend the permit, in whole or in part, in accordance with the new information.
- N. The permittee shall indemnify and hold harmless the State of Michigan and its departments, agencies, officials, employees, agents, and representatives for any and all claims or causes of action arising from acts or omissions of the permittee, or employees, agents, or representative of the permittee, undertaken in connection with this permit. The permittee's obligation to indemnify the State of Michigan applies only if the state: (1) provides the permittee or its designated representative written notice of the claim or cause of action within 30 days after it is received by the state, and (2) consents to the permittee's participation in the proceeding on the claim or cause of action. It does not apply to contested case proceedings under the Administrative Procedures Act, 1969 PA 306, as amended, challenging the permit. This permit shall not be construed as an indemnity by the State of Michigan for the benefit of the permittee or any other person.

- O. Noncompliance with these terms and conditions and/or the initiation of other regulated activities not specifically authorized shall be cause for the modification, suspension, or revocation of this permit, in whole or in part. Further, EGLE may initiate criminal and/or civil proceedings as may be deemed necessary to correct project deficiencies, protect natural resource values, and secure compliance with statutes.
- P. If any change or deviation from the permitted activity becomes necessary, the permittee shall request, in writing, a revision of the permitted activity from EGLE. Such revision request shall include complete documentation supporting the modification and revised plans detailing the proposed modification. Proposed modifications must be approved, in writing, by EGLE prior to being implemented.
- Q. This permit may be transferred to another person upon written approval of EGLE. The permittee must submit a written request to EGLE to transfer the permit to the new owner. The new owner must also submit a written request to EGLE to accept transfer. The new owner must agree, in writing, to accept all conditions of the permit. A single letter signed by both parties that includes all the above information may be provided to EGLE. EGLE will review the request and, if approved, will provide written notification to the new owner.
- R. Prior to initiating permitted construction, the permittee is required to provide a copy of the permit to the contractor(s) for review. The property owner, contractor(s), and any agent involved in exercising the permit are held responsible to ensure that the project is constructed in accordance with all drawings and specifications. The contractor is required to provide a copy of the permit to all subcontractors doing work authorized by the permit.
- S. Construction must be undertaken and completed during the dry period of the wetland. If the area does not dry out, construction shall be done on equipment mats to prevent compaction of the soil.
- T. Authority granted by this permit does not waive permit requirements under Part 91, Soil Erosion and Sedimentation Control, of the NREPA, or the need to acquire applicable permits from the County Enforcing Agent (CEA).
- U. Authority granted by this permit does not waive permit requirements under the authority of Part 305, Natural Rivers, of the NREPA. A Natural Rivers Zoning Permit may be required for construction, land alteration, streambank stabilization, or vegetation removal along or near a natural river.
- V. The permittee is cautioned that grade changes resulting in increased runoff onto adjacent property is subject to civil damage litigation.
- W. Unless specifically stated in this permit, construction pads, haul roads, temporary structures, or other structural appurtenances to be placed in a wetland or on bottomland of the water body are not authorized and shall not be constructed unless authorized by a separate permit or permit revision granted in accordance with the applicable law.
- X. For projects with potential impacts to fish spawning or migration, no work shall occur within fish spawning or migration timelines (i.e., windows) unless otherwise approved in writing by the Michigan Department of Natural Resources, Fisheries Division.
- Y. Work to be done under authority of this permit is further subject to the following special instructions and specifications:
1. Authority granted by this permit does not waive permit or program requirements under Part 91 of the NREPA or the need to acquire applicable permits from the CEA. To locate the Soil Erosion Program Administrator for your county, visit <https://www.michigan.gov/egle/about/organization/water-resources/soil-erosion/sesc-overview> and select "Soil Erosion and Sedimentation Control Agencies".

2. The authority to conduct the activity as authorized by this permit is granted solely under the provisions of the governing act as identified above. This permit does not convey, provide, or otherwise imply approval of any other governing act, ordinance, or regulation, nor does it waive the permittee's obligation to acquire any local, county, state, or federal approval or authorization necessary to conduct the activity.
3. No fill, excess soil, or other material shall be placed in any wetland, floodplain, or surface water area not specifically authorized by this permit, its plans, and specifications.
4. This permit does not authorize or sanction work that has been completed in violation of applicable federal, state, or local statutes.
5. The permit placard shall be kept posted at the work site in a prominent location at all times for the duration of the project or until permit expiration.
6. This permit is being issued for the maximum time allowed and no extensions of this permit will be granted. Initiation of the construction work authorized by this permit indicates the permittee's acceptance of this condition. The permit, when signed by EGLE, will be for a five-year period beginning on the date of issuance. If the project is not completed by the expiration date, a new permit must be sought.
7. The permittee shall, as a primary condition of this permit, mitigate the loss of .94 acres of wetland, consisting of emergent (0.92 acres), and scrub/shrub (0.02 acres) wetland by acquiring the following credits from the Buck Creek Wetland Mitigation Bank: 1.37 emergent acres, and 0.03 scrub/shrub acres and other acres. The permittee shall submit documentation of credit acquisition to EGLE prior to signature of this permit by EGLE.
8. Prior to the start of construction, all adjacent non-work wetland areas shall be protected by properly trenched sedimentation barrier to prevent sediment from entering the wetland. Orange construction fencing shall be installed as needed to prohibit construction personnel and equipment from entering or performing work in these areas. Fence shall be maintained daily throughout the construction process. Upon project completion, the accumulated materials shall be removed and disposed of at an upland site, the sedimentation barrier shall then be removed in its entirety and the area restored to its original configuration and cover.
9. All raw areas in uplands resulting from the permitted construction activity shall be effectively stabilized with sod and/or seed and mulch (or other technology specified by this permit or project plans) in a sufficient quantity and manner to prevent erosion and any potential siltation to surface waters or wetlands. Temporary stabilization measures shall be installed before or upon commencement of the permitted activity and shall be maintained until permanent measures are in place. Permanent measures shall be in place within five (5) days of achieving final grade.
10. No connection of the pond to the stream is authorized by this permit.
11. The structure shall span the bankfull width of the stream
12. This permit is for one installation of a temporary culvert stream crossing. The structure may not be removed and reinstalled at a later date, unless authorized under another permit.
13. The structure shall be removed immediately upon completion of the project activity or by expiration date of the permit, whichever is earlier. The area shall be restored to prior condition and configuration upon removal of the temporary structure.
14. All riprap shall be properly sized and graded, and shall consist of natural field stone or rock (free of paint, soil or other fines, asphalt, soluble chemicals, or organic material). Broken concrete is not allowed.

Upon Signing by the permittee named herein, this permit must be returned to EGLE, Water Resources Division, 350 Ottawa Avenue NW Unit 10, Grand Rapids, MI 49503-2341 for final execution. This permit shall become effective on the date of the EGLE representative's signature.

Permittee hereby accepts and agrees to comply with the terms and conditions of this permit.


Permittee

8/30/2022
Date

Merwyn G. Koster Member Biltmore LLC
Printed Name and Title of Permittee

Issued By:



Bonnie Broadwater
Grand Rapids District Office
Water Resources Division
616-591-8163

THIS PERMIT MUST BE SIGNED BY THE PERMITTEE TO BE VALID.

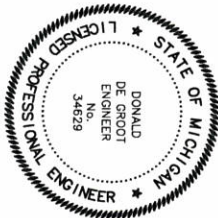
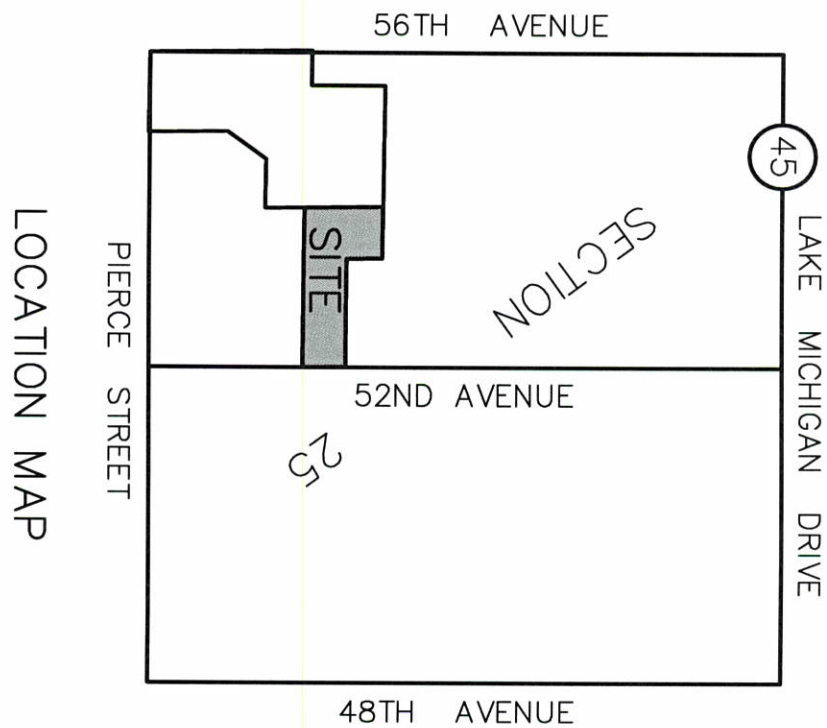
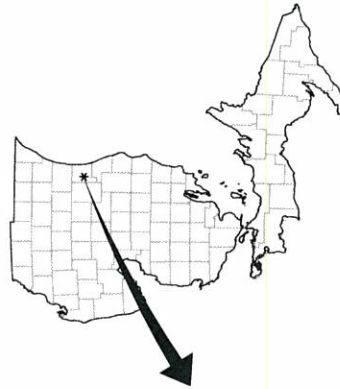
I hereby assure that I have read, am familiar with, and agree to adhere to the terms and conditions of this permit.



Permittee Signature

8/30/2022
Date

cc: Allendale Township Clerk
Ottawa County Water Resources Commissioner
Ottawa County CEA
Barr Engineering, Agent



SCALE: 1"=1000'±



05/16/22 REV. WETLANDS, ADD XSEC E1
04/14/22 UPDATED WETLAND BOUNDARIES B1/B2
03/08/22 ADD POND XSEC
03/01/22 REVISED

EGLE PERMIT DRAWING – SITE LOCATION MAP
10460 56TH AVENUE & 10681 52ND AVENUE

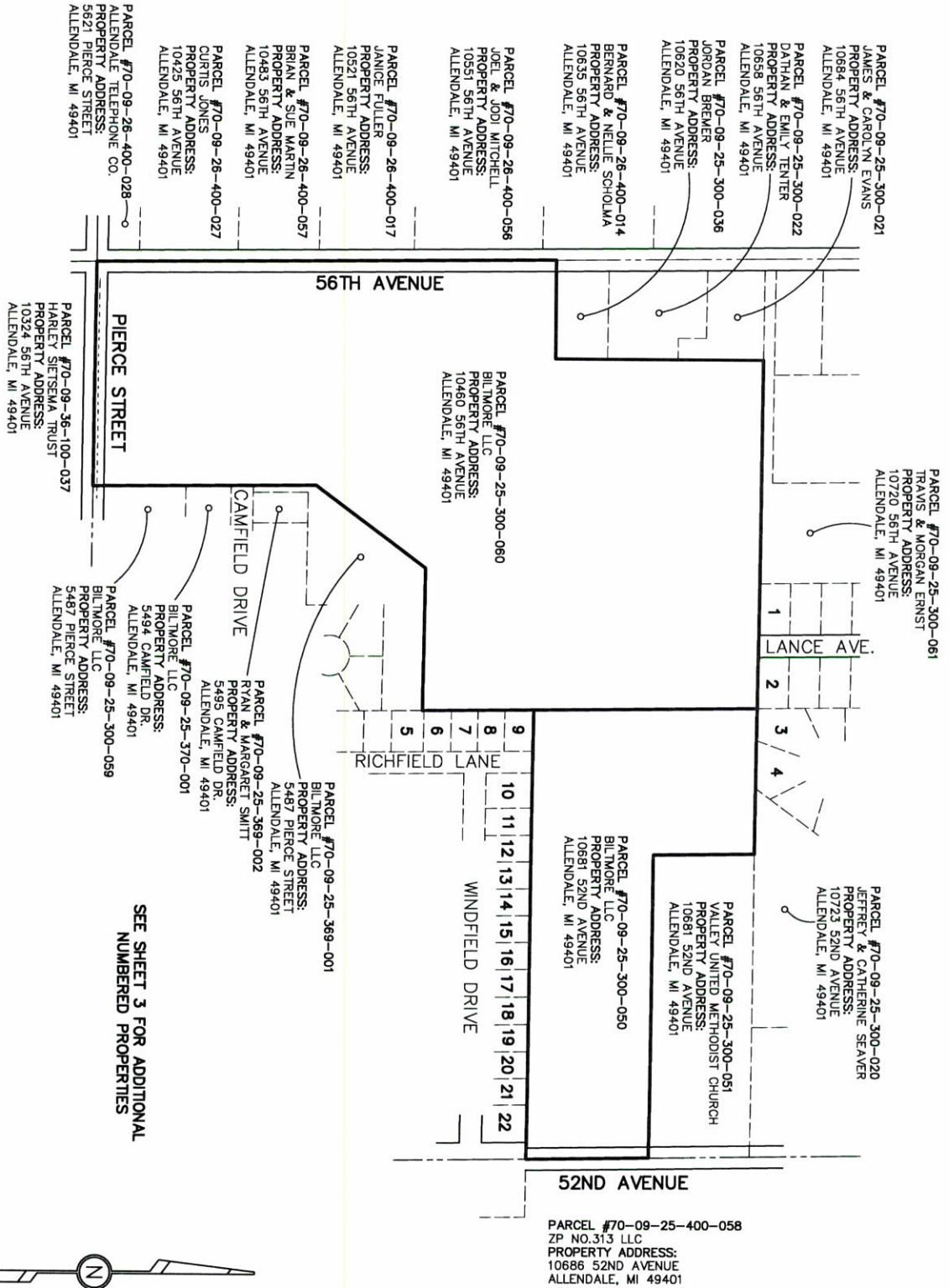
FOR: BILTMORE LLC
ATTN: MERWYN KOSTER
6410 LAKE MICHIGAN DRIVE
ALLENDALE, MI 49401
IN: PART OF SECTION 25, T7N, R14W,
ALLENDALE TOWNSHIP, OTTAWA COUNTY, MICHIGAN

Drawn by: JDR
Approved by: DDG
File No: 201894E
Sheet 1 of 8
Date: 12/27/2021



EGLE-WRP
WRP034372 v1.0

Approved
Issued On: 08/30/2022
Expires On: 08/30/2027



SCALE: 1"=300'



SEE SHEET 3 FOR ADDITIONAL
NUMBERED PROPERTIES

05/16/22 REV. WETLANDS, ADD XSEC E1
04/14/22 UPDATED WETLAND BOUNDARIES B1/B2
03/08/22 ADD POND XSEC
03/01/22 REVISED

EGLE PERMIT DRAWING — OVERALL BOUNDARY 10460 56TH AVENUE & 10681 52ND AVENUE

FOR: BILTMORE LLC
ATTN: MERWYN KOSTER
6410 LAKE MICHIGAN DRIVE
ALLENTALE, MI 49401

IN: PART OF SECTION 25, T7N, R14W,
ALLENTALE TOWNSHIP, OTTAWA COUNTY, MICHIGAN

Drawn by: JDR
Approved by: DDG
File No: 201894E
Sheet 2 of 8
Date: 12/27/2021

excel engineering, inc.
planners • engineers • surveyors
5252 Clyde Park, S.W. • Grand Rapids, MI 49509
Phone: (616) 531-3560 Fax: (616) 531-2121
www.excelengineering.com

**EGLE-WRD
WRP034372 v1.0**

Approved
Issued On: 08/30/2022
Expires On: 08/30/2027

- 1 PARCEL #70-09-25-306-006
SCHOUT BUILDERS, INC.
PROPERTY ADDRESS:
10715 LANCE AVENUE
ALLENDALE, MI 49401
- 2 PARCEL #70-09-25-307-006
AUKEMAN DEVELOPMENT
PROPERTY ADDRESS:
10718 LANCE AVENUE
ALLENDALE, MI 49401
- 3 PARCEL #70-09-25-326-010
RANDALL & TAMMY WALKER
PROPERTY ADDRESS:
10727 DOUGLAS DRIVE
ALLENDALE, MI 49401
- 4 PARCEL #70-09-25-326-011
TIMOTHY & MICHELLE FORD
PROPERTY ADDRESS:
10726 DOUGLAS DRIVE
ALLENDALE, MI 49401
- 5 PARCEL #70-09-25-376-005
KYLE RYTLEWSKI
PROPERTY ADDRESS:
10557 RICHFIELD LANE
ALLENDALE, MI 49401
- 6 PARCEL #70-09-25-376-004
JOHN GARRISON
PROPERTY ADDRESS:
10559 RICHFIELD LANE
ALLENDALE, MI 49401
- 7 PARCEL #70-09-25-376-003
KRISTA VISSER
PROPERTY ADDRESS:
10563 RICHFIELD LANE
ALLENDALE, MI 49401
- 8 PARCEL #70-09-25-376-002
BERNARD & CRYSTAL OERTLIN
PROPERTY ADDRESS:
10569 RICHFIELD LANE
ALLENDALE, MI 49401
- 9 PARCEL #70-09-25-376-001
STYVE PERRON & ROBERT OCONNER
PROPERTY ADDRESS:
10587 RICHFIELD LANE
ALLENDALE, MI 49401
- 10 PARCEL #70-09-25-385-001
MARC JOHNSTON & GEORGIA VANSOLKEMA
PROPERTY ADDRESS:
5363 WINDFIELD DRIVE
ALLENDALE, MI 49401
- 11 PARCEL #70-09-25-385-002
NICHOLAS YORK
PROPERTY ADDRESS:
5351 WINDFIELD DRIVE
ALLENDALE, MI 49401
- 12 PARCEL #70-09-25-385-003
JONATHAN & BRITTANY VANDERWALL
PROPERTY ADDRESS:
5339 WINDFIELD DRIVE
ALLENDALE, MI 49401
- 13 PARCEL #70-09-25-385-004
THOMAS & GERALDINE OLEKINSKI
PROPERTY ADDRESS:
5327 WINDFIELD DRIVE
ALLENDALE, MI 49401
- 14 PARCEL #70-09-25-385-005
MIGUEL MORALEZ
PROPERTY ADDRESS:
5315 WINDFIELD DRIVE
ALLENDALE, MI 49401
- 15 PARCEL #70-09-25-385-006
JACOB & SAMANTHA WESTHOUSE
PROPERTY ADDRESS:
5303 WINDFIELD DRIVE
ALLENDALE, MI 49401
- 16 PARCEL #70-09-25-385-007
CHRISTOPHER & KELSEY PELZER
PROPERTY ADDRESS:
5291 WINDFIELD DRIVE
ALLENDALE, MI 49401
- 17 PARCEL #70-09-25-385-008
DEREK MGBOLDY
PROPERTY ADDRESS:
5279 WINDFIELD DRIVE
ALLENDALE, MI 49401
- 18 PARCEL #70-09-25-385-009
KODIE & HEATHER PALMER
PROPERTY ADDRESS:
5267 WINDFIELD DRIVE
ALLENDALE, MI 49401
- 19 PARCEL #70-09-25-385-010
KORY & STACY BAUSWELL
PROPERTY ADDRESS:
5255 WINDFIELD DRIVE
ALLENDALE, MI 49401
- 20 PARCEL #70-09-25-385-011
CHRISTOPHER & REBECCA WEAVER
PROPERTY ADDRESS:
5243 WINDFIELD DRIVE
ALLENDALE, MI 49401
- 21 PARCEL #70-09-25-385-012
JOHN & KATHY ALEXANDER
PROPERTY ADDRESS:
5231 WINDFIELD DRIVE
ALLENDALE, MI 49401
- 22 PARCEL #70-09-25-385-013
ANTHONY & ROXANN FEAGANES
PROPERTY ADDRESS:
5217 WINDFIELD DRIVE
ALLENDALE, MI 49401

05/16/22 REV. WETLANDS, ADD XSEC E1
04/14/22 UPDATED WETLAND BOUNDARIES B1/B2
03/08/22 ADD POND XSEC
03/01/22 REVISED

EGLE PERMIT DRAWING - OVERALL BOUNDARY 10460 56TH AVENUE & 10681 52ND AVENUE

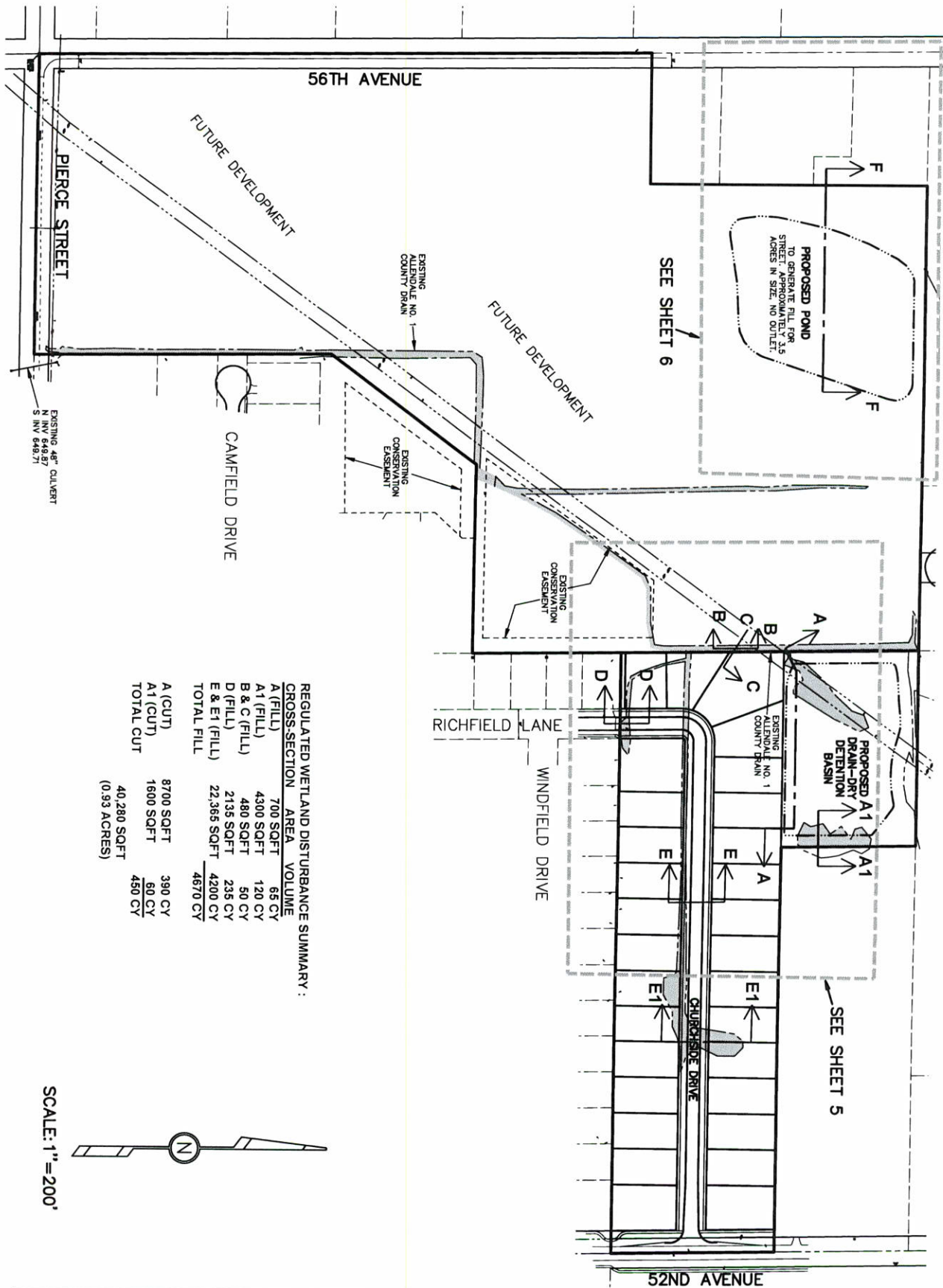
FOR: BILTMORE LLC
ATTN: MERWYN KOSTER
6410 LAKE MICHIGAN DRIVE
ALLENDALE, MI 49401
IN: PART OF SECTION 25, T7N, R14W,
ALLENDALE TOWNSHIP, OTTAWA COUNTY, MICHIGAN

Drawn by: JDR
Approved by: DDG
File No: 201894E
Sheet 3 of 8
Date: 12/27/2021



EGLE-WRD
WRP034372 v1.0

Approved
Issued On:08/30/2022
Expires On:08/30/2027



EGLE PERMIT DRAWING — OVERALL SITE PLAN
10460 56TH AVENUE & 10681 52ND AVENUE

FOR: BILTMORE LLC
 ATTN: MERWYN KOSTER
 6410 LAKE MICHIGAN DRIVE
 ALLENDALE, MI 49401
 IN: PART OF SECTION 25, T7N, R14W,
 ALLENDALE TOWNSHIP, OTTAWA COUNTY, MICHIGAN

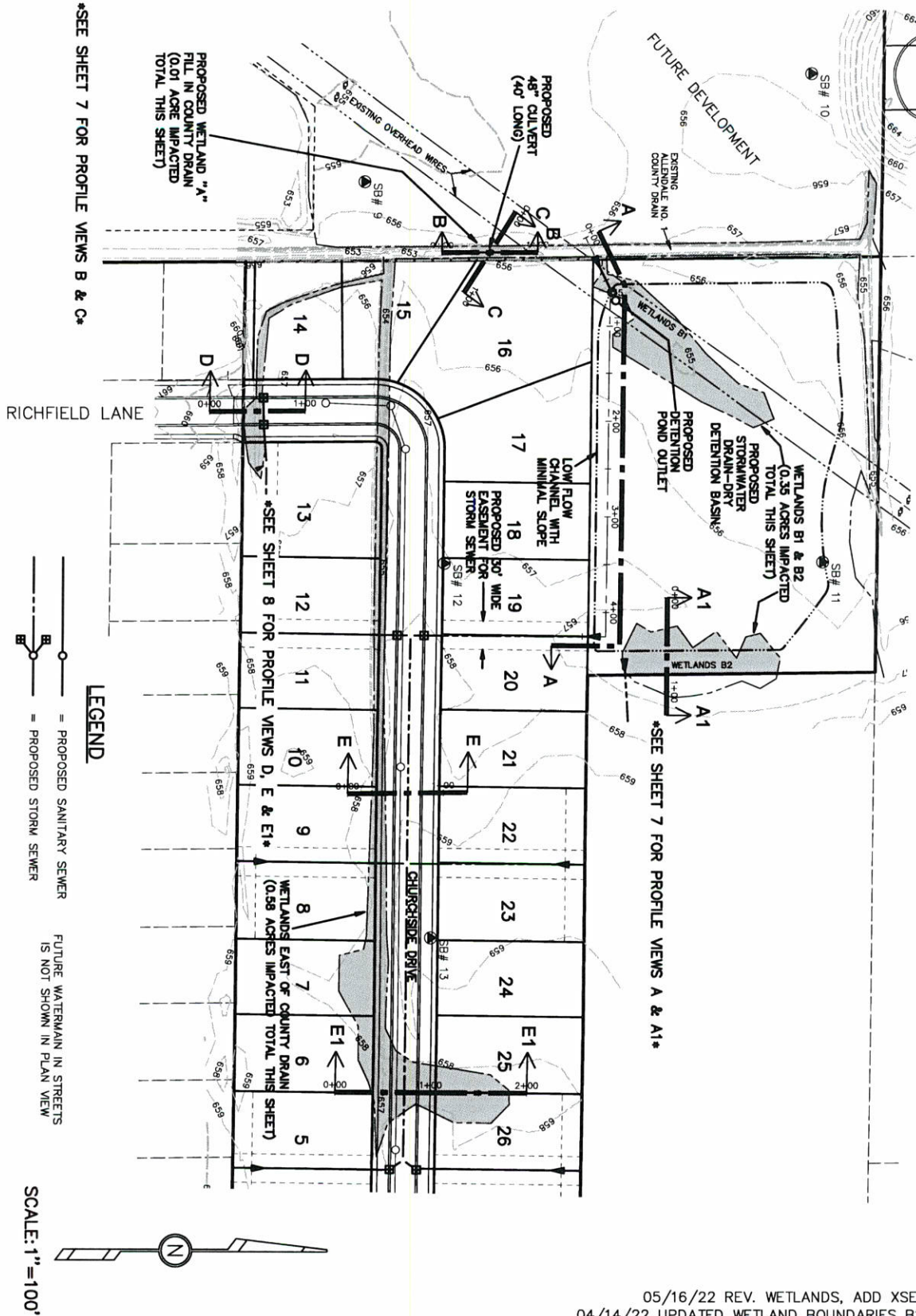
05/16/22 REV. WETLANDS, ADD XSEC E1
 04/14/22 UPDATED WETLAND BOUNDARIES B1/B2
 03/08/22 ADD POND XSEC
 03/01/22 REVISED

Drawn by: JDR
 Approved by: DDG
 File No: 201894E
 Sheet 4 of 8
 Date: 12/27/2021

excel engineering, inc.
 planners • engineers • surveyors
 5252 Clyde Park, S.W. • Grand Rapids, MI 49509
 Phone: (616) 531-3660 Fax: (616) 531-2121
 www.excelengineering.com

EGLE-WRD
WRP034372 v1.0

Approved
 Issued On: 08/30/2022
 Expires On: 08/30/2027



05/16/22 REV. WETLANDS, ADD XSEC E1
 04/14/22 UPDATED WETLAND BOUNDARIES B1/B2
 03/08/22 ADD POND XSEC
 03/01/22 REVISED

EGLE PERMIT DRAWING – PLAN VIEW – EAST
10460 56TH AVENUE & 10681 52ND AVENUE

FOR: BILTMORE LLC
 ATTN: MERWYN KOSTER
 6410 LAKE MICHIGAN DRIVE
 ALLENDALE, MI 49401

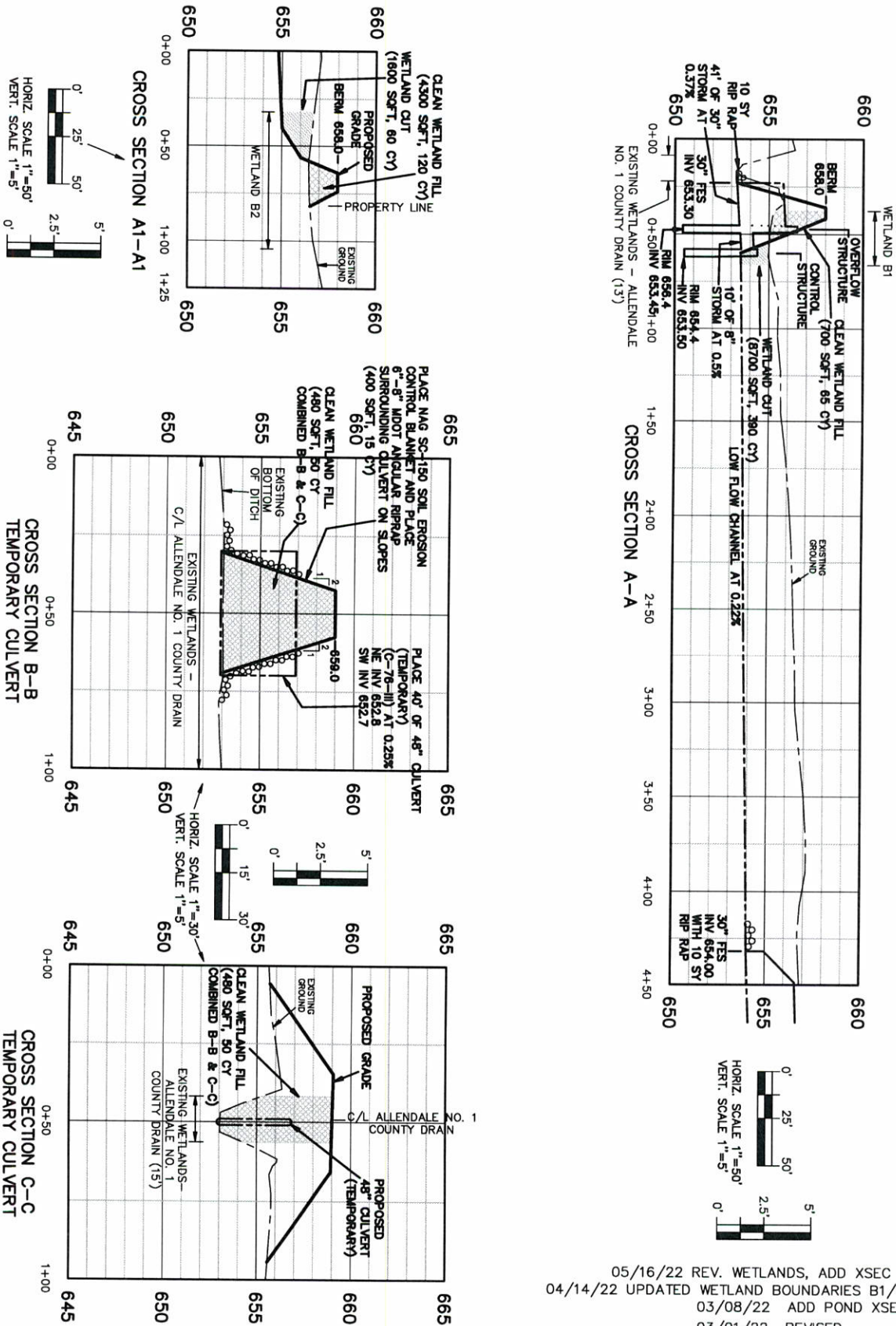
IN: PART OF SECTION 25, T7N, R14W,
 ALLENDALE TOWNSHIP, OTTAWA COUNTY, MICHIGAN

Drawn by: JDR
 Approved by: DDG
 File No: 201894E
 Sheet 5 of 8
 Date: 12/01/2021

excel engineering, inc.
 planners • engineers • surveyors
 5252 Clyde Park, S.W. • Grand Rapids, MI 49509
 Phone: (616) 531-3660 Fax: (616) 531-2121
 www.excelengineering.com

EGLE-WRD
WRP034372 v1.0

Approved
Issued On: 08/30/2022
Expires On: 08/30/2027



05/16/22 REV. WETLANDS, ADD XSEC E1
 04/14/22 UPDATED WETLAND BOUNDARIES B1/B2
 03/08/22 ADD POND XSEC
 03/01/22 REVISED

EGLE PERMIT DRAWING - CROSS SECTIONS A, A1, B & C
10460 56TH AVENUE & 10681 52ND AVENUE

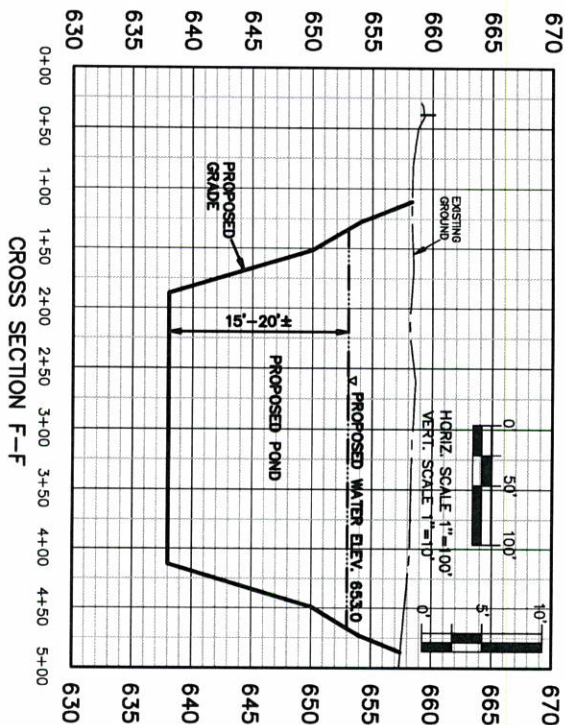
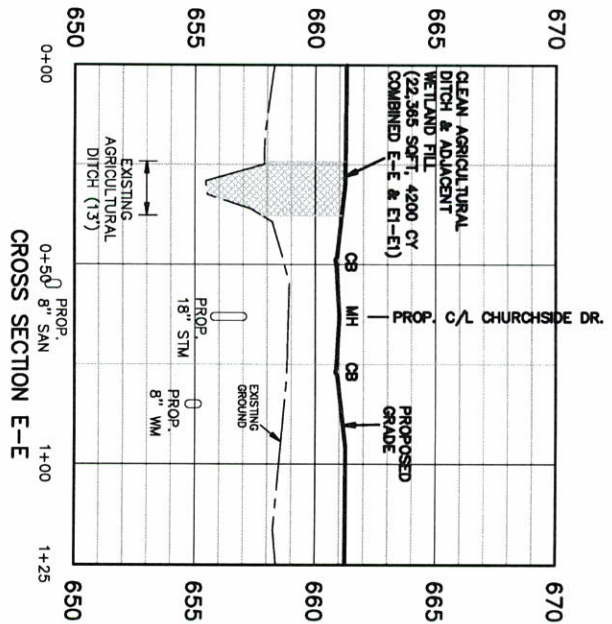
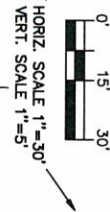
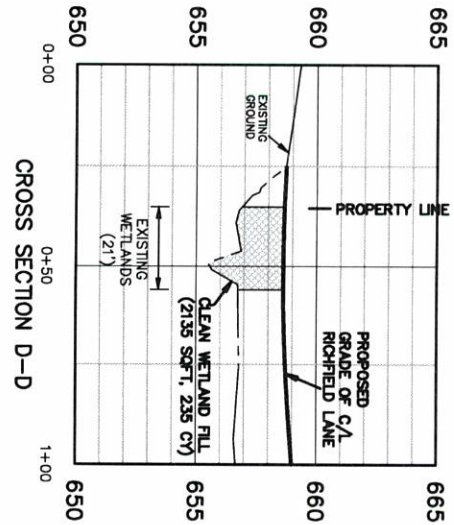
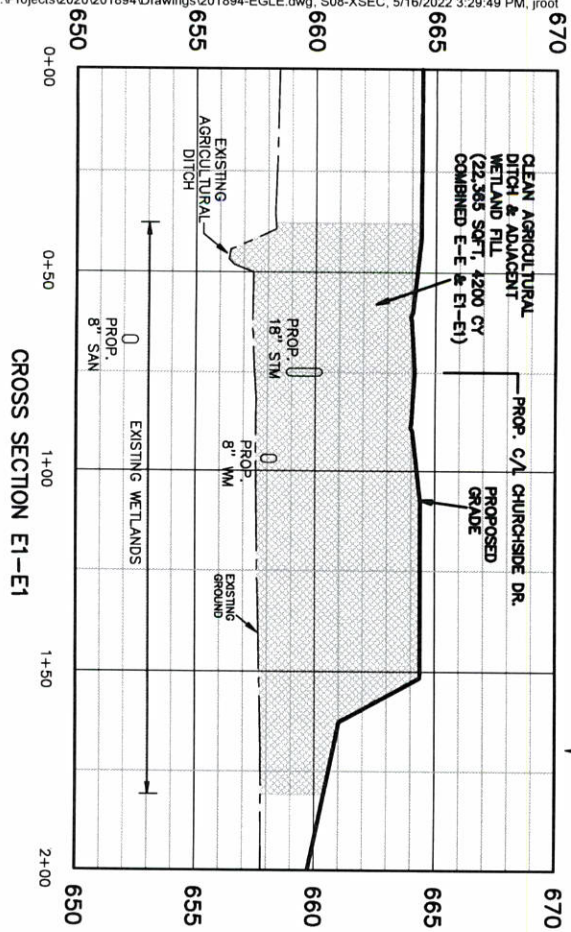
FOR: BILTMORE LLC
 ATTN: MERWYN KOSTER
 6410 LAKE MICHIGAN DRIVE
 ALLENDALE, MI 49401
 IN: PART OF SECTION 25, T7N, R14W,
 ALLENDALE TOWNSHIP, OTTAWA COUNTY, MICHIGAN

Drawn by: JDR
 Approved by: DDG
 File No: 201894
 Sheet 1 of 8
 Date: 12/27/2021

excel engineering, inc.
 planners · engineers · surveyors
 5252 Clyde Park, S.W. • Grand Rapids, MI 49509
 Phone: (616) 531-3660 Fax: (616) 531-2121
 www.excelengineering.com

EGLE-WRP
WRP034372 v1.0

Approved
 Issued On: 08/30/2022
 Expires On: 08/30/2027



05/16/22 REV. WETLANDS, ADD XSEC E1
 04/14/22 UPDATED WETLAND BOUNDARIES B1/B2
 03/08/22 ADD POND XSEC
 03/01/22 REVISED

EGLE PERMIT DRAWING – CROSS SECTIONS D, E, E1 & F 10460 56TH AVENUE & 10681 52ND AVENUE

FOR: BILTMORE LLC
 ATTN: MERWYN KOSTER
 6410 LAKE MICHIGAN DRIVE
 ALLENDALE, MI 49401

IN: PART OF SECTION 25, T7N, R14W,
 ALLENDALE TOWNSHIP, OTTAWA COUNTY, MICHIGAN

Drawn by: JDR
 Approved by: DDG
 File No: 201894E
 Sheet 8 of 8
 Date: 12/27/2021

excel engineering, inc.
 planners • engineers • surveyors
 5252 Clyde Park, S.W. • Grand Rapids, MI 49509
 Phone: (616) 531-3666 Fax: (616) 531-2121
 www.excelengineering.com

EGLE-WR0
WRP034372 v1.0

Approved
 Issued On: 08/30/2022
 Expires On: 08/30/2027



Since 1911

Ottawa County Road Commission

14110 Lakeshore Drive
Grand Haven, Michigan 49417
(616) 842-5400
permits@ottawacorc.com

April 11, 2022

Mr. Donald De Groot, P.E.
Exxel Engineering
5252 Clyde Park, S.W.
Grand Rapids, MI 49509

**RE: Preliminary Plat for Springfield North
West side of 52nd Avenue north of Pierce Street
Section 25, Allendale Charter Township**

Dear Mr. De Groot:

This letter is to inform you that at the regular meeting of the Board of County Road Commissioners (the "Board"), County of Ottawa held on April 7, 2022, the Board approved the preliminary plat, revised 04/01/22, for the above-mentioned project.

If you have any questions, please feel free to contact me at (616) 842-5400.

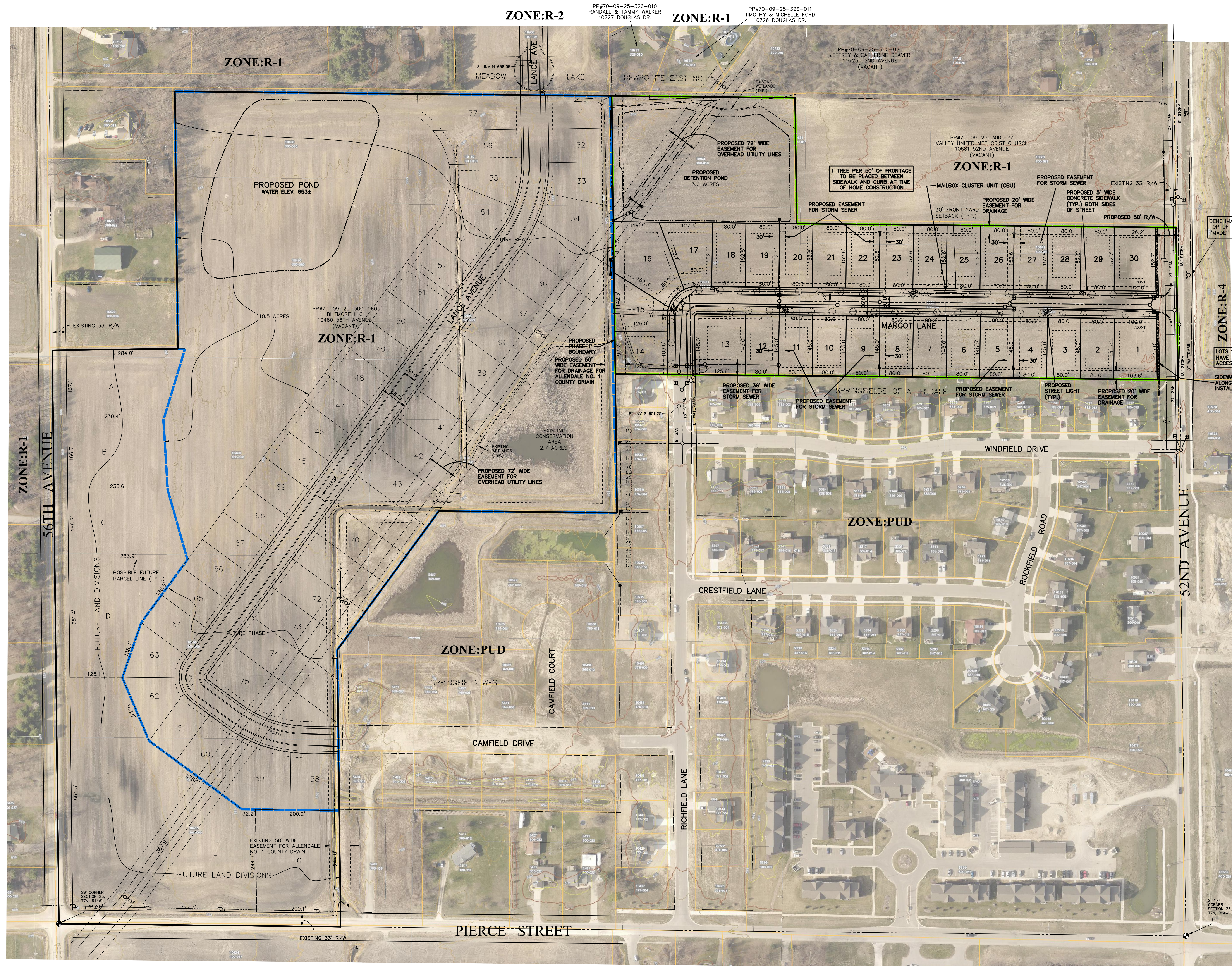
Sincerely,

A handwritten signature in blue ink, appearing to read "Jerry Kuiper".

Jerry Kuiper
Special Services Aide

CC: Joe Bush, Ottawa County Water Resources Commissioner
Jessica Pieri, Ottawa County Water Resources Commission
Adam Elenbaas, Allendale Charter Township
Kevin Yeomans, Allendale Charter Township
File





GENERAL NOTES

- LEGAL DESCRIPTION PER TAX RECORDS:
PART OF SW 1/4 BEG SW SEC COR, TH N 1368.43 FT, E 299.9 FT, N 613 FT, S 880.32M 42S E 1042.62 FT, S 0D 07M 52S E 994.9 FT, N 860.31M 32S W 671.85 FT, S 0D 03M 29S E 994.66 FT, TH N 880.30M 50S W 672.38 FT TO PT OF BEG. ALSO COM SW COR LOT 12 SPRINGFIELD WEST, TH N 880.22M 55S W 20 FT & N 0D 42M 13S W 179.35 FT TO PT OF BEG, TH N 360.11M 16S E 410.8 FT, S 890.23M 40S W TO PT N 0D 42M 13S W OF BEG, TH S 0D 42M 13S E TO BEG. SEC 25 T7N R14W.
AND
PART OF SW 1/4 COM N 0D 48M 05S W 1326.78 FT FROM S 1/4 COR, TH N 890.23M 54S W 1343.23 FT, N 0D 44M 10S W 663.17 FT, S 890.24M 24S E 437.47 FT, S 0D 48M 05S E 300 FT, S 890.24M 24S E 905 FT, TH S 0D 48M 05S E 363.38 FT TO BEG. SEC 25 T7N R14W.
- EXISTING ZONING: R-2 (MEDIUM DENSITY ONE- AND TWO-FAMILY RESIDENTIAL).
- THIS PLAT IS INTENDED FOR THE CONSTRUCTION OF SINGLE-FAMILY HOMES.
- STATISTICAL SUMMARY:

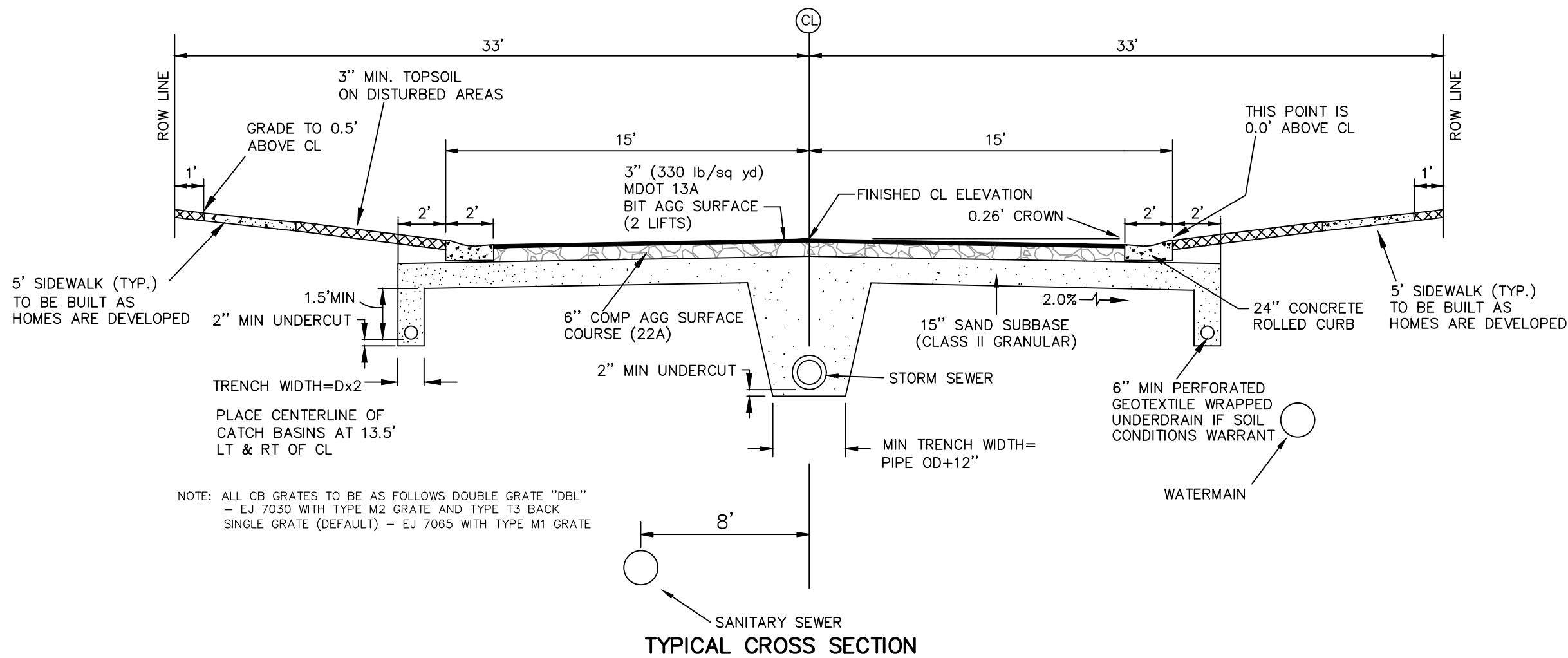
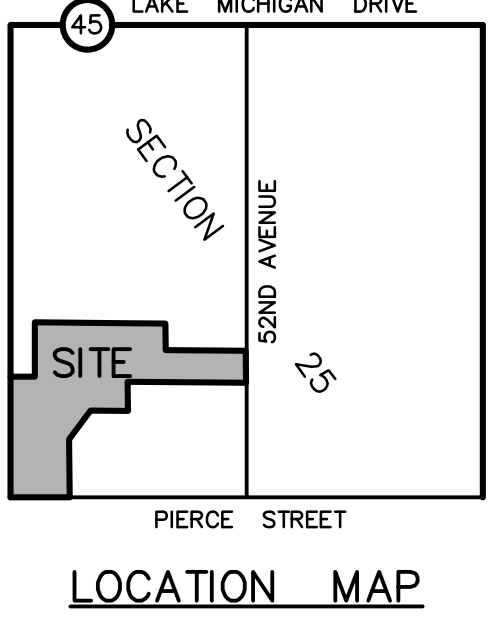
	PHASE 1	ENTIRE PLAT
NUMBER OF LOTS	30	75
TOTAL ACRES	14.2	46.3
LENGTH OF STREET	1340'	3400'
NET RESIDENTIAL AREA	8.82 ACRES	24.23 ACRES
	(384,088 SQFT)	(1,055,446 SQFT)
NET DENSITY	3.40 LOTS/AC	3.10 LOTS/AC

NOTE: DENSITY CALCULATIONS EXCLUDE FUTURE LAND DIVISION AREA.
- R-2 ZONING REQUIREMENTS:
FRONT YARD SETBACK: 30' MIN. (50' WHEN ADJACENT TO PRIMARY STREET)
SIDE YARD SETBACK: 25' TOTAL (10' MIN.)
SIDE YARD SETBACK FOR CORNER LOTS: 30' ON STREET SIDE
REAR YARD SETBACK: 25' MIN.
LOT WIDTH: 80' MIN. (100' FOR CORNER LOT)
LOT AREA: 10,000 SQ.FT. (12,000 SQ.FT. FOR CORNER LOT)
- PUBLIC UTILITIES: THE FRONT 10' OF EACH LOT WILL BE RESERVED FOR POWER AND TELEPHONE LINES (AND OTHER APPROVED UTILITIES TO SERVICE THE SITE). ALL FRANCHISE UTILITIES WILL BE UNDERGROUND.
- THIS PLAT WILL CONFORM TO THE OTTAWA COUNTY SOIL EROSION AND SEDIMENTATION CONTROL ORDINANCE AND THE NPDES PERMIT PROCESS.
- ROAD CONSTRUCTION SHALL CONFORM TO THE OTTAWA COUNTY ROAD COMMISSION STANDARDS AND BE DEDICATED AS PUBLIC STREETS.
- THIS PLAT IS NOT INFLUENCED BY A 100 YEAR FLOOD PLAIN PER FEMA MAPPING.
- SIDEWALKS TO BE INSTALLED ON EACH LOT PER TOWNSHIP SUBDIVISION ORDINANCE - ARTICLE 5, SECTION 5.3 (3)(i) AT THE TIME OF HOUSE CONSTRUCTION.
EXCEPTION: AROUND TEMPORARY TURNAROUND PER OCRC.
- STREET LIGHTS WILL BE PROVIDED PER TOWNSHIP SUBDIVISION ORDINANCE - ARTICLE 5, SECTION 5.3 (3)(i).
- STREET TREES WILL BE PROVIDED PER TOWNSHIP SUBDIVISION ORDINANCE - ARTICLE 5, SECTION 5.3 (3)(m) AT TIME OF HOME CONSTRUCTION
- A MINIMUM OF ONE (1) TREE SHALL BE PLANTED FOR EVERY FIFTY (50) FEET OF FRONTAGE ALONG EACH SIDE OF THE STREET. THERE SHALL BE A MINIMUM OF ONE TREE PER INTERIOR LOT AND AT LEAST TWO TREES SHALL BE PROVIDED FOR A CORNER LOT.
- TREES WILL BE PLANTED 25' FROM CENTERLINE AND WILL COMPLY WITH ALL TREE PLANTING REQUIREMENTS AS INDICATED IN SECTION V(L) OF THE OCRC STANDARDS FOR PUBLIC STREET CONSTRUCTION.
- EXISTING SITE IS AN ACTIVE FARM FIELD.
- NO PERMANENT SUBDIVISION SIGNAGE IS PROPOSED.
- PHASE 1 TO BE CONSTRUCTED IN 2022/2023; SUBSEQUENT PHASE(S) WILL BE CONSTRUCTED WHEN LIFT STATION BECOMES AVAILABLE.

LOT AREA

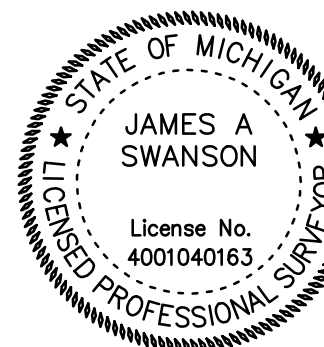
Area		Area	
Lot No.	Sq.Feet	Lot No.	Sq.Feet
1	14763	16	22889
2	11604	17	15035
3	11604	18	12165
4	11612	19	12166
5	11596	20	12167
6	11604	21	12168
7	11604	22	12169
8	11604	23	12170
9	11604	24	12171
10	11604	25	12172
11	11604	26	12173
12	11604	27	12174
13	17437	28	12175
14	11518	29	12176
15	12586	30	14938

AVERAGE LOT SIZE = 12,762 SQFT

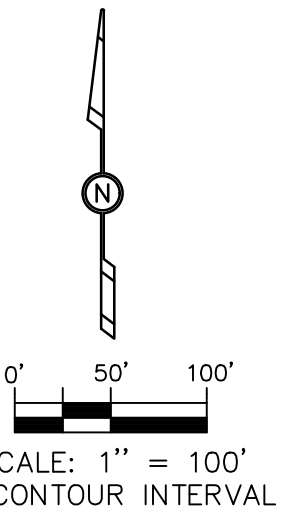


PROPOSED UTILITIES LEGEND

- REPRESENTS PROPOSED WATERMAIN
- REPRESENTS PROPOSED SAN SEWER
- REPRESENTS PROPOSED STORM SEWER



EXISTING CONTOURS AND PHOTO DERIVED FROM OTTAWA COUNTY GIS DATA DATED 2018.



FINAL PRELIMINARY PLAT
SPRINGFIELD NORTH

FOR: BILTMORE LLC
ATTN: MERWYN KOSTER
6410 LAKE MICHIGAN DRIVE
ALLEDALE, MI 49401

PART OF THE SW 1/4, SECTION 25, T7N, R14W, ALLEDALE TOWNSHIP, OTTAWA COUNTY, MICHIGAN

DATE	REVISION	BY	DATE	REVISION	BY
10/04/22	REV PER CONSTRUCTION PLANS	JSD			
04/01/22	REV PER OCRC	JSD			
03/10/22	REV PLAT NAME AND STREET NAME	JSD			
01/11/22	REV PER PLANNER EMAIL OF 1/10/22	JDR			
01/10/22	REVISED PER PLANNER COMMENTS	JDR			



5252 Clyde Park, S.W. • Grand Rapids, MI 49509
Phone: (616) 531-3860 www.excelengineering.com

PROJ. ENG.: DDG
PROJ. SURV.: JSD
FILE NO.: 201804E
DATE: 11/22/2021
SHEET 1 of 1

OTTAWA COUNTY PLAT BOARD MINUTES

March 29, 2022

March 29, 2022

The Ottawa County Plat Board met on Tuesday, March 29, 2022, at 12:15 p.m. for a regular meeting of the Ottawa County Plat Board at the Fillmore Street Complex in West Olive, MI.

The meeting was called to order by Mr. Fenske at 12:18 p.m.

Present: Ms. Price, Mr. Roebuck, Mr. Fenske (3)

Absent: none

Ms. Price moved to approve the agenda of today as presented. The motion passed.

Ms. Price moved to approve the minutes of the March 8, 2022 meeting. The motion passed.

Springfield North

The above proposed plat located in the SW ¼ of Section 25 of Allendale Township was discussed and reviewed. The preliminary plat was approved.

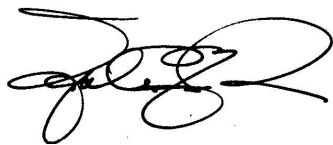
Hidden Lake West No. 2

The above proposed plat located in the NW ¼ of Section 18 of Georgetown Township was discussed and reviewed. The preliminary plat was approved.

The next meeting is scheduled for Tuesday, April 12th, 2022 at 12:15 p.m., to be held in the Clerk's Conference Room 130.

Mr. Fenske moved to adjourn the meeting at 1:06 p.m. The motion passed.

Respectfully,

A handwritten signature in black ink, appearing to read 'J. Roebuck', with a stylized flourish at the end.

Justin F. Roebuck
Ottawa County Clerk/Register of Deeds



County of Ottawa

Office of the Water Resources Commissioner

Joe Bush
Commissioner

Josiah Timmermans
Chief Deputy

12220 Fillmore Room 141 West Olive, MI 49460 Ph.(616) 994-4530 FAX (616) 994-4529 Email waterresourcescommissioner@miottawa.org

April 22, 2022

Mitch Koster
Biltmore LLC
6410 Lake Michigan Dr
Allendale, MI 49401

RE: Springfield North- **Preliminary Plat Drainage Approval**
10681 52nd
Quarter SW, Section 25, Allendale Township

Dear Mr. Koster,

Upon recommendation of our reviewing engineer, OCWRC hereby grants **Preliminary Plat Drainage Approval** for Springfield North as shown on the construction plan and stormwater calculations submitted by Don De Groot, P.E., Exxel Engineering both dated March 8, 2022, respectively.

As conditions of approval, please reference the recommendations from our reviewing engineer, Mr. Dennis Chase, P.E. in his letter dated April 11, 2022 which was previously sent to you. Those recommendations should be incorporated into the design as you move forward with your construction plan submittal.

Construction plan approval shall not be issued until OCWRC has received and reviewed acceptable plans and storm water calculations, as well as the appropriate fees for this next step in the process. Construction plan review fees shall be calculated by the developer's engineer per the current fee schedule at the time of submittal.

Final approval shall be granted only after receiving and reviewing all final documents, and payment of all applicable fees incurred.

If you have any questions, please contact me at (616) 994-4530.

Sincerely,

Joe Bush
County of Ottawa
Water Resources Commissioner

JB/jap

c: Mr. Don De Groot, P.E., Exxel Engineering



County of Ottawa

Office of the Water Resources Commissioner

Joe Bush
Commissioner

Josiah Timmermans
Chief Deputy

12220 Fillmore Room 141 West Olive, MI 49460 Ph.(616) 994-4530 FAX (616) 994-4529 Email waterresourcescommissioner@miottawa.org

Mr. Dennis Chase, P.E., LRE

Mr. John Gutierrez, P.E., OCRC

Mr. Adam Elenbaas, Supervisor of Allendale Charter Township