

Agenda for the

Allendale Charter Township Board Meeting

Monday, May 8, 2023, 6:00pm

Members Present:

Members Absent:

Guests Present:

Meeting called to Order

- Invocation given by Candy Kraker
- Pledge of Allegiance
- Approve Agenda
- Consent Agenda
 - Approval of the April 24th, 2023, Regular Board Meeting Minutes
 - Bills
 - Interim Bills
- For information
 - Minutes of the April 17, 2023, Planning Commission Meeting
 - March Fire Department Monthly Report
 - Public Utilities Department 2022 Year in Review
- Public Hearings
- Public Comments
- Guest Speakers
- Action Items
 - Resolution 2023-07: Resolution to Commence Eminent Domain Proceedings
- Discussion Items
 - Cemetery Ordinance and Fee Updates
- Public Comments
- Board Comments
- Future Agenda Items
- Adjournment

Our Wi-Fi connection may be used to access the Board Information Packet:

- Account: ACT_Guest
- Password: ACTguest
- File location:
<https://www.allendale-twp.org/index.php/agendas-and-minutes/agendas/township-board>

**PROPOSED
PROCEEDINGS OF THE ALLENDALE
TOWNSHIP BOARD OF TRUSTEES
APRIL SESSION 2nd DAY**

The Allendale Township Board of Trustees met at the Allendale Township Auditorium, located at 6676 Lake Michigan Drive, on Monday, April 24, 2023, at 6:00 p.m. and was called to order at 6:00 p.m. by Mr. Elenbaas.

Present at Roll Call: Ms. Schuitema; Ms. Hansen; Mr. Zeinstra; Ms. Kraker; and Mr. Elenbaas. (5)

Absent at Roll Call: Mr. Vander Wall (1)

Vacant Seat: One (1)

Staff and Guest Present: Bob Sullivan, Legal Counsel; Sergeant Cal Keuning, Ottawa County Sheriff's Department; and Chad Doornbos, Public Utilities Superintendent.

Mr. Elenbaas pronounced the invocation.

Mr. Elenbaas led in the Pledge of Allegiance to the Flag of the United States of America.

BOT 23-063 Mr. Zeinstra moved to approve the agenda of today with the following amendments: to add "Eminent Domain" to Discussion Items. The motion passed.

BOT 23-064 Ms. Kraker moved to approve the following Consent Resolutions:

1. To approve the Minutes of the April 10, 2023, Board of Trustees meeting as presented.
2. To approve the Minutes of the March 27, 2023, Board of Trustees closed session meeting as presented.
3. To approve the general claims in the amount of \$176,088.26 and interim payments of \$102,463.20, as presented by the summary report for April 24, 2023.

Items Received for Information

1. March Financial Report
2. Minutes of the April 3, 2023, Planning Commission Meeting.
3. March Sheriff's Department Report

Public Hearings - None

Public Comments- None

BOT 23-065 Mr. Elenbaas moved to close public comment. The motion passed.

Guest Speakers- None

Action Items

BOT 23-066 Ms. Schuitema moved to approve and authorize the Clerk and or Supervisor to sign Resolution 2023-06 as amended: Committee Appointments; a resolution approving the following committee appointments:

Downtown Development Authority Citizens Council – Term ending December 31, 2023

Mark Hatto
Donna Cargill
Mikal MacDonald
Brenda Vredevel
Gary Kleinjans
Matthew Murphy
Summer Rietsema
Steven Kushion
Pierson Roon

The motion passed.

BOT 23-067 Mr. Zeinstra moved to approve and authorize the Clerk to sign and submit the Letter of Intent to the Ottawa County Clerk/Register of Deeds office; a letter indicating that Allendale Charter Township intends to collaborate with the Ottawa County Clerk's Office for the conduct of early voting for our jurisdiction.

Discussion Items

Mr. Elenbaas and Mr. Sullivan provided an overview of Eminent Domain processes.

Public Comments -None

BOT 23-068 Mr. Elenbaas moved to close public comment. The motion passed.

Board Comments

Ms. Hansen reminded the board of the upcoming Fire Department Open House, which is scheduled for May 6, 2023, from 11:00 a.m. – 2:00 p.m. She also shared a request from a resident to upgrade signs identifying the ballfields including wayward signs throughout the park.

Mr. Elenbaas reminded the board of MTA conference that he attended last week. He highly encouraged the board members to attend the next one.

BOT 23-069 Ms. Schuitema moved to adjourn the meeting at 7:04 p.m. The motion passed.

Jody L. Hansen, Clerk
Of the Township of Allendale

Adam Elenbaas, Supervisor
Of the Township of Allendale

UNJOURNALIZED

OPEN

GL Number	GL Desc	Vendor	Invoice Description	Amount	Check #
Fund 101 General Fund					
Dept 000.000 REVENUE					
101-000.000-222.000	Due To County	OTTAWA COUNTY TREASURER	DOG LICENSES - APRIL	69.00	
101-000.000-231.000	DEFERRED COMP PAYABLE	ALERUS RETIREMENT SOLUTI	MERS DC & 457 PLAN - APRIL	1,099.74	
101-000.000-231.010	401A PAYABLE	ALERUS RETIREMENT SOLUTI	MERS DC & 457 PLAN - APRIL	10,184.85	
101-000.000-231.030	Misc Ins - Aflac	AFLAC	MISCELLANEOUS INSURANCE - APRIL	285.50	
101-000.000-284.208	5015 WARNER SAND MINING	FRESH COAST PLANNING LLC	PLANNING SERVICES - APRIL	65.00	
101-000.000-284.210	EMERALD SPRINGS-PUD-SIGNATURE L	FRESH COAST PLANNING LLC	PLANNING SERVICES - APRIL	26.00	
101-000.000-284.212	ALLENDALE CHRISTIAN EXPANSION-1	FRESH COAST PLANNING LLC	PLANNING SERVICES - APRIL	130.00	
101-000.000-284.242	CENTENNIAL FARMS TOWNHOMES	FRESH COAST PLANNING LLC	PLANNING SERVICES - APRIL	26.00	
101-000.000-284.244	POLYMER PACKAGING ADDITION	FRESH COAST PLANNING LLC	PLANNING SERVICES - APRIL	94.00	
101-000.000-284.245	5366 RICH ST-ALLIED INSTALLATIO	FRESH COAST PLANNING LLC	PLANNING SERVICES - APRIL	52.00	
101-000.000-284.246	46TH AVE AMENDMENT	FRESH COAST PLANNING LLC	PLANNING SERVICES - APRIL	130.00	
101-000.000-613.000	MISC INCOME	ALCOGARE LLC	TWO SIDED BALLOTS - FOIA REQUEST 2023	500.00	
Total For Dept 000.000 REVENUE				12,662.09	
Dept 171.000 Supervisor					
101-171.000-860.000	MILEAGE	ZACHARY FIELDS	MILEAGE REIMBURSEMENT	19.65	
Total For Dept 171.000 Supervisor				19.65	
Dept 209.000 EMPLOYEE INSURANCES					
101-209.000-717.000	LIFE INS	MUTUAL OF OMAHA INSURANC	INSURANCES - MAY	133.97	
101-209.000-718.000	DISABILITY INS	MUTUAL OF OMAHA INSURANC	INSURANCES - MAY	438.05	
101-209.000-720.000-DENTAL	EMPLOYERS HEALTH INSURANCE	MUTUAL OF OMAHA INSURANC	INSURANCES - MAY	1,197.02	
101-209.000-720.000-VISION	EMPLOYERS HEALTH INSURANCE	VISION SERVICE PLAN	HEALTH INSURANCE - MAY	349.35	
Total For Dept 209.000 EMPLOYEE INSURANCES				2,118.39	
Dept 248.000 ADMINISTRATION					
101-248.000-732.000	SUPPLIES	STAPLES	OFFICE SUPPLIES	77.77	
101-248.000-802.000-ITMONT	Contracted Services	REHMANN TECHNOLOGY SOLUT	INTERNAL & EXTERNAL SYSTEM-WIDE SCANS	648.00	
101-248.000-860.000	MILEAGE	SHELLY KOWALCZYK	MILEAGE & PARKING REIMBURSEMENT	41.60	
101-248.000-900.000	PRINTING, PUBLISHING, & POSTAGE	US POSTAL SERVICE	ANNUAL PO BOX FEE - 2023	332.00	
101-248.000-955.000	Miscellaneous	VERIZON WIRELESS	CELL PHONE CHARGES - APRIL	5.77	
Total For Dept 248.000 ADMINISTRATION				1,105.14	
Dept 265.000 BUILDING & GROUNDS					
101-265.000-802.000-CELLPH	Contracted Services	VERIZON WIRELESS	CELL PHONE CHARGES - APRIL	11.54	
101-265.000-802.000-TELEPH	Contracted Services	ACENTEK	TELEPHONE CHARGES - APRIL	946.13	
101-265.000-863.000	FUEL	WEX BANK-SPEEDWAY	FUEL CHARGES	45.78	
101-265.000-926.000-HEATFU	UTILITIES	DTE ENERGY	HEATING FUEL USAGE - APRIL	1,316.33	
101-265.000-930.000	Maintenance	ALLENDALE TRUE VALUE HDW	MAINTENANCE SUPPLIES - TWP HALL	171.51	
101-265.000-930.000	Maintenance	FAMILY FARM & HOME INC	MAINTENANCE SUPPLIES	209.28	
101-265.000-930.000	Maintenance	MINER SUPPLY COMPANY INC	MAINTENANCE SUPPLIES	12.62	
101-265.000-930.000	Maintenance	MINER SUPPLY COMPANY INC	JANITORIAL SUPPLIES	850.28	
101-265.000-930.000-TRUCKT	Maintenance	AMAZON CAPITAL SERVICES	TIRES FOR LAWN & GARDEN MOWER	58.79	
101-265.000-930.000-TRUCKT	Maintenance	BURNIPS EQUIPMENT COMPAN	DIPSTICK	14.62	
101-265.000-930.000-TRUCKT	Maintenance	TOLMAN'S AUTO TECH GROUP	TIRE REPLACEMENT	225.19	
101-265.000-955.000	Miscellaneous	LARRY HAVEMAN	MILEAGE REIMBURSEMENT	120.52	
Total For Dept 265.000 BUILDING & GROUNDS				3,982.59	
Dept 301.000 POLICE OFFICER					
101-301.000-802.000	Contracted Services	OTTAWA COUNTY FISCAL SER	SHERIFF DEPT SERVICES - APRIL	4,000.18	
101-301.000-802.000	Contracted Services	OTTAWA COUNTY FISCAL SER	SHERIFF DEPT SERVICES - APRIL	37,493.42	
Total For Dept 301.000 POLICE OFFICER				41,493.60	

UNJOURNALIZED

OPEN

GL Number	GL Desc	Vendor	Invoice Description	Amount	Check #
Fund 101 General Fund					
Dept 336.000 FIRE DEPT					
101-336.000-721.000-SEMINA	PROFESSIONAL DEVELOPMENT	FAMILY FARM & HOME INC	MAINTENANCE SUPPLIES	33.43	
101-336.000-732.000	SUPPLIES	ALLENDALE TRUE VALUE HDW	SUPPLIES - FIRE DEPT	516.25	
101-336.000-863.000-FUEL12	FUEL	WEX BANK-SPEEDWAY	FUEL CHARGES	39.86	
101-336.000-863.000-FUEL12	FUEL	WEX BANK-SPEEDWAY	FUEL CHARGES	78.93	
101-336.000-863.000-FUEL14	FUEL	WEX BANK-SPEEDWAY	FUEL CHARGES	60.40	
101-336.000-863.000-FUEL16	FUEL	WEX BANK-SPEEDWAY	FUEL CHARGES	42.38	
101-336.000-863.000-FUEL17	FUEL	WEX BANK-SPEEDWAY	FUEL CHARGES	207.25	
101-336.000-863.000-FUEL17	FUEL	WEX BANK-SPEEDWAY	FUEL CHARGES	195.41	
101-336.000-863.000-FUEL18	FUEL	WEX BANK-SPEEDWAY	FUEL CHARGES	36.04	
101-336.000-863.000-FUEL18	FUEL	WEX BANK-SPEEDWAY	FUEL CHARGES	23.50	
101-336.000-863.000-FUEL19	FUEL	WEX BANK-SPEEDWAY	FUEL CHARGES	130.23	
101-336.000-926.000-HEATFU	UTILITIES	DTE ENERGY	HEATING FUEL USAGE - APRIL	1,080.22	
101-336.000-935.000-MAINT1	Truck Maintenance	O'REILLY AUTOMOTIVE INC	LIFT SUPPORT	75.78	
101-336.000-935.000-MAINT1	Truck Maintenance	DYKSTRA'S AUTO GROUP INC	TRUCK MAINTENANCE - REPAIR LEAKING TI	30.00	
101-336.000-935.000-MAINT1	Truck Maintenance	WEST SHORE FIRE INC	TRUCK MAINTENANCE	256.03	
101-336.000-935.000-MAINT1	Truck Maintenance	GRAINGER	RUBBER CLAMPS	57.40	
101-336.000-937.000	Equipment Maintenance	AGILE SAFETY LLC	EQUIPMENT MAINTENANCE	41.51	
Total For Dept 336.000 FIRE DEPT				2,904.62	
Dept 449.000 HIGHWAY-M45					
101-449.000-955.000	Miscellaneous	AMAZON CAPITAL SERVICES	BOOTS	142.05	
Total For Dept 449.000 HIGHWAY-M45				142.05	
Dept 567.000 CEMETERY					
101-567.000-930.000	Maintenance	ALLENDALE TRUE VALUE HDW	MAINTENANCE SUPPLIES - TWP HALL	111.79	
101-567.000-930.000	Maintenance	FAMILY FARM & HOME INC	MAINTENANCE SUPPLIES	45.98	
Total For Dept 567.000 CEMETERY				157.77	
Dept 701.000 PLANNING & ZONING					
101-701.000-802.000	Contracted Services	FRESH COAST PLANNING LLC	PLANNING SERVICES - APRIL	2,722.00	
Total For Dept 701.000 PLANNING & ZONING				2,722.00	
Dept 751.000 RECREATION AND PARKS					
101-751.000-930.000	Maintenance	ALLENDALE TRUE VALUE HDW	MAINTENANCE SUPPLIES - TWP HALL	58.15	
101-751.000-930.000	Maintenance	MENARDS-HOLLAND INC	MAINTENANCE IMPRVMENTS & SUPPLIES	28.93	
101-751.000-930.000	Maintenance	VARIESLAND GROWERS CO-OP	BUCCANER PLUS - 2.5 GALLON	67.00	
Total For Dept 751.000 RECREATION AND PARKS				154.08	
Dept 753.000 COMMUNITY PROMOTIONS					
101-753.000-807.000-INDEPE	COMMUNITY PROGRAMS	MATRIX ENTERTAINMENT	4TH OF JULY ACTIVITIES DEPOSIT	500.00	
Total For Dept 753.000 COMMUNITY PROMOTIONS				500.00	
Dept 790.000 LIBRARY					
101-790.000-721.000-DUESXX	PROFESSIONAL DEVELOPMENT	ALLENDALE ROTARY CLUB	ANNUAL MEMBERSHIP DUES - COOK	250.00	
101-790.000-732.000-AVMATE	SUPPLIES	AMAZON CAPITAL SERVICES	CREDIT - AV MATERIAL	(0.05)	
101-790.000-732.000-AVMATE	SUPPLIES	AMAZON CAPITAL SERVICES	BOARD GAMES	44.67	
101-790.000-732.000-AVMATE	SUPPLIES	MIDWEST TAPE LLC	DVDS	31.44	
101-790.000-732.000-AVMATE	SUPPLIES	MIDWEST TAPE LLC	DVDS	26.22	
101-790.000-732.000-BOOKSX	SUPPLIES	BAKER & TAYLOR BOOKS LLC	BOOKS	409.29	
101-790.000-732.000-BOOKSX	SUPPLIES	BAKER & TAYLOR BOOKS LLC	BOOKS	39.02	
101-790.000-732.000-BOOKSX	SUPPLIES	BAKER & TAYLOR BOOKS LLC	BOOKS	329.29	
101-790.000-732.000-BOOKSX	SUPPLIES	LAKELAND LIBRARY COOPERA	BOOKPAGE SUBSCRIPTION	180.00	
101-790.000-732.000-CHILDB	SUPPLIES	BAKER & TAYLOR BOOKS LLC	CHILDREN'S BOOKS	209.33	

UNJOURNALIZED

OPEN

GL Number	GL Desc	Vendor	Invoice Description	Amount	Check #
Fund 101 General Fund					
Dept 790.000 LIBRARY					
101-790.000-732.000-CHILDB	SUPPLIES	BAKER & TAYLOR BOOKS LLC	CHILDREN'S BOOKS	269.86	
101-790.000-802.000	Contracted Services	FISH WINDOW CLEANING	WINDOW CLEANING @ LIBRARY	161.00	
101-790.000-802.000	Contracted Services	MEYERS CLEANING SERVICE	CARPET CLEANING @ LIBRARY	985.00	
101-790.000-802.000-AQUARI	Contracted Services	AQUA BLUE AQUARIUM SOLUT	AQUARIUM MAINTENANCE - APRIL	94.98	
101-790.000-802.000-COPIER	Contracted Services	OFFICE MACHINES COMPANY	MONTHLY COPIER CHARGES	162.26	
101-790.000-802.000-DIGITA	Contracted Services	MIDWEST TAPE LLC	DIGITAL COLLECTION/DOWNLOADABLES	1,299.95	
101-790.000-802.000-TECHNO	Contracted Services	ACENTEK	TELEPHONE CHARGES - APRIL	218.95	
101-790.000-802.000-TELEPH	Contracted Services	ACENTEK	TELEPHONE CHARGES - APRIL	45.70	
101-790.000-807.000-ADULTP	COMMUNITY PROGRAMS	AMAZON CAPITAL SERVICES	ADULT PROGRAM SUPPLIES	10.49	
101-790.000-807.000-ADULTP	COMMUNITY PROGRAMS	AMAZON CAPITAL SERVICES	CREDIT/REFUND - ADULT PROGRAM	(18.99)	
101-790.000-807.000-ADULTP	COMMUNITY PROGRAMS	AMAZON CAPITAL SERVICES	COFFEE & CRAFTS	20.69	
101-790.000-860.000	MILEAGE	ASHLEY JOHNSON	VEHICLE REPAIR REIMBURSEMENT	122.49	
101-790.000-926.000-HEATFU	UTILITIES	DTE ENERGY	HEATING FUEL USAGE - APRIL	281.31	
101-790.000-955.000	Miscellaneous	ASHLEY JOHNSON	VEHICLE REPAIR REIMBURSEMENT	500.00	
101-790.000-955.000	Miscellaneous	SPECTRUM HEALTH HOSPITAL	DRUG SCREENING - LIBRARY STAFF	55.00	
Total For Dept 790.000 LIBRARY				5,727.90	
Total For Fund 101 General Fund				73,689.88	
Fund 249 Building Department Fund					
Dept 000.000 REVENUE					
249-000.000-231.010	401A PAYABLE	ALERUS RETIREMENT SOLUTI	MERS DC & 457 PLAN - APRIL	128.80	
Total For Dept 000.000 REVENUE				128.80	
Dept 371.000 INSPECTION DEPARTMENT					
249-371.000-717.000	LIFE INS	MUTUAL OF OMAHA INSURANC	INSURANCES - MAY	3.09	
249-371.000-718.000	DISABILITY INS	MUTUAL OF OMAHA INSURANC	INSURANCES - MAY	8.17	
Total For Dept 371.000 INSPECTION DEPARTMENT				11.26	
Total For Fund 249 Building Department Fund				140.06	
Fund 252 RENTAL ADMINISTRATION					
Dept 000.000 REVENUE					
252-000.000-231.000	DEFERRED COMP PAYABLE	ALERUS RETIREMENT SOLUTI	MERS DC & 457 PLAN - APRIL	100.01	
252-000.000-231.010	401A PAYABLE	ALERUS RETIREMENT SOLUTI	MERS DC & 457 PLAN - APRIL	448.42	
Total For Dept 000.000 REVENUE				548.43	
Dept 371.000 INSPECTION DEPARTMENT					
252-371.000-717.000	LIFE INS	MUTUAL OF OMAHA INSURANC	INSURANCES - MAY	6.18	
252-371.000-718.000	DISABILITY INS	MUTUAL OF OMAHA INSURANC	INSURANCES - MAY	21.74	
252-371.000-720.000-DENTAL	EMPLOYERS HEALTH INSURANCE	MUTUAL OF OMAHA INSURANC	INSURANCES - MAY	109.94	
252-371.000-720.000-VISION	EMPLOYERS HEALTH INSURANCE	VISION SERVICE PLAN	HEALTH INSURANCE - MAY	14.37	
Total For Dept 371.000 INSPECTION DEPARTMENT				152.23	
Total For Fund 252 RENTAL ADMINISTRATION				700.66	
Fund 403 FIRE STATION BUILDING FUND					
Dept 901.000 CONSTRUCTION					
403-901.000-971.000	CAPITAL OUTLAY	AMAZON CAPITAL SERVICES	ARTWORK / DECOR	109.82	
403-901.000-971.000	CAPITAL OUTLAY	AMAZON CAPITAL SERVICES	ARTWORK / DECOR	232.40	
403-901.000-971.000	CAPITAL OUTLAY	CHROUCH COMMUNICATIONS I	ALERTING SYSTEM / IT	2,341.19	
403-901.000-971.000	CAPITAL OUTLAY	CREATIVE IMAGE DESIGNERS	LOCKER TAGS - MEN / WOMEN	266.25	
Total For Dept 901.000 CONSTRUCTION				2,949.66	

UNJOURNALIZED

OPEN

GL Number	GL Desc	Vendor	Invoice Description	Amount	Check #
Fund 403 FIRE STATION BUILDING FUND					
		Total For Fund 403 FIRE STATION BUILDING FUND		2,949.66	
Fund 404 CAPITAL/ONE-TIME PROJECTS FUND					
Dept 248.000 ADMINISTRATION					
404-248.000-971.000	CAPITAL OUTLAY	PITNEY BOWES INC	NEW POSTAGE MACHINE	3,469.62	
		Total For Dept 248.000 ADMINISTRATION		3,469.62	
Dept 265.000 BUILDING & GROUNDS					
404-265.000-971.000	CAPITAL OUTLAY	CARPET BONANZA INC	NEW CARPET BALANCE @ TWP OFFICE	12,571.46	
404-265.000-971.000	CAPITAL OUTLAY	MENARDS-HOLLAND INC	MAINTENANCE IMPRVMENTS & SUPPLIES	1,030.98	
		Total For Dept 265.000 BUILDING & GROUNDS		13,602.44	
Dept 971.000 CAPITAL OUTLAY					
404-971.000-971.000	CAPITAL OUTLAY	LIBRARY MARKET	ANNUAL SUBSCRIPTION - LIBRARY CALENDAR	2,000.00	
		Total For Dept 971.000 CAPITAL OUTLAY		2,000.00	
		Total For Fund 404 CAPITAL/ONE-TIME PROJECTS FUND		19,072.06	
Fund 592 Water & Sewer					
Dept 000.000 REVENUE					
592-000.000-226.000	Due to Robinson Township	ROBINSON TOWNSHIP	DEBT REDUCTION PAYMENT - 1ST QTR 2023	180.00	
592-000.000-231.000	DEFERRED COMP PAYABLE	ALERUS RETIREMENT SOLUTI	MERS DC & 457 PLAN - APRIL	958.26	
592-000.000-231.010	401A PAYABLE	ALERUS RETIREMENT SOLUTI	MERS DC & 457 PLAN - APRIL	5,317.90	
592-000.000-231.030	Misc Ins - Aflac	AFLAC	MISCELLANEOUS INSURANCE - APRIL	117.28	
592-000.000-266.000	WAGE GARNISHMENT PAYABLE	ILLINOIS STATE DISBURSEM	CHILD SUPPORT DISBURSEMENT	230.77	
		Total For Dept 000.000 REVENUE		6,804.21	
Dept 248.000 ADMINISTRATION					
592-248.000-802.000-ITMONT	Contracted Services	REHMANN TECHNOLOGY SOLUT	INTERNAL & EXTERNAL SYSTEM-WIDE SCANS	432.00	
592-248.000-860.000	MILEAGE	SHELLY KOWALCZYK	MILEAGE & PARKING REIMBURSEMENT	41.60	
592-248.000-900.000	PRINTING, PUBLISHING, & POSTAGE	KCI (KENT COMMUNICATIONS	2022 WATER QUALITY REPORTS	2,893.93	
		Total For Dept 248.000 ADMINISTRATION		3,367.53	
Dept 536.000 WATER					
592-536.000-717.000	LIFE INS	MUTUAL OF OMAHA INSURANC	INSURANCES - MAY	37.79	
592-536.000-718.000	DISABILITY INS	MUTUAL OF OMAHA INSURANC	INSURANCES - MAY	138.03	
592-536.000-720.000-DENTAL	EMPLOYERS HEALTH INSURANCE	MUTUAL OF OMAHA INSURANC	INSURANCES - MAY	401.07	
592-536.000-720.000-VISION	EMPLOYERS HEALTH INSURANCE	VISION SERVICE PLAN	HEALTH INSURANCE - MAY	105.06	
592-536.000-732.000-GENSUP	SUPPLIES	ALLENDALE TRUE VALUE HDW	GENERAL SUPPLIES - WATER DEPT	311.42	
592-536.000-732.000-GENSUP	SUPPLIES	FAMILY FARM & HOME INC	ROPE	9.99	
592-536.000-732.000-TOOLSX	SUPPLIES	AMAZON CAPITAL SERVICES	REPLACEMENT LOCATOR	549.00	
592-536.000-733.000	WATER COST	OTTAWA COUNTY PUBLIC UTI	WATER USE/SYSTEM MAINTENANCE - MARCH	63,998.37	
592-536.000-802.000-MULTIP	Contracted Services	AMBS CALL CENTER	EMERGENCY CALL NUMBER	60.00	
592-536.000-802.000-MULTIP	Contracted Services	H2O COMPLIANCE SERVICES	CROSS CONNECTION CONTROL PROGRAM MGMT	877.50	
592-536.000-802.000-TELEPH	Contracted Services	ACENTEK	TELEPHONE CHARGES - APRIL	39.95	
592-536.000-863.000	FUEL	WEX BANK-SPEEDWAY	FUEL CHARGES	512.39	
592-536.000-926.000-HEATFU	UTILITIES	DTE ENERGY	HEATING FUEL USAGE - APRIL	821.51	
592-536.000-926.000-HEATME	UTILITIES	DTE ENERGY	HEATING FUEL USAGE - APRIL	352.05	
592-536.000-930.000	MAINTENANCE	ALLIED MECHANICAL SERVIC	HVAC PREVENTATIVE MAINTENANCE	793.50	
592-536.000-930.000	MAINTENANCE	HD SUPPLY INC	HYDRANT MAINTENANCE	825.76	
592-536.000-930.000	MAINTENANCE	HD SUPPLY INC	PAINT BRUSHES FOR HYDRANTS	53.94	
592-536.000-930.000	MAINTENANCE	WINDEMULLER ELECTRIC INC	REPLACE FAILING EQUIPMENT	8,000.00	
592-536.000-930.000	MAINTENANCE	WOLVERINE POWER SYSTEMS	8 KW MINOR	180.00	
592-536.000-930.000	MAINTENANCE	WOLVERINE POWER SYSTEMS	215 KW MAJOR	1,020.00	

UNJOURNALIZED

OPEN

GL Number	GL Desc	Vendor	Invoice Description	Amount	Check #
Fund 592 Water & Sewer					
Dept 536.000 WATER					
592-536.000-930.000	MAINTENANCE	WOLVERINE POWER SYSTEMS	GENERATOR MAINTENANCE	715.00	
Total For Dept 536.000 WATER				79,802.33	
Dept 537.000 SEWER					
592-537.000-717.000	LIFE INS	MUTUAL OF OMAHA INSURANC	INSURANCES - MAY	37.79	
592-537.000-718.000	DISABILITY INS	MUTUAL OF OMAHA INSURANC	INSURANCES - MAY	138.02	
592-537.000-720.000-DENTAL	EMPLOYERS HEALTH INSURANCE	MUTUAL OF OMAHA INSURANC	INSURANCES - MAY	401.07	
592-537.000-720.000-VISION	EMPLOYERS HEALTH INSURANCE	VISION SERVICE PLAN	HEALTH INSURANCE - MAY	105.06	
592-537.000-732.000-GENSUP	SUPPLIES	ALLENDALE TRUE VALUE HDW	GENERAL SUPPLIES - WASTE DEPT	234.31	
592-537.000-802.000-MULTIP	Contracted Services	AMBS CALL CENTER	EMERGENCY CALL NUMBER	60.00	
592-537.000-802.000-MULTIP	Contracted Services	PACE ANALYTICAL SERVICES	MERCURY TESTING	505.40	
592-537.000-802.000-MULTIP	Contracted Services	PREIN & NEWHOF PC INC	CHLORIDE SULFATE TESTS	60.00	
592-537.000-802.000-TELEPH	Contracted Services	ACENTEK	TELEPHONE CHARGES - APRIL	355.01	
592-537.000-863.000	FUEL	WEX BANK-SPEEDWAY	FUEL CHARGES	512.38	
592-537.000-926.000-HEATFU	UTILITIES	DTE ENERGY	HEATING FUEL USAGE - APRIL	1,616.33	
592-537.000-930.000-COLLEC	MAINTENANCE	WOLVERINE POWER SYSTEMS	80 KW PORTABLE MAJOR	820.00	
592-537.000-930.000-GENMAI	MAINTENANCE	ALLIED MECHANICAL SERVIC	HVAC PREVENTATIVE MAINTENANCE	793.50	
592-537.000-930.000-GROUND	MAINTENANCE	ZEHN'S LANDSCAPE & LAWN	WRRF GROUNDS MAINTENANCE	6,680.00	
592-537.000-930.000-WRRFMA	MAINTENANCE	WALKER PROCESS EQUIPMENT	RBC BEARING	4,239.88	
592-537.000-930.000-WRRFMA	MAINTENANCE	WALKER PROCESS EQUIPMENT	RBC BEARING	8,291.28	
Total For Dept 537.000 SEWER				24,850.03	
Total For Fund 592 Water & Sewer				114,824.10	

05/02/2023 03:45 PM

User: DENISE

DB: ALLENDALE

INVOICE GL DISTRIBUTION REPORT FOR ALLENDALE CHARTER TOWNSHIP

EXP CHECK RUN DATES 04/26/2023 - 05/09/2023

UNJOURNALIZED

OPEN

Page: 6/6

GL Number	GL Desc	Vendor	Invoice Description	Amount	Check #
-----------	---------	--------	---------------------	--------	---------

Fund Totals:

Fund 101 General Fund	73,689.88
Fund 249 Building Depa	140.06
Fund 252 RENTAL ADMINI	700.66
Fund 403 FIRE STATION	2,949.66
Fund 404 CAPITAL/ONE-T	19,072.06
Fund 592 Water & Sewer	114,824.10

Total For All Funds:	<u>211,376.42</u>
----------------------	-------------------

INTERIM PAYMENTS
Board Meeting: 05/08/23

DATE	CHECK #	AMOUNT	VENDOR	DESCRIPTION
4/20/2023	103435	\$ 4,131.90	PARKWAY ELECTRIC & COMMUNICATIONS	Reprogram Board Room Electronics
4/21/2023	EFT	\$ 1,719.70	PRIORITY HEALTH	HRA Payment
4/27/2023	EFT	\$ 69,713.55	EMPLOYEES	Bi-Weekly Payroll
4/27/2023	EFT	\$ 20,341.36	FEDERAL GOV'T	Payroll IRS Tax Payment
4/28/2023	EFT	\$ 9.65	PRIORITY HEALTH	HRA Payment
5/3/2023	EFT	\$ 13,915.23	POC FIRE FIGHTERS	Monthly Payroll
5/3/2023	EFT	\$ 2,998.32	FEDERAL GOV'T	Payroll IRS Tax Payment
<hr/>				
\$ 112,829.71 TOTAL				

**ALLENDALE CHARTER TOWNSHIP
PLANNING COMMISSION MEETING**

April 17, 2023

7:00 p.m.

Allendale Township Public Meeting Room

1. Call the Meeting to Order

2. Roll Call:

Present: Adams, Westerling, Zuniga, Nadda, Zeinstra

Absent: Jacquot

Staff and Guests Present: Planner Greg Ransford, Robert Chapin

3. Communications and Correspondence: None

4. Motion by Zuniga to approve the April 3, 2023, Planning Commission Minutes as presented.
Seconded by Zeinstra. **Approved 5-0**

5. Motion by Adams to approve the April 17, 2023, Planning Commission Agenda as presented.
Seconded by Nadda. **Approved 5-0**

6. Public Comments for *non-public hearing item*:

Chairperson Adams opened the public comment section for non-public hearing items.

Bob Chapin, a resident of Allendale, stated that he is here for the outdoor venue discussion and open to answering any questions the Commission may have of him.

Seeing no more comments, Chairperson Adams closed the public comment section.

7. Public Hearings: None

8. Site Plan Review: None

9. New Business: None

10. Old Business:

A. Discussion of Text Amendments

- Outdoor Venues

Planner Ransford reviewed his memo regarding outdoor venues and the sample language that his office provided for the Commissioners.

Motion by Adams to include a public comment section after Commissioners discussed the outdoor venue language for Mr. Chapin to be able to provide feedback. Seconded by Westerling. **Approved 5-0**

Commissioners discussed the language provided and directed staff to draft language for the Commission's review.

Chairperson Adams opened the public comment section for the Outdoor Venues topic.

Bob Chapin thanked the Commissioners for their review of this topic. Mr. Chapin noted that he agreed with the Commissioners' discussion of including regulations regarding parking and traffic and including approval from the Ottawa County Sheriff's Office.

Seeing no more comments, Chairperson Adams closed the public comment time.

- Section 23.08F2ci & Section 23.08H – Removal of Topsoil, Sand, Gravel, or Other Materials

Planner Ransford presented the revision made.

Commissioners accepted the change that was made.

- Outdoor Wood Boilers

Planner Ransford reviewed the revised language and noted that he provided an instruction manual from an outdoor wood boiler. Planner Ransford asked the Commissioners if they would like this amendment to go in the Zoning Ordinance or in the Police Power Ordinance, and Commissioners believe it would be better fit in the Zoning Ordinance.

Commissioners opined that they would like change Section 5.2 to note a setback of 150 ft. or manufacturer's standard, whichever is greater, to the neighboring residence and directed Planner Ransford to make that change. Ransford will draft the language into ordinance form for inclusion into the Zoning Ordinance.

- Residential Planned Unit Development Open Space

Commissioners discussed the past examples provided by Planner Ransford.

Commissioners directed Planner Ransford to provide language for their review.

- Master Plan References

- Section 2.01 – Purpose
- Section 3.01 – Effect of Zoning
- Section 12.06A & Section 12.06B – Development Requirements for PUD's with Residential Uses

Commissioners were satisfied with the proposed changes.

B. Planning Commission By-laws

Commissioners discussed noting in the By-laws who the designated agent is for the Secretary. Commissioners directed Planner Ransford to name the Planner and the Planning and Zoning Assistant/Coordinator as the designees to complete the duties listed.

11. Public Comments

Seeing no public present, Chairperson Adams opened and closed the public comment section.

12. Township Board Reports

Mr. Zeinstra reported that the Board was reviewing the proposed contract from Fleis and Vandenbrink regarding the next water and sewer expansion and maintenance project.

13. Commissioner and Staff Comments

No comments from Commissioners and Staff.

14. Chairperson Adams adjourned the meeting at 8:42 p.m.

Next meeting May 1, 2023, at 7:00 p.m.

Minutes respectfully submitted by Kelli McGovern



<u>ALARM TYPE</u>	<u>MONTH</u>	<u>MAY</u>	<u>YEAR TO DATE</u>	<u>YEAR TO DATE</u>	<u>CHANGE</u>
	<u>March</u>	<u>2023</u>	<u>2022</u>	<u>2023</u>	
MEDICAL EMERGENCIES	79	204	185	19	
Canceled Enroute	8	16	12	4	
Squad 172 Responses	41	85	95	-10	
Asst. Amb.	14	33	39	-6	
Lift Assist	1	3	4	-1	
VEHICLE ACCIDENTS WITH INJURIES	2	11	9	2	
Cancelled Enroute	1	1	0	1	
PROPERTY DAMAGE ACCIDENTS	0	3	4	-1	
Canceled Enroute	2	4	0	4	
SMOKE/ODOR INVESTIGATION	6	9	2	7	
Canceled Enroute	0	0	0	EVEN	
MEDICAL ALARM	0	3	2	1	
Canceled Enroute	0	0	0	EVEN	
FIRE ALARM	5	13	28	-15	
Canceled Enroute	2	7	1	6	
SERVICE CALL / LOCK-IN/OUT	0	3	4	-1	
MUTUAL AID/AUTOMATIC AID:					
AUTOMATIC AID GIVEN:	7	8	2	6	
MUTUAL AID GIVEN:	2	8	5	3	
AUTOMATIC AID RECEIVED	1	4	4	EVEN	
MUTUAL AID RECEIVED	4	6	3	3	
BUILDING FIRES	0	1	3	-2	
GRASS, BRUSH, WOODS	0	0	1	-1	
TRASH, REFUSE, DUMPSTER	0	0	1	-1	
VEHICLE FIRES	3	3	1	2	
CO ALARM	1	6	3	3	
GAS LEAK / WIRE DOWN	2	5	4	1	
NO DISPATCH	6	12	5	7	
UNAUTHORIZED BURN	0	1	2	-1	
TOTALS	141	354	317	37	
	<u>Month</u>	<u>2023 to Date</u>	<u>2022 To Date</u>	<u>23/22 Change</u>	
Property Loss: (\$)	\$22,543.00	\$25,543.00	\$23,845.00	\$1,998.00	
Property Saved (\$)	\$2,300	\$251,656	\$1,275,233	-\$1,023,577.00	
Man Hours on Alarms	572.25	1,454	1258.50	196.5	
Training Man Hours	106	315.25	247.50	68	
Fire School / PPS / Meeting / EQ Checks / Fire Prev / Other	181.25	993.05	408.25	584.8	
Burning Permits Issued	25	105	92	13	
Grand Valley Alarms	10	30	29	1	
Off-Campus Student Housing	15	41	46	-5	
Stonebridge Senior Housing	12	26	8	18	
Green Acres	4	6	23	-17	
Atrium of Allendale	10	27	29	-2	

AFD - Training and Activities

Report Filters

Activity/Training Start Date Time: is between '3/1/2023' and '3/31/2023'

Activity/Training Start Date Time	Activity/Training End Date Time	Activity/Training Start Day Name	Activity/Training Event Name	Activity/Training Attendee Count
Activity/Training Event Type: Activity				
03/01/2023 08:00:00	03/01/2023 14:00:00	Wednesday	HAZMAT	1
03/03/2023 06:00:00	03/03/2023 18:00:00	Friday	PART TIME SHIFT	1
03/04/2023 09:15:00	03/04/2023 12:15:00	Saturday	EQUIPMENT CHECKS #4	5
03/01/2023 15:03:18	03/01/2023 15:03:20	Wednesday	CAR SEAT TRAINING	1
03/05/2023 15:06:03	03/05/2023 16:06:04	Sunday	CAR SEAT TRAINING	1
03/08/2023 21:00:00	03/08/2023 22:00:00	Wednesday	MI TRAIN CEU	1
03/09/2023 21:00:00	03/09/2023 22:00:00	Thursday	MI TRAIN CEU	1
03/09/2023 18:30:00	03/09/2023 21:30:00	Thursday	HAZMAT MONTHLY	2
03/10/2023 18:00:00	03/10/2023 20:30:00	Friday	EQUIPMENT CHECKS #5	4
03/01/2023 08:45:00	03/01/2023 15:00:00	Wednesday	FIRE PREVENTION	3
03/02/2023 08:45:00	03/02/2023 15:00:00	Thursday	FIRE PREVENTION	2
03/13/2023 17:00:00	03/13/2023 18:00:00	Monday	PART TIME SHIFT	1
03/18/2023 09:45:00	03/18/2023 11:30:00	Saturday	FIRE PREVENTION	1
03/18/2023 08:30:21	03/18/2023 11:30:34	Saturday	EQUIPMENT CHECKS #6	5
03/10/2023 14:00:00	03/10/2023 15:00:00	Friday	MI TRAIN - CEU	1
03/20/2023 15:00:00	03/20/2023 16:30:00	Monday	PART TIME SHIFT	1
03/20/2023 21:00:00	03/20/2023 22:00:00	Monday	CEU TRAINING	1
03/21/2023 06:00:00	03/21/2023 18:00:00	Tuesday	PART TIME SHIFT	1
03/21/2023 13:00:00	03/21/2023 14:00:00	Tuesday	MI TRAIN CEU	1
03/21/2023 15:00:00	03/21/2023 16:00:00	Tuesday	MI TRAIN CEU	1
03/23/2023 09:45:00	03/23/2023 11:45:00	Thursday	FIRE PREVENTION	6
03/21/2023 06:30:00	03/21/2023 17:00:00	Tuesday	HAZMAT	1
03/23/2023 06:00:00	03/23/2023 18:00:00	Thursday	PART TIME SHIFT	1
03/24/2023 18:30:00	03/24/2023 20:30:00	Friday	EQUIPMENT CHECKS #1	4

Activity/Training Start Date Time	Activity/Training End Date Time	Activity/Training Start Day Name	Activity/Training Event Name	Activity/Training Attendee Count
03/25/2023 09:00:00	03/25/2023 10:00:00	Saturday	FIRE PREVENTION	4
03/27/2023 18:30:00	03/27/2023 21:00:00	Monday	RESCUE TASK FORCE TRAINING	1
03/01/2023 13:01:56	03/31/2023 13:02:02	Wednesday	CAPTAIN PAY	1
03/01/2023 13:03:29	03/31/2023 13:03:34	Wednesday	EMS COORDINATOR	1
03/01/2023 13:05:08	03/31/2023 13:05:15	Wednesday	EMS REPORT AUDIT	1
03/01/2023 13:06:42	03/31/2023 13:06:51	Wednesday	OFFICER PAY D.C.	1
03/01/2023 13:57:10	03/31/2023 13:57:16	Wednesday	OFFICER PAY LT.	5
03/01/2023 13:59:13	03/31/2023 13:59:19	Wednesday	SERGEANT PAY	6
03/28/2023 18:00:00	03/28/2023 20:00:00	Tuesday	HAZMAT	2
03/28/2023 09:45:00	03/28/2023 11:45:00	Tuesday	FIRE PREVENTION	3
03/29/2023 09:45:00	03/29/2023 11:45:00	Wednesday	FIRE PREVENTION	2
03/31/2023 18:00:00	03/31/2023 20:00:00	Friday	EQUIPMENT CHECKS #2	4
Activity/Training Event Type: Training				
03/20/2023 18:45:00	03/20/2023 20:45:00	Monday	MEDICAL	6
03/20/2023 18:45:00	03/20/2023 20:45:00	Monday	DISTRICT ORIENTATION / MAPS	5
03/20/2023 18:45:00	03/20/2023 20:45:00	Monday	FIREFIGHTER FITNESS / HEALTH & SAFETY	6
03/13/2023 18:30:00	03/13/2023 20:30:00	Monday	ACTIVE ASSAILANT	13
03/06/2023 18:45:00	03/06/2023 20:45:00	Monday	MEDICAL	7
03/06/2023 18:45:00	03/06/2023 20:45:00	Monday	DISTRICT ORIENTATION / MAPS	8
03/06/2023 18:45:00	03/06/2023 20:45:00	Monday	FIREFIGHTER FITNESS / HEALTH & SAFETY	8

NFIRS Run Data Report - Day of Week

Basic Shift Or Platoon (FD1.30)	Number of Runs
Day of Week: 01 - Sunday	
	3
A - Shift 6P SUN / 6A FRI	10
C - Shift 6P FRI / 6P SUN	9
	Total: 22
Day of Week: 02 - Monday	
	1
A - Shift 6P SUN / 6A FRI	6
B - Shift 6A MON / 6P FRI	8
	Total: 15
Day of Week: 03 - Tuesday	
A - Shift 6P SUN / 6A FRI	8
B - Shift 6A MON / 6P FRI	11
	Total: 19
Day of Week: 04 - Wednesday	
A - Shift 6P SUN / 6A FRI	7
B - Shift 6A MON / 6P FRI	14
	Total: 21
Day of Week: 05 - Thursday	
A - Shift 6P SUN / 6A FRI	8
B - Shift 6A MON / 6P FRI	10
	Total: 18
Day of Week: 06 - Friday	
	1
A - Shift 6P SUN / 6A FRI	2
B - Shift 6A MON / 6P FRI	18
C - Shift 6P FRI / 6P SUN	6
	Total: 27
Day of Week: 07 - Saturday	
	1
C - Shift 6P FRI / 6P SUN	18
	Total: 19
	Total: 141

Alarm Analysis by District - Average Response Time AFD

CAD Basic Incident Number	Basic Incident Alarm Date Time (FD1.26)	Basic Apparatus Call Sign List	Basic Incident Day Name (FD1.3)	Basic Incident Zone/District Number (FD1.32)	Basic First Apparatus Arrived At Scene Dispatch To Arrived At Scene In Minutes
Basic Shift Or Platoon (FD1.30): (None)					
23-0000236	03/04/2023 12:28:15	171, 170	Saturday	192	5
23-0000262	03/12/2023 05:44:13	170, 171	Sunday	190	14
23-0000272	03/13/2023 16:20:54	170, 190	Monday	140	7
23-0000268	03/12/2023 23:46:23	199, 170, 171	Sunday	180	8
23-0000265	03/12/2023 18:23:21	170	Sunday	1806	8
23-0000351	03/31/2023 10:27:19	171	Friday	140	5
					Avg: 7.89
Basic Shift Or Platoon (FD1.30): A - Shift 6P SUN / 6A FRI					
23-0000343	03/29/2023 04:39:58	170, 171	Wednesday	140	11
23-0000318	03/23/2023 20:45:26	197	Thursday	162	
23-0000342	03/28/2023 18:00:13	171, 195	Tuesday	100	
23-0000348	03/29/2023 20:51:59	170, 171	Wednesday	180	7
23-0000347	03/29/2023 19:40:56	170, 199	Wednesday	OUT	7
23-0000266	03/12/2023 21:48:08	171, 170	Sunday	100	9
23-0000267	03/12/2023 22:17:31	170	Sunday	120	6
23-0000315	03/22/2023 23:44:34	170, 171	Wednesday	194	8
23-0000311	03/21/2023 21:21:20	195, 121	Tuesday	190	8
23-0000304	03/19/2023 20:30:31	171, 170	Sunday	191	10
23-0000291	03/16/2023 12:05:26	122	Thursday	OUT	4
23-0000330	03/26/2023 18:51:50	178, 194	Sunday		
23-0000331	03/26/2023 21:28:18	199, 171, 170	Sunday	180	9
23-0000332	03/26/2023 22:14:41	170, 171	Sunday	121	4
23-0000333	03/27/2023 00:48:20	170, 171, 199	Monday	141	8
23-0000320	03/24/2023 03:03:06	170	Friday	100	
23-0000336	03/27/2023 21:30:51	170	Monday	180	
23-0000337	03/27/2023 22:49:14	197	Monday	103	14
23-0000338	03/28/2023 01:35:59	171, 170	Tuesday	190	9
23-0000287	03/16/2023 00:11:10	170, 171	Thursday	160	10
23-0000288	03/16/2023 03:08:35	170, 171	Thursday	190	9
	03/16/2023 22:11:45	170	Thursday	191	
23-0000273	03/13/2023 21:31:16	141, 194, 122	Monday	180	1
23-0000274	03/13/2023 22:54:03	170, 171	Monday	194	10
23-0000275	03/14/2023 00:21:46	171, 170	Tuesday	190	11
23-0000276	03/14/2023 00:46:19		Tuesday	1131	4
23-0000278	03/14/2023 19:21:58	171, 170	Tuesday	140	8
23-0000279	03/14/2023 21:21:36	171, 170	Tuesday	190	10
23-0000280	03/14/2023 23:03:42	171, 170	Tuesday	120	7
23-0000281	03/15/2023 04:13:57	170, 171	Wednesday	100	8
23-0000264	03/12/2023 18:32:48	170, 171	Sunday	190	7
23-0000215	03/01/2023 22:50:01	171, 170	Wednesday	140	11
23-0000218	03/02/2023 03:04:46	170, 171	Thursday	190	9
23-0000217	03/02/2023 00:07:35	170, 122	Thursday	160	
23-0000216	03/01/2023 23:52:31	170, 171	Wednesday	120	6
23-0000221	03/02/2023 21:36:25	171, 170	Thursday	160	9
23-0000222	03/03/2023 01:00:00	171, 170	Friday	141	20
23-0000244	03/05/2023 20:01:36	170, 171	Sunday	120	7
23-0000246	03/05/2023 21:27:38	171, 170	Sunday	121	7
23-0000245	03/05/2023 20:06:37		Sunday	16WO	10
23-0000247	03/06/2023 05:11:44	199	Monday	120	
					Avg: 8.43
Basic Shift Or Platoon (FD1.30): B - Shift 6A MON / 6P FRI					
23-0000248	03/06/2023 12:20:51	171	Monday	160	5

CAD Basic Incident Number	Basic Incident Alarm Date Time (FD1.26)	Basic Apparatus Call Sign List	Basic Incident Day Name (FD1.3)	Basic Incident Zone/District Number (FD1.32)	Basic First Apparatus Arrived At Scene Dispatch To Arrived At Scene In Minutes
23-0000249	03/06/2023 13:17:11	171	Monday	120	3
23-0000250	03/07/2023 06:07:30	171	Tuesday	100	
23-0000251	03/07/2023 13:36:12	171	Tuesday	120	5
23-0000252	03/08/2023 12:00:47	190, 122, 161	Wednesday	OUT	12
23-0000253	03/08/2023 16:03:39	171, 190	Wednesday	120	6
23-0000254	03/09/2023 16:41:54	171	Thursday	170	5
23-0000256	03/10/2023 08:58:58	171	Friday	190	4
23-0000258	03/10/2023 11:04:44	170	Friday	192	5
23-0000257	03/10/2023 10:39:19	171	Friday	170	4
23-0000255	03/10/2023 07:54:58	171	Friday	120	8
23-0000223	03/03/2023 07:07:20	171	Friday	190	7
	03/03/2023 09:21:30	122	Friday	190	
23-0000225	03/03/2023 09:56:20	171	Friday	190	5
23-0000226	03/03/2023 10:11:10	171	Friday	141	6
23-0000227	03/03/2023 11:59:25	170	Friday	170	4
23-0000228	03/03/2023 14:48:36	171	Friday	120	5
23-0000219	03/02/2023 09:18:51	171	Thursday	180	7
23-0000220	03/02/2023 11:03:16	161, 190	Thursday	OUT	18
23-0000214	03/01/2023 16:24:31	171	Wednesday	140	6
23-0000277	03/14/2023 17:03:49	171	Tuesday	160	6
23-0000282	03/15/2023 07:16:19	171	Wednesday	120	6
23-0000284	03/15/2023 11:06:54	171	Wednesday	140	5
23-0000285	03/15/2023 13:26:26	171	Wednesday	190	5
23-0000283	03/15/2023 09:28:11	171	Wednesday	190	6
	03/17/2023 13:35:08	121, 172, 197, 171	Friday		7
23-0000293	03/17/2023 13:02:31	171	Friday	170	6
23-0000286	03/15/2023 16:40:04	122, 196	Wednesday	180	7
23-0000289	03/16/2023 08:35:03	171	Thursday	170	5
23-0000290	03/16/2023 09:42:12	171	Thursday	170	4
23-0000269	03/13/2023 07:56:17	171	Monday	120	5
23-0000259	03/10/2023 14:36:10	121, 191, 171	Friday	128	4
23-0000271	03/13/2023 14:13:26	121	Monday	170	11
23-0000270	03/13/2023 13:32:54	171, 190	Monday	190	6
23-0000339	03/28/2023 06:29:07	190, 161	Tuesday	OUT	5
23-0000340	03/28/2023 09:53:45	171	Tuesday	180	8
23-0000321	03/24/2023 08:46:16	161, 190, 122, 141	Friday	OUT	12
23-0000323	03/24/2023 12:50:51		Friday	120	7
	03/27/2023 09:32:48	171	Monday	140	
23-0000335	03/27/2023 12:06:31	171	Monday	190	5
23-0000295	03/17/2023 13:37:39		Friday	OUT	2
23-0000305	03/20/2023 15:38:56	121, 141, 190, 122, 161	Monday	100	13
23-0000309	03/21/2023 15:17:45	190	Tuesday	190	6
23-0000308	03/21/2023 14:58:08	190, 121	Tuesday	OUT	
23-0000307	03/21/2023 07:54:02	171	Tuesday	160	8
23-0000306	03/21/2023 07:25:44	190, 161	Tuesday	OUT	6
23-0000310	03/21/2023 17:45:36	122, 190, 161, 121, 195	Tuesday	110	5
23-0000313	03/22/2023 13:30:41	171	Wednesday	190	6
23-0000314	03/22/2023 14:02:47	122, 190	Wednesday	402	4
23-0000312	03/22/2023 11:35:07	171	Wednesday	141	6
23-0000316	03/23/2023 09:41:29	171	Thursday	191	7
23-0000317	03/23/2023 10:17:53	171	Thursday	161	5

CAD Basic Incident Number	Basic Incident Alarm Date Time (FD1.26)	Basic Apparatus Call Sign List	Basic Incident Day Name (FD1.3)	Basic Incident Zone/District Number (FD1.32)	Basic First Apparatus Arrived At Scene Dispatch To Arrived At Scene In Minutes
23-0000346	03/29/2023 15:48:18	171	Wednesday	120	4
	03/31/2023 10:39:31	171	Friday	190	
23-0000341	03/28/2023 16:22:49	171	Tuesday	170	5
23-0000319	03/23/2023 22:26:12	121, 197	Thursday	180	13
23-0000322	03/24/2023 11:36:24		Friday	170	4
23-0000344	03/29/2023 07:08:22	141, 122, 190	Wednesday	OUT	7
23-0000345	03/29/2023 08:28:15	161, 122, 190	Wednesday	100	3
23-0000350	03/30/2023 16:47:40	171	Thursday	120	4
23-0000349	03/30/2023 15:54:31	171	Thursday	120	5
					Avg: 6.16
Basic Shift Or Platoon (FD1.30): C - Shift 6P FRI / 6P SUN					
23-0000353	03/31/2023 19:34:41	121, 197	Friday	170	7
23-0000354	03/31/2023 23:10:41	141, 197	Friday	825	9
23-0000325	03/25/2023 01:00:40	170, 171	Saturday	141	12
23-0000324	03/24/2023 20:30:30	141, 198, 122	Friday	140	9
23-0000326	03/25/2023 17:33:37	170, 171	Saturday	120	7
23-0000327	03/25/2023 19:46:28	170, 171	Saturday	120	6
23-0000328	03/26/2023 01:35:07	170, 171	Sunday	180	
23-0000329	03/26/2023 09:18:43	171, 170	Sunday	160	14
23-0000297	03/18/2023 02:58:57	171, 170	Saturday	141	5
23-0000296	03/18/2023 02:38:19	171	Saturday	141	13
23-0000299	03/18/2023 21:30:04	171, 170	Saturday	170	11
23-0000298	03/18/2023 18:13:17	199	Saturday	191	7
23-0000300	03/19/2023 02:12:53	170, 171	Sunday	140	
23-0000302	03/19/2023 12:48:35	171, 170	Sunday	192	4
23-0000301	03/19/2023 10:19:22	171, 170	Sunday	141	8
23-0000303	03/19/2023 17:36:02	170, 171	Sunday	170	9
23-0000263	03/12/2023 15:27:57	171, 170	Sunday	192	10
23-0000229	03/03/2023 23:38:08	170, 171	Friday	121	9
23-0000230	03/03/2023 23:51:00	170	Friday	OUT	13
23-0000231	03/04/2023 02:53:50	170, 171	Saturday	140	12
23-0000232	03/04/2023 07:31:19	171, 170	Saturday	160	7
23-0000233	03/04/2023 08:40:14	170, 171	Saturday	140	4
23-0000235	03/04/2023 09:58:39	170	Saturday	120	7
23-0000234	03/04/2023 09:49:57	170, 171	Saturday	160	5
23-0000237	03/04/2023 14:17:54	171, 170	Saturday	140	6
23-0000238	03/04/2023 15:35:55	171, 170	Saturday	141	11
23-0000239	03/04/2023 17:53:26	141, 195, 122	Saturday	180	14
23-0000240	03/04/2023 18:25:51	171, 170	Saturday	120	3
23-0000241	03/04/2023 20:02:34	170, 171	Saturday	140	14
23-0000242	03/05/2023 04:29:59	170, 171	Sunday	100	9
23-0000243	03/05/2023 16:42:35	171, 170	Sunday	120	8
23-0000260	03/10/2023 18:58:18	171	Friday	190	4
23-0000261	03/11/2023 21:42:40	171, 170	Saturday	121	8
					Avg: 8.57
					Avg: 7.43
Report Filters					
Basic Incident Date - Derived (Fd1.3): Is between '3/1/2023' and '3/31/2023'					

AFD Incident Type Report (Summary)

Basic Incident Number (FD1)	Basic Incident Actual Time	Basic Shift Or Platoon (FD1.30)	Basic Incident Type Code And Description (FD1.21)	Basic Aid Given Or Received (FD1.22)	Basic Aid Given Their Fire Department Name (FD1.23)	Total Incidents Percent of Incidents
Incident Type Category (FD1.21): 1 - Fire						
23-0000252	12:00:33	B - Shift 6A MON / 6P FRI	111 - Building fire	Automatic aid given	Robinson Township Fire Dept	
23-0000321	08:45:17	B - Shift 6A MON / 6P FRI	111 - Building fire	Automatic aid given	Wright-Tallmadge Fire Dept	
23-0000339	06:28:42	B - Shift 6A MON / 6P FRI	111 - Building fire	Automatic aid given	Blendon Township Fire Dept	
23-0000344	07:05:48	B - Shift 6A MON / 6P FRI	111 - Building fire	Automatic aid given	Coopersville/Polkton Fire Dept.	
23-0000306	07:25:15	B - Shift 6A MON / 6P FRI	130 - Mobile property (vehicle) fire, other	Automatic aid given	Wright-Tallmadge Fire Dept	
23-0000220	11:02:58	B - Shift 6A MON / 6P FRI	132 - Road freight or transport vehicle fire	Mutual aid given	Coopersville/Polkton Fire Dept.	
23-0000310	17:45:20	B - Shift 6A MON / 6P FRI	132 - Road freight or transport vehicle fire	Mutual aid received		
						Total: 0.00%
Count: 7						
Incident Type Category (FD1.21): 3 - Rescue & Emergency Medical Service Incident						
23-0000264	18:29:59	A - Shift 6P SUN / 6A FRI	300 - Rescue, EMS incident, other	None		
23-0000304	20:28:29	A - Shift 6P SUN / 6A FRI	300 - Rescue, EMS incident, other	None		
23-0000301	10:18:48	C - Shift 6P FRI / 6P SUN	311 - Medical assist, assist EMS crew	None		
23-0000343	04:39:47	A - Shift 6P SUN / 6A FRI	311 - Medical assist, assist EMS crew	None		
23-0000247	05:11:27	A - Shift 6P SUN / 6A FRI	320 - Emergency medical service, other	None		
23-0000267	22:15:28	A - Shift 6P SUN / 6A FRI	320 - Emergency medical service, other	None		
23-0000214	16:23:19	B - Shift 6A MON / 6P FRI	321 - EMS call, excluding vehicle accident with injury	None		
23-0000215	22:48:06	A - Shift 6P SUN / 6A FRI	321 - EMS call, excluding vehicle accident with injury	None		
23-0000216	23:50:31	A - Shift 6P SUN / 6A FRI	321 - EMS call, excluding vehicle accident with injury	None		
23-0000218	03:04:26	A - Shift 6P SUN / 6A FRI	321 - EMS call, excluding vehicle accident with injury	None		
23-0000219	09:16:17	B - Shift 6A MON / 6P FRI	321 - EMS call, excluding vehicle accident with injury	None		
23-0000221	21:35:11	A - Shift 6P SUN / 6A FRI	321 - EMS call, excluding vehicle accident with injury	None		
23-0000222	00:57:25	A - Shift 6P SUN / 6A FRI	321 - EMS call, excluding vehicle accident with injury	None		
23-0000226	10:09:59	B - Shift 6A MON / 6P FRI	321 - EMS call, excluding vehicle accident with injury	None		
23-0000227	11:54:53	B - Shift 6A MON / 6P FRI	321 - EMS call, excluding vehicle accident with injury	None		
23-0000228	14:46:36	B - Shift 6A MON / 6P FRI	321 - EMS call, excluding vehicle accident with injury	None		
23-0000229	23:36:00	C - Shift 6P FRI / 6P SUN	321 - EMS call, excluding vehicle accident with injury	None		
23-0000231	02:50:18	C - Shift 6P FRI / 6P SUN	321 - EMS call, excluding vehicle accident with injury	None		
23-0000232	07:31:03	C - Shift 6P FRI / 6P SUN	321 - EMS call, excluding vehicle accident with injury	None		
23-0000233	08:37:29	C - Shift 6P FRI / 6P SUN	321 - EMS call, excluding vehicle accident with injury	None		
23-0000234	09:48:20	C - Shift 6P FRI / 6P SUN	321 - EMS call, excluding vehicle accident with injury	None		
23-0000235	09:55:47	C - Shift 6P FRI /	321 - EMS call, excluding	None		

Basic Incident Number (FD1)	Basic Incident Actual Time	Basic Shift Or Platoon (FD1.30)	Basic Incident Type Code And Description (FD1.21)	Basic Aid Given Or Received (FD1.22)	Basic Aid Given Their Fire Department Name (FD1.23)	Total Incidents Percent of Incidents
		6P SUN	vehicle accident with injury			
23-0000236	12:26:07		321 - EMS call, excluding vehicle accident with injury	None		
23-0000237	14:15:35	C - Shift 6P FRI / 6P SUN	321 - EMS call, excluding vehicle accident with injury	None		
23-0000238	15:34:08	C - Shift 6P FRI / 6P SUN	321 - EMS call, excluding vehicle accident with injury	None		
23-0000240	18:22:55	C - Shift 6P FRI / 6P SUN	321 - EMS call, excluding vehicle accident with injury	None		
23-0000241	19:59:39	C - Shift 6P FRI / 6P SUN	321 - EMS call, excluding vehicle accident with injury	None		
23-0000242	04:27:07	C - Shift 6P FRI / 6P SUN	321 - EMS call, excluding vehicle accident with injury	None		
23-0000243	16:39:35	C - Shift 6P FRI / 6P SUN	321 - EMS call, excluding vehicle accident with injury	None		
23-0000244	20:00:23	A - Shift 6P SUN / 6A FRI	321 - EMS call, excluding vehicle accident with injury	None		
23-0000246	21:25:09	A - Shift 6P SUN / 6A FRI	321 - EMS call, excluding vehicle accident with injury	None		
23-0000248	12:17:30	B - Shift 6A MON / 6P FRI	321 - EMS call, excluding vehicle accident with injury	None		
23-0000249	13:15:28	B - Shift 6A MON / 6P FRI	321 - EMS call, excluding vehicle accident with injury	None		
23-0000251	13:33:31	B - Shift 6A MON / 6P FRI	321 - EMS call, excluding vehicle accident with injury	None		
23-0000253	16:00:42	B - Shift 6A MON / 6P FRI	321 - EMS call, excluding vehicle accident with injury	None		
23-0000254	16:40:57	B - Shift 6A MON / 6P FRI	321 - EMS call, excluding vehicle accident with injury	None		
23-0000255	07:54:36	B - Shift 6A MON / 6P FRI	321 - EMS call, excluding vehicle accident with injury	None		
23-0000256	08:56:47	B - Shift 6A MON / 6P FRI	321 - EMS call, excluding vehicle accident with injury	None		
23-0000257	10:37:45	B - Shift 6A MON / 6P FRI	321 - EMS call, excluding vehicle accident with injury	None		
23-0000258	11:04:00	B - Shift 6A MON / 6P FRI	321 - EMS call, excluding vehicle accident with injury	None		
23-0000259	14:33:59	B - Shift 6A MON / 6P FRI	321 - EMS call, excluding vehicle accident with injury	None		
23-0000260	18:56:02	C - Shift 6P FRI / 6P SUN	321 - EMS call, excluding vehicle accident with injury	None		
23-0000261	21:42:04	C - Shift 6P FRI / 6P SUN	321 - EMS call, excluding vehicle accident with injury	None		
23-0000262	05:41:28		321 - EMS call, excluding vehicle accident with injury	None		
23-0000263	15:27:26	C - Shift 6P FRI / 6P SUN	321 - EMS call, excluding vehicle accident with injury	None		
23-0000266	21:44:01	A - Shift 6P SUN / 6A FRI	321 - EMS call, excluding vehicle accident with injury	None		
23-0000268	23:45:18		321 - EMS call, excluding vehicle accident with injury	None		
23-0000269	07:55:30	B - Shift 6A MON / 6P FRI	321 - EMS call, excluding vehicle accident with injury	None		
23-0000270	13:32:10	B - Shift 6A MON / 6P FRI	321 - EMS call, excluding vehicle accident with injury	None		
23-0000271	14:11:38	B - Shift 6A MON / 6P FRI	321 - EMS call, excluding vehicle accident with injury	None		
23-0000274	22:52:01	A - Shift 6P SUN / 6A FRI	321 - EMS call, excluding vehicle accident with injury	None		
23-0000275	00:19:14	A - Shift 6P SUN / 6A FRI	321 - EMS call, excluding vehicle accident with injury	None		
23-0000277	17:00:37	B - Shift 6A MON / 6P FRI	321 - EMS call, excluding vehicle accident with injury	None		

Basic Incident Number (FD1)	Basic Incident Actual Time	Basic Shift Or Platoon (FD1.30)	Basic Incident Type Code And Description (FD1.21)	Basic Aid Given Or Received (FD1.22)	Basic Aid Given Their Fire Department Name (FD1.23)	Total Incidents Percent of Incidents
23-0000278	19:21:39	A - Shift 6P SUN / 6A FRI	321 - EMS call, excluding vehicle accident with injury	None		
23-0000279	21:20:26	A - Shift 6P SUN / 6A FRI	321 - EMS call, excluding vehicle accident with injury	None		
23-0000280	23:03:31	A - Shift 6P SUN / 6A FRI	321 - EMS call, excluding vehicle accident with injury	None		
23-0000281	04:12:55	A - Shift 6P SUN / 6A FRI	321 - EMS call, excluding vehicle accident with injury	None		
23-0000282	07:15:24	B - Shift 6A MON / 6P FRI	321 - EMS call, excluding vehicle accident with injury	None		
23-0000283	09:27:43	B - Shift 6A MON / 6P FRI	321 - EMS call, excluding vehicle accident with injury	None		
23-0000284	11:06:28	B - Shift 6A MON / 6P FRI	321 - EMS call, excluding vehicle accident with injury	None		
23-0000285	13:24:28	B - Shift 6A MON / 6P FRI	321 - EMS call, excluding vehicle accident with injury	None		
23-0000287	00:09:20	A - Shift 6P SUN / 6A FRI	321 - EMS call, excluding vehicle accident with injury	None		
23-0000288	03:06:12	A - Shift 6P SUN / 6A FRI	321 - EMS call, excluding vehicle accident with injury	None		
23-0000289	08:33:49	B - Shift 6A MON / 6P FRI	321 - EMS call, excluding vehicle accident with injury	None		
23-0000290	09:39:47	B - Shift 6A MON / 6P FRI	321 - EMS call, excluding vehicle accident with injury	None		
23-0000293	13:00:40	B - Shift 6A MON / 6P FRI	321 - EMS call, excluding vehicle accident with injury	None		
23-0000294	13:34:46	B - Shift 6A MON / 6P FRI	321 - EMS call, excluding vehicle accident with injury	None		
23-0000296	02:36:50	C - Shift 6P FRI / 6P SUN	321 - EMS call, excluding vehicle accident with injury	None		
23-0000297	02:56:12	C - Shift 6P FRI / 6P SUN	321 - EMS call, excluding vehicle accident with injury	None		
23-0000298	18:07:04	C - Shift 6P FRI / 6P SUN	321 - EMS call, excluding vehicle accident with injury	Mutual aid received		
23-0000299	21:28:05	C - Shift 6P FRI / 6P SUN	321 - EMS call, excluding vehicle accident with injury	None		
23-0000302	12:48:07	C - Shift 6P FRI / 6P SUN	321 - EMS call, excluding vehicle accident with injury	None		
23-0000303	17:34:08	C - Shift 6P FRI / 6P SUN	321 - EMS call, excluding vehicle accident with injury	None		
23-0000307	07:50:53	B - Shift 6A MON / 6P FRI	321 - EMS call, excluding vehicle accident with injury	None		
23-0000309	15:17:27	B - Shift 6A MON / 6P FRI	321 - EMS call, excluding vehicle accident with injury	None		
23-0000312	11:34:13	B - Shift 6A MON / 6P FRI	321 - EMS call, excluding vehicle accident with injury	None		
23-0000313	13:29:53	B - Shift 6A MON / 6P FRI	321 - EMS call, excluding vehicle accident with injury	None		
23-0000315	23:42:01	A - Shift 6P SUN / 6A FRI	321 - EMS call, excluding vehicle accident with injury	None		
23-0000316	09:38:50	B - Shift 6A MON / 6P FRI	321 - EMS call, excluding vehicle accident with injury	None		
23-0000317	10:15:20	B - Shift 6A MON / 6P FRI	321 - EMS call, excluding vehicle accident with injury	None		
23-0000322	11:35:18	B - Shift 6A MON / 6P FRI	321 - EMS call, excluding vehicle accident with injury	Mutual aid received		
23-0000325	00:59:42	C - Shift 6P FRI / 6P SUN	321 - EMS call, excluding vehicle accident with injury	None		
23-0000326	17:31:40	C - Shift 6P FRI / 6P SUN	321 - EMS call, excluding vehicle accident with injury	None		
23-0000327	19:44:21	C - Shift 6P FRI / 6P SUN	321 - EMS call, excluding vehicle accident with injury	None		
23-0000329	09:16:36	C - Shift 6P FRI /	321 - EMS call, excluding	None		

Basic Incident Number (FD1)	Basic Incident Actual Time	Basic Shift Or Platoon (FD1.30)	Basic Incident Type Code And Description (FD1.21)	Basic Aid Given Or Received (FD1.22)	Basic Aid Given Their Fire Department Name (FD1.23)	Total Incidents Percent of Incidents
		6P SUN	vehicle accident with injury			
23-0000331	21:26:32	A - Shift 6P SUN / 6A FRI	321 - EMS call, excluding vehicle accident with injury	None		
23-0000332	22:12:22	A - Shift 6P SUN / 6A FRI	321 - EMS call, excluding vehicle accident with injury	None		
23-0000333	00:46:08	A - Shift 6P SUN / 6A FRI	321 - EMS call, excluding vehicle accident with injury	None		
23-0000335	12:06:14	B - Shift 6A MON / 6P FRI	321 - EMS call, excluding vehicle accident with injury	None		
23-0000340	09:50:52	B - Shift 6A MON / 6P FRI	321 - EMS call, excluding vehicle accident with injury	None		
23-0000341	16:21:04	B - Shift 6A MON / 6P FRI	321 - EMS call, excluding vehicle accident with injury	None		
23-0000346	15:46:51	B - Shift 6A MON / 6P FRI	321 - EMS call, excluding vehicle accident with injury	None		
23-0000348	20:50:40	A - Shift 6P SUN / 6A FRI	321 - EMS call, excluding vehicle accident with injury	None		
23-0000349	15:52:19	B - Shift 6A MON / 6P FRI	321 - EMS call, excluding vehicle accident with injury	None		
23-0000350	16:46:28	B - Shift 6A MON / 6P FRI	321 - EMS call, excluding vehicle accident with injury	None		
23-0000351	10:24:54		321 - EMS call, excluding vehicle accident with injury	None		
23-0000323	12:50:17	B - Shift 6A MON / 6P FRI	360 - Water & ice-related rescue, other	Mutual aid received		
23-0000347	19:40:02	A - Shift 6P SUN / 6A FRI	360 - Water & ice-related rescue, other	None		
						Total: 0.00%
Count: 98						
Incident Type Category (FD1.21): 4 - Hazardous Condition (No Fire)						
23-0000319	22:24:57	B - Shift 6A MON / 6P FRI	412 - Gas leak (natural gas or LPG)	None		
23-0000353	19:33:51	C - Shift 6P FRI / 6P SUN	412 - Gas leak (natural gas or LPG)	None		
23-0000337	22:48:07	A - Shift 6P SUN / 6A FRI	424 - Carbon monoxide incident	None		
						Total: 0.00%
Count: 3						
Incident Type Category (FD1.21): 5 - Service Call						
23-0000272	16:19:40		551 - Assist police or other governmental agency	None		
23-0000230	23:50:18	C - Shift 6P FRI / 6P SUN	571 - Cover assignment, standby, moveup	Mutual aid given	Wright-Tailmadge Fire Dept	
						Total: 0.00%
Count: 2						
Incident Type Category (FD1.21): 6 - Good Intent Call						
23-0000224	09:21:08	B - Shift 6A MON / 6P FRI	611 - Dispatched and cancelled en route	None		
23-0000308	14:57:03	B - Shift 6A MON / 6P FRI	611 - Dispatched and cancelled en route	None		
23-0000330	18:48:31	A - Shift 6P SUN / 6A FRI	611 - Dispatched and cancelled en route	Other aid given		
23-0000352	10:38:10	B - Shift 6A MON / 6P FRI	611 - Dispatched and cancelled en route	None		
23-0000250	06:04:06	B - Shift 6A MON / 6P FRI	6110 - Dispatched and cancelled en route (Medical)	None		
23-0000292	22:11:31	A - Shift 6P SUN / 6A FRI	6110 - Dispatched and cancelled en route (Medical)	None		
23-0000300	02:12:08	C - Shift 6P FRI / 6P SUN	6110 - Dispatched and cancelled en route (Medical)	None		
23-0000320	03:00:22	A - Shift 6P SUN / 6A FRI	6110 - Dispatched and cancelled en route (Medical)	None		

Basic Incident Number (FD1)	Basic Incident Actual Time	Basic Shift Or Platoon (FD1.30)	Basic Incident Type Code And Description (FD1.21)	Basic Aid Given Or Received (FD1.22)	Basic Aid Given Their Fire Department Name (FD1.23)	Total Incidents Percent of Incidents
23-0000328	01:33:31	C - Shift 6P FRI / 6P SUN	6110 - Dispatched and cancelled en route (Medical)	None		
23-0000334	09:29:16	B - Shift 6A MON / 6P FRI	6110 - Dispatched and cancelled en route (Medical)	None		
23-0000336	21:30:31	A - Shift 6P SUN / 6A FRI	6110 - Dispatched and cancelled en route (Medical)	None		
23-0000342	17:59:36	A - Shift 6P SUN / 6A FRI	6110 - Dispatched and cancelled en route (Medical)	None		
23-0000273	21:31:00	A - Shift 6P SUN / 6A FRI	6111 - Dispatched and cancelled en route (Fire Alarm)	None		
23-0000318	20:45:16	A - Shift 6P SUN / 6A FRI	6111 - Dispatched and cancelled en route (Fire Alarm)	None		
23-0000223	07:06:06	B - Shift 6A MON / 6P FRI	622 - No incident found on arrival at dispatch address	None		
23-0000225	09:55:54	B - Shift 6A MON / 6P FRI	622 - No incident found on arrival at dispatch address	None		
23-0000338	01:35:50	A - Shift 6P SUN / 6A FRI	622 - No incident found on arrival at dispatch address	None		
23-0000239	17:51:53	C - Shift 6P FRI / 6P SUN	651 - Smoke scare, odor of smoke	None		
23-0000305	15:37:52	B - Shift 6A MON / 6P FRI	651 - Smoke scare, odor of smoke	None		
23-0000311	21:19:10	A - Shift 6P SUN / 6A FRI	651 - Smoke scare, odor of smoke	None		
23-0000314	14:02:15	B - Shift 6A MON / 6P FRI	651 - Smoke scare, odor of smoke	Automatic aid given	Coopersville/Polkton Fire Dept.	
23-0000345	08:27:29	B - Shift 6A MON / 6P FRI	651 - Smoke scare, odor of smoke	Automatic aid received		
						Total: 0.00%
Count: 22						
Incident Type Category (FD1.21): 7 - False Alarm & False Call						
23-0000324	20:30:12	C - Shift 6P FRI / 6P SUN	700 - False alarm or false call, other	None		
23-0000245	20:02:22	A - Shift 6P SUN / 6A FRI	7001 - Dispatch Error (Never Dispatched)	None		
23-0000265	18:21:36		7001 - Dispatch Error (Never Dispatched)	None		
23-0000276	00:45:11	A - Shift 6P SUN / 6A FRI	7001 - Dispatch Error (Never Dispatched)	None		
23-0000291	12:03:35	A - Shift 6P SUN / 6A FRI	7001 - Dispatch Error (Never Dispatched)	None		
23-0000295	13:35:57	B - Shift 6A MON / 6P FRI	7001 - Dispatch Error (Never Dispatched)	None		
23-0000217	00:07:29	A - Shift 6P SUN / 6A FRI	743 - Smoke detector activation, no fire - unintentional	None		
23-0000286	16:39:31	B - Shift 6A MON / 6P FRI	745 - Alarm system activation, no fire - unintentional	None		
						Total: 0.00%
Count: 8						
Incident Type Category (FD1.21): 8 - Severe Weather & Natural Disaster						
23-0000354	23:09:46	C - Shift 6P FRI / 6P SUN	814 - Lightning strike (no fire)	Automatic aid given	Georgetown Township	
						Total: 0.00%
Count: 1						
						Total: 0.00%
Count: 141						

AFD Aid Given/Received Report

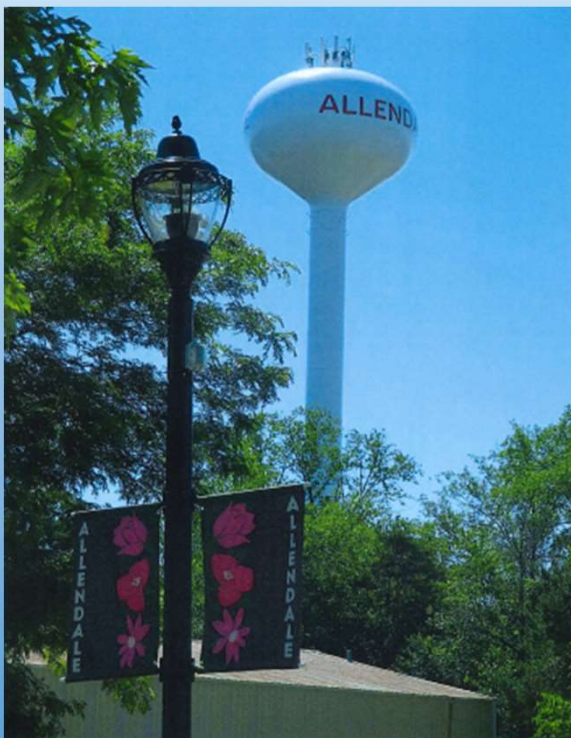
Incident Number	Basic Incident Date Time	Basic Incident Day Name (FD1.3)	Basic Incident Full Address	Aid Given Or Received	Automatic Aid Received Departments
Department Name: (None)					
23-0000298	03/18/2023 18:07:04	Saturday	11496 BOYNE Boulevard Allendale MI 49401	Mutual aid received	Wright-Tallmadge Fire Dept
23-0000310	03/21/2023 17:45:20	Tuesday	8795 FILLMORE Street Allendale MI 49401	Mutual aid received	Blendon Township Fire Dept
23-0000322	03/24/2023 11:35:18	Friday	11465 ROSEWOOD Avenue Allendale MI 49401	Mutual aid received	Grand Haven Township Fire/Rescue
23-0000323	03/24/2023 12:50:17	Friday	12451 60TH Avenue Allendale MI 49401	Mutual aid received	Grand Haven Township Fire/Rescue
23-0000330	03/26/2023 18:48:31	Sunday	66TH ST / LAKE EFFECT DR Graafschap MI 49423	Other aid given	
23-0000345	03/29/2023 08:27:29	Wednesday	78TH Avenue and LAKE MICHIGAN DR Allendale MI 49401	Automatic aid received	Robinson Township Fire Dept, Olive Township Fire Dept, Blendon Township Fire Dept
				Count: 6	
Department Name: Blendon Township Fire Dept					
23-0000339	03/28/2023 06:28:42	Tuesday	7137 54TH Avenue Hudsonville MI 49426	Automatic aid given	
				Count: 1	
Department Name: Coopersville/Polkton Fire Dept.					
23-0000220	03/02/2023 11:02:58	Thursday	68TH Avenue and GARFIELD ST Coopersville MI 49404	Mutual aid given	
23-0000314	03/22/2023 14:02:15	Wednesday	291 HENRY Street Allendale MI 49401	Automatic aid given	
23-0000344	03/29/2023 07:05:48	Wednesday	6601 LEONARD Street Allendale MI 49401	Automatic aid given	
				Count: 3	
Department Name: Georgetown Township					
23-0000354	03/31/2023 23:09:46	Friday	1028 ALLEN SPRINGS Lane Allendale MI 49401	Automatic aid given	
				Count: 1	
Department Name: Robinson Township Fire Dept					
23-0000252	03/08/2023 12:00:33	Wednesday	10781 SLEEPER Street Grand Haven MI 49417	Automatic aid given	
				Count: 1	
Department Name: Wright-Tallmadge Fire Dept					
23-0000230	03/03/2023 23:50:18	Friday	FENNESSY Drive and 4TH AVE Grand Rapids MI 49534	Mutual aid given	
23-0000306	03/21/2023 07:25:15	Tuesday	1176 LEONARD Street Allendale MI 49401	Automatic aid given	
23-0000321	03/24/2023 08:45:17	Friday	1810 LEONARD Street Grand Rapids MI 49534	Automatic aid given	
				Count: 3	
				Count: 15	

AFD NFIRS Run Data Report - Hour of Day

Hour of Day	Number of Runs
00:00:00 - 00:59:59	7
01:00:00 - 01:59:59	2
02:00:00 - 02:59:59	4
03:00:00 - 03:59:59	3
04:00:00 - 04:59:59	3
05:00:00 - 05:59:59	2
06:00:00 - 06:59:59	2
07:00:00 - 07:59:59	8
08:00:00 - 08:59:59	5
09:00:00 - 09:59:59	11
10:00:00 - 10:59:59	6
11:00:00 - 11:59:59	6
12:00:00 - 12:59:59	7
13:00:00 - 13:59:59	8
14:00:00 - 14:59:59	6
15:00:00 - 15:59:59	6
16:00:00 - 16:59:59	8
17:00:00 - 17:59:59	6
18:00:00 - 18:59:59	6
19:00:00 - 19:59:59	5
20:00:00 - 20:59:59	6
21:00:00 - 21:59:59	10
22:00:00 - 22:59:59	7
23:00:00 - 23:59:59	7
Total: 141	

ALLENDALE PUBLIC UTILITIES

2022 YEAR IN REVIEW



DEPARTMENT PERSONNEL



SUPERINTENDENT: Chad E. Doornbos

Licenses: Water Distribution "S-1"
Wastewater "A, B, C & D"



WATER SUPERVISOR: Garry Scholten, Jr.

Licenses: Water Distribution "S-2"
Wastewater "C & D"



WASTEWATER SUPERVISOR: Gary Nestle

Licenses: Water Distribution "S-4"
Wastewater "B,C,D"



PUBLIC UTILITY OPERATOR: Ryan Vander Ploeg

Licenses: Water Distribution "S-4"
Wastewater "C, D"



PUBLIC UTILITY OPERATOR: Rob Lamb

Licenses: Water Distribution "S-4"



PUBLIC UTILITY OPERATOR: Cody Brow



PUBLIC UTILITY OPERATOR: Mike Brummel



PUBLIC UTILITY OPERATOR: Shawn Hoover



UTILITY FIELD INSPECTOR: Jon Currier

Licenses: Water Distribution "S-4"



LAB TECHNICIAN: Tyler Vereeke

Licenses: Wastewater "D"



ASSISTANT MAINTENANCE TECHNICIAN: Sally Chase (Retired)



CUSTODIAL ASSISTANT: Brent Hotz (Transitioned to Maintenance Department)

OPERATIONS

The wastewater treatment plant is staffed from the hours of 7:00am to 4:00pm Monday through Friday. The schedule for the part-time staff varies. On weekends, one operator is on call and works both Saturday and Sunday performing daily required work which includes lab tests, recording meter readings, and checking on the many automated functions of the wastewater plant to ensure proper operation. The operator is also available twenty-four (24) hours a day for emergency calls for the following week. These emergency call-outs/after hour events can range anywhere from a Miss Dig to a very complex issue such as a lift station failure or a watermain break. All of our critical points are monitored by an alarm system which will alert the on-call person via text and email to their phone.

There are five major components of the water and sewer department. They consist of the water distribution system, the wastewater treatment plant, the sewer collection system, construction projects and Miss Digs. I will discuss each of these in the following paragraphs in more detail.

First, the water distribution system consists of 69.5 miles of water main, the appurtenances, two water towers, two pumping stations and two pressure reducing valve buildings. Three times per month water samples from various distribution points are tested for chlorine residual and taken to the City of Grand Rapids Lake Michigan Filtration Plant for bacterial analysis. For our valve exercising and hydrant flushing program, we have broken the township into seven quadrants. Each year we attempt to complete one to two quadrants. This ensures that valves and hydrants are working in an emergency situation. We are also required by the EGLE to have a Lead and Copper and Cross Connection Control Program.

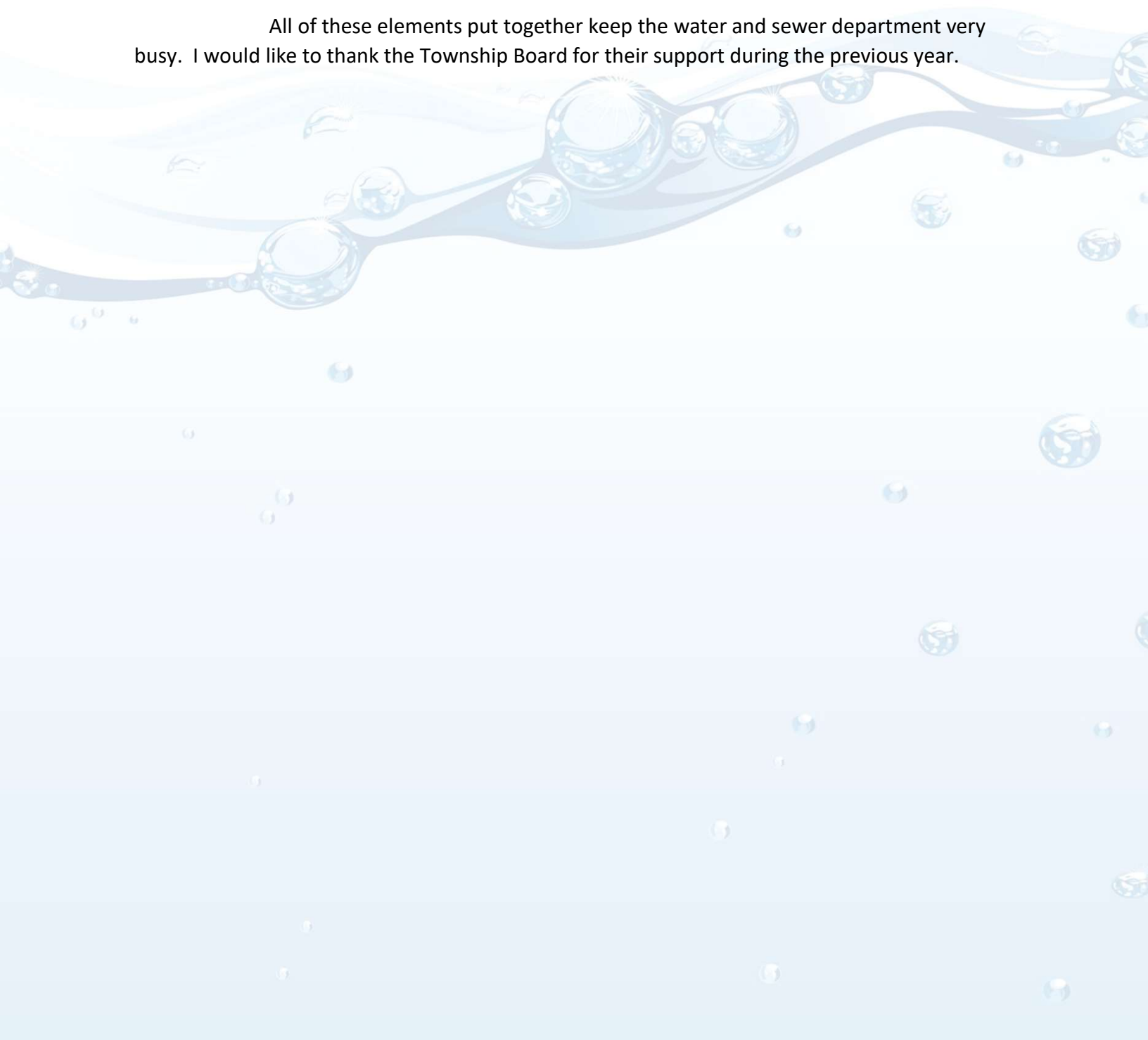
Second is the wastewater side of the operations. There are many things that are going on here also. We treat approximately 1.35 million gallons of sewage daily. This is no easy task considering all the equipment involved and the maintenance that goes along with it. In order for us to meet our discharge limits, we have to treat the sewage to limits set by EGLE. On a daily basis we test for chlorine residual, total coliforms, pH, dissolved oxygen, suspended and volatile solids, phosphates, and biochemical oxygen demand. As part of the treatment process, we also operate an Anaerobic Digester. We are able to generate biogas through this process to reheat the digester. As part of our permit, we are required to have an Industrial Pretreatment Program. This program allows us to monitor our industrial sites for compliance to State and Federal regulations for wastewater that is discharged to our facility or under our permit. Allendale currently have two facilities under our Industrial Pretreatment.

A third component of our operations is the collection system for the sewage. We currently have seven lift stations. Each lift station has two pumps to give redundancy. There is also 49.8 miles of sewer main that we are responsible for. The Township is currently split into six quadrants and we inspect one quadrant per year. This helps us identify any problems that may be occurring within the pipes and manholes.

Fourth, there is the construction aspect of the department. We work alongside Fleis and Vandenbrink from the start of a project to the end of a project. The work that is performed here consists of reviewing projects so they will conform to the Allendale construction requirements, inspection as the project is being installed, and final completion inspections to ensure that the township does not have to go back and do repairs on sub-par construction practices.

And the fifth and final aspect of the department is the Miss-Digs. This is the marking of our utilities so they do not get hit in the excavation phase of construction. As part of this, there is the ongoing mapping of our water system. This is done through GPS to pinpoint our utilities and get them onto the GIS system that we will be transitioning to. Our sewer system is already in the GIS system thanks to the work done for the SAW Grant.

All of these elements put together keep the water and sewer department very busy. I would like to thank the Township Board for their support during the previous year.



ALLENDALE PUBLIC UTILITIES

2022 YEAR IN REVIEW

2022 was another year of changes in the utility department. Sally Chase, our Assistant Maintenance Technician, retired after 30 years of service. We would like to thank her for her many years of service to the Public Utility Department. A second staff move was having Brent Hotz move to the Maintenance Department.

The WRRF staff spent much of the year refining treatment processes and monitoring our supplies of PPE and chemicals. With supply chain interruptions, we have had to order our supplies and chemicals far in advance to ensure we would have them when necessary. While looking at reducing the cost of our chemicals, we continued working with ferric chloride for our phosphorus and hydrogen sulfide removal and poly alum for secondary settling. Maintenance at the facility was generally routine with no major issues this year. There were no discharge violations for the water resource recovery facility.

Work on the park lift station and water tower area was completed in 2022. The lift station work includes a replacement generator, a new control building, and the moving of the controls from the bottom of the can lift station to the new control building. This will give our staff protection from the weather when working on the electrical controls. A second part to this project is securing the water tower. This entailed obtaining some additional property and new fencing in the area around the water tower and lift station. We would like to give a special thank you to the DDA for their support in this project.

Lead and Copper is still a focal point in the drinking water world. As part of the Lead and Cooper Program, we are required to do a service line inventory of our system. This entails exposing the service line and taking pictures. This project is to be completed by 2025. As most of our system was put in after 1986, we do not have any lead service lines in the ground but are still required to do the inventory. We completed approximately one third (1/3) of the required amount in 2022. We continue to do monthly bac-t samples and disinfection byproducts sampling. All of this sampling was accomplished on time and there were no violations.

The Township purchases fully treated water from the City of Grand Rapids. In 2022, we purchased 728 million gallons which is a 3.49% decrease to the year 2021. In looking at the growth of the township over the last ten (10) years, we have seen the demand for water increase 27.6%. This coincides with the approximate population growth of 25%. Of the 728 million gallons of water that was purchased, 425 million gallons was returned and treated at the WRRF. This reflects a 1.33% decrease from 2021. See Appendix A. Appendix B shows the township water usage that is reported on our Pumpage Report.

Construction year 2021 saw the completion of one project. This project was the extension of a fire protection line. The chart shown in Appendix C reflects the annual developer contribution to the overall assets of the Public Utility Department.

In looking at water meters and customer accounts, it was reported that the water department installed 110 new meters and had 41 retrofits/repairs. With the interruption in the supply chain, we were forced to suspend our retrofitting program in lieu of new installs and repairs.

In reviewing the financials for the department, the year 2022 saw an increase to our overall cash funds in the amount of \$1,741,080. The available cash on hand is \$8,724,817. As we continue working through our capital improvement projects, we will have funds available to pay cash for some of these projects. At the end of 2022 the dept for water and sewer is \$7,219,683 million spread over two water bonds at \$1,119,483 and two sewer bonds at \$6,100,200.

In closing out 2022, we are continuing to plan for the expansion of the WRRF and the relocation of the trunk sewer line from Grand Valley State University. As disposal of biosolids continues to be a concern as we move into the future, we are continuing to look for new and innovative ways to manage the bio-solids from the process. The goal of the utilities is to provide safe drinking water to our residents and protect the environment through the treatment of wastewater.

The safety program is continuing to stay strong as we strive to make Allendale Township a safe place to work. We are satisfying all the requirements for OSHA required safety trainings. In 2022 there was one (1) reportable injury. Thank you to all of those who set up our trainings, hold us to a higher expectation, and everyone who follows the safety rules to make Allendale Public Utilities a safe place to work.

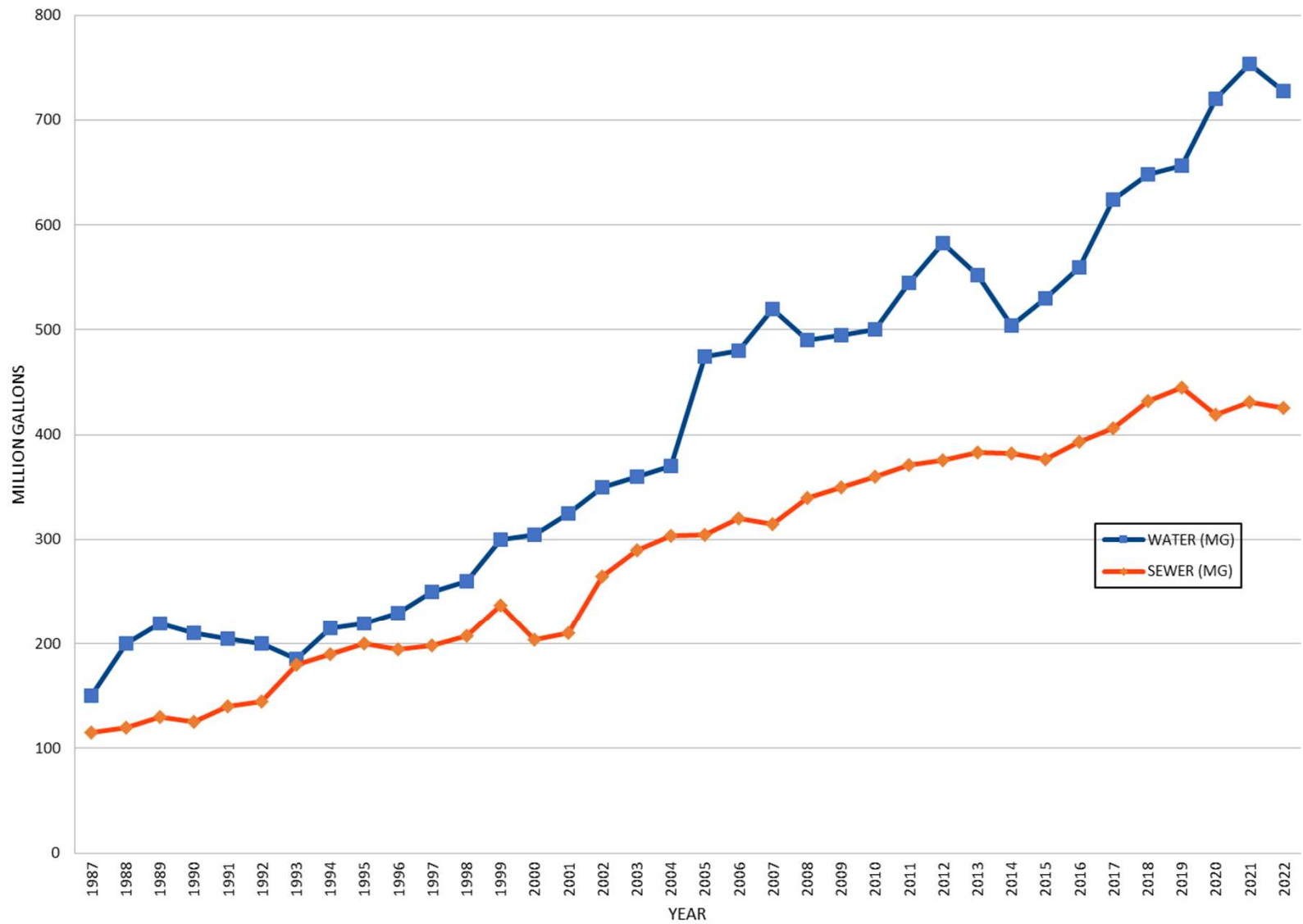
Appendix E shows our current treatment process at the WRRF. The second picture in the appendix shows the different sampling points. Appendix F reflects the Nereda Process that we are engineering for the new treatment process. Appendix G shows the location of the sewer relocation project. We will be removing a sewer line from a storm drain and relocating it in the median of Lake Michigan Drive. This will consist of two (2) lift stations, force main, and gravity sewer to the WRRF. In 2022, we made the Clean Water State Revolving Fund list. This accelerated us into the final design of the WRRF improvements and the collection system improvements.

APPENDIX A

Allendale Water and Sewer Flows

YEAR	WATER (MG)	% Change	SEWER (MG)	% Change
1987	150		115	
1988	200		120	
1989	220		130	
1990	210		125	
1991	205		140	
1992	200		145	
1993	185		180	
1994	215		190	
1995	220		200	
1996	230		195	
1997	250		198	
1998	260		208	
1999	300		237	
2000	305		204	
2001	325		210	
2002	350		265	
2003	360		290	
2004	370		304	
2005	475		305	
2006	480		320	
2007	520		315	
2008	490		340	
2009	495		350	
2010	500		360	
2011	545		371	
2012	583		376	
2013	552		383	
2014	504		382	
2015	530		377	
2016	560		393	
2017	624		406	
2018	648		432	
2019	656.607	1.31	444.5803	2.83
2020	719.944	8.80	419.1976	-6.06
2021	753.462	4.45	430.9980	2.74
2022	728.044	-3.49	425.3428	-1.33

ALLENDALE WATER AND SEWER FLOWS (MG)



APPENDIX B

MICHIGAN DEPARTMENT OF ENVIRONMENTAL QUALITY
OFFICE OF DRINKING WATER AND MUNICIPAL ASSISTANCE
**ANNUAL PUMPAGE/USAGE REPORT FOR COMMUNITY WATER
SUPPLY**



Issued under authority of 1976 PA 399, MCL 325.1001 *et al.*, and Administrative Rules, as amended.
Failure to submit this form is a violation of Act 399 and may subject the water supply to enforcement penalties.

Administrative Rule R 325.11504 states in part that "...each Type I public water supply which does not submit a monthly operation report shall submit an annual report ... of water pumpage and water use." Complete this form and return it to the appropriate Department of Environmental Quality district office **by March 31** following the year covered by the report. For district office addresses, visit www.michigan.gov/deq and click on Locations. Add additional sheets as needed.

Water Supply: Allendale Charter Township WSSN: 00127 County: Ottawa

MONTHLY PUMPAGE/USAGE

Calendar Year <u>2022</u>	Well No. _____ Capacity in gpm _____	Well No. _____ Capacity in gpm _____	Well No. _____ Capacity in gpm _____	Well No. _____ Capacity in gpm _____	Total Monthly Pumpage/Usage <input checked="" type="checkbox"/> in million gallons <input type="checkbox"/> in gallons
JANUARY					46.970
FEBRUARY					46.051
MARCH					47.147
APRIL					48.566
MAY					57.810
JUNE					85.884
JULY					101.275
AUGUST					83.557
SEPTEMBER					72.150
OCTOBER					52.772
NOVEMBER					45.003
DECEMBER					40.859

Comments: _____

Total Yearly Pumpage/Usage 728.044

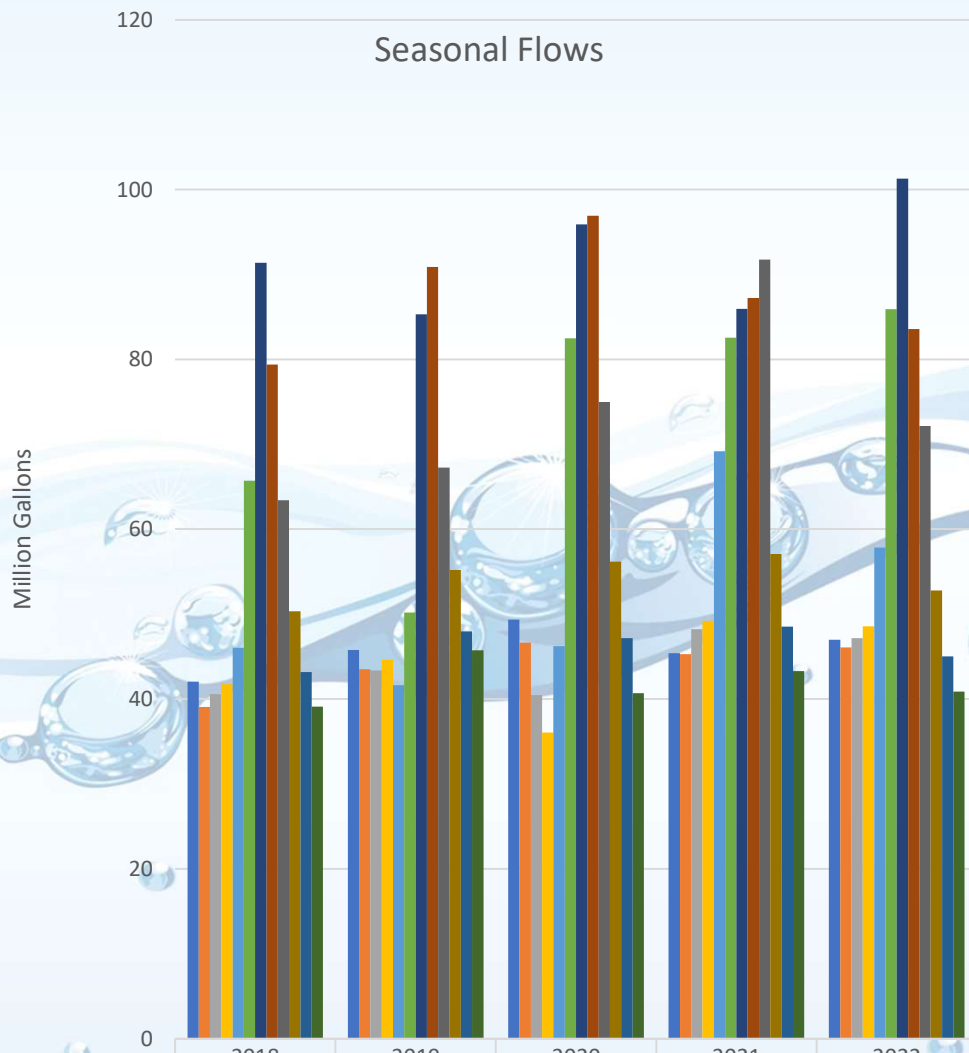
Average Daily Pumpage/Usage
(Total Yearly Pumpage / 365) 1.995

Maximum Daily Pumpage And Date 5.248 6/16/2022
Pumpage Date

Minimum Daily Pumpage And Date 0.77 9/28/2022
Pumpage Date

Name/Title: Chad E. Doornbos Superintendent of Public Utilities	
Signature: <u>Chad E. Doornbos</u>	Date: February 2, 2023

Seasonal Flows



	2018	2019	2020	2021	2022
January	42.034	45.749	49.352	45.391	46.970
February	39.047	43.495	46.634	45.261	46.051
March	40.545	43.365	40.446	48.195	47.147
April	41.743	44.600	36.051	49.188	48.566
May	46.035	41.634	46.226	69.169	57.810
June	65.690	50.173	82.476	82.534	85.884
July	91.364	85.308	95.873	85.919	101.275
August	79.363	90.872	96.915	87.211	83.557
September	63.403	67.249	74.978	91.752	72.15
October	50.310	55.191	56.175	57.056	52.772
November	43.168	47.945	47.168	48.509	45.003
December	39.104	45.737	40.690	43.277	40.859

ALLENDALE PUBLIC UTILITIES

2022 Water and Sewer Main Installation Totals

2021 System Total: Watermain = 366,750 ft 69.46 Miles

Sewer Main = 262,930 ft 49.80 Miles

WATERMAIN

Pipe Value per Foot 8"= \$70.00 /ft 10" = \$90.00 /ft
 12"= \$100.00 /ft 16" = \$120.00 /ft

Project	8"	Value	12"	Value	16"	Value	Project Total	Bill of sale or Record Drawings Received
M&S Storage Phase II	339	\$23,730.00					\$23,730.00	
				\$0.00			\$0.00	
				\$0.00			\$0.00	
							\$0.00	
							\$0.00	
							\$0.00	
Totals:	339	\$23,730.00	0	\$0.00			\$23,730.00	

SEWER MAIN

Pipe Value per Foot 8"= \$80.00 /ft 15" = \$130.00 /ft
 10" = \$90.00 /ft 18" = \$140.00 /ft
 12" = \$110.00 /ft 21" = \$155.00 /ft

Project	8"	Value	10"	Value	12"	Value	Project Total	Bill of sale or Record Drawings Received
		\$0.00					\$0.00	
Totals:	0	\$0.00	0	\$0.00			\$0.00	

2022 System Total: Watermain = 367,089 ft 69.52 Miles

Sewer Main = 262,930 ft 49.80 Miles

APPENDIX C

APPENDIX D

WATER AND SEWER OPERATING CASH BALANCES

YEAR	BALANCE
2009	\$1,029,943
2010	\$1,557,530
2011	\$1,689,081
2012	\$2,120,364
2013	\$2,215,929
2014	\$2,891,507
2015	\$3,592,282
2016	\$2,220,351
2017	\$2,693,220
2018	\$4,109,301
2019	\$4,092,256
2020	\$5,635,256
2021	\$6,983,737
2022	\$8,724,817





APPENDIX E

Leprino Lagoon #1

Step 1. Flow enters the headworks bldg. where it is screened and grit is removed.

Step 2. The flow is measured at the Parshall flume and sampled at the Influent sampler. Ferric Chloride is added at this point. The flow then proceeds to the Primary Clarifiers

Primary Anaerobic Digester

Digester Mixer Bldg.

Secondary Digester. After digestion, residual biosolids are pumped and stored in either the West or East sludge lagoon.

Digester Boiler Bldg.

Digester Flare

Step 3. The flow is then split between 4 Primary Clarifiers. Primary sludge is sent to the anaerobic digesters

Step 4. After clarification a primary sample is taken

Step 5. Biological treatment through 4 trains of 2 RBC's

Step 6. Secondary Clarification. Secondary sludge is pumped to the headworks and settles with primary sludge

Step 7. A Secondary sample is taken

Step 8. Chlorination Chamber via stabilized 3" chlorine pucks

West Sludge Lagoon. This pond is clay lined and decant discharges to a wet well and is recycled to the front of the plant.

East Sludge Lagoon. This pond is clay lined and decant discharges to a wet well and is recycled to the front of the plant.

Sludge Lagoon Outfall

Leprino Sampler Outfall

Leprino Parshall Flume

Dechlorination Pond

Step 9. Chlorine contact

Step 10. The flow is dechlorinated with sodium bisulfite

Bypass dechlorination pond

Step 11. At this point the flow is combined with the Leprino flow and directly discharges. It is sampled at the Combined Final Sampler and flow is monitored through a rectangular notch wier and then discharges to Outfall 001

Leprino Lagoon #2

Outfall Discharge To Grand River





APPENDIX F



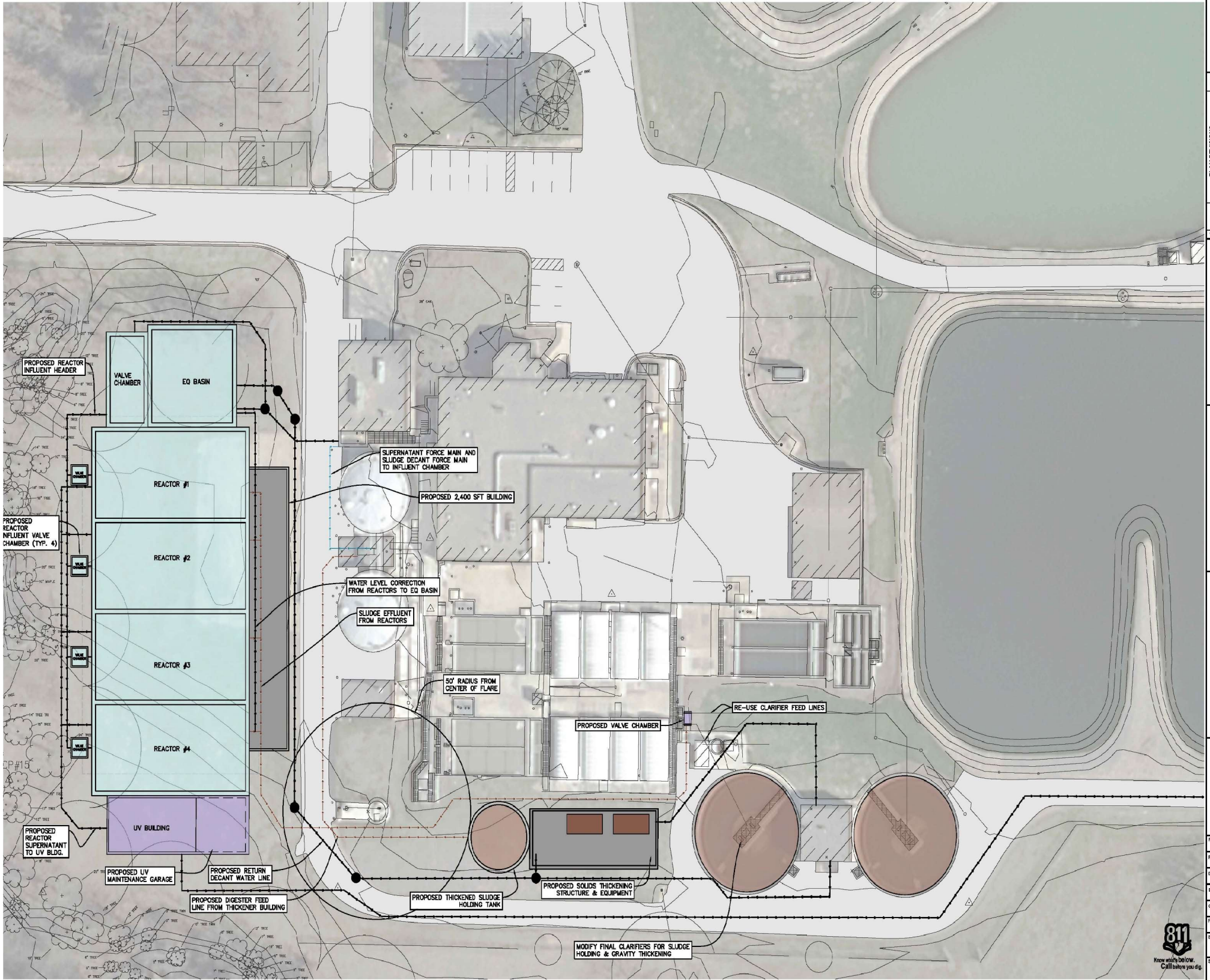
Moore+Bruggink
Consulting Engineers
2020 Monroe Ave.
Grand Rapids, MI 49505
(616) 363-9801 mailbox@mbcoe.com



**AQUA NEREDA CONCEPTUAL
EVALUATION**
FOR THE
ALLENDALE CHARTER TOWNSHIP WWTP
OTTAWA COUNTY, MICHIGAN

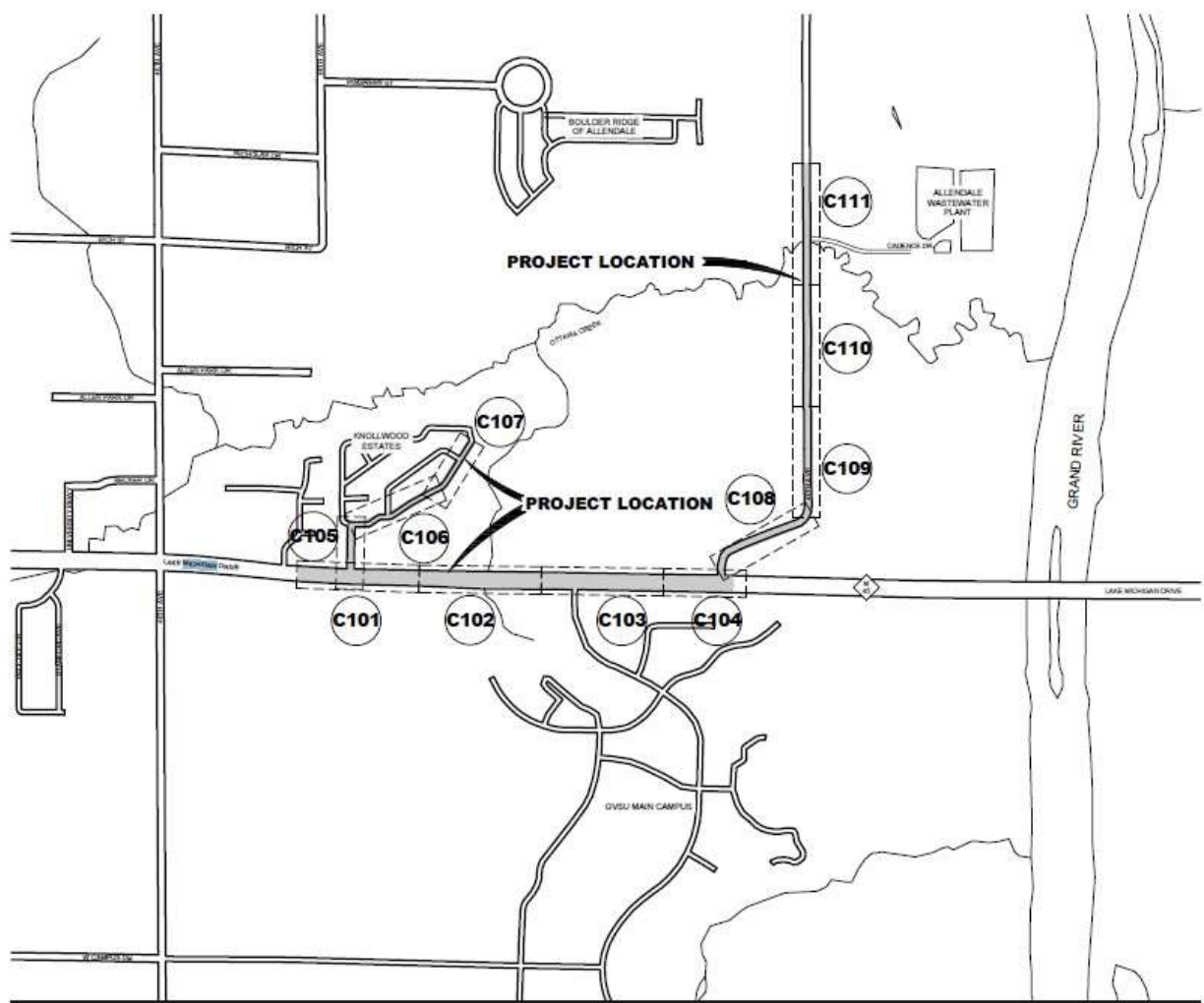
CONCEPTUAL SITE LAYOUT

FIELD SURVEY / DATE
N/A
PROJECT NO.: 220° 63.01
DESIGN DRAWN BY: TC
DESIGNED BY: B.J.H. / KSP
CHECKED BY: B.J.H.
PLAN DATE: 1/12/23
SHEET DESCRIPTION: C-1
SHEET NUMBER: 1 OF 2





APPENDIX G



LOCATION MAP

RESOLUTION 2023-07

At a regular meeting of the Township Board of the Charter Township of Allendale, Ottawa County, Michigan, held at the Township Hall at 6676 Lake Michigan Drive, Allendale Charter Township, Ottawa County, Michigan, on May 8, at 6:00 p.m., local time.

Present:

Absent:

Vacant Seat: One (1)

STATEMENT OF PURPOSE AND NECESSITY AND AUTHORIZATION TO COMMENCE EMINENT DOMAIN PROCEEDINGS

(Sun Communities, LLC, fee title and easement)

WHEREAS, Allendale Charter Township (the “**Township**”) maintains a sanitary sewer system providing services within the Township, including services to Grand Valley State University (“**GVSU**”) and Sun Knollwood LLC c/k/a Knollwood Mobile Home Park, of 4595 Knollwood Dr, Allendale Charter Twp, MI 49401 (the “**Park**”).

WHEREAS, that portion of the sanitary sewer providing services to GVSU, the Park, and neighboring properties (the “**System**”) is aging and has experienced a variety of expensive repairs in recent years.

WHEREAS, a portion of the System is located within a steep ravine waterway adjacent to the Park, is subject to erosion, and presents potential environmental hazards.

WHEREAS, the Township, in conjunction with the Township’s engineers, has developed detailed plans and specifications to abandon portions of the System and replace them with an improved system.

WHEREAS, the Township, in conjunction with the Township’s engineers, has determined that it is necessary and essential to the public health, safety and welfare to abandon the 12-inch pressure sewer that currently serves GVSU, the Park, and several other sewer customers in the Township, and replace components of the System with a sanitary sewer lift station within the Park, a 4-inch force sanitary sewer main, and 8-inch gravity sewer (the “**Project**”).

WHEREAS, the Project will also include repaving approximately 1700 feet of roadway where construction will occur in the Park.

WHEREAS, the Project is scheduled to commence in 2024 after years of costly sewer maintenance and multiple studies to determine the best long-term solution.

WHEREAS, the Township Board has approved the Project and has obtained funding for the Project.

WHEREAS, construction of the Project will require that the Township obtain fee title to certain real property within the Park for construction of a lift station, permanent easement interests for the sanitary sewer lines and related utilities, and temporary easements for construction and storage of machinery, equipment, materials, and soil during construction; and to allow temporary occupancy by utilities, contractors, and others, together with re-grading and restoration upon completion of the Project (the “**Work.**”).

WHEREAS, the attached Exhibit A identifies the preliminary legal description, which will be substantially and materially similar to the final legal description, for the permanent easement area to be acquired from the Park, a 20’-wide permanent utility easement within and along Knollwood Drive and Kistler Drive, for construction of the new sanitary sewer line and related utilities.

WHEREAS, that portion of the attached Exhibit B labeled “easement description” identifies the parcel of land to be acquired from the Park, commonly known as “Lot 61” of the Park, for construction of the lift station as part of the Project.

WHEREAS, obtaining fee title to Lot 61 will require the relocation of one mobile home and its occupants.

WHEREAS, the attached Exhibit C identifies the temporary easement area for the Work.

WHEREAS, the interests in real property identified in Exhibits A, B, and C are hereinafter cumulatively referred to as the “**Interests**”.

NOW, THEREFORE BE IT RESOLVED, by virtue of the authority vested by law, Allendale Charter Township, Ottawa County, Michigan, a Michigan charter township:

1. DECLARES AND DETERMINES that it is necessary to construct the Project, including without limitation the design, construction, maintenance, repair and expansion of the sanitary sewer system within the Park.

2. IT IS FURTHER DECLARED AND DETERMINED that the Project is necessary for the use and benefit of the public, to promote and protect the public health, safety and welfare, and to update and improve an aging and repair-prone sanitary sewer system.

3. IT IS FURTHER DECLARED AND DETERMINED that it is necessary to acquire and take the Interests for the purposes of the Work and Project.

4. IT IS FURTHER DECLARED AND DETERMINED that a good-faith written offer to purchase the Interests from the Park for FORTY THOUSAND FIVE HUNDRED AND NO/100 DOLLARS (\$40,500.00) has been made by the Township to the Park, in accordance with the requirements of

1980 PA 87, as amended, and that the offer of just compensation was not accepted by such owners.

5. IT IS FURTHER DECLARED AND DETERMINED that the schedule for the Project and Work requires the immediate acquisition of the Interests to allow the Project and Work to proceed.

6. IT IS FURTHER DECLARED AND DETERMINED that the Declaration of Taking attached as Exhibit D is approved and that the Township Supervisor and Clerk are authorized and directed to execute and record such instrument in accordance with 1980 PA 87, as amended.

7. IT IS FURTHER DECLARED AND DETERMINED that the Township Attorney is authorized and directed to institute condemnation proceedings, under 1980 PA 87, as amended, against the owners and any other parties having an interest in the Interests, to acquire the Interests, and take all required and appropriate actions in such proceedings, including without limitations acts to give actual physical possession of the Interests as soon as possible.

8. IT IS FURTHER DECLARED AND DETERMINED THAT the Township shall take all actions required by Michigan law to provide for relocation of the occupants of the real property identified in Exhibit A, including without limitation provision of such financial assistance and comparable replacement dwelling as may be necessary and required under Michigan law.

9. IT IS FURTHER DECLARED AND DETERMINED THAT all resolutions in conflict herewith in whole or in part are hereby revoked to the extent of such conflict.

YEAS:

NAYS:

ABSENT:

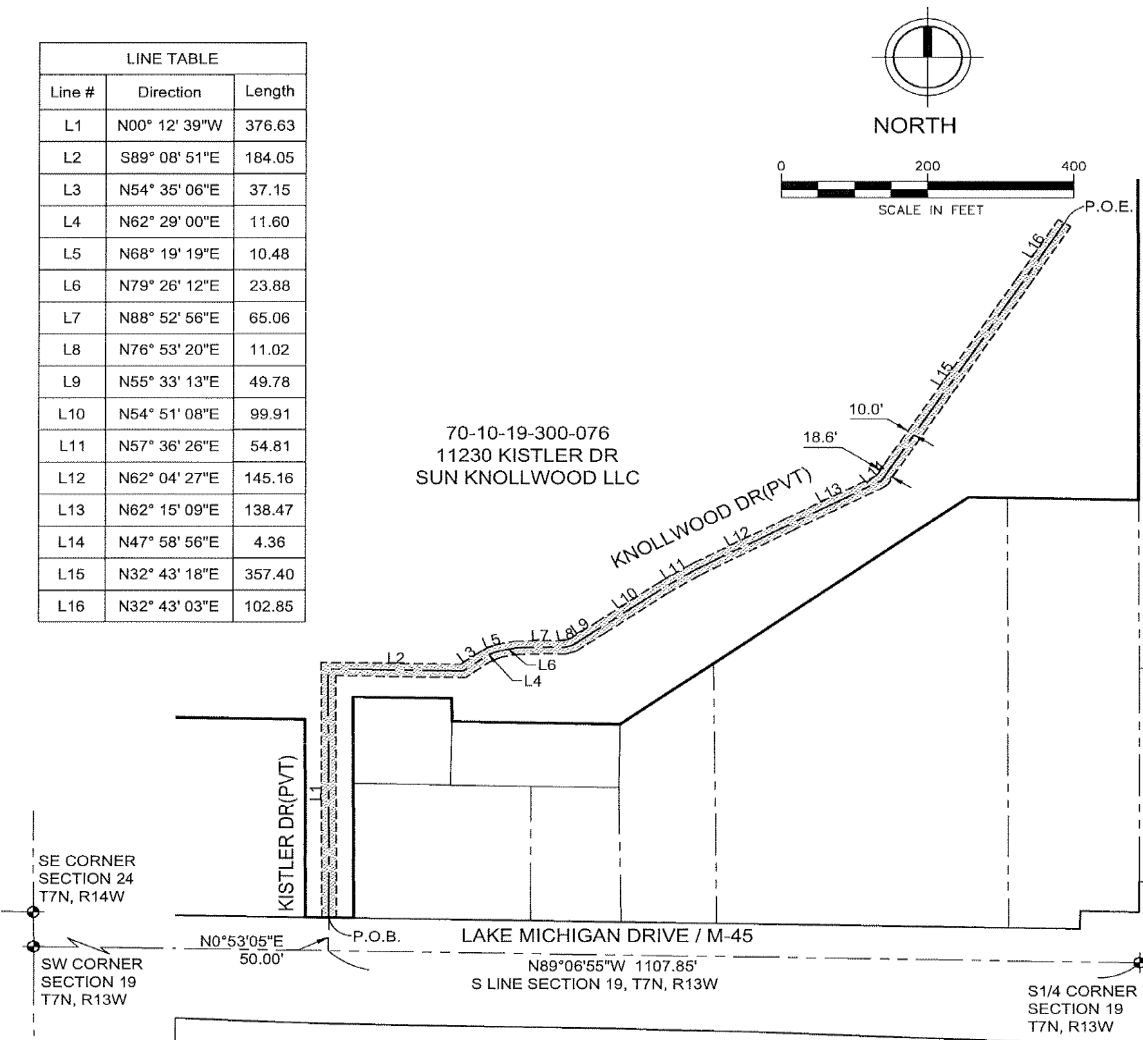
VACANT SEAT: One (1)

Resolution declared adopted on May 8, 2023.

Jody L. Hansen
Allendale Charter Township Clerk

Adam Elenbaas
Allendale Charter Township Supervisor

LINE TABLE		
Line #	Direction	Length
L1	N00° 12' 39"W	376.63
L2	S89° 08' 51"E	184.05
L3	N54° 35' 06"E	37.15
L4	N62° 29' 00"E	11.60
L5	N68° 19' 19"E	10.48
L6	N79° 26' 12"E	23.88
L7	N88° 52' 56"E	65.06
L8	N76° 53' 20"E	11.02
L9	N55° 33' 13"E	49.78
L10	N54° 51' 08"E	99.91
L11	N57° 36' 26"E	54.81
L12	N62° 04' 27"E	145.16
L13	N62° 15' 09"E	138.47
L14	N47° 58' 56"E	4.36
L15	N32° 43' 18"E	357.40
L16	N32° 43' 03"E	102.85



PARCEL TAX DESCRIPTION:

SE 1/4 OF SW 1/4 EXC M-45, ALSO EXC COM 700 FT N OF SE COR, TH W 231.92 FT, TH S 53D 20M 12S W 586.04 FT, S 100 FT, W 230 FT, N 135 FT, W 135 FT, S 335 FT TO N LI M-45, TH E 1070 FT, TH N 650 FT TO BEG, ALSO EXC S 300 FT OF W 184 FT LYING N OF AND ADJ TO N'LY LI M-45. SEC 19 T7N R13W

EASEMENT DESCRIPTION:

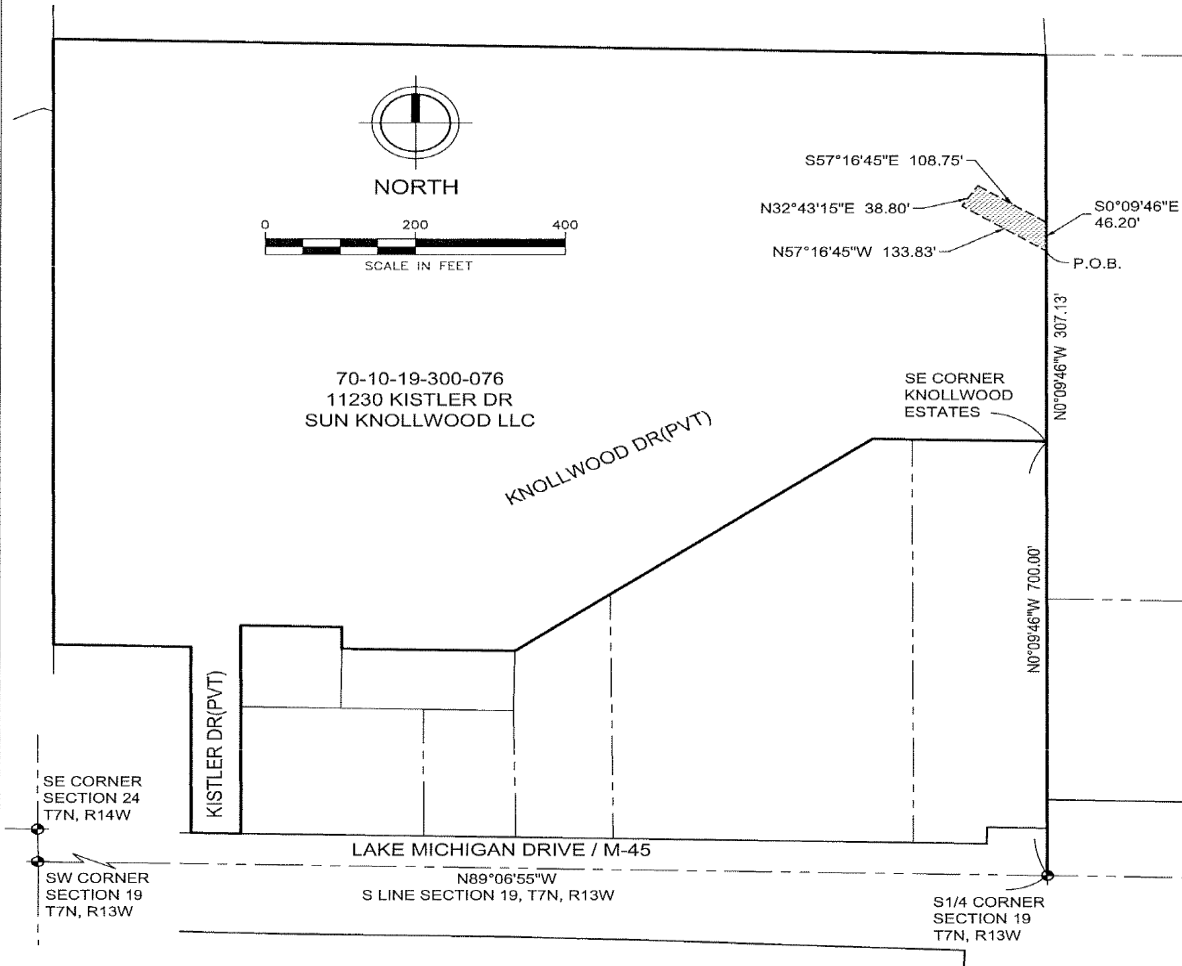
A 20.00 FOOT WIDE EASEMENT BEING 10.00 FEET IN EVEN WIDTH ON EACH SIDE OF THE FOLLOWING DESCRIBED CENTERLINE BEING PART OF SECTION 19, TOWN 7 NORTH, RANGE 13 WEST, ALLENDALE CHARTER TOWNSHIP, OTTAWA COUNTY, MICHIGAN MORE PARTICULARLY DESCRIBED AS: COMMENCING AT THE SOUTH 1/4 CORNER OF SAID SECTION; THENCE N89°06'55"W 1107.85 FEET ALONG THE SOUTH LINE OF SAID SECTION 19; THENCE N00°53'05"E 50.00 FEET TO THE NORTH LINE OF LAKE MICHIGAN DRIVE(M-45) AND THE POINT OF BEGINNING; THENCE N00°12'39"W, 376.63 FEET; THENCE S89°08'51"E, 184.05 FEET; THENCE N54°35'06"E, 37.15 FEET; THENCE N62°29'00"E, 11.60 FEET; THENCE N68°19'19"E, 10.48 FEET; THENCE N79°26'12"E, 23.88 FEET; THENCE N88°52'56"E, 65.06 FEET; THENCE N76°53'20"E, 11.02 FEET; THENCE N55°33'13"E, 49.78 FEET; THENCE N54°51'08"E, 99.91 FEET; THENCE N57°36'26"E, 54.81 FEET; THENCE N62°04'27"E, 145.16 FEET; THENCE N62°15'09"E, 138.47 FEET; THENCE N47°58'56"E, 4.36 FEET; THENCE N32°43'18"E, 357.40 FEET; THENCE N32°43'03"E, 102.85 FEET TO THE POINT OF ENDING.

DATE: 8/17/2022
F&V PROJECT NO.
853271

FLEIS&VANDENBRINK
DESIGN. BUILD. OPERATE.

2960 Lucerne Drive SE
Grand Rapids, MI 49546
P: 616.977.1000
F: 616.977.1005

EXHIBIT A
SECTION 19, T7N, R13W
OTTAWA CO, MICHIGAN
ALLENDALE CHARTER TOWNSHIP
70-10-19-300-076 / 11230 KISTLER DR



PARCEL TAX DESCRIPTION:

SE 1/4 OF SW 1/4 EXC M-45, ALSO EXC COM 700 FT N OF SE COR, TH W 231.92 FT, TH S 53D 20M 12S W 586.04 FT, S 100 FT, W 230 FT, N 135 FT, W 135 FT, S 335 FT TO N LI M-45, TH E 1070 FT, TH N 650 FT TO BEG, ALSO EXC S 300 FT OF W 184 FT LYING N OF AND ADJ TO N'LY LI M-45. SEC 19 T7N R13W

EASEMENT DESCRIPTION:

PART OF SECTION 19, TOWN 7 NORTH, RANGE 13 WEST, ALLENDALE CHARTER TOWNSHIP, OTTAWA COUNTY, MICHIGAN MORE PARTICULARLY DESCRIBED AS:
COMMENCING AT THE SOUTH 1/4 CORNER OF SAID SECTION; THENCE N00°09'46\"W 700.00 FEET TO THE SOUTH EAST MOST CORNER OF KNOLLWOOD ESTATES MOBILE HOME PARK; THENCE CONTINUING N00°09'46\"W 307.13 FEET ALONG THE EAST LINE OF SAID PARK TO THE POINT OF BEGINNING; THENCE N57°16'45\"W 133.83 FEET; THENCE N32°43'15\"E 38.80 FEET; THENCE S57°16'45\"E 108.75 FEET TO THE EAST LINE OF SAID PARK; THENCE S00°09'46\"E 46.20 FEET TO THE POINT OF BEGINNING.
SAID PARCEL CONTAINS 4,705 SQUARE FEET WHICH IS 0.11 ACRES OF LAND MORE OR LESS

DATE: 8/17/2022
F&V PROJECT NO.
853271

FLEIS&VANDENBRINK
DESIGN. BUILD. OPERATE.

2960 Lucerne Drive SE
Grand Rapids, MI 49546
P: 616.977.1000
F: 616.977.1005

EXHIBIT B
SECTION 19, T7N, R13W
OTTAWA CO, MICHIGAN

ALLENDALE CHARTER TOWNSHIP
70-10-19-300-076 / 11230 KISTLER DR

EXHIBIT C



EXHIBIT D

DECLARATION OF TAKING

(Sun/Knollwood, Fee and Easements)

WHEREAS, the Township Board of Spring Lake Township has by Resolution made a Statement of Purpose and Necessity and Authorization to Commence Eminent Domain Proceedings stating the purpose and the public necessity for the abandonment of a the 12-inch pressure sewer that currently serves Grand Valley State University (“GVSU”) and Sun Knollwood LLC c/k/a Knollwood Mobile Home Park, of 4595 Knollwood Dr, Allendale Charter Twp, MI 49401 (the “Park”) and several other sewer customers in the Township, and replace components of the sanitary sewer system with a sanitary sewer lift station within the Park, a 4-inch force sanitary sewer main, and 8-inch gravity sewer (the “Project”); and stating that it was necessary to acquire fee title, permanent easement rights, and temporary easement rights in and over a portion of private lands necessary for the location and construction of the Project; and stating that a good-faith written offer of just compensation to purchase the real property interests for the Project was not accepted by the Park, the owner of such interests; and authorizing the execution and recording of this Declaration of Taking; now therefore,

IT IS DECLARED BY Allendale Charter Township (the “Township”), under the authority vested by law and in accordance with 1980 PA 87, as amended, that such property interests as identified in the attached Exhibits A, B, and C, are taken for the Purposes of the Project.

IT IS FURTHER DECLARED that a description of the property interests taken, of the name for each owner of such interest so far as known, a statement of the sum of money estimated by the Township to be just compensation for the interests taken, and a statement that the Township reserves its rights under Section 8 (2) of 1980 PA 87, as amended, MCL 213.58(2) are provided in the attached Exhibit A and are incorporated by reference in this Declaration of Taking.

IN WITNESS WHEREOF, the undersigned have executed this Declaration of Taking on May 8, 2023.

Jody L. Hansen
Allendale Charter Township Clerk

Adam Elenbaas
Allendale Charter Township Supervisor

The following Code does not display images or complicated formatting. Codes should be viewed online. This tool is only meant for editing.

Chapter 149

Cemetery

[HISTORY: Adopted by the Township Board of the Charter Township of Allendale 1-27-2020 by Ord. No. 2020-1. Amendments noted where applicable.]

§ 149-1 Title.

This chapter shall be known and cited as the "Allendale Charter Township Cemetery Ordinance."

§ 149-2 Definitions.

As used in this chapter, the following terms shall have the meanings indicated:

ASSIGNEE

Any person to whom any grave lot or grave site has been assigned by the Township. Any and all rights of an assignee shall be as defined in this chapter and by all laws, rules, regulations, ordinances and orders of any governmental agency having jurisdiction.

CEMETERY

Any cemetery owned and operated by the Township. This definition shall also include the Township, the Township Board, the Registrar and all Township officers, employees and agents when referring to matters pertaining to the ownership, operation, repair, maintenance, control and management of a cemetery.

FOUNDATION

A concrete slab used as a footing for a monument.

GRAVE LOT

An area of four to eight grave sites.

GRAVE SITE

~~An area for one burial.~~ An area for one full body burial, or four cremation burials, or one full body burial with one cremation burial- note: the full body burial must have occurred first.

IMMEDIATE FAMILY

Parents, spouse and children, including adopted children and stepchildren.

INTERMENT

The permanent disposition of the remains of a deceased person by ~~entombment~~ or burial.

MEMORIAL

A monument, marker, tablet, headstone, private mausoleum or tomb for family or individual use, tombstone, coping, enclosure, surface, burial vault, urn, crypt or niche plate.

MONUMENT

A tombstone or memorial of granite, or other stone of equivalent durability approved by the Registrar, which shall extend above the surface of the ground. Any action required or allowed by the Registrar may also be accomplished by his/her duly authorized agent.

REGISTRAR

The Township Clerk.

REMOVAL

The removal of the remains of a deceased person.

TOWNSHIP

Allendale Charter Township, Ottawa County, Michigan.

§ 149-3 Interments and removals.

- A. Subject to laws. In addition to the provisions of this chapter, all interments and removals shall be subject to all laws, rules, regulations, ordinances and orders of the Township and any other governmental agency having jurisdiction.
- B. Holidays. No interments, removal or interment service shall be permitted on Sundays or **Township observed** holidays (~~New Years Day, Memorial Day, Fourth of July, Labor Day, Thanksgiving Day and Christmas Day~~) or when the holidays mentioned fall or are ~~legally~~ observed on Saturday or Monday, except by prior approval of the Registrar.
- C. Notice. The Registrar shall have the right to require at least 36 hours' notice prior to any interment and at least one week notice prior to any removal.
- D. Burials.
 - (1) Only one person may be buried in a grave site with the exception of:
 - (a) A parent and an infant buried at the same time.
 - (b) Two children buried, each buried in burial boxes under four feet in length.
 - (c) **Up to four** ~~Four~~ cremated remains.
 - (d) One full body burial with one cremation burial as long as the full body burial has occurred first.**
 - (2) Any other combination must have prior written approval of the Registrar.
- E. Lots previously given to Township residents. Those grave lots and/or grave sites previously given to Township residents are identified in the Township records. These grave lots and grave sites are to be used only by the assignee and/or his/her/their immediate family. The remaining unused grave lots and grave sites shall revert back to the Township.
- F. ~~Interment boxes. Earth interments shall be enclosed in a concrete box or a box constructed with a metal of equivalent durability approved by the Registrar; provided, however, that a hard plastic box may be used for the interment of infants.~~
- G. ~~Interment of cremated remains. Cremated remains sent or delivered to the Township shall be permanently interred within a period of four weeks after receipt. If arrangements are not made for permanent interment within this time period, the Township shall in no way be liable or responsible for the damage or loss of cremated remains or the container holding the remains.~~
- H. Authorization to use assignee's grave sites. The Registrar shall have the right to make an interment of any member of the immediate family in any one of the assignee's grave sites. No other person may be interred in any grave site without written consent of all assignees of the grave site who are recorded as such in the cemetery records.

- I. Location of interment space. When specific instructions regarding the location of an interment space in a grave lot cannot be obtained or are indefinite, or when for any reason the interment space requested cannot be conveniently utilized, the Registrar may, in his/her discretion, select an interment space in such location in the grave lot as he/she deems best and proper. The cemetery shall not in any event be liable for interment decisions made pursuant to this subsection.
- J. Orders given by telephone. The cemetery shall not be liable for any action taken in reliance upon instructions given by telephone, or for any mistakes occurring from the want of precise and proper instructions as to the particular space, size and location in a grave lot where interment is desired. Orders given by the funeral director for the opening of a grave will be construed as orders from the assignee or heir(s).
- K. Correction of errors. The Registrar shall have the right to correct any errors made either in making interments or removals, or errors made in the description, transfer or assignment of any grave lot or grave site. Corrections may be made by cancelling the assignment and substituting and conveying in lieu thereof another grave lot or grave site in a similar location, insofar as reasonably possible, or in an alternate location selected by the Registrar or, in the sole discretion of the Registrar, by refunding the amount of money paid. In the event any such error shall involve the interment of the remains, the Registrar shall have the right to remove and/or transfer such remains so interred to a new grave site in a similar location, insofar as reasonably possible, as may be substituted and conveyed in lieu thereof.
- L. Delays of interments. The cemetery shall be in no way liable for any delay in the interment of remains where a protest to the interment has been made, or where there is a failure to comply with this chapter or any law, rule, regulation, ordinance or order of any governmental agency having jurisdiction. The Township reserves the right, under such circumstances, to place the remains in a receiving vault, until all disputed matters have been resolved and there is compliance with this chapter and all other applicable ordinances, laws, rules, regulations or orders. **The Township is not responsible for any costs resulting from this action and will be reimbursed by the appropriate parties.** The Township shall be under no duty to recognize any protest of an interment unless it is in writing and filed with the Registrar. Furthermore, the cemetery shall be in no way liable for any delay in completing an interment due to conditions beyond its reasonable control, such as weather conditions or illness of cemetery staff.
- ~~M. Burial boxes. Burial boxes over four feet in length will be classed as adult size; burial boxes under four feet in length will be classed as child size.~~
- N. Grave sites. The number of grave sites assigned will be recorded on the deed when grave sites are assigned.
- O. Care in removal. The cemetery shall exercise due care in making a removal, but it shall have no liability for damage caused to any casket, burial box or urn in making a removal.
- P. Funeral procession. ~~No funeral procession shall enter the cemetery unless authorized by the Registrar.~~ **The Township reserves the right to refuse a funeral procession as it deems necessary.** Once in the cemetery, a duly authorized funeral procession shall proceed according to and be under the direction of the Registrar until completion. Funeral directors must present the necessary burial or transit permit as required by state law.

§ 149-4 Sale and purchase of grave sites.

- A. Grave sites per family. A maximum of ~~four~~ **eight** grave sites per family may be purchased in advance. Additional grave sites for a family shall be sold on an as-needed and as-available basis.
- B. Charges and costs. The charges and costs for the purchase of grave lots, grave sites, grave openings/closings and all other cemetery services shall be established from time to time by resolution by the Township Board. All charges and costs shall be payable to the Township. No other person is

authorized to accept any monies in payment of any charge or cost. Any person tendering payment to any other person does so at his own risk. No Township employee may solicit or accept any form of payment or gratuity for work or services rendered. Township employees at the cemetery are not permitted to do any work for grave lot or grave site owners or interested parties except upon the direct order of the Registrar.

- C. Reserving grave sites. ~~No grave site or grave lot may be reserved until it has been paid for in full.~~ A gravesite may be reserved for up to seven days, until at which time it must be paid in full. If the gravesite is not paid in full after the close of seven days, it will be immediately available for purchase again. Any reservation agreements prior to the adoption of this ordinance are null and void.
- D. Transfer of grave sites. No grave site or grave lot can be transferred to another person without prior written approval of the Registrar, after receiving a written request for transfer from the assignee. No grave site or grave lot shall be purchased or sold or rights transferred for speculative purposes. No grave site or grave lot shall be used for any other purpose than for the burial of the human dead.
- E. Descent of grave sites and grave lots. Ownership of a grave site or a grave lot shall descend as directed by will or other suitable document signed by the assignee or, in the absence of such will or other suitable document, the grave site or grave lot shall descend as personal property under the applicable statutes of the State of Michigan.

§ 149-5 General supervision of Township properties.

- A. Recordkeeping. The Registrar shall keep a record of all grave sites, alphabetically and/or numerically, and shall also maintain a complete record of all assignments, receipts, burial records and other matters affecting the cemetery, according to document retention schedules as set forth by the State of Michigan.

§ 149-6 Control of work at the cemetery.

- A. Work done in the cemetery. All grading, foundation, installations, landscaping, fertilizing or improvements of any kind, the mowing of the grass, and the maintenance of all grass, trees, shrubs and herbage shall be done by the cemetery staff. All interments and removals shall be made only by the cemetery staff under the direction of the Registrar.
- B. Maintenance of the turf. Cutting into or otherwise disturbing the turf by anyone except the cemetery staff is prohibited. Any violation of this subsection shall release the Township from any obligation to resod or reseed the damaged area.
- C. Construction. All cemetery work of any description being conducted in the general area of a funeral shall cease while the funeral is being conducted. All trucks and workers shall withdraw a reasonable distance from the location of the funeral. The Registrar shall have the authority and discretion to enforce this section as he/she deems necessary.
- D. Monument Foundations. All foundations/footings will be installed by the cemetery staff under the direction of the Registrar only after all parties listed on the monument have been laid to rest. The Registrar may consider exceptions by written request and if approved will incur a cost to cover labor and materials. Not all request may be granted.

§ 149-7 Decoration of grave sites.

- A. Floral regulations. Flowers from funeral services may remain on the grave site for one week. All flowers must be planted in movable containers with handles. The cemetery shall have the authority to remove all floral designs, flowers, weeds, trees, shrubs, plants, or herbage of any kind from the cemetery as soon as, in the judgment of the Registrar, they become unsightly, dangerous, detrimental or diseased, or when they do not conform to the general character or appearance of the landscaping within the cemetery. The cemetery shall not be liable for floral pieces, baskets or frames in which or to which such floral pieces are attached, beyond the acceptance of such floral pieces for funeral services to be held in the cemetery.

The cemetery shall not be liable for lost, misplaced or broken floral containers. The cemetery shall not be liable for damage due to the elements, thieves, vandals, or by other causes beyond its reasonable control. The cemetery reserves the right to regulate the method of decorating grave lots and/or grave sites so that a uniform appearance can be maintained.

- B. Plantings on grave sites. All trees planted on or removed from any grave site shall be done by the cemetery.
- C. Objects on grave sites. No stones, colored stones, wire stems, glass containers, mausoleums, tombs, fences, railings, copings, walls, hedges, or enclosures of any kind or nature shall be placed or erected around or on any grave site.
- D. Removals of offensive structures, etc. If any monument, effigy or other structure placed upon any grave site shall be determined by the Registrar to be indecent, profane, pornographic or otherwise offensive to the Township community, it shall be removed by the cemetery staff after five days' prior written notice by mail to the address of the grave site assignee as shown on the cemetery records.
- E. Cemetery cleanup. The cemetery shall remove all wreaths and flowers ~~in late fall and again in early spring~~ **as needed**.

§ 149-8 Roadways and replanting.

- A. Right to replant, regrade and use property. The right to enlarge, reduce, replant and/or change the boundaries or grading of the cemetery or any part thereof, including the right to modify and/or change the locations of or remove or regrade roads, drives and/or walks, or any part thereof, is expressly exclusively reserved to the cemetery. The right to lay, maintain and operate, or alter or change pipe lines and/or gutters for sprinkling systems, drainage, lakes, etc., is also expressly exclusively reserved to the cemetery, as well as is the right to use cemetery property, not assigned to individual grave lot or grave site assignees, for cemetery purposes, including the interring and preparing for interment of remains, or for anything necessary, incidental or convenient thereto. The cemetery reserves a perpetual right of ingress and egress over grave lots for the purpose of passage to and from other grave lots.
- B. No right granted in alleyways. No easement or right of interment is granted to any grave lot or grave site owner in any road or walk within the cemetery, but such road, drive, alley or walk may be used as a means of access to the cemetery or buildings as long as the cemetery devotes it to that purpose.

§ 149-9 Conduct of persons within the cemetery.

- A. Road use. Persons within the cemetery grounds shall travel within the cemetery using only the established roads and walks except that a person may carefully walk upon or cross grave lots or grave sites or lawns when necessary to gain access to a grave site. No person shall enter the cemetery except through a permitted point of entry.
- B. Trespassers on grave sites. Only assignees, their relatives and invited friends and guests shall be permitted on a grave site. Any other person thereon shall be considered as a trespasser. Loitering in the cemetery is prohibited.
- C. Children in the cemetery. Children under 18 years of age shall not be permitted within the cemetery unless they either:
 - (1) Are accompanied by one or more adults who are responsible for them; or
 - (2) Have permission to visit the cemetery from their parents or guardians.

- D. Damaging plant life. Persons in the cemetery are prohibited from picking flowers (wild or cultivated), damaging trees, shrubbery, grass or plants, or feeding or disturbing birds, fish or any other animal life. No person may write on, deface or destroy any memorial or any other structure. No person may destroy or otherwise disturb the birds or other animal life within the cemetery if not authorized by the Registrar.
- E. Refreshments. No person shall consume ~~food or beverages~~ **alcohol or illegal substances** in the cemetery, or carry the same into the cemetery.
- F. Lounging on cemetery grounds. No person shall be permitted to sit or to lounge on any of the grounds, graves or monuments in the cemetery, or in any cemetery building.
- G. Loud talking. Loud talking or any other noise disturbance shall not be permitted in the cemetery within hearing distance of funeral services.
- H. Rubbish. The throwing of rubbish or debris on the cemetery grounds or otherwise littering in the cemetery is prohibited.
- I. Smoking. Smoking within any cemetery building is prohibited.
- J. Motor vehicles. Motor vehicles must always keep on the right hand side of a cemetery road. Motor vehicles are not allowed to park or to come to a full stop in front of an open grave unless the occupants of the motor vehicle are in attendance at the funeral. Motor vehicles shall not:
 - (1) Drive off a cemetery road unless permission is given by the Registrar;
 - (2) Drive a motor vehicle in such a manner as to damage any grass, tree, shrubbery or plant in the cemetery;
 - (3) Make a U-turn on a cemetery road;
 - (4) Park a motor vehicle or leave a motor vehicle in such a location as to prevent any other motor vehicle from passing. Any motor vehicle parked in such a manner may be ordered removed by the Registrar, and the owner and/or operator shall be responsible for all costs;
 - (5) Operate a vehicle in the cemetery for recreation purposes;
 - (6) Use a cemetery road as a public thoroughfare; or
 - (7) Operate at a speed in excess of 10 MPH.
- K. Peddling or soliciting. Peddling of flowers or plants or soliciting the sale of any commodity, other than by cemetery staff, is prohibited within the cemetery.
- L. Firearms. No firearms shall be permitted within the cemetery, except by permission of the Registrar, and except for a duly authorized law enforcement officer or a duly authorized military escort for a veteran's funeral or memorial service.
- M. Notices and advertisements. No signs or notices or advertisements of any kind shall be allowed in the cemetery, unless placed by the cemetery.
- N. Pets. Pets shall not be allowed on the cemetery grounds or in any of the cemetery buildings.
- O. Proper conduct. It is of the utmost importance that proper conduct is observed on the cemetery grounds. The cemetery shall not be used as a place for recreational activity. The Registrar shall have the power to remove from the cemetery any person who conducts himself or herself in a disrespectful manner or without proper decorum.

- P. Enforcement. The Registrar shall have the authority to enforce this chapter and to exclude from the cemetery any person who violates this chapter. The Registrar shall have charge of the grounds and buildings, and at all times shall have supervision and control of all persons in the cemetery, including the conduct of funerals, traffic, employees, Assignees and visitors. The Registrar is authorized to make temporary rules and regulations which he or she deems necessary to meet emergencies not covered by this chapter.

§ 149-10 Liability.

- A. The cemetery shall not be held responsible for damages by the elements, acts of God, common enemies, thieves, vandals, strikers, malicious mischief makers, explosions, unavoidable accidents, invasions, insurrections, riots or the order of any military or civil authority, whether the damages be direct or collateral.
- B. All non-Township employees working in the cemetery shall be fully responsible for any damage done by them or their agents. Upon completing their work, such non-Township employees must immediately remove all tools, equipment and debris from the cemetery, and they must repair any damage they do to the cemetery grounds.

§ 149-11 Rules for memorial work.

- A. Memorials. All permanent memorials to be erected or placed in the cemetery must be stone or other equally durable composition approved by the Registrar.
- B. Foundations. Any large upright memorials must be located upon a suitable foundation to maintain the memorial in an upright position. All foundations for memorials shall be erected by the cemetery staff upon such type and size of foundation as shall be specified by the Registrar. The cemetery charges for a foundation shall be paid by the assignee. These charges shall be established from time to time by Township Board resolution.
- C. Memorial specifications. No person shall erect or place a memorial in the cemetery unless the plans and specifications therefor shall have been submitted to and approved, in writing, by the Registrar.
- D. Memorial. No more than one upright memorial shall be allowed above the ground or at ground level on any one grave site.
- E. Excavation, grading, etc. All excavations, grading or removal of earth or rubbish shall be excavated, graded or removed in such a manner as the Registrar may direct. No grave site, grave lot or other area of the cemetery drive shall be graded in shape or in any manner altered from the general plan of the cemetery.

§ 149-12 Hours.

The cemeteries will be open daily from dawn to dusk. Any person who gains entrance or is found in the cemetery between dusk and dawn shall be treated as a trespasser and prosecuted as such.

§ 149-13 Exceptions.

Special cases may arise in which the literal enforcement of a provision of this chapter may impose an undue and unnecessary hardship. Notwithstanding any such provision to the contrary, the Registrar, after due consideration, may make such exceptions, suspensions or modifications of any applicable provision as he/she shall deem appropriate. Any such exception, suspension or modification shall not be construed as affecting the general application or the intent of the provisions of this chapter.

§ 149-14 Violations and penalties; enforcement.

- A. In addition to any other charges, fines or penalties for which a person may be liable under other applicable law or local ordinances, any person who shall violate a provision of this chapter, or who shall

fail to comply with any of the requirements hereof, shall be responsible for a municipal civil infraction, subject to Chapter 35, Municipal Civil Infractions, § 35-7. Each day during which any violation continues after due notice has been served shall be deemed a separate and distinct offence. Increased civil fines may be imposed for repeated violations of this chapter; "repeated violations" means a second or subsequent civil infraction violation committed by a person within any twelve-month period and for which the person admits responsibility or is determined to be responsible. The increased civil fine for repeat violation is set forth in Chapter 35, Municipal Civil Infractions, § 35-7. **[Amended at time of adoption of Code (see Ch. 1, General Provisions, Art. I)]**

- B. The Registrar, members of the Ottawa County Sheriff's Department assigned to the Township, members of the Ottawa County Sheriff's Department whose services are contracted by the Township and any other individuals who may from time to time be appointed by resolution of the Township Board are hereby designated as the authorized Township officials to issue municipal civil infraction citations (directing alleged violators to appear in court) or municipal civil infraction notices (directing alleged violators to appear at the Allendale Charter Township Municipal Ordinance Violations Bureau) as provided Chapter 35, Municipal Civil Infractions, of this Code.

§ 149-15 Severability; section titles.

This chapter and the various parts, sections, subsections, sentences, phrases and clauses thereof are hereby declared to be severable. If any part section, subsection, sentence, phrase and clause is adjudged unconstitutional or invalid, the remainder of the chapter shall not be affected hereby. The captions included at the beginning of each section and subsection are for convenience only and shall not be considered a part of this chapter.

§ 149-16 Administrative liability.

No officer, agent or employee of the Charter Township of Allendale, or a member of the Charter Township of Allendale Board, shall be rendered liable for any damage that may occur to any person as a result of any act, decision or other consequence or occurrence arising out of the discharge of his or her duties and responsibilities pursuant to this chapter.

§ 149-17 Repeal.

All resolutions, ordinances, orders or parts thereof in conflict in whole or in part with any provision of this chapter are, to the extent of such conflict, hereby repealed.

Proposed Cemetery Fees:

Gravesite for Resident- \$500

Gravesite for Non-Resident- \$1200

*Residency determined by current state drivers license or state identification card. The Registrar may also verify by current voter registration address.

Grave Open/Close Full Body Burial- \$725 (includes monument foundation)

Eliminate Open/Close fee for adult/child. Open close is same for either as labor and equipment requirements are the same.

Grave Open/Close Cremation Burial-\$250 (includes monument foundation)

Moving of remains from one grave to another within the cemetery- \$1450

Disinterment of remains that will be moved to another cemetery- \$1000

Saturday Burials \$200 additional

Winter Burials (December 1- March 31) \$200 additional

Transfer gravesites from resident to resident- \$30

Transfer gravesites from non-resident to non-resident- \$30

Transfer gravesites from resident to non-resident- \$800

Change Burial Hours to:

Monday – Saturday 8am – 2pm

Eliminate late day fees and availability.

Cemetery	
Grave site for residents	\$400
Grave site for non-residents	\$1,000
Grave opening/closing for resident (Footing costs included)	\$500
Grave opening/closing for non-resident (Footing costs included)	\$950
Grave opening/closing for resident who is a child with burial box under 4 feet in length (Footing costs included)	\$300
Grave opening/closing for non-resident who is a child with burial box under 4 feet in length (Footing costs included)	\$600
Cremation grave opening/closing for resident (Footing costs included)	\$200
Cremation grave opening/closing for non-resident (Footing costs included)	\$300
Moving of remains from one grave to another in the cemetery	\$1,000
Dis-interment of remains that will be moved to another cemetery	\$1,000
Saturday burials	\$200 additional plus an additional \$150 per hour after 2 PM
Winter burials (December 1-March 31)	\$200 additional plus an additional \$150 per hour after 2 PM
Weekday late afternoons (3:00-5:00 pm)	\$150 additional per hour. One hour minimum charge
Transfer of grave sites from resident to resident	\$20
Transfer of grave sites from non-resident to non-resident	\$20
Transfer of grave sites from resident to non-resident	\$700

NO SUNDAY BURIALS

Maps	
Township map	\$2

Picnic Shelter Rental	
East Picnic pavilion only (4 HOURS)	\$40 Resident
East Picnic pavilion only (4 HOURS)	\$50 Non-resident

Industrial Facilities Tax Abatement (IFT)

IFT application (including establishing of district)	\$750
IFT application (without establishing a district)	\$750
Transfer of IFT Exemption	\$750
Amendment of IFT Certificate	\$750

Township Hall Rental

Auditorium	
Resident...first 4 hours	\$80
Non-Resident.....first 4 hours	\$100
Each Additional Hour	\$20
Security Deposit (each Event)	\$50

Water and Sewer Rates

Contact the Public Works Department at 616-892-3125, or tammywalker@allendale-twp.org or denisewiersma@allendale-twp.org

Building Rates

Contact the Planning and Community Development Department at 616-895-6295, ext. 1109, or kellimcgovern@allendale-twp.org

Solicitation License

License for 30 days	\$25
Renewal of license for additional 30 days	\$15
One year license	\$50

Vendors License

30 days	\$25
Renewal for another consecutive 30 days	\$15
180 day/6 month consecutive	\$50

Community Park/ Field Rental Fees	
Athletic Fields	\$ 75.00 per field
Security Deposit (each event)	\$ 200.00

Freedom of Information Act requests and copies (FOIA)	
Duplication	
Letter size in black and white	\$.06
Legal size in black and white	\$.07
11x14 size in black and white	\$.10
Letter size in color	\$.10
Legal size in color	\$.14
11x14 size in color	\$.20
Fax per page	\$.50
Computer labels (30 labels per page)	\$.50 per page
Mailing costs	Actual postage costs
Computer disk/CD	\$1 per disk
Labor	Hourly wage of the lowest paid employee capable of retrieving the information

Liquor Licenses	
Original application	\$750

Zoning Escrow

Zoning Board of Appeals	\$ 250.00
Special Use Land Requests	\$ 250.00
Rezoning Requests	\$ 400.00
Planned Special Unit Development Requests	\$ 600.00
Special Meeting Requests	\$ 500.00
Administrative Review	\$ 500.00

Escrow Account Schedule

Planned Unit Development Projects	\$ 1,500
Site Plan Reviews	\$ 1,500
Special Land Uses	\$ 1,500
Subdivision Plat Reviews	\$ 1,500
Zoning Ordinance Amendments	\$ 1,500
Site Condo Reviews	\$ 1,500
Private Road Approvals	\$ 1,500
Variance or Zoning Ordinance Interpretation Requests	\$ 250
Open Space Developments	\$ 1,500
Wireless Communication Facility Applications	\$ 1,000

Rental Inspection Fee Schedule

Single Family Duplex—per unit Multi-family -
Per unit

Initial Inspection	\$ 85	\$ 50	\$ 40
1 st . Re-inspection	\$ NC	\$ NC	\$ NC
2 nd . Re-inspection	\$ 40	\$ 40	\$ 40
Subsequent Inspection	\$ 40	\$ 40	\$ 40

* Note: For Duplex in which the owner occupies one unit, the rented unit is treated as a single family and charged \$85