

Allendale Charter Township Parks and Recreation Plan

2020-2024

Prepared for the
Allendale Charter TownshipBoard
6676 Lake Michigan Dr.
P O Box539
Allendale MI49401

616-895-6295
www.allendale-twp.org

Allendale Charter Township Parks and
Recreation Advisory Board Members:

Kristen Corner

Scott Daling

Larry Haveman

Marcia Hoekstra

Nicole Jones

Ken Knoper

Chuck Rapson

J.T.Hogan

Tom Zuniga

Updated October 12, 2020

Table of Contents

Introduction.....	1
Community Description	2
Administrative Structure.....	5
Staff & Administration	5
Parks Budget	6
Cooperation & Volunteers	6
Recreation Inventory	7
Township Recreation Resources	7
Recreation Resources within the Township.....	8
Regional Facilities.....	9
Special Use Facilities	10
Planning Process	11
Comparison to Recreation Standards	11
Public Input Summary	11
Parks Survey Word Cloud (most common words largest)	13
Goals and Objectives	14
Goal 1: Develop an Interconnected Non-Motorized Path System	14
Goal 2: Develop New Parks	14
Goal 3: Improve and expand facilities at Community Park.....	14
Action Program.....	15
Appendix A	A1
Community Park Master Plan	A1
Appendix B	A2
Allendale Charter Township Parks & Trails Master Plan.....	A2
Appendix C	A3
Supplemental DNR Attachments	A3
Appendix D: Land Acquisition Guidelines	A4

Introduction

A Parks and Recreation Plan is a guide that helps communities express its recreation goals and visions and plans. Because of the constant change in our social and economic structure and activities, the Parks and Recreation Plan must be maintained through periodic review and revision so that it reflects contemporary trends while maintaining long-range goals.



As much as the Township has changed in the last 30 years, it is likely that it will experience as much or more change in the next 30 years. Change in a community presents a challenge to its citizens and its local government to anticipate and plan needs.

Because of the constant change in our social and economic structure and activities, the Parks and Recreation Plan must be maintained through periodic review and revision (every five years) so that it reflects contemporary trends while maintaining long-range goals. The plan will be effective to the degree that it continues to:

- Reflect needs and desires of the people
- Realistically interpret and reflect the conditions, trends and the changes in society
- Inspire concurrence and cooperation among the various public agencies and the citizens of the community

The preparation of this document is prompted by the Township's rapid population growth, the desire to protect and provide access to area natural resources, an interest in maintaining eligibility for grant dollars, and the desire to plan for open space protection in the Township.

This plan is a revision of the 2013 Parks and Recreation Plan. The original plan was prepared in 1979, with revisions made in 1980, 1986, 1993, 1998, 2003 and 2008.

Community Description

Allendale Charter Township is in the center of Ottawa County, between Grand Rapids on the east, Holland and Grand Haven on the west, Jenison and Hudsonville on the south, and Coopersville on the north. The Township is located on Lake Michigan Drive, a major transportation route between Grand Rapids and Lake Michigan.

Grand Valley State University (GVSU) is located within the Township. GVSU has grown greatly since its beginning in 1963. The community has experienced growth related to GVSU's development. In addition, the expansion of the Grand Rapids metropolitan area has made the Township an attractive suburban community for many who work in the Grand Rapids area. The growth of our community and in the surrounding communities has created a need for more recreational facilities to serve the people of the Township and surrounding areas.

Forty years ago, the Township was predominantly a rural community. As the Township continues to develop, the character, economy and population have become much more diverse, ranging from urban to rural. A significant manufacturing component has been added to the Township's economic base. The population has multiplied, and residents are served by a more complete range of commercial goods and services. In addition, the main campus of Grand Valley State University, one of Michigan's major public universities, has evolved from a small cluster of buildings to a campus of approximately 700 acres, with a total enrollment in the fall of 2018 of 25,460 students, for both the Allendale and Grand Rapids campuses.

The Township currently is a service center for the surrounding agricultural and suburban areas as well as GVSU. Several residents are students, faculty, and staff at GVSU, and many residents commute to work in surrounding communities. The 2010 Township census shows a population increase of 63% from 2000 to 2010. The most recent population estimate (26,686 in 2018) is an increase of 28% over the 2010 population (20,708).

Population Changes by Decade

Year	Population	% Change
1970	3,554	--
1980	6,080	71%
1990	8,022	32%
2000	13,042	62%
2010	20,708	63%
2018	<i>Est. 26,686</i>	29%

The soils and topographic conditions in the Township are generally suitable for most types of urban development. This is another factor in the desirability of the area as a suburban residential location. The Grand River also is an important natural resource impacting the residential growth in the area. It forms the north and east boundaries of the Township and, as efforts to improve the environmental quality of the river are more successful, it will become a major attraction for recreational and residential development.

Allendale Charter Township Parks & Recreation Plan

While much of the residential development is related to GVSU's growing need for student housing, faculty, and staff housing, and housing for service/retail workers, another portion of the growth is related to the expansion of the Grand Rapids metropolitan area.

Population	
Population estimates, July 1, 2018, (V2018)	26,686
Population estimates base, April 1, 2010, (V2018)	20,708
Population, percent change - April 1, 2010 (estimates base) to July 1, 2018, (V2018)	28.9%
Population, Census, April 1, 2010	20,708
Age and Sex	
Persons under 5 years, percent	4.9%
Persons under 18 years, percent	18.7%
Persons 65 years and over, percent	5.0%
Female persons, percent	52.6%
Race and Hispanic Origin	
White alone, percent	88.6%
Black or African American alone, percent(a)	3.9%
American Indian and Alaska Native alone, percent(a)	0.5%
Asian alone, percent(a)	1.5%
Native Hawaiian and Other Pacific Islander alone, percent(a)	0.0%
Two or More Races, percent	3.1%
Hispanic or Latino, percent(b)	7.4%
White alone, not Hispanic or Latino, percent	84.3%
Population Characteristics	
Veterans, 2013-2017	742
Foreign born persons, percent, 2013-2017	3.80%
Housing	
Owner-occupied housing unit rate, 2013-2017	55.1%
Median value of owner-occupied housing units, 2013-2017	\$175,700
Median selected monthly owner costs -with a mortgage, 2013-2017	\$1,310
Median selected monthly owner costs -without a mortgage, 2013-2017	\$492
Median gross rent, 2013-2017	\$947
Families & Living Arrangements	
Households, 2013-2017	6,420
Persons per household, 2013-2017	2.99
Living in same house 1 year ago, percent of persons age 1 year+, 2013-2017	61.6%
Language other than English spoken at home, percent of persons age 5 years+, 2013-2017	5.1%

Allendale Charter Township Parks & Recreation Plan

Computer and Internet Use

Households with a computer, percent, 2013-2017	96.0%
Households with a broadband Internet subscription, percent, 2013-2017	82.1%

Education

High school graduate or higher, percent of persons age 25 years+, 2013-2017	93.1%
Bachelor's degree or higher, percent of persons age 25 years+, 2013-2017	34.1%

Health

With a disability, under age 65 years, percent, 2013-2017	6.1%
Persons without health insurance, under age 65 years, percent	6.4%

Economy

In civilian labor force, total, percent of population age 16 years+, 2013-2017	66.3%
In civilian labor force, female, percent of population age 16 years+, 2013-2017	61.5%
Total accommodation and food services sales, 2012 (\$1,000)(c)	31,367
Total health care and social assistance receipts/revenue, 2012 (\$1,000)(c)	14,932
Total merchant wholesaler sales, 2012 (\$1,000)(c)	27,832
Total retail sales, 2012 (\$1,000)(c)	84,381
Total retail sales per capita, 2012(c)	\$4,003

Transportation

Mean travel time to work (minutes), workers age 16 years+, 2013-2017	21.1
--	------

Income & Poverty

Median household income (in 2017 dollars), 2013-2017	\$47,644
Per capita income in past 12 months (in 2017 dollars), 2013-2017	\$17,852
Persons in poverty, percent	28.3%

Businesses

All firms, 2012	930
Men-owned firms, 2012	485
Women-owned firms, 2012	306
Minority-owned firms, 2012	48
Nonminority-owned firms, 2012	832
Veteran-owned firms, 2012	183
Nonveteran-owned firms, 2012	720

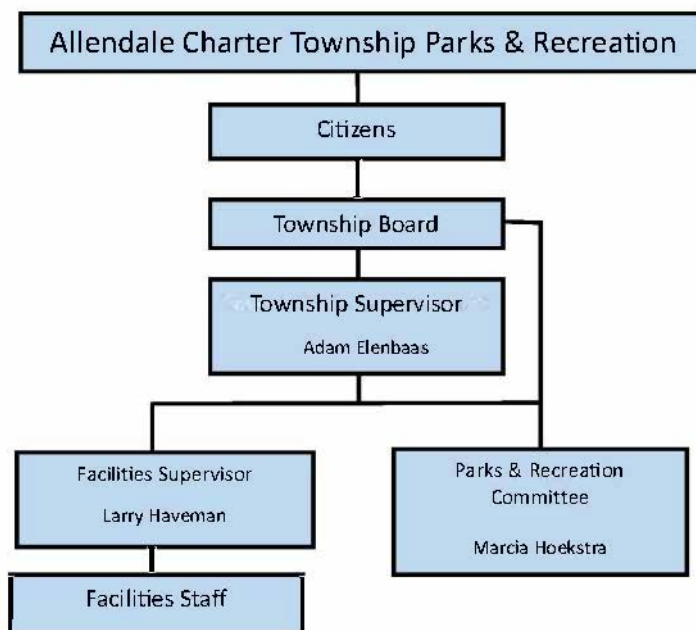
Geography

Population per square mile, 2010	665.2
Land area in square miles, 2010	31.13

Administrative Structure

Staff & Administration

The Allendale Charter Township Board is the legal agency for all Township owned recreational facilities. Together with the Parks and Recreation Advisory Board, they see that all projects are completed, as funds become available. The Township owns the Allendale Community Park, is responsible for the administration, and provides the general upkeep and maintenance funds, as well as the supervision of programs. At the present time there are no anticipated changes in staffing or administration of the recreational activities.



Allendale Charter Township Planning Commission - The Planning Commission consists of seven voting members and one staff advisor. Members are appointed by the Supervisor and approved by the Township Board. The basic function of the Planning Commission is to make and adopt a plan for the guidance of the development of the Township. The plan includes maps, plats, charts and descriptive and explanatory materials. In addition to private land use, it considers general location of major streets, water and sewer systems, public utilities and structures, rehabilitation of blighted areas, location of public buildings, flood prevention, public recreation and other similar matters pertinent to governmental services. The Township Board has final authority to approve each plan.

Allendale Charter Township Parks & Recreation Plan

Parks Budget

Funding for parks and recreation capital outlay, operations, and maintenance is primarily funded through general budget allocation each year as shown in the budget below. On special occasions such as for major capital outlay expenditures, the Downtown Development Authority (DDA) will allocate resources to help accomplish a specific project that would otherwise not be possible with the approximately 100-150k normally allocated for parks and recreation total budget. In addition, the parks advisory board also seeks private and grant funding. With a strong desire to expand the park system, it is understood that funding from all sources will need to increase significantly over the next 5 years to accomplish some of the major goals outlined in this park plan as well as planning for the operations and maintenance expenditures that go along with parks and trails expansion.

2019 REV & EXP - 2020 BUDGET											
2014 Actual	2015 Actual	2016 Actual	2017 Actual	2018 Actual	Account	PARKS AND RECREATION Description	2019 Budget	10/31/2019 YTD	2019 Projected	2020 Budget	% of Budget
44,524	41,984	47,311	47,451	52,150	101-751-702.000	SALARIES	61,000	41,968	58,000	60,000	68.80%
1,748	3,408				101-751-702.040	GARDEN CLUB					0.00%
3,611	3,619	3,580	3,507	3,853	101-751-715.000	EMPLOYERS FICA	4,400	3,097	4,176	4,320	70.38%
1,751	1,780	2,674	2,799	3,087	101-751-716.000	EMPLOYER'S 401(A)	3,660	2,561	3,480	3,600	69.97%
1,575	503	1,193	490	894	101-751-726.000	SUPPLIES	2,000		2,000	2,000	0.00%
1,444	158	307	218	38	101-751-726.030	FLOWERS/SHRUBS/TREES	2,000	1,414	1,600	2,000	70.71%
752	1,336	2,582	1,707	1,291	101-751-726.040	FERTILIZER	2,000	1,370	2,000	2,000	68.52%
536	85	1,585			101-751-802.000	CONTRACTED SERVICES	1,500		1,500	1,500	0.00%
-	-				101-751-803.000	PROFESSIONAL SERVICES					0.00%
1,933	2,063	3,254	4,333	4,370	101-751-815.000	INSURANCE	4,500	3,982	3,982	4,500	88.49%
3,916	4,324	3,456	2,917	2,772	101-751-918.000	WATER USAGE	5,000	877	5,000	5,000	17.54%
6,747	6,523	6,814	6,680	6,722	101-751-920.000	ELECTRICITY	7,000	5,797	7,000	7,000	82.81%
4,004	9,305	6,194	3,459	4,512	101-751-930.000	MAINTENANCE	5,000	2,549	5,000	5,000	50.99%
2,879	2,283	1,754	1,421	2,093	101-751-931.000	GAS & OIL	4,000	1,342	4,000	4,000	33.54%
413	-	475		3,575	101-751-955.000	MISCELLANEOUS	1,000	94	1,000	1,000	9.41%
-	4,539	32,666	8,071	7,910	101-751-970.000	CAPITAL OUTLAY	40,000	22,364	40,000	55,000	55.91%
75,832	81,910	113,845	83,053	93,268		TOTAL PARKS & RECREATION	143,060	87,416	138,738	156,920	61.10%
						Larry					
			-	-	Revenue Sources	STATE GRANT - PARK		-			
			-	690		DONATIONS-PARK		970			
			-	690		Total		970			

Cooperation & Volunteers

The local schools, churches, organizations, businesses, GVSU and the Township personnel all work closely together in the sharing of buildings, facilities and equipment. This also applies to recreational facilities. Often occasions arise when one group must rely upon another group for assistance, and generally, there is a real cooperative attitude within the community.

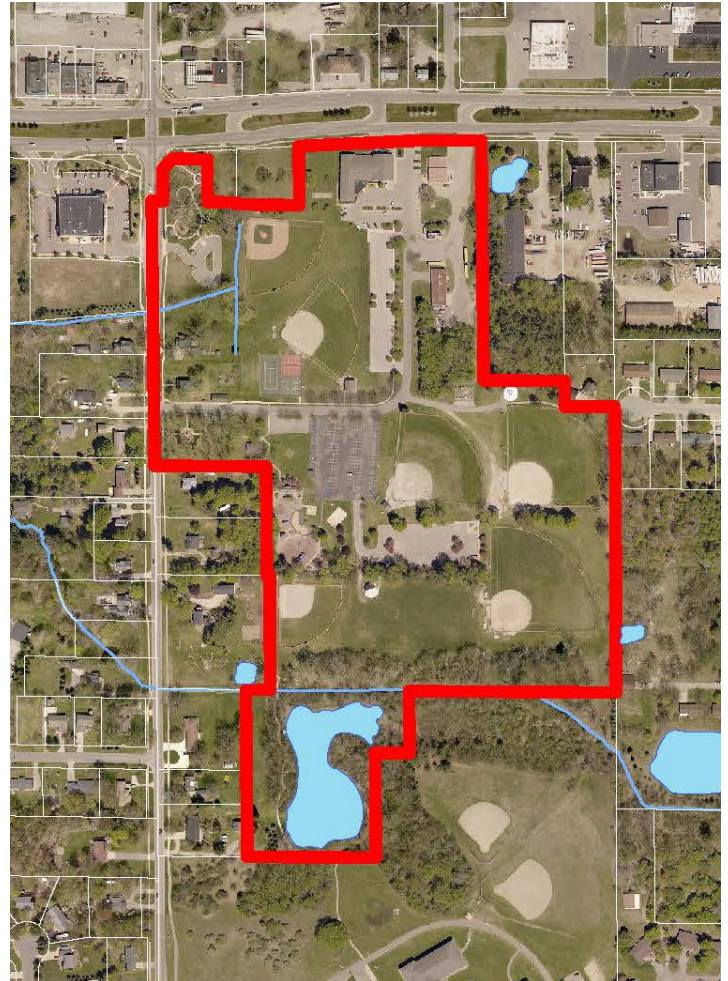
Recreation Inventory

Township Recreation Resources

Allendale Community Park (shown below) is comprised of 40 acres and is a busy place during the warm weather months. One reason is the park's outstanding softball and Little League facilities, which attract teams and players from a wide geographic area. In 2019 major park improvements began including new tennis & pickleball courts, basketball court, picnic shelter, sidewalks, and parking improvements. See Appendix A for the new master plan for the park and proposed improvements to the township offices, fire station, entry drive and parking.

Park Amenities

- Veterans Memorial
- Handicap-accessible playground area and restroom facilities
- Handicap-accessible parking lot and walkways
- One-acre pond
- Nature trails
- Pedestrian bridge
- Basketball Court
- Tennis & Pickleball Courts
- Fitness Court
- 3 Adult ball diamonds with lights
- 3 Little League ball diamonds without lights
- 2 Splash Pads
- Concession areas
- Three picnic shelters
- Band Pavilion



Accessibility rating is 4 out of 5.



Non-motorized Paths & Sidewalks

In 1995, the Township Board appointed a Safety Path Committee, whose responsibility it was to study the needs of non-motorized pathways in the Township. The advisory board prepared a Non-Motorized Pathways Master Plan, which includes connecting pathways between Allendale Public High School, the Allendale Public Elementary School, the Allendale Christian School, the Allendale Community Park, and the Allendale Charter Township Library. The Township has received State Enhancement Funds to install some of these paths, with matching funds coming from the Township's General Fund. In 2002 Ottawa County completed a Non-Motorized Pathways Study. The Township's Non-Motorized Pathways plan was incorporated into the county plan. The township has been steadily adding to its community sidewalks each year as more development continues. Existing paths and sidewalk quantities are shown below.

Path Width	Quantity (ft.)
5'	93,650'
6'	1,330'
7'	630'
10'	11,058'

Recreation Resources within the Township

State/National Parks – The federal government does not actively manage any recreational lands within Ottawa County. It does, however, own approximate 40 acres of land called the Bass River Recreation Area, divided among 19 islands located along the Grand River in the eastern portion of the County. The State owns acreage in Robinson Township and Allendale Charter Township for future development as a state park or recreation area. With Grand River frontage, this site can be expected to provide significant recreation opportunities in the future, although a master plan identifying specific park plans has not yet been developed.

County Parks – Eastmanville Bayou, located in Allendale Township, is a 157-acre open space land with 1.75 miles of Grand River frontage and 1.5 miles on Eastmanville Bayou. Acquired in late 2008, the property immediately became popular with fisherman as an access point to Eastmanville Bayou. Two houses on the property were removed in 2009 and access was permitted. Nearby residents and the general public were encouraged to participate in the master planning process that was completed in January 2010. Most improvements are planned for the property just southwest of the 68th Avenue bridge over the Grand River which will serve as the primary access point for the site. Improvements include a parking area, a small boat launch ramp on the bayou, a walkway under the bridge to access eastern portion of the site, picnic sites, interpretive displays, a

canoe/kayak dock on the Grand River and rustic toilets. The plan also envisions the site as a trailhead for the future Grand River Greenway non-motorized trail.

Regional Facilities

Regional Parks – The Township is fortunate to be located within a short distance of many regional parks located outside of the Township, which are owned and managed by local governmental units.

1. Aman Park (Grand Rapids City)
 - 331 acres
 - Located six miles east of Allendale
 - Cross country skiing trails
 - Hiking trails
 - Natural areas
 - Fire pit with benches
2. Deer Creek Park (Ottawa County)
 - 2 acres
 - Located five miles north of Allendale
 - Picnic areas
 - Boat ramp
 - Fishing
 - Grand River access
3. Hagar Park (Ottawa County)
 - 104 acres
 - Located nine miles south of Allendale
 - Arboretum
 - Visitors center
 - Picnic areas with shelters
 - Playgrounds
 - Hiking trails
 - Natural areas
 - Ball field
4. Riverside Park (Ottawa County)
 - 64 acres
 - Located ten miles west of Allendale
 - Picnic areas with shelters
 - Boat ramps
 - Natural areas
5. Spring Grove Park (an Ottawa County park)
 - 16 acres
 - Located 5 miles southeast of Allendale
 - Picnic building
 - Playground
 - Ball field
 - Volleyball area
6. Pigeon Creek Park (an Ottawa County park)
 - 282 acres
 - Located ten miles southwest of Allendale
 - Picnic areas
 - Woods
 - Mountain biking
 - Lodge with concessions
 - Lighted trails
 - Horseback riding
 - Hiking trails
 - Mountain biking
 - Sledding hill
 - Warming lodge with concession and ski rental
 - Cross country skiing
 - Pigeon Creek access
 - Grand River access

Special Use Facilities

The Township is fortunate to be located within a short distance of many special use facilities located in the Township, which are owned and managed by local groups.

1. Allendale Christian School
11050 64th Avenue, Allendale MI 49401
 - Gymnasium
 - Playground
 - Soccer field
 - Softball field
 - Basketball courts
 - Track
2. Allendale Public Elementary School
10690 Learning Lane, Allendale MI 49401.
 - 2 playgrounds
 - 2 soccer fields
 - 2 multi-purpose sports rooms
3. Allendale Public Middle School
10505 Learning Lane, Allendale MI 49401
 - 2 gymnasiums with balcony area (seating for 900)
 - Baseball and softball fields
 - Playgrounds
 - Outdoor basketball courts
 - Football/soccer field without lights
 - Cinder running track
4. Allendale Public High School
10760 68th Avenue, Allendale MI 49401
 - Gymnasium (seating for 1,800)
 - Indoor walking/jogging track
 - 2 indoor multi-purpose rooms
 - Outdoor track
 - 2 softball fields (1 competitive and 1 practice)
- 2 baseball fields (1 competitive and 1 practice)
- Practice soccer and football fields
- Football field (seating for 2,000)
- Weight and fitness room
5. Ottawa Area Center for Exceptional Children
10160 96th Avenue, Allendale MI 49401
 - Picnic area
 - Nature trail
 - Tetherball
 - Playground
 - All-purpose field
 - Football field
6. Grand Valley State University
 - Nature trails
 - Baseball and softball fields
 - Football fields
 - Football stadium
 - Basketball courts
 - Golf course with learning center and driving range
 - Cross country skiing
 - Roller hockey
 - Soccer field
 - Tennis courts
 - Multiple indoor facilities in the field house

Planning Process

Comparison to Recreation Standards

Allendale Charter Township land was classified using the Recreation Park and Open Space Standards and Guidelines published by the National Recreation and Park Association (NRPA).

	Mini-Park	Neighborhood Park	Community Park	Total
Number of Parks	0	0	1	1
Total Acres	0	0	40	40
1000's of people	27	27	27	27
Acres / 1000 people	0.00	0.00	1.48	1.48
DNR Standards (acres/1000 people)	0.25 - 0.50	1.00 - 2.00	5.00 - 8.00	6.25 - 10.00

Allendale Charter Township has 1.48 acres of park land per 1,000 people, well under the NRPA guidelines of 6.25 to 10.5 acres of land per 1,000 people.

Public Survey Summary

There was a total of 86 responses to the survey, the average age of people responding is 42yrs old. A majority of people responding reside in the 49401 zip code (98%) and have kids under the age of 18 (72%). 93% of the community are "Very Supportive" and "Supportive" of creating a connected non-motorized path system. 86% of the community are "Very Supportive" and "Supportive" of purchasing land to expand recreation. 77% of people would prefer to be notified of activities/services through social media, 25 people gave personal emails to receive updates. 47% of responders are "Very Satisfied" with the parks system, 37.5% consider themselves "Neutral". There is a large need for more opportunities for age groups other than children, a large majority voted chose "Neutral" or "Dissatisfied" for Seniors, Adults, Teens, and Persons w/ Disabilities. In the next 5 years people consider a township owned aquatic/fitness center to be "Extremely Important" (39%). People want to access rivers/lakes/streams the most, then forests second.

Top 3 Activities at Community Park

1. Playground
2. Walk/Run/Hike
3. Relax and Picnic

Top 5 Reasons People Visit Parks

1. Active/fun
2. Natural Setting

3. Close to Home
4. Playgrounds
5. Quiet/Peaceful

Top 3 Reasons People Don't Use a Park

1. Lack of Activities I Enjoy
2. Lack of Facilities
3. Lack of Awareness of Parks/Programs

Top 10 Activities People Want in Parks

1. Hiking/Walking Trails
2. Swimming
3. Sledding/Tubing
4. Non-motorized Trail Network
5. Restrooms/Drinking Fountains
6. Festivals/Concert
7. Kayak/Canoe Launches
8. Ice Skating
9. Disc Golf
10. Playgrounds

Goals and Objectives

The goals and objectives of this plan stemmed from present conditions, assessment of need, and the feedback from the community.

Goal 1: Develop an Interconnected Non-Motorized Path System

Trails continue to be the trend for communities across West Michigan and the residents of Allendale Charter Township agree. According to the survey 75.5% of residents were very supportive.

Objectives

1. Connect neighborhoods, schools, businesses, to each other and to park properties.
2. Work with the Ottawa County to connect non-motorized paths and sidewalks to the regional non-motorized Idema Explorer's Trail through Allendale Charter Township.
3. Continue to complete and expand the township's sidewalk system making key connections to primary non-motorized routes.

Goal 2: Develop New Parks

With only (1) park and a growing community, the people of Allendale Charter Township are looking for more places for recreation near where they live and work.

Objectives

1. Develop new parks along the proposed non-motorized path system described in Goal 1.
2. Locate parks on both sides of M-45
3. Develop parks of different sizes and with new uses.
4. Utilize grant opportunities and public and private sources to acquire land.

Goal 3: Improve and expand facilities at Community Park

Community Park is a well-used, and well-loved park in Allendale Charter Township. Continuing to prioritize park improvements, maintenance, and replacement of existing park features is a priority over the next 5 years.

Objectives

1. Develop a continuous walking loop that can be used by families, joggers, walkers, and visitors.
2. Continue to provide greater levels of accessibility.
3. Continue to develop places for picnicking and relaxation.
4. Develop a long-range capital improvement plan to fund the repair and replacement of park assets.

Action Program

Goal 1: Develop an Interconnected Non-Motorized Path System

Action Plans:

- Develop a Non-Motorized Capital Improvement Plan to prioritize trail development, operations, and maintenance. Identify projected costs and funding sources.
- Continue to build out the sidewalk system.
- Coordinate with local governments to incorporate path improvements with developments, county road construction, and utility projects.

Goal 2: Develop New Parks

Action Plans:

- Purchase one (1) 40 ac or larger mostly wooded or floodplain property on the north side of M-45 near or adjacent the Non-Motorized Path Master Plan route for the development of a nature-based park facility.
- Purchase two (2) 5 ac or less properties near existing neighborhoods for the development of smaller neighborhood parks.
- Partner with Ottawa County to purchase trailhead property along 68th Ave for the Idema Explorer's Trail.
- Continue to pursue opportunities for additional park acquisition.

Goal 3: Improve and expand facilities at Community Park

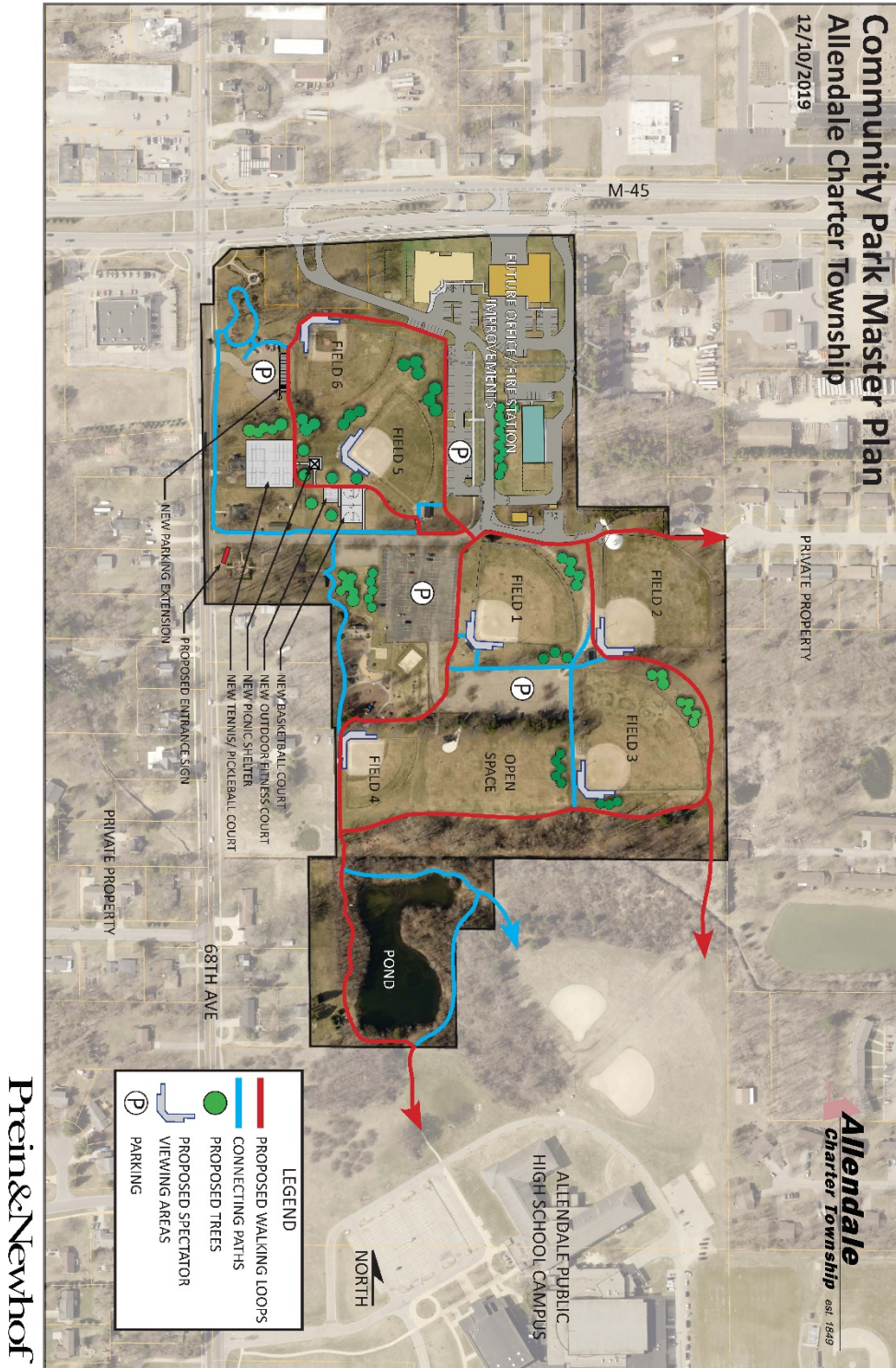
Action Plans:

- Construct and universally accessible paved walking loop as shown in the Community Park Master Plan.
- Construct concrete bleacher and dugout pads at existing ballfields per ADA standards.
- Construct universally accessible connector paths from barrier free parking spaces to ballfield spectator areas.
- Install new trees, picnic tables, and trash/recycling in open spaces to facilitate picnicking.
- Install new well for sports field irrigation

APPENDICES

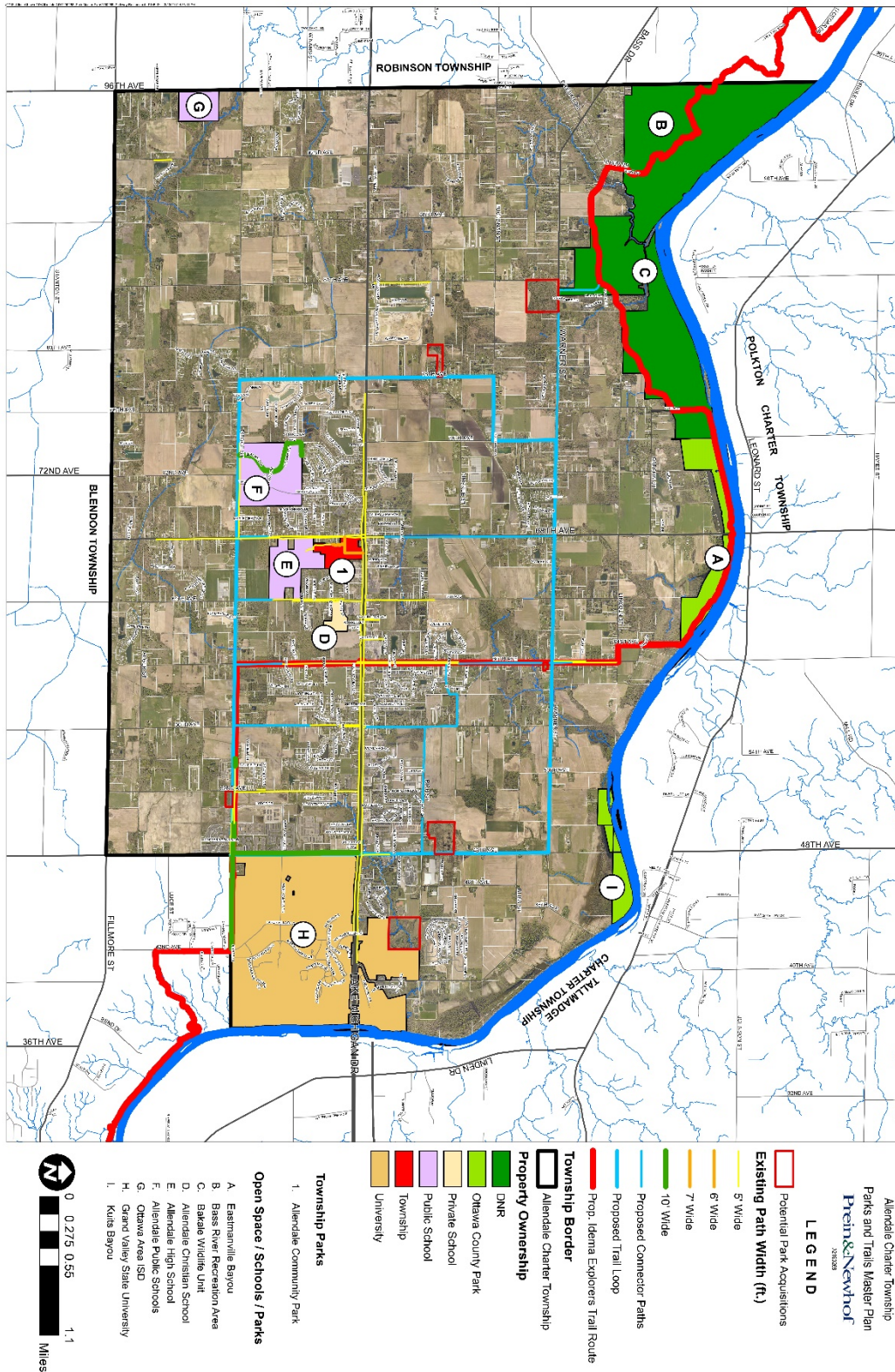
Appendix A

Community Park Master Plan



Appendix B

Allendale Charter Township Parks & Trails Master Plan



Appendix C

Supplemental DNR Attachments

Survey Results

Open House Feedback (added at a later date)

Public Notices (some added at a later date)

Public Meeting Minutes (added at a later date)

Post Completion Self-Certification Reports (added at a later date)

Public Hearing Feedback (added at a later date)

Formal Resolution to Adopt the Plan (added at a later date)

DNR Community Park, Recreation, Open-Space, and Greenway Plan Certification

Checklist (added at a later date)



NOTICE

ALLENDALE CHARTER TOWNSHIP PARKS AND RECREATION 2020-2024 FIVE YEAR PLAN SURVEY

Allendale Charter Township is updating its Parks and Recreation Plan,
and we want to hear from you!

Please follow the link below to an online survey. If you would rather print the
survey and return it to the Township office, please download the PDF [here](#).
Paper copies are also available at the Township office.

The survey will be accepting responses from November 1 - December 6, 2019.

<https://www.surveymonkey.com/r/AllendaleParksandRec>



Q2 How long have you lived in Allendale Charter Township?

Answered: 89 Skipped: 0

#	RESPONSES	DATE
1	4 Years	11/29/2019 6:05 PM
2	5	11/28/2019 3:50 AM
3	15 yrs	11/27/2019 11:36 PM
4	20 years	11/27/2019 3:38 PM
5	4 months	11/27/2019 12:06 PM
6	2 years	11/27/2019 3:03 AM
7	35 yrs	11/27/2019 2:05 AM
8	7 months	11/27/2019 2:03 AM
9	4 months	11/27/2019 1:34 AM
10	8 years	11/27/2019 12:42 AM
11	2 years	11/27/2019 12:39 AM
12	6 years	11/26/2019 11:54 PM
13	4 months	11/26/2019 11:37 PM
14	1 year	11/26/2019 11:34 PM
15	9 years	11/26/2019 11:19 PM
16	Almost 1 year.	11/26/2019 10:45 PM
17	25 years	11/26/2019 10:00 PM
18	40 years	11/26/2019 9:35 PM
19	2 years	11/26/2019 9:26 PM
20	3.5 years	11/26/2019 9:20 PM
21	Entire life	11/26/2019 9:09 PM
22	5 years	11/26/2019 8:55 PM
23	28 years	11/26/2019 2:07 PM
24	16	11/23/2019 7:19 PM
25	3 years	11/20/2019 7:32 PM
26	5 Years	11/19/2019 2:18 AM
27	5 years	11/9/2019 3:38 AM
28	3 years	11/8/2019 3:23 PM
29	5 years	11/8/2019 12:03 AM
30	6 years	11/7/2019 11:52 PM
31	6 years 3 months	11/7/2019 9:16 PM
32	11.5 years	11/7/2019 8:40 PM
33	2 years	11/5/2019 12:17 PM
34	19 years	11/5/2019 2:49 AM
35	18 years	11/5/2019 12:43 AM

Allendale Charter Township Parks and Recreation

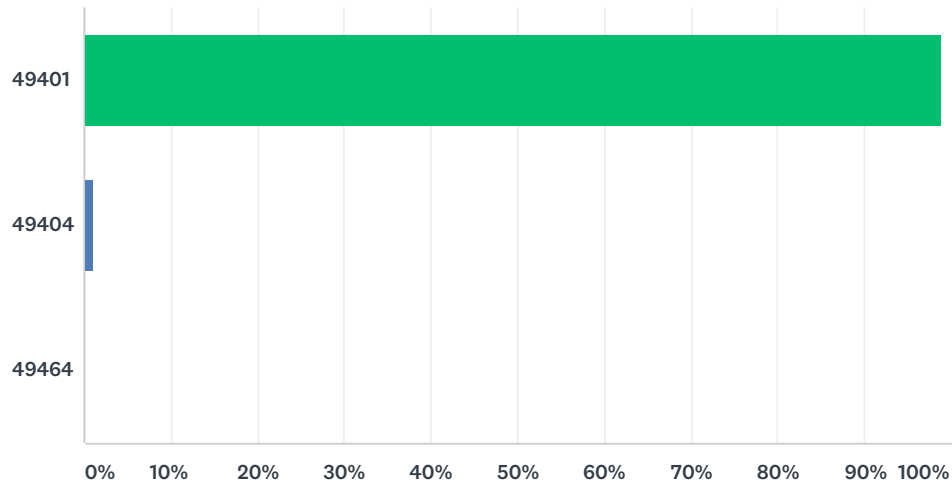
36	3 years	11/5/2019 12:33 AM
37	14 Years	11/4/2019 11:59 AM
38	23yrs	11/4/2019 1:17 AM
39	14 years	11/4/2019 1:06 AM
40	4	11/4/2019 12:09 AM
41	18	11/3/2019 1:37 AM
42	18	11/2/2019 11:02 PM
43	12 years	11/2/2019 7:47 PM
44	4	11/2/2019 3:08 PM
45	22 years	11/2/2019 12:55 PM
46	45 yrs	11/2/2019 2:36 AM
47	12 years	11/2/2019 2:19 AM
48	4 years	11/2/2019 2:10 AM
49	15 years	11/2/2019 12:10 AM
50	15 years	11/1/2019 11:47 PM
51	19 years	11/1/2019 11:40 PM
52	16 yrs	11/1/2019 11:11 PM
53	16 years	11/1/2019 10:44 PM
54	19 years	11/1/2019 8:40 PM
55	34 years	11/1/2019 8:12 PM
56	6 almost 7 years	11/1/2019 7:07 PM
57	15 years	11/1/2019 7:01 PM
58	12 years	11/1/2019 6:44 PM
59	16 years	11/1/2019 6:34 PM
60	18 years	11/1/2019 6:12 PM
61	14 years	11/1/2019 6:05 PM
62	15 years	11/1/2019 6:03 PM
63	41 years	11/1/2019 5:56 PM
64	1 year	11/1/2019 5:34 PM
65	6yrs	11/1/2019 5:32 PM
66	20 years	11/1/2019 1:17 PM
67	5 years	11/1/2019 12:04 PM
68	4 years	11/1/2019 11:54 AM
69	32 years	11/1/2019 11:49 AM
70	17	11/1/2019 11:39 AM
71	12 years	11/1/2019 10:55 AM
72	15 yearsp	11/1/2019 10:00 AM
73	10 years	11/1/2019 5:19 AM
74	17 years	11/1/2019 2:59 AM
75	1 1/2 years	11/1/2019 2:52 AM
76	1 year	11/1/2019 2:37 AM

Allendale Charter Township Parks and Recreation

77	13 years	10/31/2019 11:29 PM
78	9 years	10/31/2019 11:25 PM
79	52 years	10/31/2019 11:15 PM
80	28 years	10/31/2019 10:49 PM
81	19 years	10/31/2019 10:45 PM
82	23 years	10/31/2019 10:43 PM
83	31 years	10/31/2019 10:36 PM
84	19 years	10/31/2019 10:33 PM
85	8 years	10/31/2019 10:32 PM
86	13+ years	10/31/2019 10:20 PM
87	15 years	10/31/2019 9:01 PM
88	9 years	10/31/2019 8:52 PM
89	4 years	10/31/2019 8:47 PM

Q3 In what ZIP code do you reside?

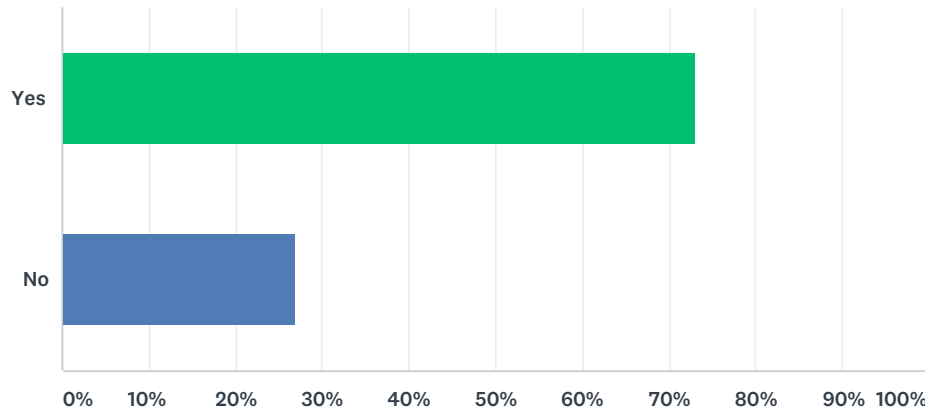
Answered: 89 Skipped: 0



ANSWER CHOICES	RESPONSES	
49401	98.88%	88
49404	1.12%	1
49464	0.00%	0
TOTAL		89

Q4 Do you have children under the age of 18?

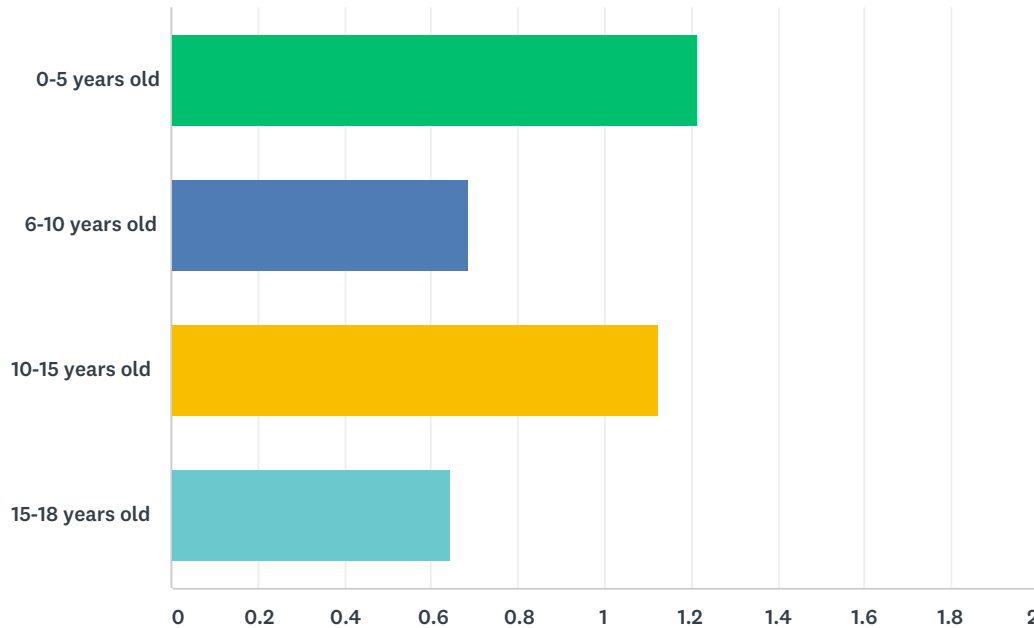
Answered: 89 Skipped: 0



ANSWER CHOICES	RESPONSES	
Yes	73.03%	65
No	26.97%	24
TOTAL		89

Q5 How many children, by age, live in your household?

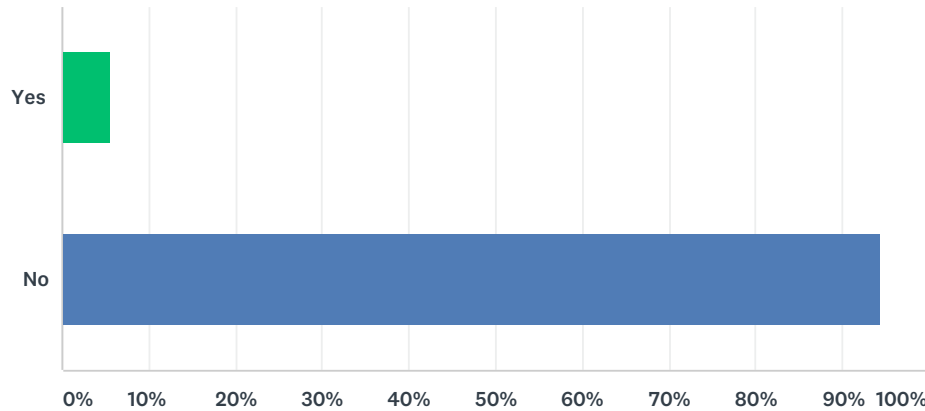
Answered: 72 Skipped: 17



ANSWER CHOICES	AVERAGE NUMBER	TOTAL NUMBER	RESPONSES
0-5 years old	1	57	47
6-10 years old	1	26	38
10-15 years old	1	45	40
15-18 years old	1	20	31
Total Respondents: 72			

Q6 Is there anyone living with you who are elderly, disabled, or with special needs?

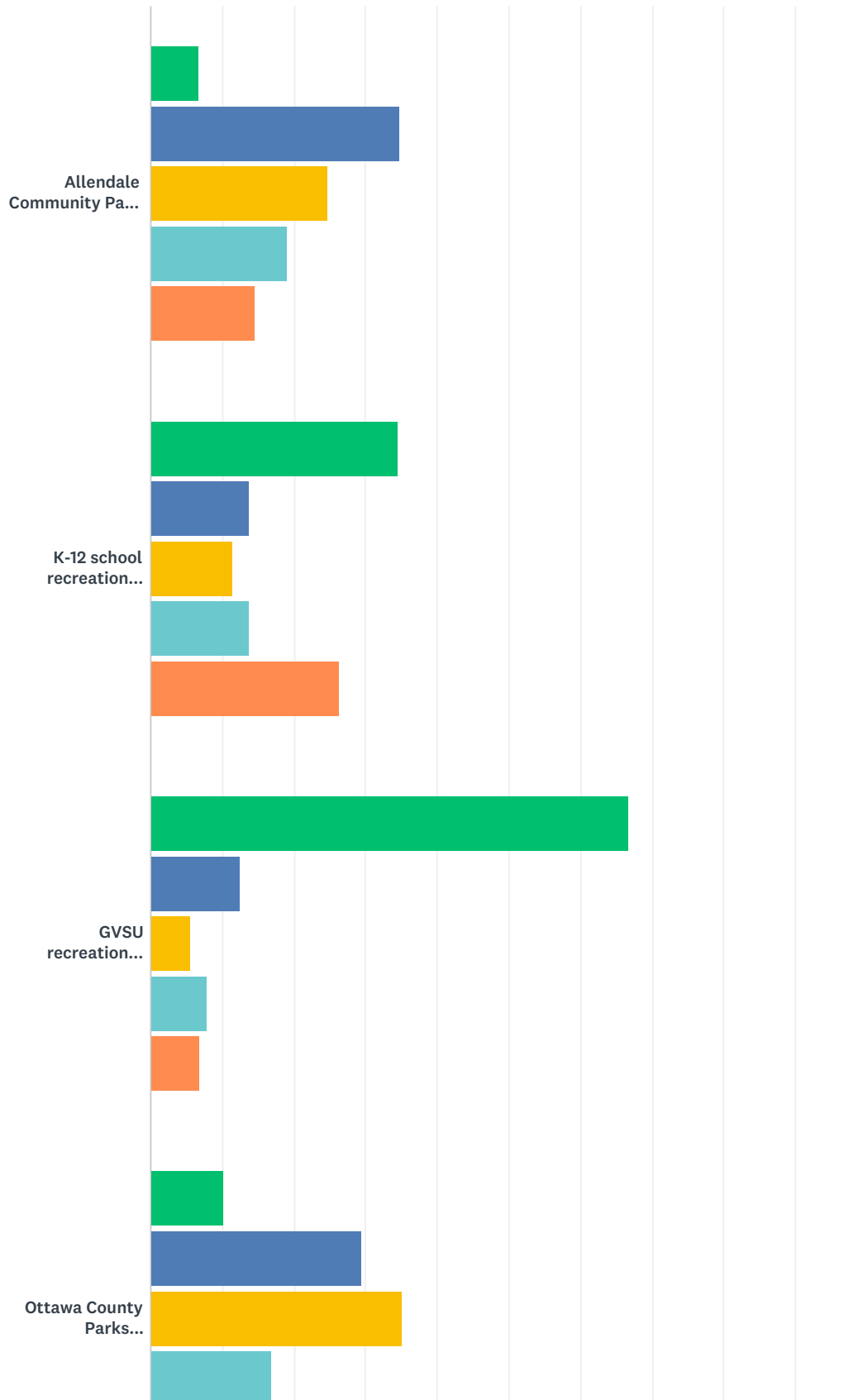
Answered: 89 Skipped: 0



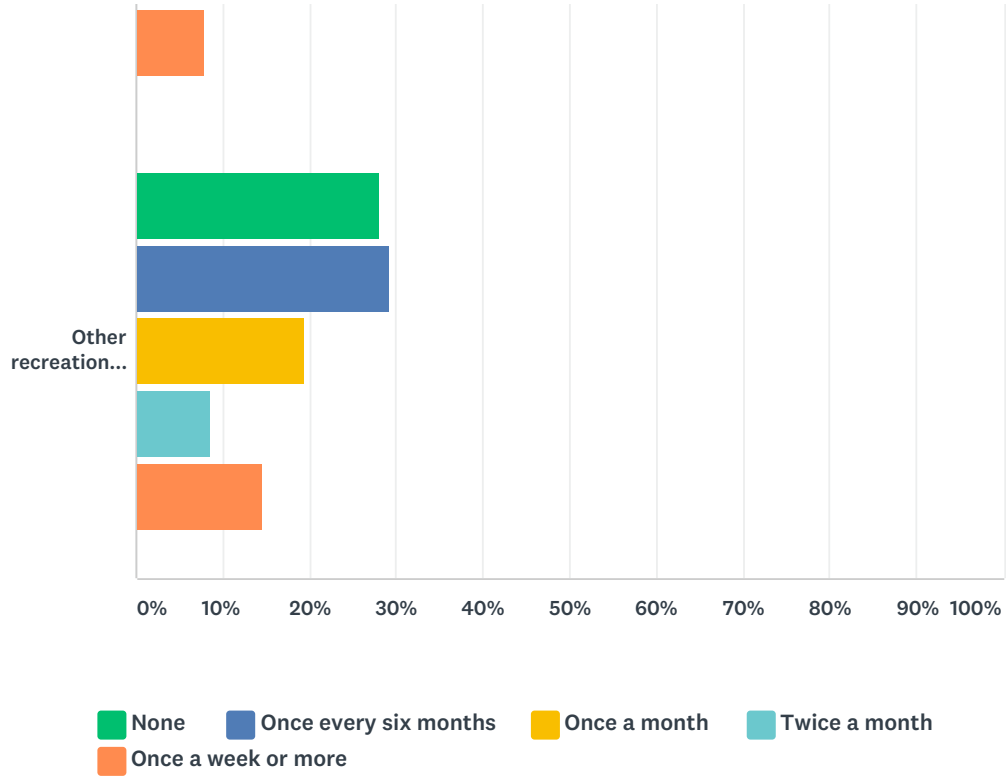
ANSWER CHOICES	RESPONSES	
Yes	5.62%	5
No	94.38%	84
TOTAL		89

Q7 How often do you visit the following recreation facilities? (See

Answered: 89 Skipped: 0



Allendale Charter Township Parks and Recreation

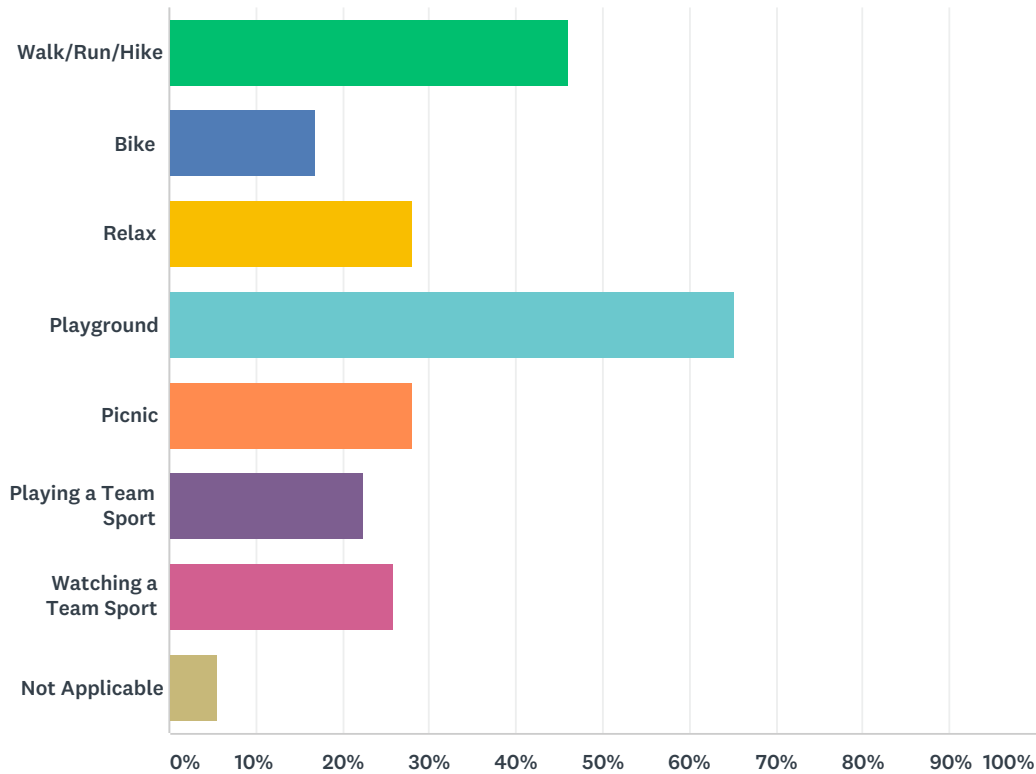


	NONE	ONCE EVERY SIX MONTHS	ONCE A MONTH	TWICE A MONTH	ONCE A WEEK OR MORE	TOTAL	WEIGHTED AVERAGE
Allendale Community Park (located at 68th St. & M-45)	6.74% 6	34.83% 31	24.72% 22	19.10% 17	14.61% 13	89	3.00
K-12 school recreation facilities	34.48% 30	13.79% 12	11.49% 10	13.79% 12	26.44% 23	87	2.84
GVSU recreation facilities	66.67% 58	12.64% 11	5.75% 5	8.05% 7	6.90% 6	87	1.76
Ottawa County Parks Facilities	10.23% 9	29.55% 26	35.23% 31	17.05% 15	7.95% 7	88	2.83
Other recreation facilities	28.05% 23	29.27% 24	19.51% 16	8.54% 7	14.63% 12	82	2.52

#	COMMENTS	DATE
1	Planet Fitness Standale	11/1/2019 7:01 PM
2	All of these are probably closer to every 2 or 3 months.	11/1/2019 6:03 PM

Q8 What activities do you do most at Allendale Community Park?

Answered: 89 Skipped: 0



ANSWER CHOICES	RESPONSES	
Walk/Run/Hike	46.07%	41
Bike	16.85%	15
Relax	28.09%	25
Playground	65.17%	58
Picnic	28.09%	25
Playing a Team Sport	22.47%	20
Watching a Team Sport	25.84%	23
Not Applicable	5.62%	5
Total Respondents: 89		

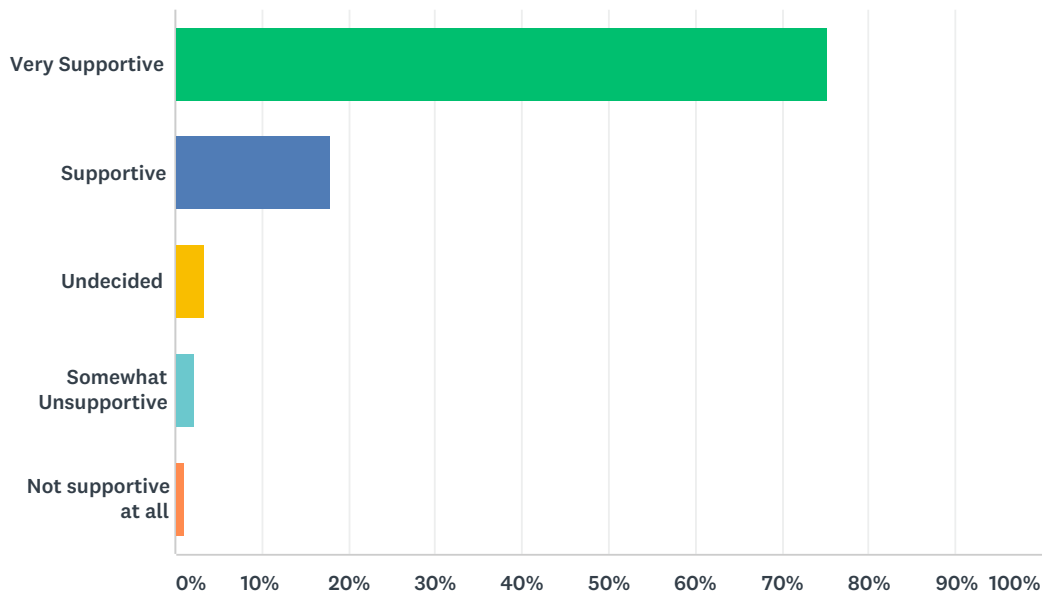
#	OTHER (PLEASE SPECIFY) OR COMMENTS	DATE
1	Car shows	11/27/2019 2:05 AM
2	Stroller Strides	11/27/2019 1:34 AM
3	Splash Pad	11/26/2019 9:26 PM
4	Pickleball	11/7/2019 8:40 PM
5	Splash pad	11/5/2019 12:33 AM
6	Special Events	11/4/2019 11:59 AM

Allendale Charter Township Parks and Recreation

7	Walk/play with my dog	11/4/2019 12:09 AM
8	Pickleball	11/2/2019 12:55 PM
9	Mainly township festivals	11/2/2019 2:19 AM
10	Movies and concerts	11/1/2019 11:47 PM
11	Cross country ski and sledding	11/1/2019 7:01 PM
12	Music in Park; Movies in Park; Fall Festival	11/1/2019 5:34 PM
13	Concerts in the park	10/31/2019 11:25 PM
14	Car show	10/31/2019 11:15 PM
15	4th of July	10/31/2019 10:36 PM
16	Craft fairs, festivals in fall & 4th of july	10/31/2019 8:52 PM

Q9 How supportive are you of Allendale Charter Township creating a connected system of non-motorized paths throughout Allendale Township?

Answered: 89 Skipped: 0



ANSWER CHOICES	RESPONSES	
Very Supportive	75.28%	67
Supportive	17.98%	16
Undecided	3.37%	3
Somewhat Unsupportive	2.25%	2
Not supportive at all	1.12%	1
TOTAL		89

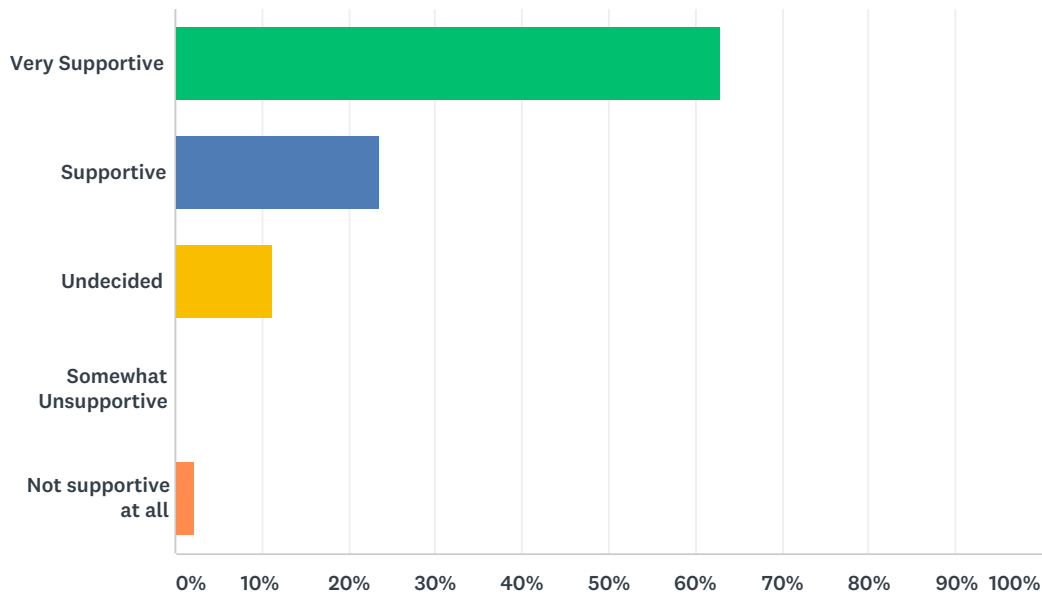
#	COMMENTS	DATE
1	Yes please	11/26/2019 11:37 PM
2	Please hurry!	11/26/2019 9:35 PM
3	I love to have a marked/safe place for me to take my family on hikes.	11/26/2019 9:26 PM
4	This would be such a positive enhancement of the community! I would love to be able to safely access the Fred Meijer Trail off of M-45.	11/26/2019 8:55 PM
5	Hard to know if I support this if there is no proposal. Is it close to schools? Does it travel through LDR or HDR areas? Connect GVSU to rest of community? All would need answers before I could determine level of support.	11/8/2019 3:23 PM
6	We try to ride as a family from our rural house 2 miles to the park and it never feels safe.	11/7/2019 9:16 PM
7	I don't feel as though the cost would be worth it	11/2/2019 3:08 PM
8	Please make this happen!!	11/1/2019 7:01 PM

Allendale Charter Township Parks and Recreation

9	As long as you make sure the trails include paths to the park from Highland Trails East and West and the subdivision on White Pine Drive	11/1/2019 6:34 PM
10	I'd like to see a pedestrian light near Family Fare/Lifestream crosswalk that could be activated when trying to cross Lk Mi Dr. This is also a good spot for those going to the park.	11/1/2019 6:12 PM
11	It should tie in with Ottawa County's Grand River Greenway/Idema Explorers Trail.	11/1/2019 12:04 PM

Q10 How supportive are you of Allendale Charter Township purchasing land to be able to expand recreational opportunities?

Answered: 89 Skipped: 0

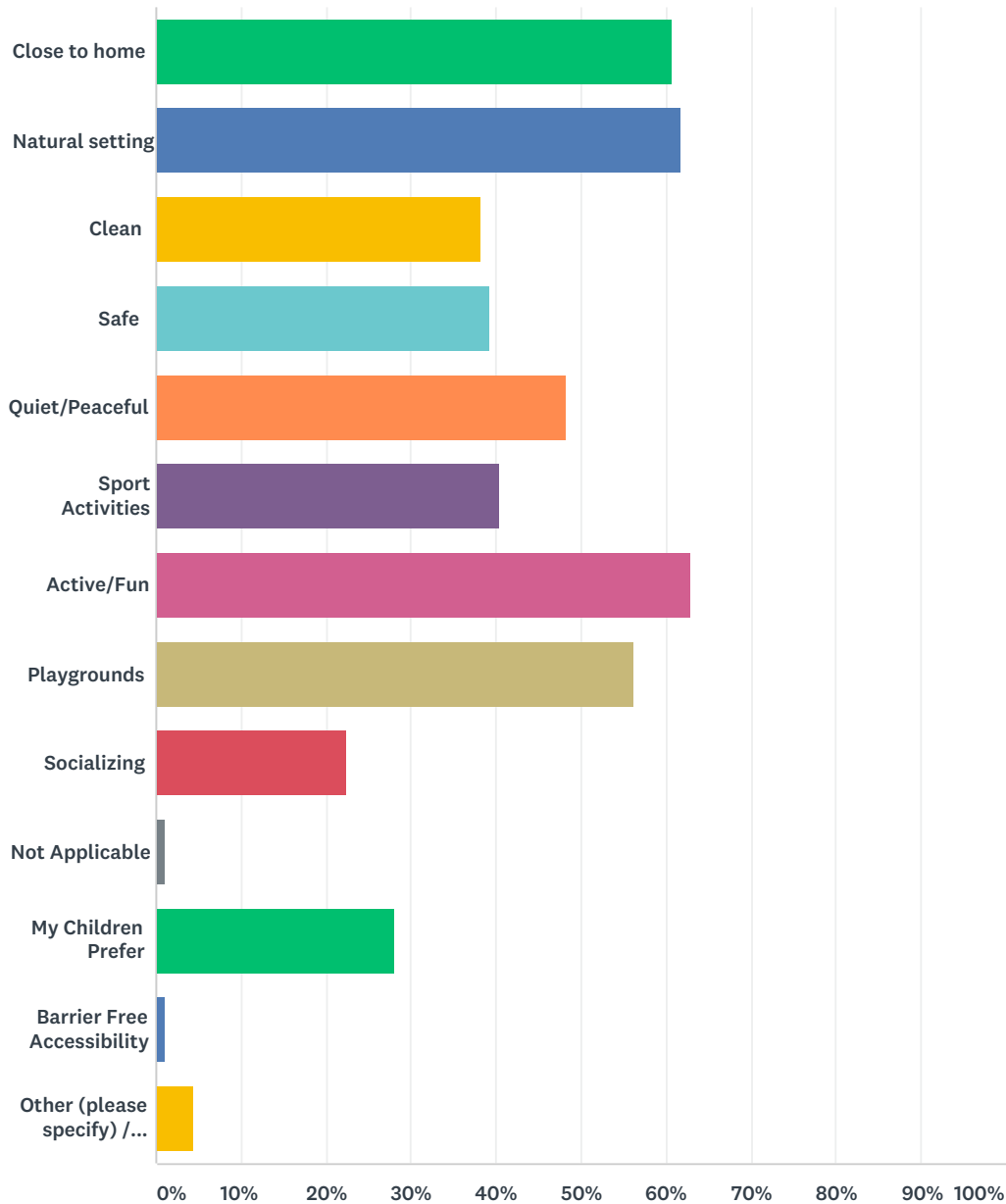


ANSWER CHOICES	RESPONSES	
Very Supportive	62.92%	56
Supportive	23.60%	21
Undecided	11.24%	10
Somewhat Unsupportive	0.00%	0
Not supportive at all	2.25%	2
TOTAL		89

#	COMMENTS	DATE
1	Won't be cheaper later	11/26/2019 11:37 PM
2	The land on 52 and pierce would be perfect	11/8/2019 12:03 AM
3	Need to know the particulars.	11/2/2019 12:55 PM
4	Depending on what recreational activities it would be for	11/1/2019 5:56 PM
5	Again it should tie in with what Ottawa County is doing with the Grand River Greenway/Idema Explorers Trail.	11/1/2019 12:04 PM
6	An indoor rec/community center would be amazing	11/1/2019 10:55 AM
7	It would depend on what it would be used for.	10/31/2019 10:49 PM

Q11 Why do you visit parks in general? Check all that apply:

Answered: 89 Skipped: 0



ANSWER CHOICES	RESPONSES	
Close to home	60.67%	54
Natural setting	61.80%	55
Clean	38.20%	34
Safe	39.33%	35
Quiet/Peaceful	48.31%	43
Sport Activities	40.45%	36

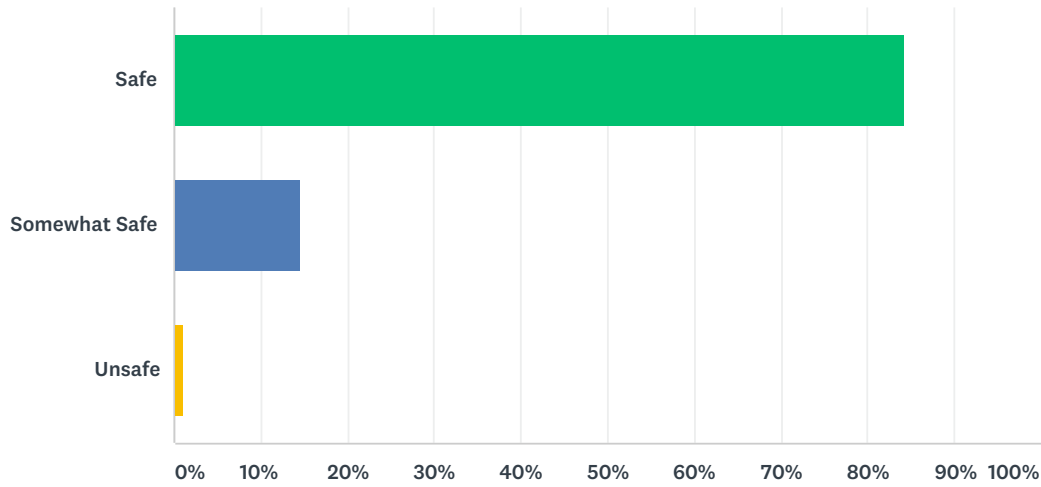
Allendale Charter Township Parks and Recreation

Active/Fun	62.92%	56
Playgrounds	56.18%	50
Socializing	22.47%	20
Not Applicable	1.12%	1
My Children Prefer	28.09%	25
Barrier Free Accessibility	1.12%	1
Other (please specify) / Comments	4.49%	4
Total Respondents: 89		

#	OTHER (PLEASE SPECIFY) / COMMENTS	DATE
1	Veiw wild life.	11/27/2019 2:05 AM
2	Exercising my dogs	11/26/2019 9:09 PM
3	Walk my dog	11/4/2019 12:09 AM
4	Splash pad	10/31/2019 8:52 PM

Q12 How safe do you feel at these parks?

Answered: 89 Skipped: 0

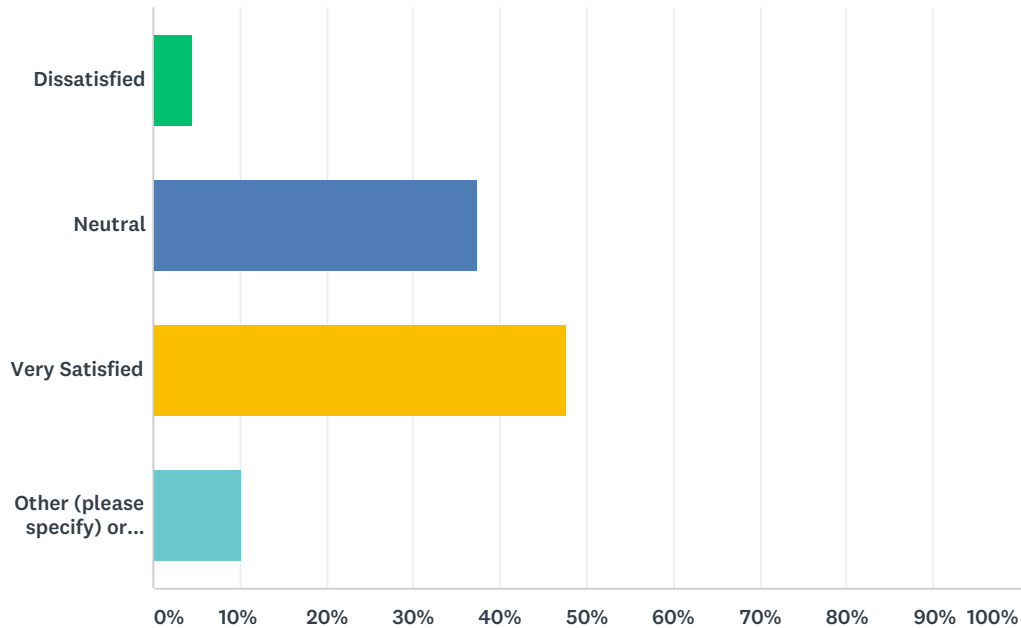


ANSWER CHOICES	RESPONSES	
Safe	84.27%	75
Somewhat Safe	14.61%	13
Unsafe	1.12%	1
TOTAL		89

#	COMMENTS	DATE
1	As safe as they can be.	11/1/2019 6:05 PM
2	Need surveillance or cameras	10/31/2019 9:01 PM

Q13 Overall, how satisfied are you with the parks system?

Answered: 88 Skipped: 1

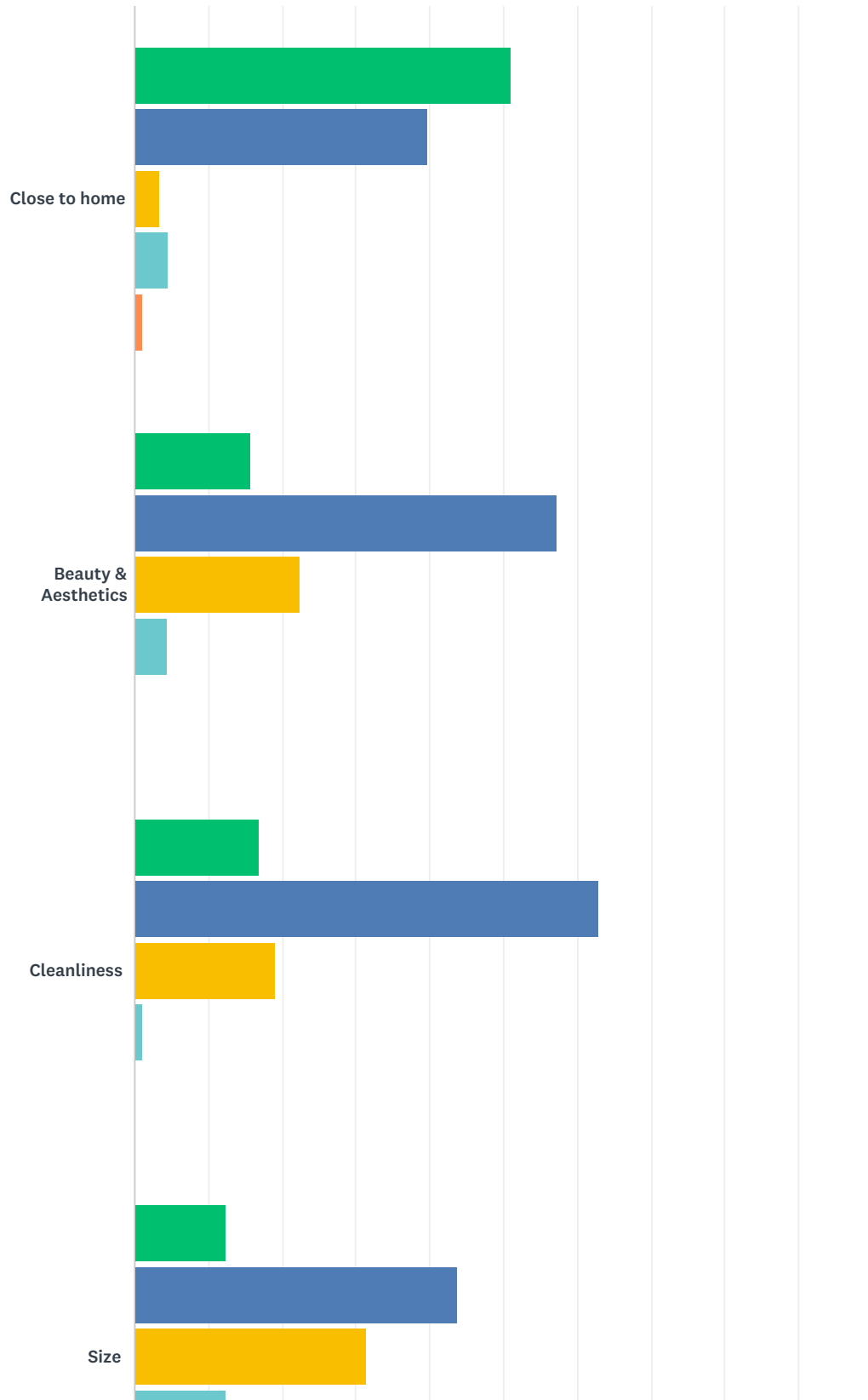


ANSWER CHOICES	RESPONSES	
Dissatisfied	4.55%	4
Neutral	37.50%	33
Very Satisfied	47.73%	42
Other (please specify) or Comment	10.23%	9
TOTAL		88

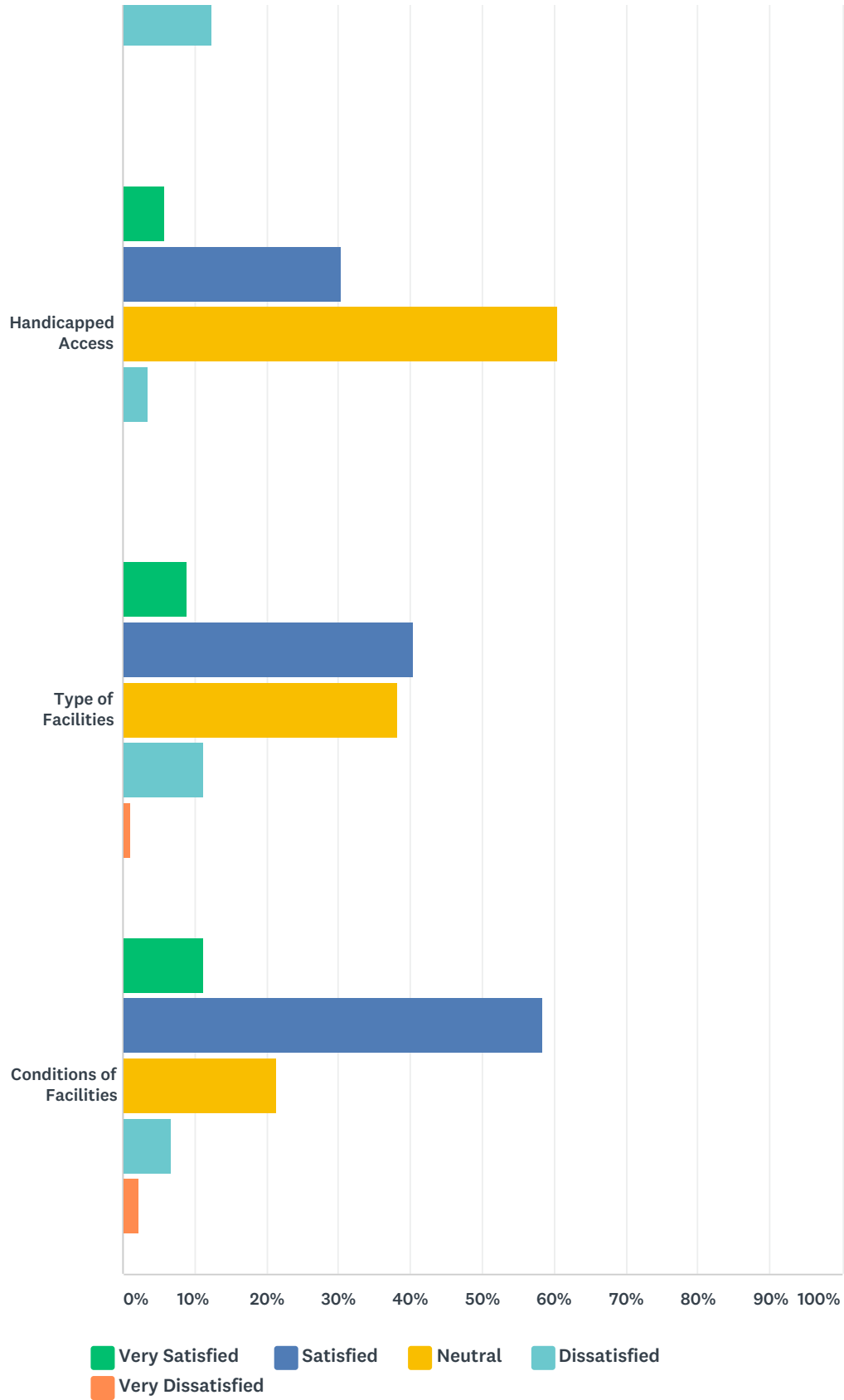
#	OTHER (PLEASE SPECIFY) OR COMMENT	DATE
1	Would like to new basketball court plus second park	11/27/2019 3:38 PM
2	Could be updated	11/26/2019 11:19 PM
3	Would love more options for stroller paths that aren't on major streets	11/26/2019 9:20 PM
4	The township park system? You referenced others above. I think Allendale could be improved with more parks and trails.	11/26/2019 8:55 PM
5	We spend way to much on baseball. Field not used enough to justify.	11/26/2019 2:07 PM
6	Would love a skate park to be built. Have to bring kids to grand haven for them to use a skate park	11/2/2019 12:10 AM
7	A trail connecting parks and Allendale to the Lakeshore and downtown GR would be amazing	11/1/2019 7:01 PM
8	Needs alot of updating	11/1/2019 5:56 PM
9	Somewhat satisfied	11/1/2019 10:00 AM

Q14 How satisfied are you with the following items related to Allendale Charter Township owned Parks & recreation facilities?

Answered: 89 Skipped: 0



Allendale Charter Township Parks and Recreation



	VERY SATISFIED	SATISFIED	NEUTRAL	DISSATISFIED	VERY DISSATISFIED	TOTAL	WEIGHTED AVERAGE
Close to home	51.14% 45	39.77% 35	3.41% 3	4.55% 4	1.14% 1	88	4.35

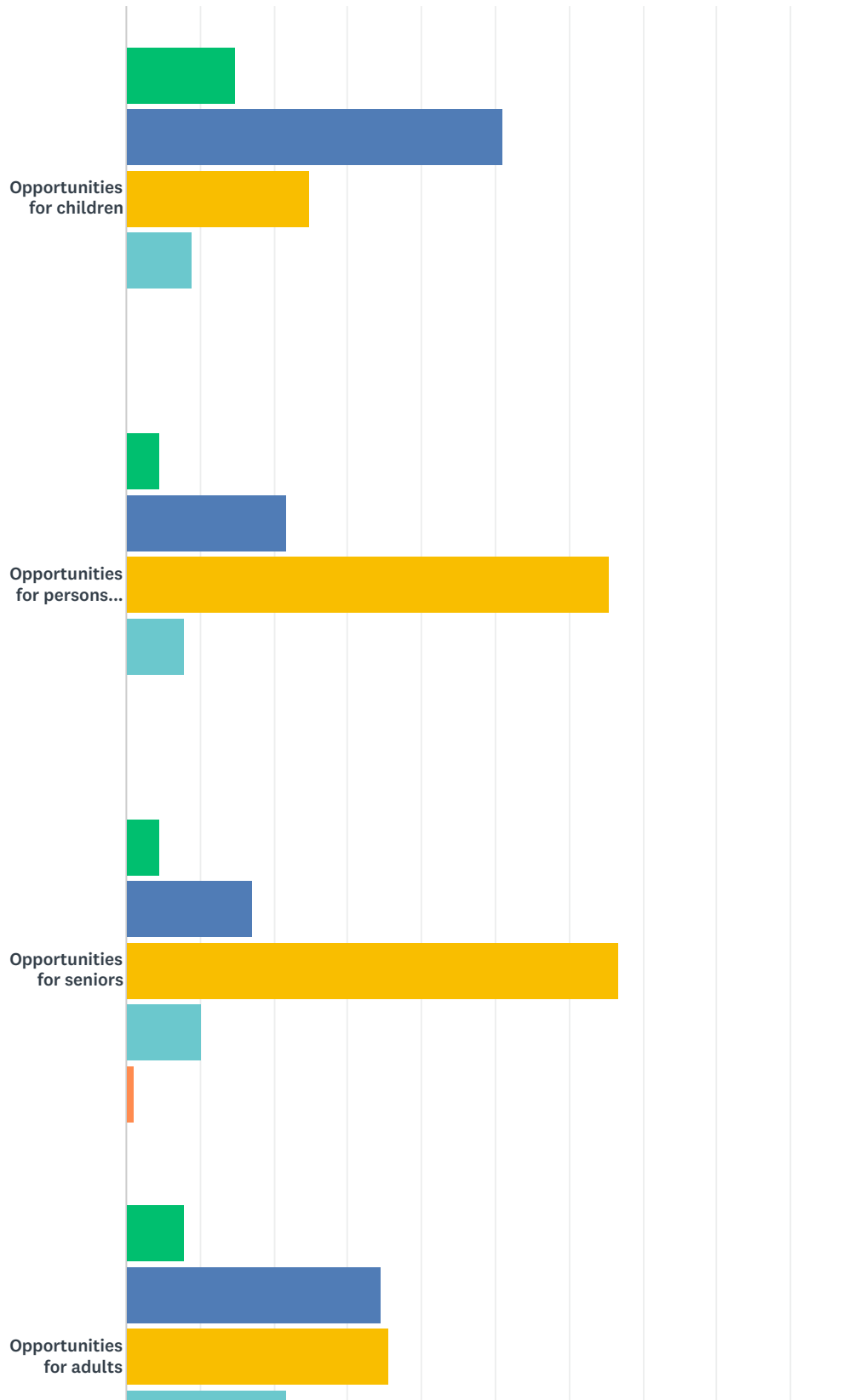
Allendale Charter Township Parks and Recreation

Beauty & Aesthetics	15.73% 14	57.30% 51	22.47% 20	4.49% 4	0.00% 0	89	3.84
Cleanliness	16.85% 15	62.92% 56	19.10% 17	1.12% 1	0.00% 0	89	3.96
Size	12.36% 11	43.82% 39	31.46% 28	12.36% 11	0.00% 0	89	3.56
Handicapped Access	5.81% 5	30.23% 26	60.47% 52	3.49% 3	0.00% 0	86	3.38
Type of Facilities	8.99% 8	40.45% 36	38.20% 34	11.24% 10	1.12% 1	89	3.45
Conditions of Facilities	11.24% 10	58.43% 52	21.35% 19	6.74% 6	2.25% 2	89	3.70

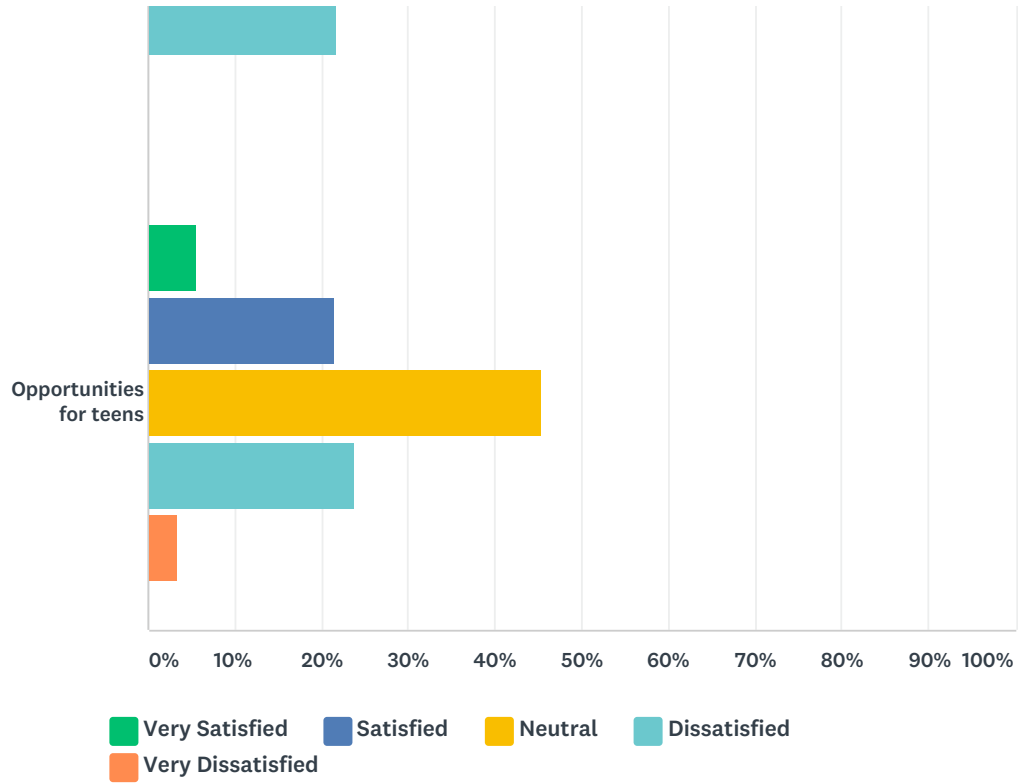
#	COMMENTS	DATE
1	The deck overlooking the pond between the park and school needs some fixing	11/26/2019 9:35 PM
2	We are grateful to be less than a mile from the Community Park on 68th Avenue. We visit it very often. That said, there are improvements that can be made to the park. When we do organized classes for the kids, we often go through Zeeland Recreation, it would be great to have an option closer to home for things like swim lessons, dance, etc.	11/26/2019 8:55 PM
3	Looking forward to new pickleball courts.	11/2/2019 12:55 PM
4	It would be nice if the ball fields were easier to get to if you have a walker or wheelchair.	11/1/2019 7:07 PM
5	Need restrooms by baseball field 3, need updates restrooms by playground, need to make sure there is soap in them all the time	11/1/2019 6:34 PM
6	Needs lots of updating, some facilities are quite old	11/1/2019 5:56 PM

Q15 How satisfied are you with the availability of the recreation opportunities at Allendale Charter Township owned Parks Facilities?

Answered: 89 Skipped: 0



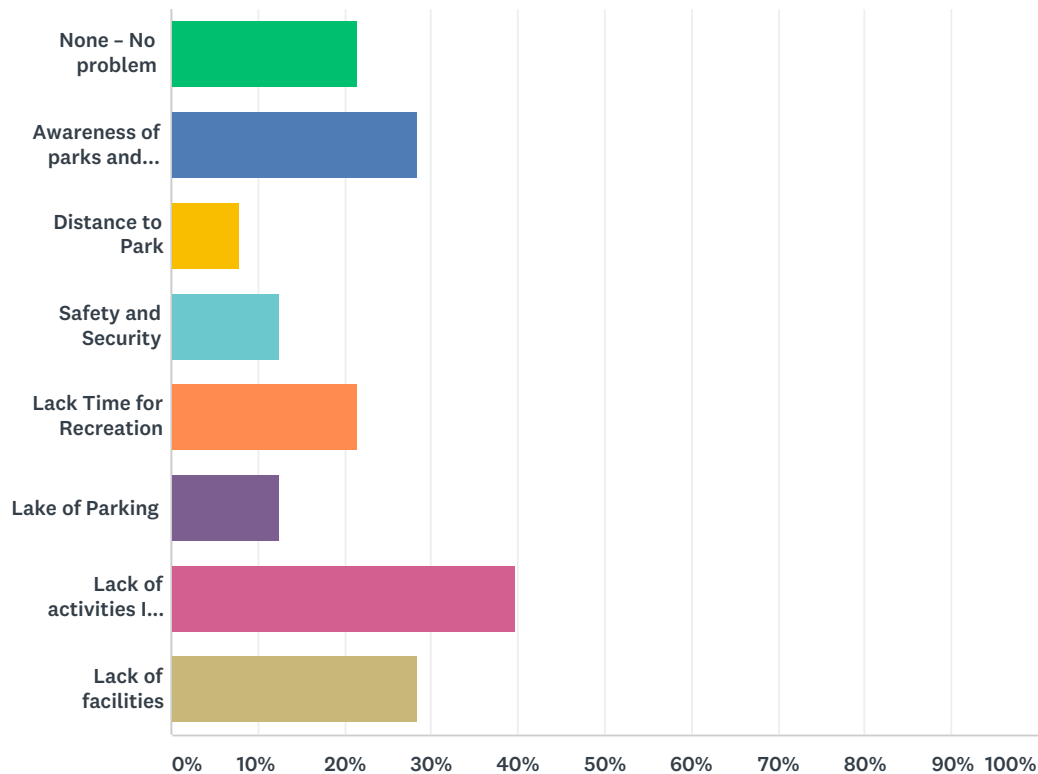
Allendale Charter Township Parks and Recreation



	VERY SATISFIED	SATISFIED	NEUTRAL	DISSATISFIED	VERY DISSATISFIED	TOTAL	WEIGHTED AVERAGE
Opportunities for children	14.77% 13	51.14% 45	25.00% 22	9.09% 8	0.00% 0	88	3.72
Opportunities for persons with disabilities	4.60% 4	21.84% 19	65.52% 57	8.05% 7	0.00% 0	87	3.23
Opportunities for seniors	4.60% 4	17.24% 15	66.67% 58	10.34% 9	1.15% 1	87	3.14
Opportunities for adults	8.05% 7	34.48% 30	35.63% 31	21.84% 19	0.00% 0	87	3.29
Opportunities for teens	5.68% 5	21.59% 19	45.45% 40	23.86% 21	3.41% 3	88	3.02

Q16 Of the following, please check the items that may prevent you from visiting and using a Allendale Charter Township owned parks facility:

Answered: 88 Skipped: 1



ANSWER CHOICES	RESPONSES	
None – No problem	21.59%	19
Awareness of parks and programs	28.41%	25
Distance to Park	7.95%	7
Safety and Security	12.50%	11
Lack Time for Recreation	21.59%	19
Lack of Parking	12.50%	11
Lack of activities I enjoy	39.77%	35
Lack of facilities	28.41%	25
Total Respondents: 88		

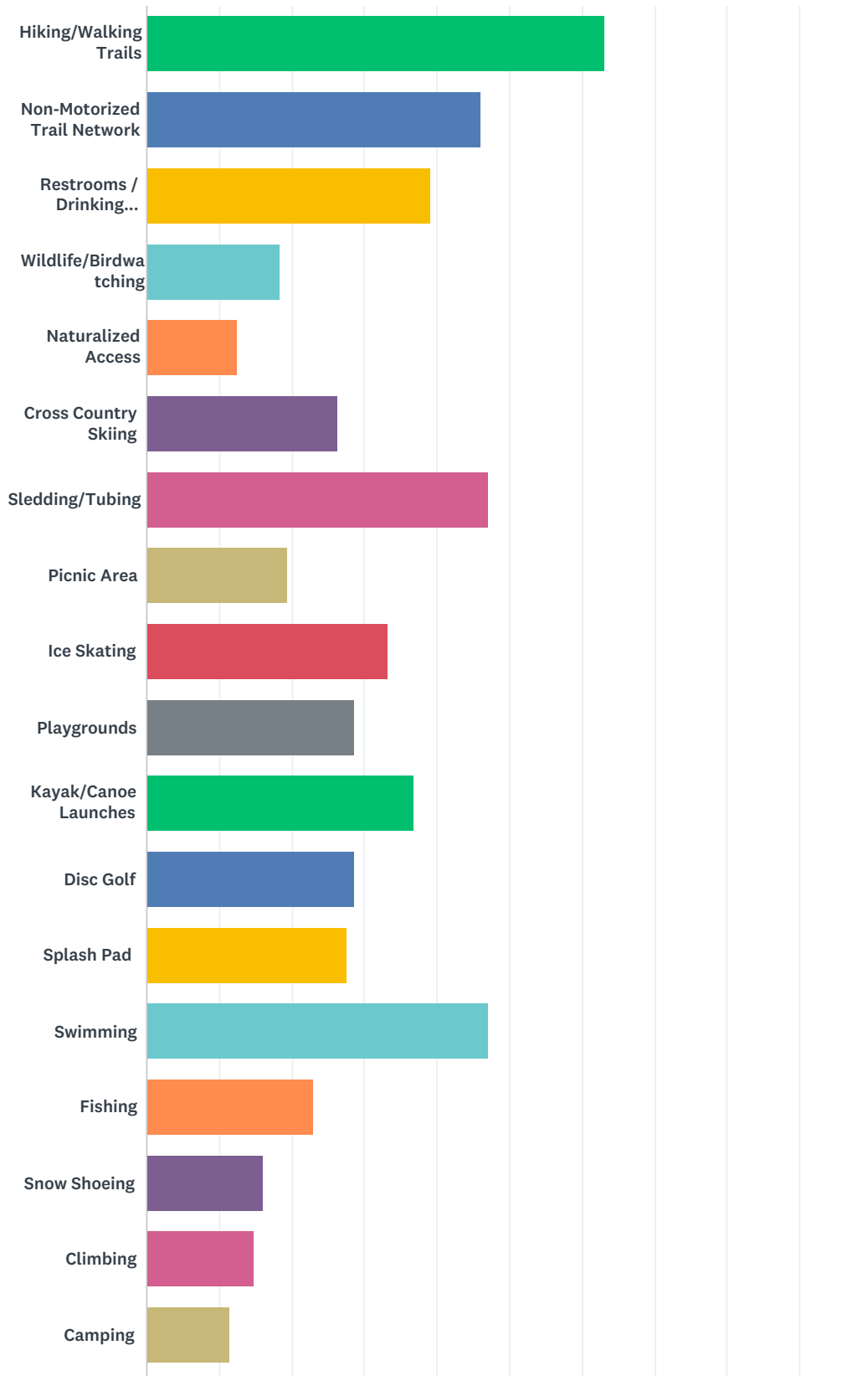
#	OTHER (PLEASE SPECIFY) OR COMMENT	DATE
1	Basketball courts	11/27/2019 3:38 PM
2	Indoor opportunities for winter or fall weather would be so nice!	11/27/2019 12:42 AM
3	68th street park is a bit of a ways for those closer go gvsu	11/8/2019 12:03 AM
4	Lack of dog friendliness	11/4/2019 12:09 AM

Allendale Charter Township Parks and Recreation

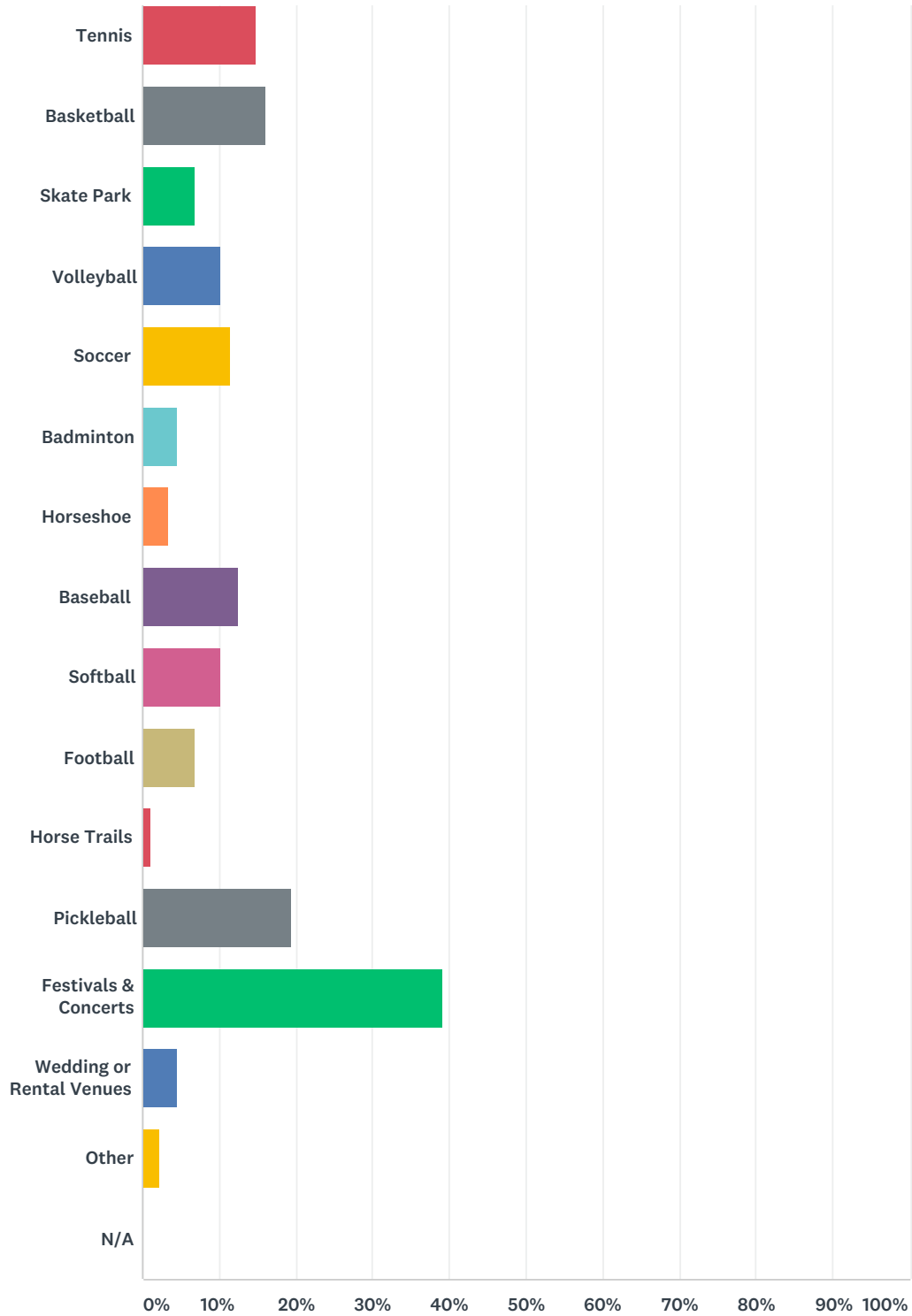
5	Need a community pool	11/1/2019 6:34 PM
6	Really only offer baseball fields and playground	11/1/2019 5:56 PM

Q17 I would use Allendale Charter Township Parks more if more of the following were available.

Answered: 87 Skipped: 2



Allendale Charter Township Parks and Recreation



ANSWER CHOICES	RESPONSES	
Hiking/Walking Trails	63.22%	55
Non-Motorized Trail Network	45.98%	40
Restrooms / Drinking Fountains	39.08%	34
Wildlife/Birdwatching	18.39%	16
Naturalized Access	12.64%	11

Allendale Charter Township Parks and Recreation

Cross Country Skiing	26.44%	23
Sledding/Tubing	47.13%	41
Picnic Area	19.54%	17
Ice Skating	33.33%	29
Playgrounds	28.74%	25
Kayak/Canoe Launches	36.78%	32
Disc Golf	28.74%	25
Splash Pad	27.59%	24
Swimming	47.13%	41
Fishing	22.99%	20
Snow Shoeing	16.09%	14
Climbing	14.94%	13
Camping	11.49%	10
Tennis	14.94%	13
Basketball	16.09%	14
Skate Park	6.90%	6
Volleyball	10.34%	9
Soccer	11.49%	10
Badminton	4.60%	4
Horseshoe	3.45%	3
Baseball	12.64%	11
Softball	10.34%	9
Football	6.90%	6
Horse Trails	1.15%	1
Pickleball	19.54%	17
Festivals & Concerts	39.08%	34
Wedding or Rental Venues	4.60%	4
Other	2.30%	2
N/A	0.00%	0

Total Respondents: 87

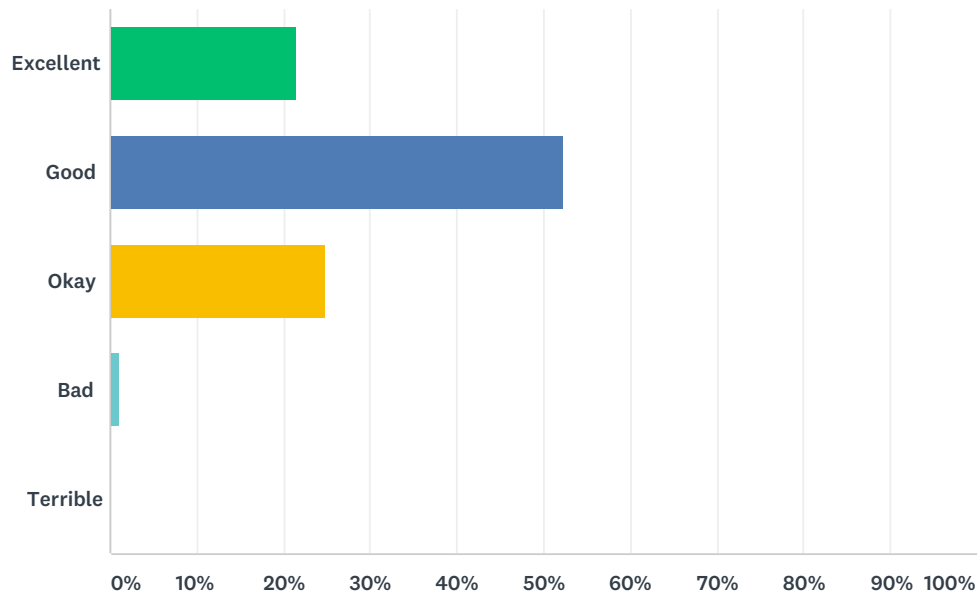
#	COMMENT	DATE
1	Many families would love a fitness center and pool which could be ran by college and Highschool students	11/28/2019 3:50 AM
2	Car shows	11/27/2019 2:05 AM

Allendale Charter Township Parks and Recreation

3	Would love more paved bike paths, or another dog park with water access (pond, creek, or splash pad)	11/26/2019 9:09 PM
4	Would like to see more festivals and concerts.	11/5/2019 12:43 AM
5	Dog park	11/4/2019 12:09 AM
6	Disc golf would be great	11/3/2019 1:37 AM

Q18 Please rate the quality of maintenance at Allendale Charter Township owned Parks and facilities you use.

Answered: 88 Skipped: 1



ANSWER CHOICES	RESPONSES	
Excellent	21.59%	19
Good	52.27%	46
Okay	25.00%	22
Bad	1.14%	1
Terrible	0.00%	0
TOTAL		88

#	COMMENTS	DATE
1	Splash pad is often not working properly and isn't big enough for all the kids who attend.	11/26/2019 9:26 PM
2	Speaking primarily of the pickleball courts	11/7/2019 8:40 PM
3	Restrooms need updating	11/1/2019 6:34 PM
4	They are OK, but need to be updated or refreshed	11/1/2019 6:05 PM
5	Bathrooms are always dirty!!	11/1/2019 5:56 PM
6	Maintenance Dept. does a great job!	10/31/2019 10:49 PM

Q19 What type of additional parks/facilities or open space do you think is most needed in Allendale Charter Township? Where should it be located?

Answered: 45 Skipped: 44

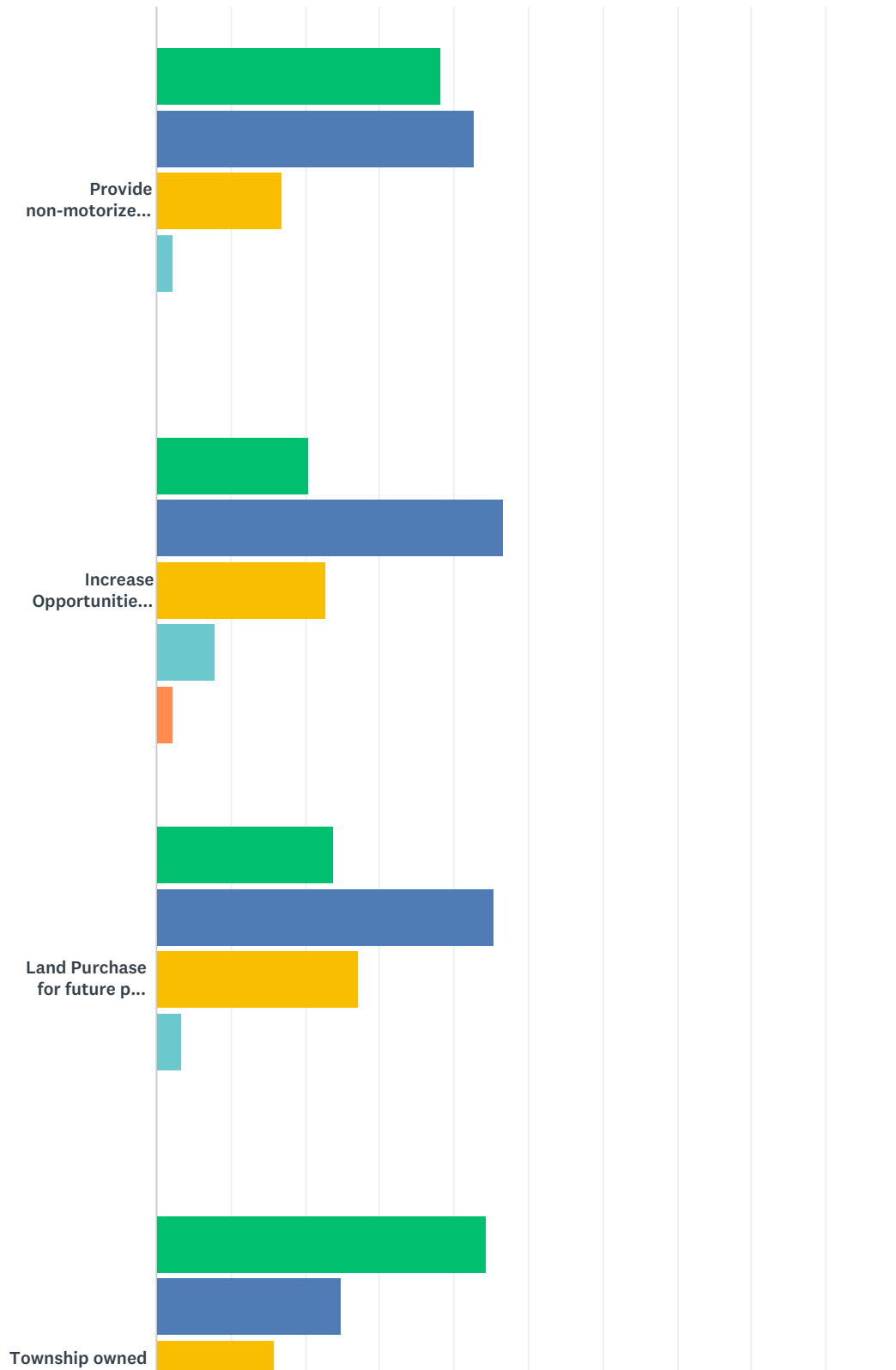
#	RESPONSES	DATE
1	pathways for walking with strollers; play activities suitable for small children	11/29/2019 6:05 PM
2	Nice/big fitness center with daycare, Heated Swimming open Memorial Day - Labor Day, more concerts	11/28/2019 3:50 AM
3	60th Lincoln	11/27/2019 3:38 PM
4	Indoor track and/or facilities, especially for winter.	11/27/2019 3:03 AM
5	None	11/27/2019 2:05 AM
6	Indoor kids play or aquatic center.	11/27/2019 2:03 AM
7	More activities for children! Located indoors for winter use. Also, more recreational activities outdoors at a park.	11/27/2019 1:34 AM
8	Pool, Indoor recreation center	11/27/2019 12:39 AM
9	Larger/updated splash pad/hiking trails for animal watching. South of LMD	11/26/2019 11:54 PM
10	Swimming pool, new playground	11/26/2019 11:19 PM
11	Not surely	11/26/2019 10:45 PM
12	Swimming pool area or larger splash pad, activities for teens	11/26/2019 10:00 PM
13	I'd love to see a nature based park on Leonard Street at Eastmanville farms with climbing/rope swings, etc.	11/26/2019 9:26 PM
14	Definitely need an aquatic and recreational facility with lots of activities for kids! We are severely lacking compared to area neighborhoods. More playground facilities and more opportunities for hiking and stroller trails	11/26/2019 9:20 PM
15	Dedicated tennis courts would be nice. River access/kayak launches. Trail networks.	11/26/2019 8:55 PM
16	More natural areas	11/19/2019 2:18 AM
17	Unsure of what all the parks are, so cannot answer	11/8/2019 3:23 PM
18	Playgrounds and trails	11/8/2019 12:03 AM
19	more hiking/walking trails	11/7/2019 9:16 PM
20	Parking, restrooms	11/5/2019 12:43 AM
21	Pool	11/4/2019 1:06 AM
22	Dog park.	11/4/2019 12:09 AM
23	Skate park; at the township park	11/2/2019 7:47 PM
24	Public swimming pool, ice skating rink, dog park	11/2/2019 2:36 AM
25	Bike paths/non-motorized trails	11/2/2019 2:19 AM
26	Pool/ YMCA / Bigger playground	11/2/2019 2:10 AM
27	Skate park!!!! In the big empty field by the softball fields	11/2/2019 12:10 AM
28	Ice skating at the park	11/1/2019 11:47 PM
29	Something for teens to do. Recreational facility with community events or after school programs for teens and children and adult programs.'	11/1/2019 8:12 PM
30	Connected trails	11/1/2019 6:44 PM

Allendale Charter Township Parks and Recreation

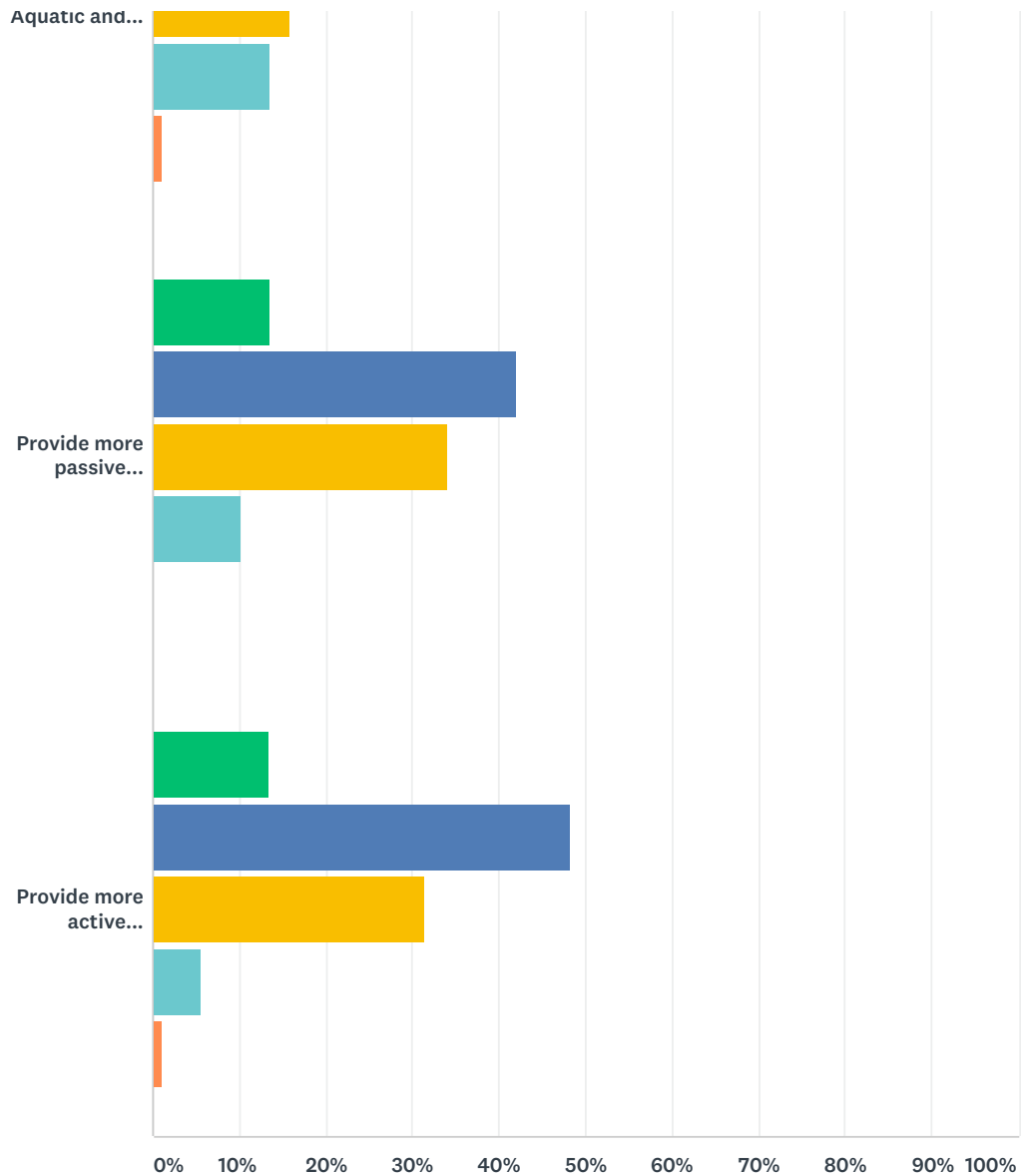
31	Swimming pool - indoor and outdoor	11/1/2019 6:34 PM
32	Skate park may be fun somewhere near to current park.	11/1/2019 6:12 PM
33	A place more towards the East of Allendale, maybe south of Lake MI Dr around 52nd	11/1/2019 6:05 PM
34	Trails	11/1/2019 5:56 PM
35	Ice rink	11/1/2019 1:17 PM
36	There are several great open spaces around Allendale that Ottawa County owns. Allendale should focus more on recreation beyond that.	11/1/2019 12:04 PM
37	Trails connecting other trails in the area	11/1/2019 10:00 AM
38	Revamping baseball fields to a more user friendly and modern setup.	11/1/2019 2:59 AM
39	Batting cages - 68th ave park	10/31/2019 11:29 PM
40	More concerts and performances in the park.	10/31/2019 11:25 PM
41	Disc golf, around the park	10/31/2019 11:15 PM
42	I would support a community pool and fitness building.	10/31/2019 10:45 PM
43	Trails that connect to the Ottawa County trails by the river	10/31/2019 10:33 PM
44	Enclosed gathering spaces	10/31/2019 10:20 PM
45	Need a better splash pad and easier way to rent pavilions. Maybe video screens with schedule on it	10/31/2019 9:01 PM

Q20 When considering priorities for the next five years for Allendale Charter Township Parks & Recreation, how important to are the each of the following?

Answered: 89 Skipped: 0



Allendale Charter Township Parks and Recreation



■ Extremely Important
 ■ Important
 ■ Neutral
 ■ Not Important
 ■ N/A

	EXTREMELY IMPORTANT	IMPORTANT	NEUTRAL	NOT IMPORTANT	N/A	TOTAL	WEIGHTED AVERAGE
Provide non-motorized trails to connect all neighborhoods with parks, schools and the region trail system.	38.20% 34	42.70% 38	16.85% 15	2.25% 2	0.00% 0	89	3.17
Increase Opportunities to access rivers/waterways	20.45% 18	46.59% 41	22.73% 20	7.95% 7	2.27% 2	88	2.81
Land Purchase for future park development	23.86% 21	45.45% 40	27.27% 24	3.41% 3	0.00% 0	88	2.90
Township owned Aquatic and Fitness Center	44.32% 39	25.00% 22	15.91% 14	13.64% 12	1.14% 1	88	3.01
Provide more passive recreation opportunities (picnicking, bird watching, nature trails)	13.64% 12	42.05% 37	34.09% 30	10.23% 9	0.00% 0	88	2.59

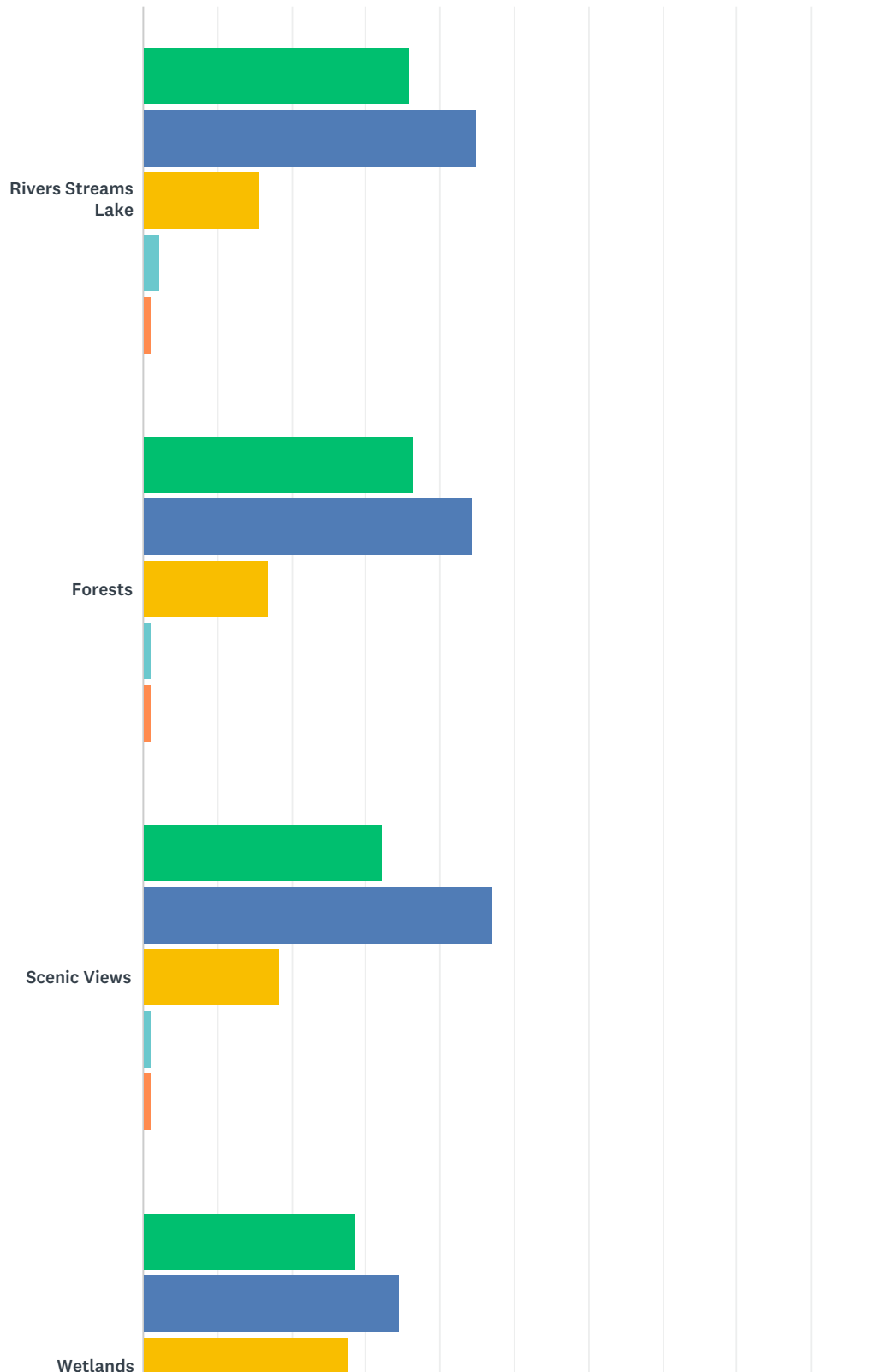
Allendale Charter Township Parks and Recreation

Provide more active recreation or sports (athletic fields, basketball, tennis, pickleball)	13.48%	48.31%	31.46%	5.62%	1.12%		
	12	43	28	5	1	89	2.70

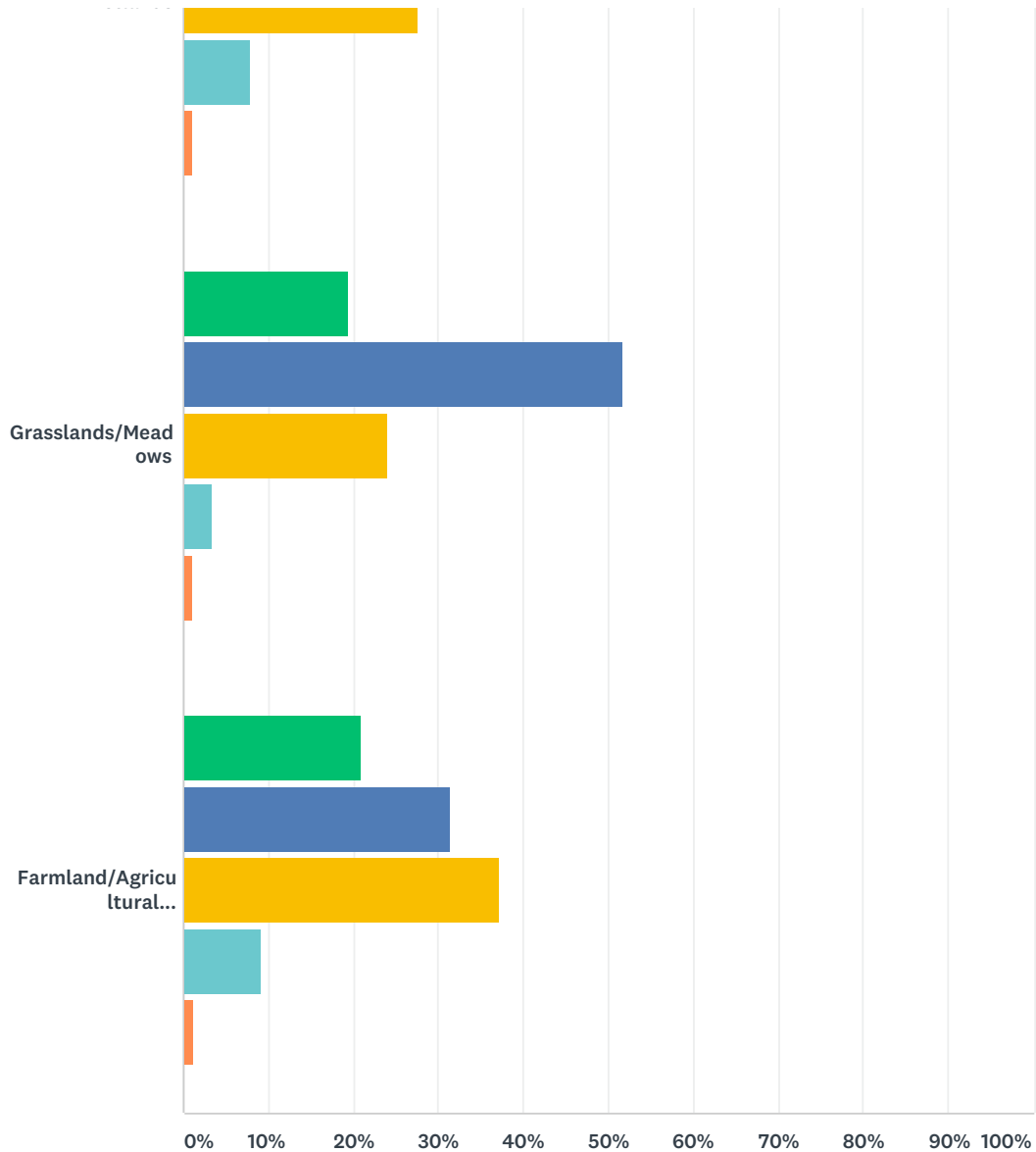
#	COMMENT	DATE
1	Again to much baseball. They only get used April and May.	11/26/2019 2:07 PM
2	Skate park: MOST IMPORTANT	11/2/2019 12:10 AM

Q21 How important to you is preservation and access to the following natural and cultural resources within Allendale Charter Township owned parks?

Answered: 89 Skipped: 0



Allendale Charter Township Parks and Recreation



■ Extremely Important
 ■ Important
 ■ Neutral
 ■ Not Important
 ■ N/A

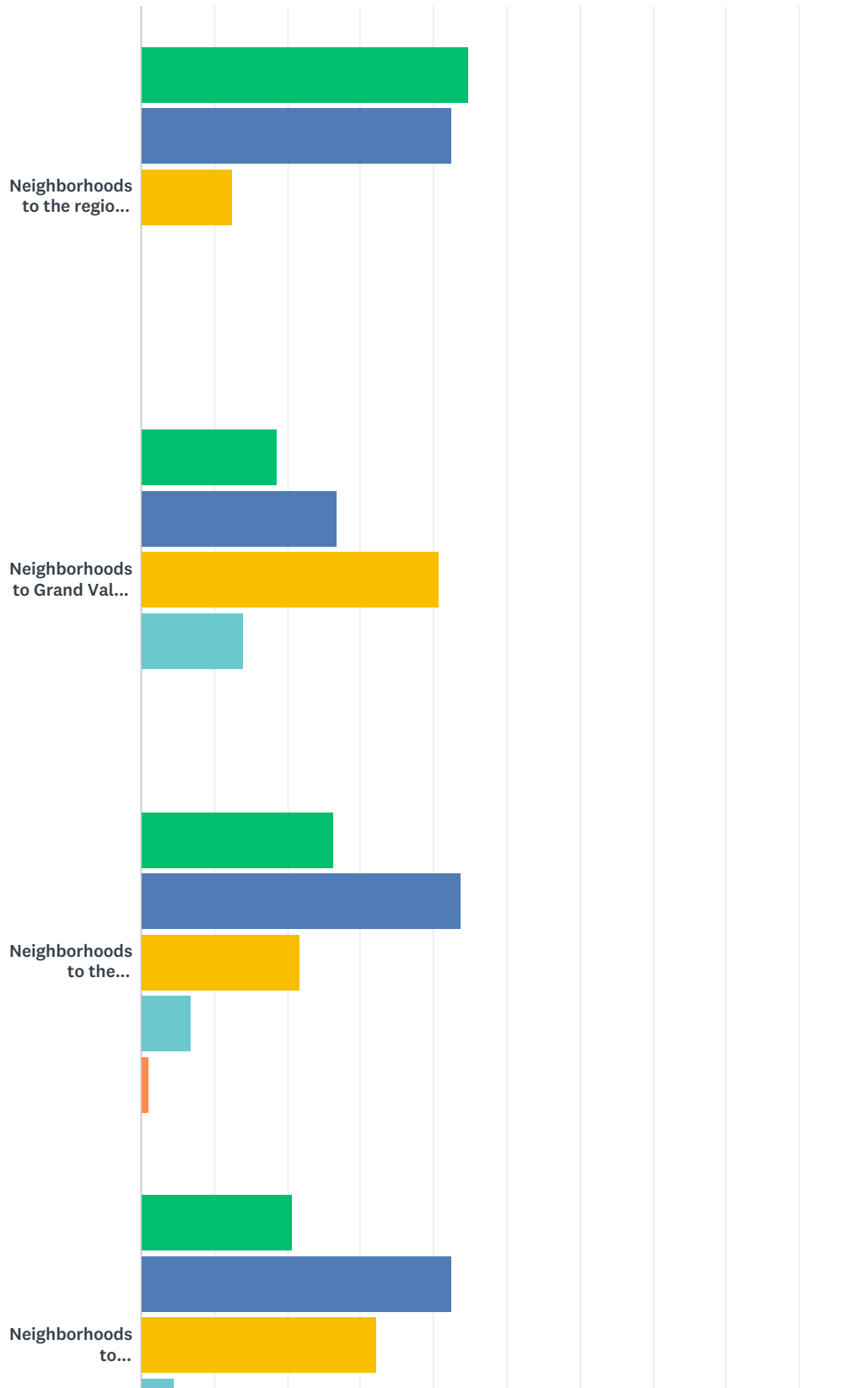
	EXTREMELY IMPORTANT	IMPORTANT	NEUTRAL	NOT IMPORTANT	N/A	TOTAL	WEIGHTED AVERAGE
Rivers Streams Lake	35.96% 32	44.94% 40	15.73% 14	2.25% 2	1.12% 1	89	3.16
Forests	36.36% 32	44.32% 39	17.05% 15	1.14% 1	1.14% 1	88	3.17
Scenic Views	32.18% 28	47.13% 41	18.39% 16	1.15% 1	1.15% 1	87	3.12
Wetlands	28.74% 25	34.48% 30	27.59% 24	8.05% 7	1.15% 1	87	2.85
Grasslands/Meadows	19.54% 17	51.72% 45	24.14% 21	3.45% 3	1.15% 1	87	2.88
Farmland/Agricultural Activities	20.93% 18	31.40% 27	37.21% 32	9.30% 8	1.16% 1	86	2.65

Allendale Charter Township Parks and Recreation

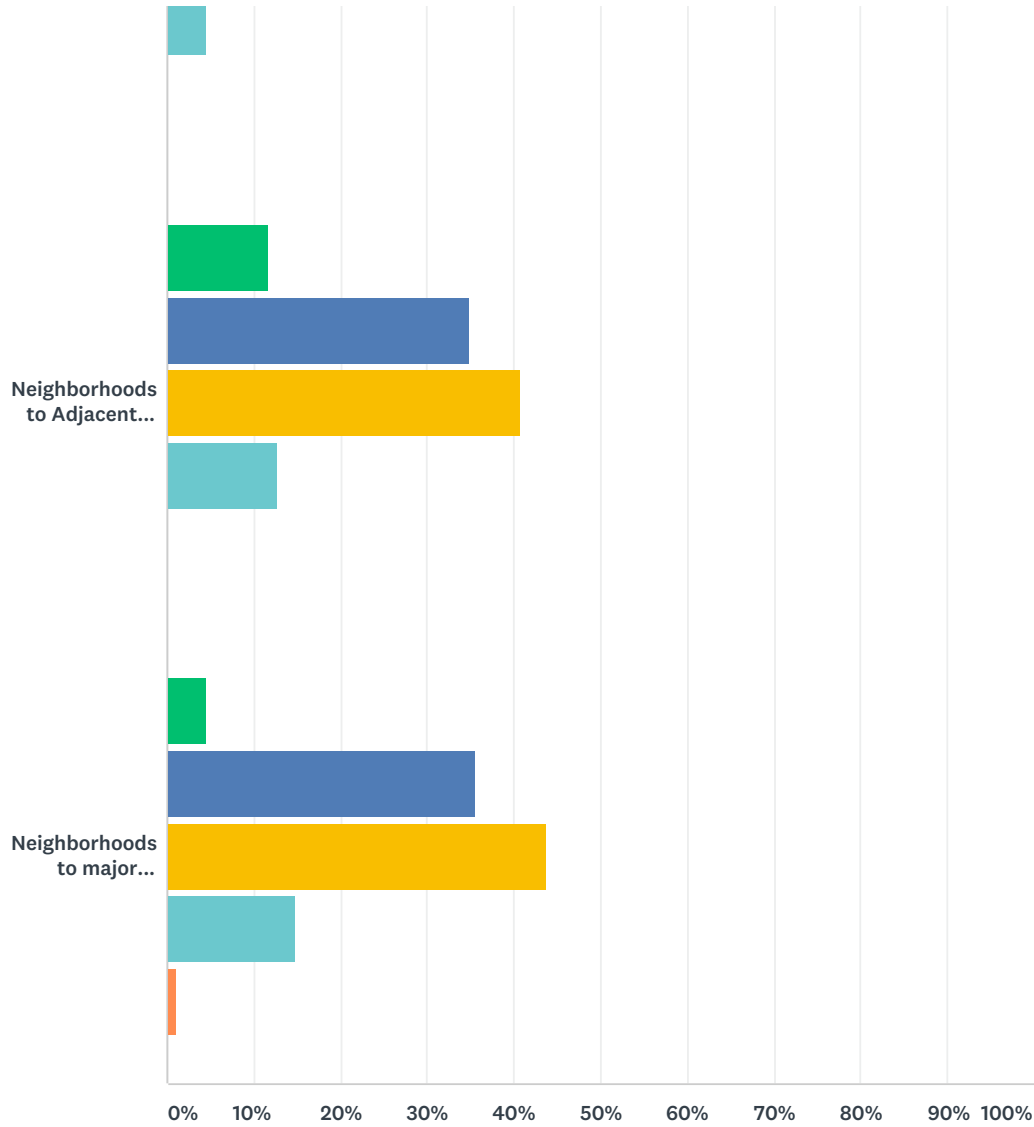
#	COMMENT	DATE
1	Love the wetland areas but do not ever visit them because of mosquitos	11/26/2019 9:09 PM
2	Most of these are already being done by Ottawa County Parks and Recreation. Working with them on this seems the most beneficial for all parties.	11/1/2019 12:04 PM

Q22 As the system of pedestrian pathways and sidewalks are developed, how important to are the following connections?

Answered: 87 Skipped: 2



Allendale Charter Township Parks and Recreation



■ Extremely Important
 ■ Important
 ■ Neutral
 ■ Not Important
 ■ N/A

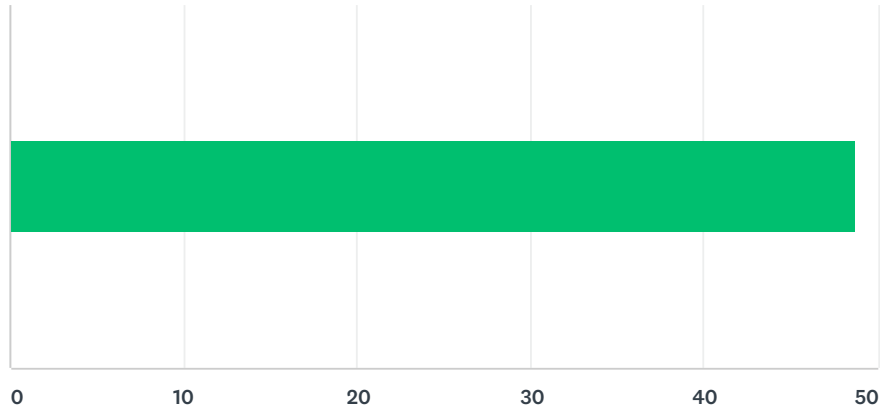
	EXTREMELY IMPORTANT	IMPORTANT	NEUTRAL	NOT IMPORTANT	N/A	TOTAL	WEIGHTED AVERAGE
Neighborhoods to the regional trail system	44.83% 39	42.53% 37	12.64% 11	0.00% 0	0.00% 0	87	3.32
Neighborhoods to Grand Valley State University	18.60% 16	26.74% 23	40.70% 35	13.95% 12	0.00% 0	86	2.50
Neighborhoods to the downtown, city center, commercial retail destinations	26.44% 23	43.68% 38	21.84% 19	6.90% 6	1.15% 1	87	2.91
Neighborhoods to Neighborhoods	20.69% 18	42.53% 37	32.18% 28	4.60% 4	0.00% 0	87	2.79
Neighborhoods to Adjacent Communities	11.63% 10	34.88% 30	40.70% 35	12.79% 11	0.00% 0	86	2.45
Neighborhoods to major employers	4.60% 4	35.63% 31	43.68% 38	14.94% 13	1.15% 1	87	2.30

Allendale Charter Township Parks and Recreation

#	COMMENT	DATE
1	A trail network plan should consider/include all of these connections.	11/26/2019 8:55 PM
2	Neighborhoods to the school complexes are extremely important. Little Bass Court to AMS and AHS	11/1/2019 7:01 PM

Q23 How well do you think Allendale Charter Township communicates to you about parks and recreation facilities and opportunities?

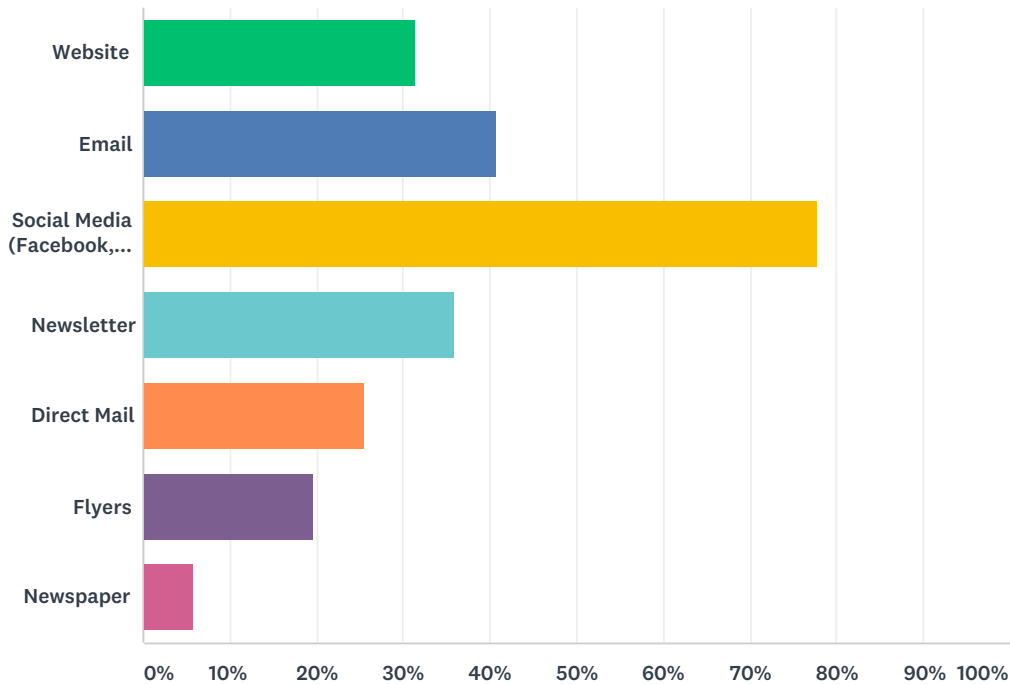
Answered: 87 Skipped: 2



ANSWER CHOICES	AVERAGE NUMBER	TOTAL NUMBER	RESPONSES
	49	4,238	87
Total Respondents: 87			

Q24 Would/How do you prefer to be contacted about activities and services offered by the Parks and Recreation department? Check those that you use (provide email if you want to receive updates).

Answered: 86 Skipped: 3



ANSWER CHOICES	RESPONSES	
Website	31.40%	27
Email	40.70%	35
Social Media (Facebook, Twitter, Instagram etc)	77.91%	67
Newsletter	36.05%	31
Direct Mail	25.58%	22
Flyers	19.77%	17
Newspaper	5.81%	5
Total Respondents: 86		

Q25 If you have anything you'd like to add that we haven't touched on, please include your thoughts and ideas below.

Answered: 19 Skipped: 70

#	RESPONSES	DATE
1	Work with the county... they have a park tax.	11/27/2019 2:05 AM
2	Allendale needs more options indoor and outdoor for families with young kids who don't hVe time to drive to another town between naps just for an activity	11/27/2019 12:39 AM
3	I cannot stress enough how much a recreational and aquatic center facility as well as a children's area in the library.	11/26/2019 9:20 PM
4	Thank you for focusing on this important topic!	11/26/2019 8:55 PM
5	Clean up the stream south of the park. The trail is nice but there is so much trash, tires, etc dumped in the stream.	11/19/2019 2:18 AM
6	Overhead crosswalk over M-45	11/9/2019 3:38 AM
7	With the projected growth of the township, it is definitely going to be important to have one or two more actual parks. The central location and large size of the community park is nice, but too many people have to drive to get there.	11/7/2019 9:16 PM
8	Unless I couldn't find it, please place renovation plan for community park on twp website.	11/7/2019 8:40 PM
9	It would be nice to have something more attractive to teens	11/5/2019 12:43 AM
10	I would love to have the ability to access trails that can lead to great facilities and dog parks.	11/4/2019 12:09 AM
11	Allendale needs a new park...something without baseball fields. Walking/hiking/biking trails, dog park, etc.Allendale also needs a community swimming pool/rec center	11/2/2019 2:36 AM
12	Consider an pedestrian bridge over LMD as expansions continue in our community.	11/1/2019 7:01 PM
13	Would be great to have access to more sidewalks and paved roads on Pierce. This would also help with access to any of the areas of future parks/trails and make it a safe area for riding bikes, walking, rollerblading, etc. Would be nice to have a path for bikes and rollerblading that is safer than LMD.	11/1/2019 6:05 PM
14	Sidewalks down 64th from high school to fillmore	11/1/2019 5:56 PM
15	Music in the park is an important activity to our family. It would be nice to see it expanded like Georgetown with more food truck options, businesses doing activities, etc.	11/1/2019 5:34 PM
16	There are a lot of great partnership opportunities. An aquatic and fitness center would be great, but is there an opportunity to work with GVSU on it. The same can we said for trail and park development and partnering with Ottawa County Parks and Recreation.	11/1/2019 12:04 PM
17	Add a large cement boat launch to the grand river	11/1/2019 10:00 AM
18	Having a Community building is important to keep the residents connected. I would support a new building separate from the township offices for recreational activities as well as community classes and such. Something along the same lines as of the Zeeland community ed building.	10/31/2019 10:45 PM
19	Allendale needs more technology and places where modern families can grow	10/31/2019 9:01 PM

Allendale Community Parks Open House

Provide your input regarding:

- future parks
- future park improvements
- community trails, sidewalks
- any recreation topics

Share your feedback regarding the proposed Parks Master Plan, future park improvements and additional park locations

When: Thursday February 27, 2020 7:00 - 8:30 pm

Where: Allendale Township Hall: 6676 Lk Michigan Dr.



Allendale Community Parks Open House

Provide your input regarding:

- future parks
- future park improvements
- community trails, sidewalks
- any recreation topics

Share your feedback regarding the proposed Parks Master Plan, future park improvements and additional park locations

When: Thursday February 27, 2020 7:00 - 8:30 pm

Where: Allendale Township Hall: 6676 Lk Michigan Dr.



ANNOUNCEMENTS

[Draft Parks and Rec Plan](#)

[Parks and Rec Open House](#)

[Sports Park Sponsorship Info](#)

[REAL ID Notice](#)

[2020Census Information](#)

[Veterans Garden of Honor](#)

PUBLIC NOTICES

[Notice of Intent and Referendum](#)

[2020-2 Ord First Reading-Kennels](#)

[2020-1 Ord final approval](#)

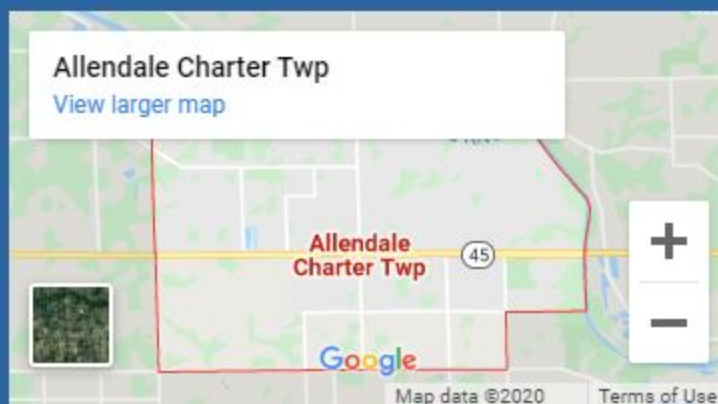
[Parks and Rec Plan Review](#)

CALENDAR

[Mar 02 2020
Planning Commission Meeting](#)

[Mar 05 2020
Parks and Rec Meeting](#)

[Mar 09 2020
2020 Board of Review](#)



ALLENDALE CHARTER TOWNSHIP

6676 Lake Michigan Drive
PO Box 539
Allendale, MI 49401

CONTACT US

Phone: 616-895-6295
Fax: 616-895-6330
clerk@allendale-twp.org

QUICK LINKS

[About](#)
[Departments](#)
[Staff Directory](#)

Appendix D: Land Acquisition Guidelines

Guidelines for Purchasing Additional Parks and Recreation Property in the Township

Property must:

- Be open and accessible to the whole community, not just serve the adjacent residents
- Be accessible from public roads by vehicle, with opportunity for the appropriate number of parking spaces for park users from the community.

Other considerations

- Does the property have unique natural features?
- Does the property have historical value?
- Does the property have the potential to be developed into a community park?
- Does the property have the potential for active and/or passive recreational facilities?
- Is there accessibility around the wetland areas on the property?
- Is there adequate area for vehicular accessibility and parking on the property?
- Could the property be developed with barrier free access?
- Does the property have walk-able access to the public?
- Could this property interconnect with and/or is it adjacent to other parks or recreational pathways?
- If there are already facilities provided on the property, are the facilities in good condition or in need of repair?

Guidelines for Accepting Donated Property for Parks and Recreation Use

Property must:

- Be open and accessible to the whole community, not just serve the adjacent residents
- Be accessible from public roads by vehicle, with opportunity for the appropriate number of parking spaces for park users from the community.
- Have the amenities already constructed by the developer...negotiable on a case by case basis.

Other considerations

- Does the property have unique natural features?
- Does the property have historical value?
- Does the property have the potential to be developed into a community park?

- Does the property have the potential for active and/or passive recreational facilities?
- Is there accessibility around the wetland areas on the property?
- Is there adequate area for vehicular accessibility and parking on the property?
- Could the property be developed with barrier free access?
- Does the property have walk-able access to the public?
- Could this property interconnect with and/or is it adjacent to other parks or recreational pathways?
- What is the condition of the facilities already provided on the property?

Guidelines for Accepting Donated Easements or Purchasing Easements for Connecting Trails for Parks and Recreation Use

Pathways must:

- Be open and accessible to the whole community, not just serve the adjacent residents
- Be accessible from public roads

Other considerations

- Could the pathway be developed with barrier free access?
- Could this pathway interconnect to other parks or recreational pathways?
- Would the pathway comply with the Non-Motorized Pathways Plan?